

TYPE

# NOTICE OF INTENTION TO DRILL

C-1

TO BE FILED WITH THE STATE CORPORATION COMMISSION  
PRIOR TO COMMENCEMENT OF WELL

API Number 15-121-20,275  
(For office use only) 00-00

1. Operator Reese Enterprises, Inc.

Starting Date April 26, 1975

Address Box 96 Wellsville, Kansas 66092

County Miami

2. Contractor H. L. Brady

Sec 10 Twp 17 S Rge 22 E

Address Paola, Kansas

Spot Location SE NE SE

3. Type of Equipment: Rotary X Cable Tool \_\_\_\_\_

Nearest Lease Line 175 ft.

4. Well to be Drilled for: Oil X Gas \_\_\_\_\_

Lease Name Black

Disposal \_\_\_\_\_ Input \_\_\_\_\_ Other \_\_\_\_\_

5. Depth of Deepest Fresh Water within 1 mile None ft.

6. Depth of Municipal Water Well within 3 miles None ft.

7. Depth to Protect all Fresh Water None ft.

8. Amount of Surface Casing to be set 40 ft.

9. Alternate No. 1 \_\_\_\_\_ No. 2 X

Est. Total Depth 700 ft.

REMARKS:

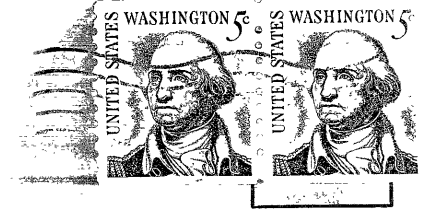
OPERATOR STATES THAT HE WILL COMPLY WITH K. S. A. 55-128

Signature of Operator

*Jack W. Sanders*

*[Handwritten Signature]*





**State Corporation Commission of Kansas**

**Conservation Division**

**P. O. Box 17027**

**Wichita, Kansas 67217**

RECEIVED  
STATE CORPORATION COMMISSION  
04-25-75  
APR 25 1975

CONSERVATION DIVISION  
Wichita, Kansas

(IF PREFERRED, MAIL IN ENVELOPE)