

TYPE OR PRINT

NOTICE OF INTENTION TO DRILL

RULE 82-2-311

15-059-19380-00-00

TO BE FILED WITH THE STATE CORPORATION COMMISSION PRIOR TO COMMENCEMENT OF WELL

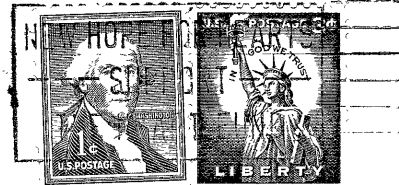
1. Operator S & S OIL Co Address Box 95 NEASHO OIL Co
2. Lease name COFFMAN Well No. 1 County ~~DOUGLASS~~ FRANKLIN
3. Well Location NE 1/4 SE 1/4 Sec. 25 Township 15 S Range 20 E
4. Well to be drilled 495 ft. from nearest lease line.
5. Drilling Contractor OTTAWA DRILLING Co Address OTTAWA, KANSAS
6. Type of equipment: Rotary Cable Tool Approx. date operation to begin 3/12 1960
7. Well to be drilled for Oil Gas Disposal Input Estimated Total Depth of Well 800 ft. OK
8. Depth of deepest fresh water well within one mile of location 25 ft. If none exists, write NONE
9. Ground elevation at location is approx. 50 ft. higher or — ft. lower than ground elevation at water well.
10. Depth of the deepest municipal water well within three miles of location None ft. If none exists, write NONE
11. Operator states that he will set surface pipe at least 25 ft. below all Tertiary or unconsolidated deposits and, taking into consideration differences in ground elevations, that the minimum depth necessary, to the best of his knowledge and belief, to protect all fresh water zones is 75 ft. and operator agrees to set surface pipe at this location to a depth of not less than 800 ft. Alternate 1 Alternate 2

REMARKS:

Signature of Operator

Floyd J. Sorbada





State Corporation Commission of Kansas
Conservation Division
500 Insurance Building
212 North Market
Wichita 2, Kansas

RECEIVED
STATE CORPORATION COMMISSION
MAR 1 1960
CONSERVATION DIVISION
Wichita, Kansas

3-1-60

(IF PREFERRED, MAIL IN ENVELOPE)