

TYPE**NOTICE OF INTENTION TO DRILL**C-1  
MI-1331

TO BE FILED WITH THE STATE CORPORATION COMMISSION  
PRIOR TO COMMENCEMENT OF WELL

API Number 15-059-20,736  
(For office use only) 00-00

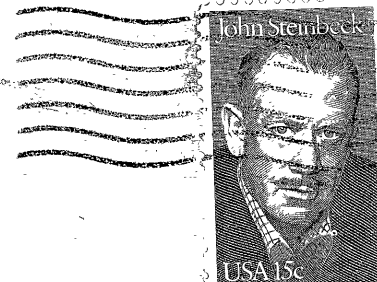
1. Operator TANI FARMS  
BY BARNEY SHIOTANI  
2949 CENTURY PARK, EAST, SUITE 2750  
Address LOS ANGELES, CALIF. 90067
2. Contractor FINCH DRILLING CO.  
Address R. R. 2 OTTAWA, KANSAS 66067
3. Type of Equipment: Rotary X Cable Tool \_\_\_\_\_
4. Well to be Drilled for: Oil X Gas \_\_\_\_\_  
Disposal \_\_\_\_\_ Input \_\_\_\_\_ Other \_\_\_\_\_
5. Depth of Deepest Fresh Water within 1 mile 60 ft.
6. Depth of Municipal Water Well within 3 miles NONE ft.
7. Depth to Protect all Fresh Water 200 ft.
8. Amount of Surface Casing to be set 85 21 ft.
9. Alternate No. 1 \_\_\_\_\_ No. 2 X

Starting Date 4-26-79County FRANKLINSec 8 Twp 16 S Rge 20 ESpot Location SE 1/4 800FSL 200FNLNearest Lease Line 200 ft.Lease Name BaldwinWell No. #7Est. Total Depth 800 ft.

REMARKS:

OPERATOR STATES THAT HE WILL COMPLY WITH K. S. A. 55-128

Signature of Operator Greg R. Pflaum For TANI FARMS  
OK



**State Corporation Commission of Kansas**  
**Conservation Division**  
**245 North Water**  
**Wichita, Kansas 67202**

RECEIVED  
STATE CORPORATION COMMISSION

APR 25 1979

CONSERVATION DIVISION  
Wichita, Kansas

4-25-79

(IF PREFERRED, MAIL IN ENVELOPE)