

15-065-00597-00-01

SO# 16329

Log

COMPANY: IMPERIAL OIL OF KANSAS
 INCORPORATED
 WELL: LINDLEY NO. 1
 FIELD: SEMI-WILDCAT
 LOCATION: 24 - 7S - 23W
 COUNTY: GRAHAM
 STATE: KANSAS

Well Location
 COMPANY: IMPERIAL OIL OF KANSAS
 INCORPORATED
 WELL: LINDLEY NO. 1
 FIELD: SEMI-WILDCAT **FABRICIUS 501**
 LOCATION: C - SE - SW
 SEC. 24 - 7S - 23W
 COUNTY: GRAHAM STATE: KANSAS

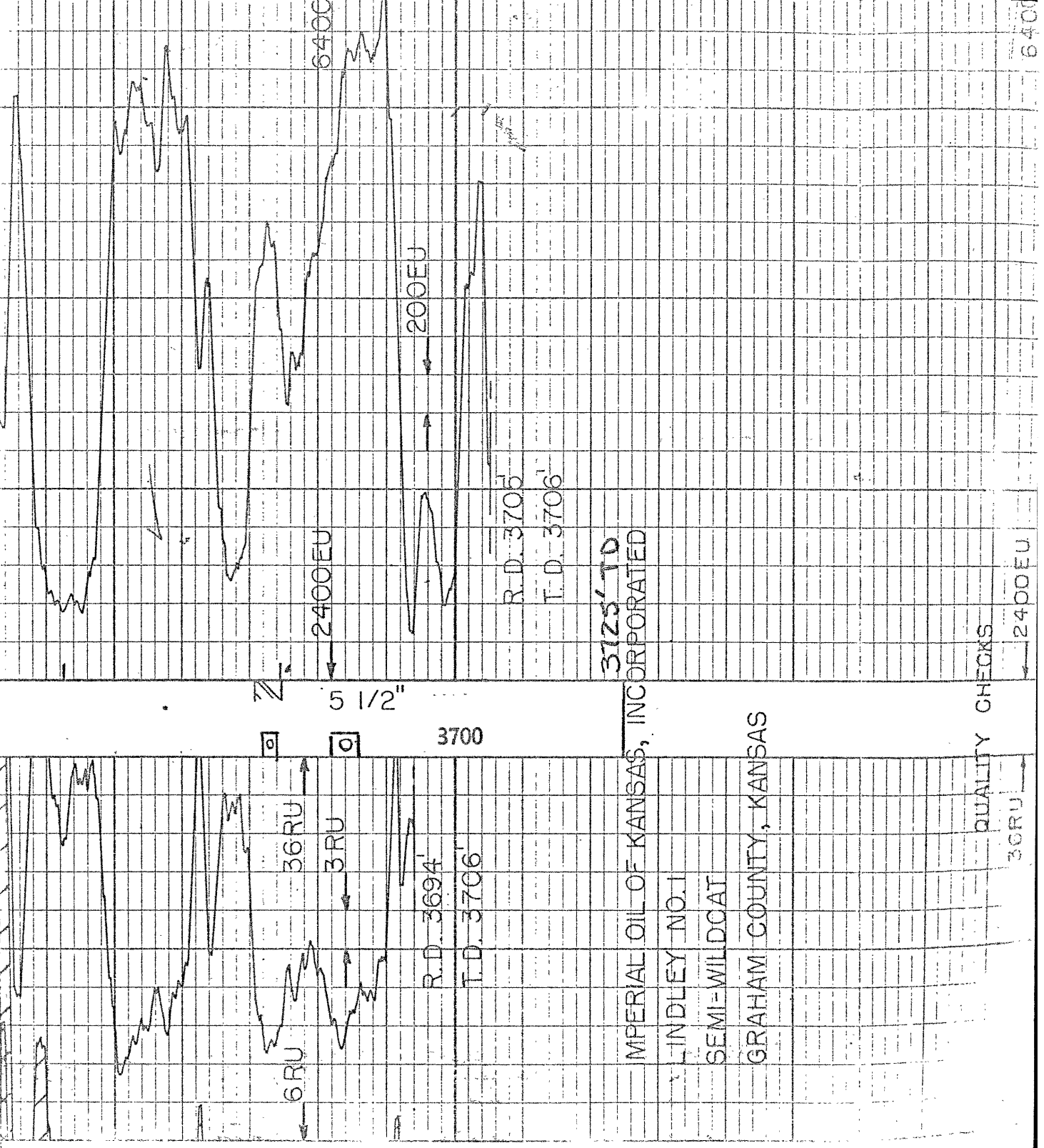
LOG ZERO 5' ABOVE WELDED COLLAR ELEV. 2278
 DRG. ZERO ROTARY KELLY BUSHING ELEV. 2278
 PERM. DATUM: WELDED COLLAR ELEV. 2273

TYPE OF LOG	LOG	GAMMA-RAY	N/Gamma
RUN NO.	1 NW	1 NW	1 NW
DATE	7-23-58	7-23-58	7-23-58
TOTAL DEPTH (DRILLER) W.L.	3725	3725	3725
EFFECTIVE DEPTH (DRILLER)	3705	3705	3705
TOP OF LOGGED INTERVAL	1900	1900	1900
BOTTOM OF LOGGED INTERVAL	3694	3705	3705
TYPE OF FLUID IN HOLE	DRY	DRY	DRY
FLUID LEVEL			
MAXIMUM RECORDED TEMP.			
SOURCE STRENGTH & TYPE		S10A3	13.5
SOURCE SPACING - IN.		Scint.	Scint.
DETECTOR CLASS		DLG1	DLN1
DETECTOR TYPE		4	4
LENGTH OF MEAS. DEVICE - IN.		3 5/8	3 5/8
O.D. OF INSTRUMENT - IN.		2.5	2.0
TIME CONSTANT - SECONDS		25	25
LOGGING SPEED FT./MIN.		RECORDED	RECORDED
STATISTICAL VARIATION - IN.		C-933	D-368
SENSITIVITY REFERENCE		FARR	FARR
RECORDED BY		BOONE	BOONE
WITNESSED BY			

RECEIVED
 STATE CORPORATION COMMISSION
 JUN 11 1974
 CONSERVATION DIVISION
 Wichita, Kansas

WELL RECORD

RUN	BIT SIZE	CASING	WT.-LB.	FROM WELL RECORD	FROM LOG
1	12 1/4	8 5/8	24	SURFACE TO 229	TO
1	7 7/8	5 1/2	14	SURFACE TO 3725	TO
				TO	TO
				TO	TO
				TO	TO



QUALITY CHECKS
 36RU

6400