

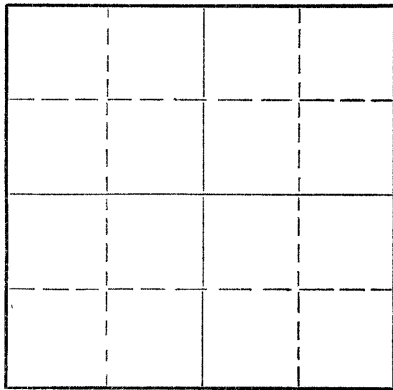
15-163-0055-00-00  
00555-00-00

STATE OF KANSAS  
STATE CORPORATION COMMISSION

Give All Information Completely  
Make Required Affidavit  
Mail or Deliver Report to:  
Conservation Division  
State Corporation Commission  
800 Bitting Building  
Wichita, Kansas

WELL PLUGGING RECORD

NORTH



Locate well correctly on above Section Plat

Rooks \_\_\_\_\_ County. Sec. 17 Twp. 8S Rge. \_\_\_\_\_ (E) 17 (W)  
Location as "NE/CNW%SW%" or footage from lines NW NW NW  
Lease Owner Jones, Shelburne & Farmer, Inc.  
Lease Name Schindler Well No. 1  
Office Address Russell, Kansas  
Character of Well (completed as Oil, Gas or Dry Hole) Dry  
Date well completed 8-19 19 53  
Application for plugging filed 8-19 19 53  
Application for plugging approved 8-19 19 53  
Plugging commenced 8-19 19 53  
Plugging completed 8-19 19 53  
Reason for abandonment of well or producing formation Dry

If a producing well is abandoned, date of last production \_\_\_\_\_ 19\_\_\_\_  
Was permission obtained from the Conservation Division or its agents before plugging was commenced? yes

Name of Conservation Agent who supervised plugging of this well Elden Petty  
Producing formation \_\_\_\_\_ Depth to top \_\_\_\_\_ Bottom \_\_\_\_\_ Total Depth of Well 3355 Feet  
Show depth and thickness of all water, oil and gas formations.

OIL, GAS OR WATER RECORDS

CASING RECORD

FORMATION	CONTENT	FROM	TO	SIZE	PUT IN	PULLED OUT
				8 5/8	160'	None

Describe in detail the manner in which the well was plugged, indicating where the mud fluid was placed and the method or methods used in introducing it into the hole. If cement or other plugs were used, state the character of same and depth placed, from \_\_\_\_\_ feet to \_\_\_\_\_ feet for each plug set.

1. Hole filled with heavymud to 155'
2. Set Halliburton plug at 155'
3. Dumped 15' gravel rock on top of plug
4. Mixed 20 sacks cement and dumped on top of rock
5. Filled hole to 55'
6. Set second plug at 55'
7. Dumped 10' rock on top of plug
8. Dumped 1/2 sack hulls on top of rock
9. Mixed 10 sacks cement and capped hole with same

*MUG 22, 1953*

(If additional description is necessary, use BACK of this sheet)

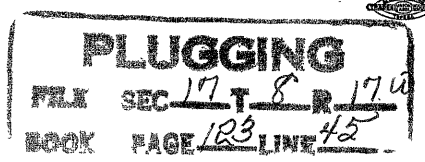
Name of Plugging Contractor D & M Drilling Company  
Address Great Bend, Kansas

STATE OF Kansas, COUNTY OF Russell, ss.  
John O. Farmer (employee of owner) or (owner or operator) of the above-described well, being first duly sworn on oath, says: That I have knowledge of the facts, statements, and matters herein contained and the log of the above-described well as filed and that the same are true and correct. So help me God.

(Signature) John O. Farmer  
Russell, Kansas (Address)

SUBSCRIBED AND SWORN TO before me this 21st day of August, 1953

My commission expires April 23, 1956  
Bonnie Berryhill Notary Public.



OPERATOR Jones, Shelburne &amp; Farmer, Inc.

ADDRESS Russell, Kansas

15-163-0055-00-00

00555 FORMATION RECORD

Give detailed description and thickness of all formations drilled through, contents of sand, whether dry, water, oil or gas.

Formation	Top	Bottom	Formation	Top	Bottom
Shale	0	160			
Shale & shells	160	530			
Sand	530	1050			
Shale, redbed sand	1050	1270			
Shale	1270	1290			
Anhydrite	1290	1322			
Red bed & shale	1322	1682			
Shale	1682	1847			
Shale & lime	1847	2066			
Lime	2066	2155			
Shale & lime	2155	2323			
Lime & shale	2323	2423			
Shale & lime	2423	2850			
Lime & shale	2850	2950			
Lime	2950	3037			
Lime & shale	3037	3133			
Lime	3133	3185			
Lime & shale	3185	3263			
Lime	3263	3318			
Lime & shale	3318	3331			
Arbuckle 3331	3331	3348			
Lime	3348	3355			

TOPS:

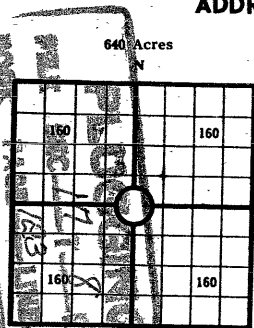
Elevation 1882 R. B.  
 Heebner 3018  
 Toronto 3043  
 Lansing 3060  
 Arbuckle 3332  
 T. D. 3355  
 D & A

I, the undersigned, being first duly sworn upon oath, state that this well record is true, correct and complete according to the records of this office and to the best of my knowledge and belief.

*John Farmer* Vice-President  
 Name and title of representative of company

Subscribed and sworn to before me this 21st day of August 1953  
 My Commission expires April 23, 1956  
*Bonnie Berryhill*  
 Notary Public.

WELL NO. 1 COUNTY Rooks SEC. 17, TWP. 8, RGE. 17



Locate well correctly

COUNTY Rooks, SEC. 17, TWP. 8, RGE. 17  
 COMPANY OPERATING Jones, Shelburne & Farmer, Inc.  
 OFFICE ADDRESS Russell, Kansas  
 FARM NAME Schindler WELL NO. 1  
 DRILLING STARTED 8-10-53, DRILLING FINISHED 8-19-53  
 DATE OF FIRST PRODUCTION \_\_\_\_\_ COMPLETED \_\_\_\_\_  
 WELL LOCATED NW 1/4 NW 1/4 NW 1/4, North of South  
 Line and \_\_\_\_\_ ft. East of West Line of Quarter Section  
 Elevation (Relative to sea level) DERRICK FLOOR 1880 GROUND \_\_\_\_\_  
 CHARACTER OF WELL (Oil, gas or dryhole) dry

## OIL OR GAS SANDS OR ZONES

Name	From	To	Name	From	To
1			4		
2			5		
3			6		

## Perforating Record If Any

Formation	From	To	No. of Shots	Shot Record		
				Formation	From	To

## CASING RECORD

Amount Set						Amount Pulled		Packer Record			
Size	Wt.	Thds.	Make	Ft.	In.	Ft.	In.	Size	Length	Depth Set	Make
8 5/8				160							

Liner Record: Amount \_\_\_\_\_ Kind \_\_\_\_\_ Top \_\_\_\_\_ Bottom \_\_\_\_\_

## CEMENTING AND MUDDING

Size	Amount Set		Sacks Cement	Chemical		Method of Cementing	Amount	Mudding Method	Results (See Note)
	Ft.	In.		Gal.	Make				
8 5/8	160		125						

Note: What method was used to protect sands if outer strings were pulled? \_\_\_\_\_

NOTE: Were bottom hole plugs used? \_\_\_\_\_ If so, state kind, depth set and results obtained \_\_\_\_\_

## TOOLS USED

Rotary Tools were used from \_\_\_\_\_ feet to \_\_\_\_\_ Cable tools were used from \_\_\_\_\_ feet to \_\_\_\_\_  
 \_\_\_\_\_ feet, and from \_\_\_\_\_ feet to \_\_\_\_\_ feet, and from \_\_\_\_\_ feet to \_\_\_\_\_  
 Type Rig \_\_\_\_\_

## INITIAL PRODUCTION TEST

Describe initial test: whether by flow through tubing or casing or by pumping \_\_\_\_\_

Amount of Oil Production \_\_\_\_\_ bbls. Size of choke, if any \_\_\_\_\_ Length of test \_\_\_\_\_ Water  
 Production \_\_\_\_\_ bbls. Gravity of oil \_\_\_\_\_ Type of Pump if pump is used, describe \_\_\_\_\_

FARM NAME Schindler