

KANSAS CORPORATION COMMISSION  
OIL & GAS CONSERVATION DIVISION

MAY 23 2006

Form CP-1  
September 2003

WELL PLUGGING APPLICATION CONSERVATION DIVISION

This Form must be Typed  
Form must be Signed  
All blanks must be Filled

Please TYPE Form and File ONE Copy

WICHITA, KS

API # 15 - 093-20513 - 00 - 00 (Identifier Number of this well). This must be listed for wells drilled since 1967; if no API # was issued,

indicate original spud or completion date 9/1/78

Well Operator: Exxon Mobil Corporation KCC License #: 5208  
(Owner / Company Name) (Operator's)

Address: PO Box 4358 City: Houston,

State: Texas Zip Code: 77210 Contact Phone: ( 281 ) 364 - 5073

Lease: USA -White Well #: 2D Sec. 17 Twp. 26 S. R. 35  East  West

C - NW Spot Location / QQQQ County: Kearney

1346 Feet (in exact footage) From  North /  South (from nearest outside section corner) Line of Section (Not Lease Line)

1417 Feet (in exact footage) From  East /  West (from nearest outside section corner) Line of Section (Not Lease Line)

Check One:  Oil Well  Gas Well  D&A  Cathodic  Water Supply Well  
 SWD Docket # \_\_\_\_\_  ENHR Docket # \_\_\_\_\_  Other: \_\_\_\_\_

Conductor Casing Size: \_\_\_\_\_ Set at: \_\_\_\_\_ Cemented with: \_\_\_\_\_ Sacks

Surface Casing Size: 8 5/8" Set at: 823' Cemented with: 400 Sacks

Production Casing Size: 5 1/2" Set at: 3040' Cemented with: 400 Sacks

List (ALL) Perforations and Bridgeplug Sets: Please see attached wellbore sketch

Elevation: 3014' ( G.L. /  K.B.) T.D.: 3040' PBDT: 3000' Anhydrite Depth: \_\_\_\_\_  
(Stone Corral Formation)

Condition of Well:  Good  Poor  Casing Leak  Junk in Hole

Proposed Method of Plugging (attach a separate page if additional space is needed): Possible collapsed casing / Please see attached proposed procedure / Will be P&A'd in accordance with KCC rules and regulations

Is Well Log attached to this application as required?  Yes  No Is ACO-1 filed?  Yes  No

If not explain why? Can not find in file / Can not locate ACO-1 form

Plugging of this Well will be done in accordance with K.S.A. 55-101 et. seq. and the Rules and Regulations of the State Corporation Commission.

List Name of Company Representative authorized to be in charge of plugging operations: Richard Lewis

Phone: ( 316 ) 544 - 5534

Address: 200 W. 4th Street City / State: Hugoton, KS 67951

Plugging Contractor: Sargent & Horton KCC License #: 31151  
(Company Name) (Contractor's)

Address: Rt. 1, Box 49BA, Tyrone, KS 73951 Phone: ( 580 ) 854 - 6515

Proposed Date and Hour of Plugging (if known?): ASAP

Payment of the Plugging Fee (K.A.R. 82-3-118) will be guaranteed by Operator or Agent

Date: 5/18/06 Authorized Operator / Agent: Colleen Rada  
(Signature)

MAY 23 2006

CONSERVATION DIVISION  
WICHITA, KS

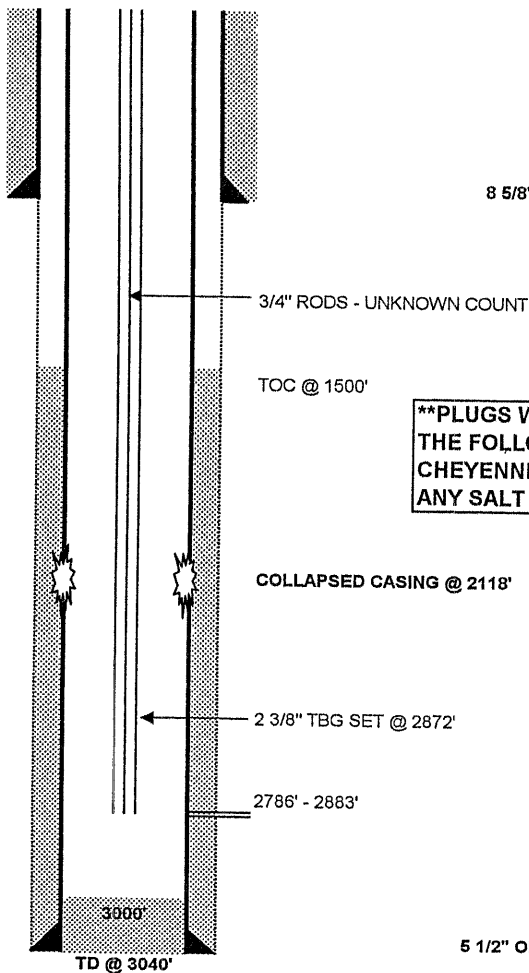
PRELIMINARY B&A SKETCH-PLUGS WILL CHANGE PER THE DIRECTIONS OF THE KCC DISTRICT REPRESENTATIVE

COMPANY: Exxon Mobil Corporation  
WELL NAME: USA White  
WELL #: D2  
API#: 15-093-20513  
COUNTY: Kearney

SURFACE CASING			
OD	WT / FT	GRADE	SET AT
8 5/8"	24	K-55	823'
PRODUCTION CASING			
OD	WT / FT	GRADE	SET AT
5 1/2"	14	K-55	3040'
TUBING			
OD	WT / FT	GRADE	SET AT
2 3/8"	4.7	J-55	2872'

CAPACITIES (BBL/FT)	
2 3/8" TBG	0.00387
5 1/2" CSG	0.0244
2 3/8" x 5 1/2"	0.0189
8 5/8" CSG	0.0636
2 3/8" x 8 5/8"	0.0582

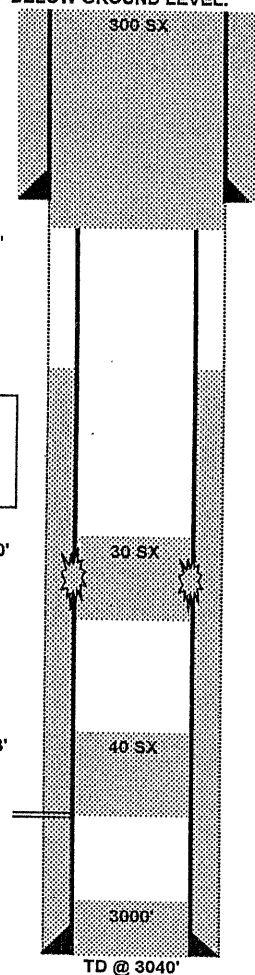
BEFORE



AFTER

CUT & CAP WELL @ 5' BELOW GROUND LEVEL.

PLUG # (2) 3' - 873'



8 5/8" OD SURFACE CSG SET @ 823'

CUT 5 1/2" CSG @ 873'

3/4" RODS - UNKNOWN COUNT

TOC @ 1500'

**\*\*PLUGS WILL NEED TO BE SET ACROSS THE FOLLOWING FORMATIONS: CHEYENNE, DAKOTA, ARBUCKLE, ANY SALT ZONES, ANY FRESH WATER ZONES**

COLLAPSED CASING @ 2118'

PLUG # (2) 2000' - 2200'

2 3/8" TBG SET @ 2872'

PLUG # (1) 2580' - 2883'

2786' - 2883'

5 1/2" OD PRODUCTION CSG SET @ 3040'

TD @ 3040'

TD @ 3040'

MAY 23 2006

CONSERVATION DIVISION  
WICHITA, KS

PROPOSED PLUGGING PROCEDURE FOR EXXON MOBIL CORPORATION

WELL: USA WHITE UNITE # 2D  
FIELD: PANOMA FAS AREA  
COUNTY: KEARNY, KANSAS



**THIS IS A CATEGORY III WORKOVER.**

**NOTE: SUBJECT WELL POTENTIALLY HAS COLLAPSED CASING @ 2118'. IF UNABLE TO RETRIEVE TUBING AND SET BOTTOM PLUG, OBTAIN ALL NECESSARY APPROVALS INCLUDING THE KCC'S APPROVAL TO REVISE PROCEDURE.**

**NOTE: PERFORM ALL WELL WORK OPERATIONS IN ACCORDANCE WITH THE HPO WORKOVER OPERATIONS MANUAL.**

**NOTE: USE CLASS 'H', 16.4 PPG, 1.06 YIELD CEMENT FOR ALL PLUGS.**

**NOTE: PUMP 9.5 PPG MUD LADEN FLUID BETWEEN CEMENT PLUGS.**

**NOTE: NOTIFY KCC DISTRICT OFFICE IN DODGE CITY, KS PRIOR TO COMMENCEMENT OF WORK & WITHIN SUFFICIENT TIME TO WITNESS PLUGGING OPERATIONS.**

**NOTE: ENSURE PLUGGING FORMS HAVE APPROPRIATE INFORMATION NEEDED TO FILE APPROPRIATE PAPERWORK W/ THE KCC TO CONCLUDE PLUGGING OPERATIONS.**

**Check pressures on all casing strings daily and document on morning reports. Discuss safe blow down/well kill procedures with Exxon Mobil Workover Supervisor.**

1. INSPECT JOBSITE FOR POTENTIAL HAZARDS & LOCATION CHARACTERISTICS THAT MAY IMPACT THE PLANNED WELLWORK AND/OR REQUIRE MODIFICATION OF THE PROCEDURE. INITIATE MOC PROCESS IF NEEDED.
2. SET & TEST RIG ANCHORS AS NEEDED.
3. **PLUG WELL AS DIRECTED BY KCC DISTRICT REPRESENTATIVE.** A GENERAL PLAN IS AS FOLLOWS, BUT SHOULD BE REVISED TO ENSURE ALL FORMATIONS (INCLUDING THE CHEYENNE FORMATION, DAKOTA FORMATION, ARBUCKLE FORMATION, ANY SALT FORMATIONS & ANY FRESH & USABLE WATER ZONES) ARE ISOLATED AS PER THE SPECIFICATIONS OF THE KCC.
4. POH W/ TBG & COMPLETION ASSEMBLY.
5. RIH W/ 2 3/8" WORKSTRING OPENENDED TO 2883'. (SEE NOTE ABOVE RE: **COLLAPSED CASING @ 2118'.**)
6. CIRCULATE 9.5 PPG MUD.
7. SET 40 SX CEMENT PLUG FROM 2580' - 2883'.
8. POH W/ WORKSTRING TO 2200'. REVERSE OUT.
9. WOC. LOWER WORKSTRING & TAG TOC TO VERIFY BOTTOM PLUG.
10. POH W/ WORKSTRING TO 2200'.
11. SET 30 SX CEMENT PLUG FROM 2000' - 2200'.
12. POH W/ WORKSTRING.
13. TEST 5 1/2" CSG TO 500 PSI.
14. NIPPLE UP ON 5 1/2" CSG. RU JACKS.
15. SET BOP'S W/ 5 1/2" PIPE RAMS & TEST.
16. RU WL UNIT W/ CLASS II LUBRICATOR & TEST. CUT 5 1/2" CSG @ 873'. RD WL UNIT.

**RECEIVED**  
**KANSAS CORPORATION COMMISSION**

**MAY 23 2006**

**CONSERVATION DIVISION**  
**WICHITA, KS**

17. CIRCULATE & CONDITION MUD.
18. RECOVER 5 1/2" CSG.
19. CHANGE BOP RAMS TO 2 3/8" TBG.
20. RIH W/ 2 3/8" WORKSTRING TO 873'.
21. SET 300 SX CEMENT PLUG FROM 3' - 873'.
22. POH W/ WORKSTRING.
23. REMOVE BOP'S.
24. CUT & CAP WELL 3' BELOW GROUND LEVEL.
25. RD/MO.

10/1/05



CORPORATION COMMISSION

Kathleen Sebelius, Governor    Brian J. Moline, Chair    Robert E. Krehbiel, Commissioner    Michael C. Moffet, Commissioner

**NOTICE OF RECEIPT OF WELL PLUGGING APPLICATION (CP-1)**

EXXONMOBIL Oil Corp  
14950 Heathrow Forrest Parkway  
PO Box 4358  
Houston, TX 77210-4358

May 24, 2006

Re: USA - WHITE UNIT - D #2  
API 15-093-20513-00-00  
NW 17-26S-35W, 1346 FNL 1417 FWL  
KEARNY COUNTY, KANSAS

Dear Operator:

This letter is to notify you that the Conservation Division is in receipt of your plugging proposal, form CP-1, for the above-captioned well.

Your CP-1 has been reviewed by the Conservation Division central office for completeness and to verify license numbers. The plugging proposal will now be forwarded to the district office listed below for review of your proposed method of plugging.

**Please contact the district office for approval of your proposed plugging method at least five (5) days before plugging the well, pursuant to K.A.R. 82-3-113 (b). If a workover pit will be used during the plugging of the well it must be permitted. A CDP-1 form must be filed and approved prior to the use of the pit.**

The Conservation Division's review of form CP-1, either in the central or district office, does not include an inquiry into well ownership or the filing operator's legal right to plug the well.

**This notice in no way constitutes authorization to plug the above-captioned well by persons not having legal rights of ownership or interest in the well. This notice is void after ninety (90) days from the above date.**

District: #1  
210 E Frontview, Suite A  
Dodge City, KS 67801  
(620) 225-8888

Sincerely  


David P. Williams  
Production Supervisor