

15-029-20001-00-00

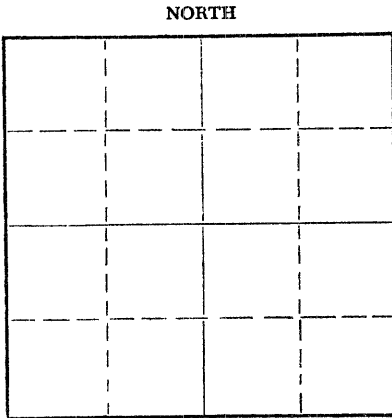
STATE OF KANSAS
STATE CORPORATION COMMISSION

Form CP-4

Give All Information Completely
Make Required Affidavit
Mail or Deliver Report to:
Conservation Division
State Corporation Commission
212 No. Market
Wichita, Kansas

WELL PLUGGING RECORD

Cloud County, Sec. 36 Twp. 8S Rge. 5W (E) (W)
Location as "NE/CNW/SW" or footage from lines NW/4 NW/4
Lease Owner Thompson-Waterman
Lease Name Yenni Well No. 1
Office Address 626 Max, Salina, Kansas - 67401
Character of Well (completed as Oil, Gas or Dry Hole) Dry
Date well completed September 25, 19 67
Application for plugging filed 19
Application for plugging approved 19
Plugging commenced 19
Plugging completed September 25, 19 67
Reason for abandonment of well or producing formation Hole dry



If a producing well is abandoned, date of last production 19
Was permission obtained from the Conservation Division or its agents before plugging was commenced? Yes

Name of Conservation Agent who supervised plugging of this well Gilbert J. Toman
Producing formation Depth to top Bottom Total Depth of Well Feet
Show depth and thickness of all water, oil and gas formations.

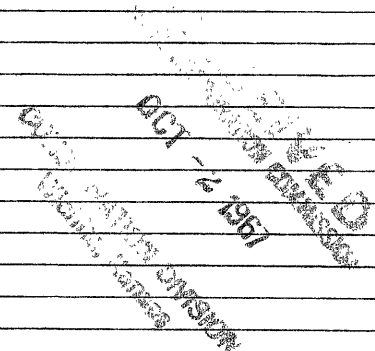
OIL, GAS OR WATER RECORDS

CASING RECORD

| FORMATION | CONTENT | FROM | TO | SIZE | PUT IN | PULLED OUT |
|-----------|---------|------|------|--------|--------|------------|
| Sand | | 0' | 80' | 8 5/8" | 80' | None |
| Shale | | 80' | 202' | 8 5/8" | 122' | None |
| | | | | | | |
| | | | | | | |
| | | | | | | |
| | | | | | | |
| | | | | | | |
| | | | | | | |
| | | | | | | |

Describe in detail the manner in which the well was plugged, indicating where the mud fluid was placed and the method or methods used in introducing it into the hole. If cement or other plugs were used, state the character of same and depth placed, from feet to feet for each plug set.

Set bottom plug at 195 ft. Plugged with 125 sacks cemetn. 2 sacks in rathole. Job completed at 4:00 A.M., September 25, 1967, by Gilbert J. Toman, State Plugger of Holyrood, Kansas.



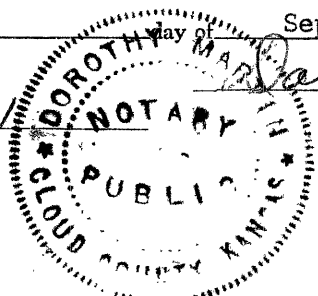
(If additional description is necessary, use BACK of this sheet)
Name of Plugging Contractor BLACKSTONE DRILLING, INC. 10-2-67
Address Box # 455, McPherson, Kansas - 67460

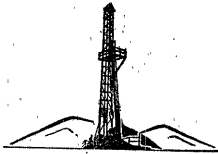
STATE OF KANSAS, COUNTY OF SALINE, ss.
Willis Waterman (employee of owner) (operator) of the above-described well, being first duly sworn on oath, says: That I have knowledge of the facts, statements, and matters herein contained and the log of the above-described well as filed and that the same are true and correct. So help me God.

(Signature) Willis Waterman
626 Max, Salina, Kansas - 67401 (Address)

SUBSCRIBED AND SWORN to before me this September 27, 19 67

My commission expires July 24, 1971 Dorothy Martin Notary Public.





State

Blackstone Drilling, Inc.

Box 455 • 523 West Kansas • Phone CH 1-1250

McPHERSON • KANSAS
67460

September 26, 1967

15-029-20001-00-00

COMPANY: THOMPSON-WATERMAN
 CONTRACTOR: BLACKSTONE DRILLING, INC.
 FARM: YENNI #1
 LOCATION: NW/4 NW/4, Sec. 36-88-5W,
 Cloud County, Kansas
 COMMENCED: September 14, 1967
 COMPLETED: September 25, 1967
 ELEVATION: 1317 K.B.

| | | | |
|------|----|------|-------------------|
| 0 | to | 80 | Sand |
| 80 | to | 202 | Shale |
| 202 | to | 470 | Shale & Shells |
| 470 | to | 645 | Lime & Shale |
| 645 | to | 845 | Lime |
| 845 | to | 1170 | Lime & Shale |
| 1170 | to | 1845 | Shale & Lime |
| 1845 | to | 2005 | Lime & Shale |
| 2005 | to | 2143 | Shale & Lime |
| 2143 | to | 2165 | Brown Lime |
| 2165 | to | 2181 | Shale |
| 2181 | to | 2480 | Lime |
| 2480 | to | 2688 | Lime & Shale |
| 2688 | to | 2887 | Shale & Lime |
| 2887 | to | 3064 | Mississippi Chert |
| 3064 | to | 3125 | Mississippi Lime |
| 3125 | to | 3217 | Kinderhook |
| 3217 | to | 3350 | Hunton |
| 3350 | to | 3416 | Maquoketa |
| 3416 | to | 3487 | Viola |
| 3487 | to | 3580 | Lime |
| 3580 | to | 3612 | Simpson |
| 3612 | to | 3627 | Arbuckle |
| | | 3627 | T.D. |

RECORDED
 INDEXED
 OCT 2 1967
 WICHITA, KANSAS
 102-67

Cut 1 1/4 in. hole to 202 ft. and run 205 ft. of 8 5/8 in. surface pipe, cemented with 200 sks. on bottom at 202 ft. Plug down at 1:45 P.M., September 14, 1967. Cut 7 7/8 in. hole to 3627 ft. Hole dry and abandoned. Set bottom plug at 195 ft. Plugged with 125 sacks cement. 2 sacks in rathole. Job completed at 4:00 A.M., September 25, 1967. State Plugger

TOPS: Heebner - 2075' Brown Lime - 2144' Lansing - 2184' B/K.C. - 2547'
 Burgess Sand - 2870' Mississippi - 2886' Gilmore City - 3066' Hunton - 3216'
 Maquoketa Shale - 3344' Viola - 3416' Simpson - 3580' Arbuckle - 3612'

Measurements taken from K.B.

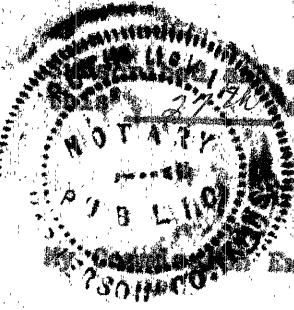
CERTIFICATE

I, H. J. Plouffe, President of Blackstone Drilling, Inc. do hereby certify that the above and foregoing is a true and correct copy of log on your Yenni #1, located on the NW/4 NW/4 of Sec. 36-88-5W, Cloud County, Kansas as reflected by the files of Blackstone Drilling, Inc.

H. J. Plouffe
 H. J. Plouffe, President

Sworn to before me a Notary Public in and for McPherson County, Kansas

Ruth McVay
 Ruth McVay - Notary Public



Expires: Dec. 15, 1969.