

TYPE

NOTICE OF INTENTION TO DRILL

C-1

TO BE FILED WITH THE STATE CORPORATION COMMISSION
PRIOR TO COMMENCEMENT OF WELL

API Number 15-207-21,335
(For office use only) 00-00

1. Operator Newland & Ranes

Starting Date May 15, 1978

Address 510 N. Main Yates Center, KS 66783

County Woodson

2. Contractor O H & S Drilling Co

Sec 23 Twp 23 S Rge 16 E E

Address Route 2 Colony, KS 66015

Spot Location NE/NE/NE

3. Type of Equipment: Rotary X Cable Tool

Nearest Lease Line 220 ft.

4. Well to be Drilled for: Oil X Gas

Lease Name Murray

Disposal Input Other

5. Depth of Deepest Fresh Water within 1 mile 30 ft.

6. Depth of Municipal Water Well within 3 miles 0 ft.

7. Depth to Protect all Fresh Water 150 ft.

8. Amount of Surface Casing to be set 70 ft.

Est. Total Depth 975 ft.

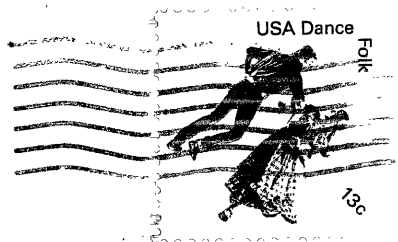
9. Alternate No. 1 No. 2 X

REMARKS: Oil string will be cemented to top

OPERATOR STATES THAT HE WILL COMPLY WITH K. S. A. 55-128

Signature of Operator

Newland & Ranes
OK
JB



**State Corporation Commission of Kansas
Conservation Division**

~~P.O. Box 17027~~

245 N. Water

Wichita, Kansas

~~67202~~

67202

RECEIVED
STATE CORPORATION COMMISSION

MAY 12 1978

CONSERVATION DIVISION
Wichita, Kansas

5-12-78

(IF PREFERRED, MAIL IN ENVELOPE)