

TYPE

NOTICE OF INTENTION TO DRILL

C-1

TO BE FILED WITH THE STATE CORPORATION COMMISSION
PRIOR TO COMMENCEMENT OF WELL

API Number 15-207-26102
(For office use only) 00-00

1. Operator John E. Leis

Address 307 West Kansas Yates Center, Kansas 66783

2. Contractor Norman Michael Drilling Cont.

Address Box 258 Iola, Kansas 66749

3. Type of Equipment: Rotary XX Cable Tool

4. Well to be Drilled for: Oil XX Gas

Disposal Input Other

5. Depth of Deepest Fresh Water within 1 mile 18 ft.

6. Depth of Municipal Water Well within 3 miles None ft.

7. Depth to Protect all Fresh Water 150 ft.

8. Amount of Surface Casing to be set 30 ft.

9. Alternate No. 1 No. 2 XX

Starting Date 2/23/77

County Woodson

Sec 2 Twp 24 S Rge 15E. E. W

Spot Location 1170 S.N.L. 330 E.W.L. N.W. 1/4

Nearest Lease Line 330 ft.

Lease Name Smith

Well No. 1

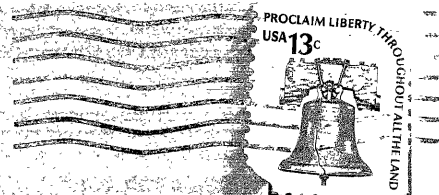
Est. Total Depth 1500 ft.

REMARKS:

OPERATOR STATES THAT HE WILL COMPLY WITH K. S. A. 55-128

Signature of Operator

John E. Leis



State Corporation Commission of Kansas
Conservation Division
P. O. Box 17027
Wichita, Kansas 67217

3-3-77

RECEIVED
STATE CORPORATION COMMISSION

MAR 03 1977

CONSERVATION DIVISION
Wichita, Kansas

(IF PREFERRED, MAIL IN ENVELOPE)