

TYPE OR PRINT

NOTICE OF INTENTION TO DRILL

RULE 82-2-311

15-207-01393-00-00

TO BE FILED WITH THE STATE CORPORATION COMMISSION PRIOR TO COMMENCEMENT OF WELL

1. Operator J.F. Wingrave Address Yates Center, Kansas
2. Lease name Wingrave (J.F.) Well No. 6 County Woods on
3. Well Location NW 1/4 of NE 1/4 Sec. 23 Township 24 Range 16 E
4. Well to be drilled 650 ft. from nearest lease line.
5. Drilling Contractor D.D. Smith Address Yates, Kansas
6. Type of equipment: Rotary ☒ Cable Tool ☐ Approx. date operation to begin April 26 1966
7. Well to be drilled for Oil ☒ Gas ☐ Disposal ☐ Input ☐ Estimated Total Depth of Well 1000 ft.
8. Depth of deepest fresh water well within one mile of location none ft. If none exists, write NONE
9. Ground elevation at location is approx. 2 ft. higher or 2 ft. lower than ground elevation at water well.
10. Depth of the deepest municipal water well within three miles of location NONE ft. If none exists, write NONE
NONE
11. Operator states that he will set surface pipe at least 25 ft. below all Tertiary or unconsolidated deposits and, taking into consideration differences in ground elevations, that the minimum depth necessary, to the best of his knowledge and belief, to protect all fresh water zones is 30 ft. and operator agrees to set surface pipe at this location to a depth of not less than 30 ft. Alternate 1 ☐ Alternate 2 ☒

REMARKS:

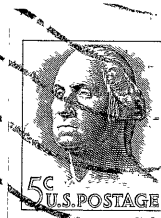
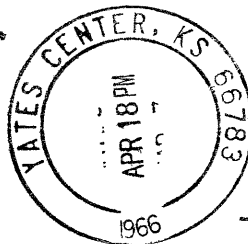
Signature of Operator J.F. Wingrave



RECEIVED
STATE CORPORATION COMMISSION

APR 22 1966

CONSERVATION DIVISION
Wichita, Kansas



4-22-66

State Corporation Commission of Kansas
Conservation Division
500 Insurance Building
212 North Market
Wichita 2, Kansas

RECEIVED
STATE CORPORATION COMMISSION

APR 19 1966

CONSERVATION DIVISION
Wichita, Kansas

(IF PREFERRED, MAIL IN ENVELOPE)