

**RECEIVED**  
KANSAS CORPORATION COMMISSION  
OIL & GAS CONSERVATION DIVISION  
**WELL PLUGGING APPLICATION** **AUG 25 2006**  
Please TYPE Form and File ONE Copy  
KANSAS CORPORATION COMMISSION  
CONSERVATION DIVISION  
WICHITA, KS

Form CP-1  
September 2003  
This Form must be Typed  
Form must be Signed  
All blanks must be Filled

API # 15 - 185-20605 - 00-00 (Identifier Number of this well). This must be listed for wells drilled since 1967; if no API # was issued,

indicate original spud or completion date 10/3/75

Well Operator: Citation Oil & Gas Corp. KCC License #: 03553  
(Owner / Company Name) (Operator's)

Address: P O Box 690688 City: Houston

State: Texas Zip Code: 77269 Contact Phone: (281) 517 - 7309

Lease: Elinor Krampe Well #: 2 Sec. 33 Twp. 21 S. R. 14  East  West

- SW - NE - SE Spot Location / QQQQ County: Stafford

1550 Feet (in exact footage) From  North /  South (from nearest outside section corner) Line of Section (Not Lease Line)

990 Feet (in exact footage) From  East /  West (from nearest outside section corner) Line of Section (Not Lease Line)

Check One:  Oil Well  Gas Well  D&A  Cathodic  Water Supply Well  
 SWD Docket # \_\_\_\_\_  ENHR Docket # E-17848  Other: \_\_\_\_\_

Conductor Casing Size: \_\_\_\_\_ Set at: \_\_\_\_\_ Cemented with: \_\_\_\_\_ Sacks

Surface Casing Size: 8 5/8 Set at: 298' Cemented with: 250 Sacks

Production Casing Size: 5 1/2 Set at: 3860' Cemented with: 415 Sacks

List (ALL) Perforations and Bridgeplug Sets: Perforations 3555'-3560'; 3592'-3600'; 3617'-3622'

Elevation: 1940' ( G.L. /  K.B.) T.D.: 3860' PBTD: 3832' Anhydrite Depth: \_\_\_\_\_  
(Stone Corral Formation)

Condition of Well:  Good  Poor  Casing Leak  Junk in Hole

Proposed Method of Plugging (attach a separate page if additional space is needed): See attached procedure to plug and abandon

Is Well Log attached to this application as required?  Yes  No Is ACO-1 filed?  Yes  No

If not explain why? There was a copy of Kansas drillers log in file buy no copy of an ACO-1 in well file. Unknown if one ever filed.

**Plugging of this Well will be done in accordance with K.S.A. 55-101 et. seq. and the Rules and Regulations of the State Corporation Commission.**

List Name of Company Representative authorized to be in charge of plugging operations: Jeff Teare Engineer

Phone: (281) 517 - 7199

Address: P O Box 690688 City / State: Houston, Texas 77269

Plugging Contractor: Engineer soliciting bids at present KCC License #: 31925  
(Company Name) (Contractor's)

Address: \_\_\_\_\_ Phone: ( ) -

Proposed Date and Hour of Plugging (if known?): Upon approval

Payment of the Plugging Fee (K.A.R. 82-3-118) will be guaranteed by Operator or Agent

Date: 6/19/06 Authorized Operator / Agent: Sharon Wood  
8/28/06 (Signature)

Mail to: KCC - Conservation Division, 130 S. Market - Room 2078, Wichita, Kansas 67202

AUG 25 2006

CONSERVATION DIVISION  
WICHITA, KS

**WORKOVER PROCEDURE**

PROJECT: Krampe #2 WIW: Plug and Abandon

DRILLED & COMPLETED: 10/75 LAST WO: 9/04 – Pulled for HIT, found bad thread on jt #50. After resetting PKR, noted HIC w/ 1.5 BPM pump-in @ 0#. Unknown depth of HIC.

LOCATION: SW NE SE Sec. 33 - T21S - R14W

FIELD: West Hickman COUNTY: Stafford STATE: KS

TD: 3860' PBDT: 3832' DATUM: 1940' KB to GL: 9'

**CASING AND LINER RECORD**

SIZE	WEIGHT	DEPTH	CEMENT	HOLE SIZE	TOC	REMARKS
8 5/8"	24#	298'	250 sx	12 1/4"	Surface	Circulated 35 sx
5 1/2"	14#	3860'	415 sx	7 7/8"	2350'	T-Survey

PRESENT FORMATION AND COMPLETION: LKC: (H) 3555' – 3560', (J) 3592' – 3600', (K) 3616' – 3622'

TUBING: 1 – 8', 1 – 6' 2 3/8" IPC tubing subs, 111 jts 2 3/8" 4.7 # J-55 8rd EUE IPC tubing, Baker 2 3/8" x 5 1/2" A-3 Lok-Set PKR w/ tubing collar on bottom. PKR set @ 3509' KB, BOPKR @ 3511' KB

RODS: N/A

MISC.: 10/96 – Injection Profile indicates all fluid going past PB @ 3557'. 9/98 – Acidize all perforated intervals, CO 2 1/16" tubing w/ 2 3/8" 4.7# J-55 IPC tbg. Passed MIT – 300#/15 min. RTI.

**PROCEDURE**

- **Notify KCC District 1 @ (620) 225-8888 48 hours before planned work.**
- **Dig & Line WO Pit.**
- **9+ ppg Mud Laden Fluid required between cement plugs.**
- 1. MI RU PU. Release Baker A-3 Lok-Set PKR @ 3509'. NU BOP. TOOH & LD Injection tubing & PKR.
- 2. MI RU WL unit. PU & RIH w/ CIBP & set @ ± 3505'. POOH w/ setting tool. PU & RIH w/ dump bailer and dump 2 sx cement on CIBP. POOH & RD WL.
- 3. PU & RIH w/ 2 3/8" WS to TOC @ ± 3475'. RU cement pump truck. Mix & Circulate 9+ ppg MLF to ± 920' (~62 Bbls). POOH & LD WS.
- 4. RU WL. RIH & perforate 5 1/2" casing @ 920' w/ 4 spf. POOH & LD perf gun. RD WL.
- 5. PU 2 jts 2 3/8" WS. Attempt to establish injection rate into perfs @ 920'. Monitor 5 1/2" x 8 5/8" annulus for returns. If circulation is established, mix and pump 350 sx cement and circulate hole. Top off casing with cement.

**NOTE:** If circulation is NOT established - POOH w/ 2 jts WS, RU WL and RIH w/ additional CIBP & set @ ± 930'. POOH w/ WL & RD. Attempt to break circulation and pump cement as required via perfs @ 920'.

6. RD MO Cement pump truck & PU.
7. Cut off WH & csg 3' below GL. Cut off anchors, back fill cellar & WO pit. Reclaim location.

RECEIVED  
KANSAS CORPORATION COMMISSION

AUG 7 2006

CONSERVATION DIVISION  
WICHITA, KS

RECEIVED  
KANSAS CORPORATION COMMISSION

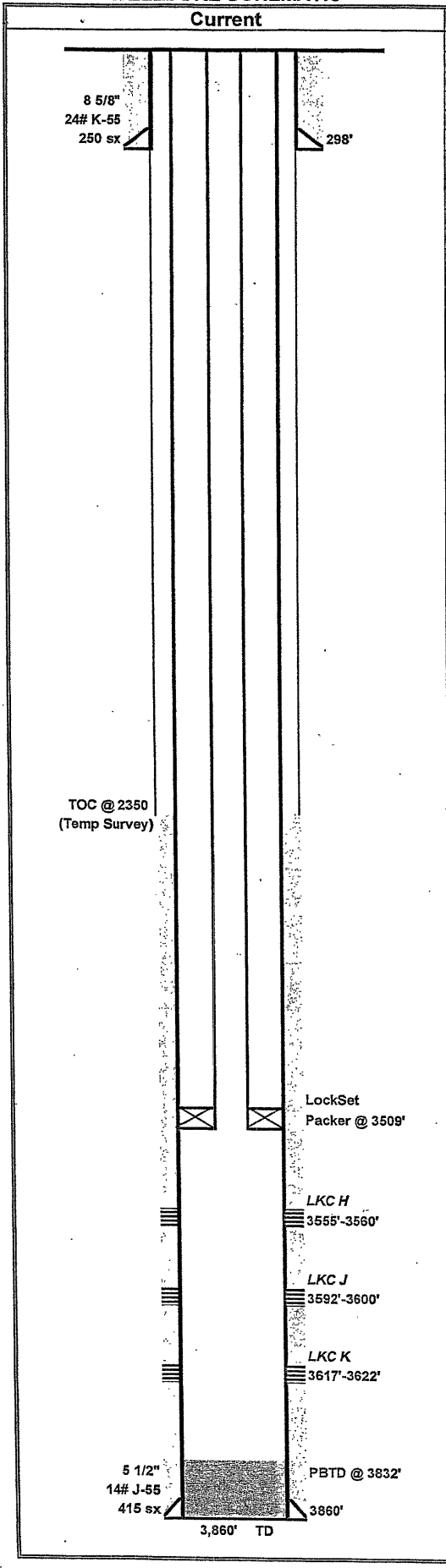
AUG 25 2006

CONSERVATION DIVISION  
WICHITA, KS





**WELLBORE SCHEMATIC**



Lease:	Elinor Krampe		Well No.	2	
API No.	15-185-20605		Status	SI WIW	
Location:	SW NE SE Sec. 33-T21S-R14W				
County:	Stafford	State:	KS	Field:	West Hickman
TD	3860'	GL	1940'	Spud Date:	10/31/1975
PBTD	3832'	KB	1949'	Comp Date:	10/31/1975
Current Perfs/OH:	see schematic		Current Zone:	LKC	

**Surface Equipment:**

Unit Make:	Unit Size:	
Unit S/N:	Unit Rotation:	
SPM:	Stroke Length:	Unit Sheave:
Prime Mover:	Motor Sheave:	
Motor S/N:	Motor RPM:	

**Casing Breakdown:**

	Size	Grade / Wt	Depth	Cement
Surface	8 5/8"	24# K-55	298'	250 sx
Production	5 1/2"	14# J-55	3860'	415 sx
Production				
Production				
Liner				

**Tubing Breakdown:**

Qty	Description	Footage
	KB	7.00'
1	IPC Sub	8.00'
1	IPC Sub	6.00'
111	2 3/8" IPC tubing	3486.10'
	LockSet Packer	3.90'
<b>TOTAL</b>		<b>3511.00'</b>

**Rod Breakdown:**

Qty	Description	Footage
<b>TOTAL</b>		<b>0.00'</b>

**Comments:**

**RECEIVED**  
**KANSAS CORPORATION COMMISSION**  
**AUG 25 2006**  
**CONSERVATION DIVISION**  
**WICHITA, KS**

PREPARED BY: JTT | UPDATED: 6/15/2006

**KANSAS DRILLERS LOG**

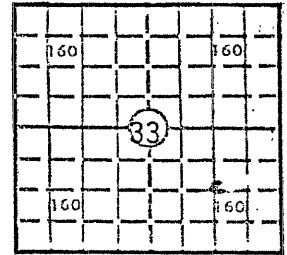
S. 33 T. 21 R. 14 <sup>X</sup><sub>W</sub>

API No. 15 — 185 — 20,605 -00-00  
County Number

Loc. SW NE SE

County Stafford

640 Acres  
N



Elev.: Gr. 1940  
Locate well correctly

DF 1947 KB 1949

Operator Tenneco Oil Company

Address 3000 United Founders Blvd. Oklahoma City, Oklahoma 73112

Well No. #2 Lease Name Elinor Krampe

Footage Location 1650 1650  
feet from (N) (S) line feet from (E) (W) line

Principal Contractor Sterling Drlg. Company Geologist Tim Collins

Spud Date 10-3-75 Total Depth 3860 P.B.T.D. 3832

Date Completed 10-31-75 Oil Purchaser \_\_\_\_\_

**CASING RECORD**

Report of all strings set— surface, intermediate, production, etc.

Purpose of string	Size hole drilled	Size casing set (in O.D.)	Weight lbs/ft.	Setting depth	Type cement	Sacks	Type and percent additives
Surface Casing	12 1/4"	8 5/8"	24#	298	60-40 Pozmix	250	2% Gel + 3% CaC
Long String	7 7/8"	5 1/2"	14#	3869	Halco Lite 50-50 Poz	200 215	2% Gel 18% Salt & 75%

**LINER RECORD**

**PERFORATION RECORD**

Top, ft.	Bottom, ft.	Sacks cement	Shots per ft.	Size & type	Depth interval
					3555-60; 3592-0 3617-22

Size	Setting depth	Packer set at
2 7/8"	3660	

**ACID, FRACTURE, SHOT, CEMENT SQUEEZE RECORD**

Amount and kind of material used	Depth interval treated

**RECEIVED**  
 KANSAS CORPORATION COMMISSION  
 AUG 25 2006  
 CONSERVATION DIVISION  
 WICHITA, KS

**INITIAL PRODUCTION**

Date of first production 10-31-75 Producing method (flowing, pumping, gas lift, etc.) Pumping

RATE OF PRODUCTION PER 24 HOURS	Oil <u>27</u> bbls.	Gas <u>None</u> MCF	Water <u>84</u> bbls.	Gas-oil ratio	CFPB
---------------------------------	---------------------	---------------------	-----------------------	---------------	------

Disposition of gas (vented, used on lease or sold) \_\_\_\_\_ Producing interval (s) \_\_\_\_\_

INSTRUCTIONS: As provided in KCC Rule 82-2-125, within 90 days after completion of a well, one completed copy of this Drillers Log shall be transmitted to the State Geological Survey of Kansas, 4150 Monroe Street, Wichita, Kansas 67209. Copies of this form are available from the Conservation Division, State Corporation Commission, 3830 So. Meridian (P.O. Box 17027), Wichita, Kansas 66217. Phone AC 316-522-2206. If confidential custody is desired, please note Rule 82-2-125. Drillers Logs will be on open file in the Oil and Gas Division, State Geological Survey of Kansas, Lawrence, Kansas 66044.

Operator

Tenneco Oil Company

DESIGNATE TYPE OF COMP.: OIL, GAS, DRY HOLE, SWD, ETC.:

Well No.

2

Lease Name

Elinor Krampe

Oil Well

S 33 T21S R 14X W

Stafford County, Kansas

WELL LOG

Show all important zones of porosity and contents thereof; cored intervals, and all drill-stem tests, including depth interval tested, cushion used, time tool open, flowing and shut-in pressures, and recoveries.

SHOW GEOLOGICAL MARKERS, LOGS RUN, OR OTHER DESCRIPTIVE INFORMATION.

FORMATION DESCRIPTION, CONTENTS, ETC.	TOP	BOTTOM	NAME	DEPTH
SAND	0'	246'		
SHALE	246'	300'		
SHALE AND SAND	300'	856'		
ANHYDRHE	856'	880'		
SAND, SHALE, SHELLS	880'	1725'		
LIME AND SHALE	1725'	3020'		
LIME	3020'	3206'		
SHALE (HEEBNAR)	3206'	3212'		
LIME AND SHALE	3212'	3346'		
SHALE AND SANDY SHALE	3346'	3418'		
LIME	3418'	3435'		
LIME AND SHALE	3435'	3550'		
LIME	3550'	3645'		
LIME AND SHALE	3645'	3840'		
ANHYDRHE	3840'	3860'		
T.D.		3860'		
P.B.T.D.		3832'		

USE ADDITIONAL SHEETS, IF NECESSARY, TO COMPLETE WELL RECORD.

Date Received

*Ann B. Wright*

Signature

Clerical Supervisor

Title

November 13, 1975

Date

ENNECO OIL CO.

SEP 17 1975

RECEIVED





RECEIVED  
KANSAS CORPORATION COMMISSION  
AUG 25 2006  
CONSERVATION DIVISION  
WICHITA, KS

August 24, 2006

Kansas Corporation Commission  
Conservation Division  
130 S Market Room 2078  
Wichita, KS 67202

Attn: Deanna Garrison

Re: Elinor Krampe 2  
SW NE SE Sec. 33-21S-14W  
Stafford County, KS

Dear Ms. Garrison:

Per our conversation I am sending you form CP-1 for approval. Please fax a copy of your approval to me at 281-469-9667 so that we can proceed with the plugging process.

If you require additional information, please contact the undersigned, at 281-517-7309. Thank you.

Sincerely,

Sharon Ward  
Permitting Manager  
Citation Oil & Gas Corp.

RECEIVED  
KANSAS CORPORATION COMMISSION  
AUG 25 2006  
CONSERVATION DIVISION  
WICHITA, KS

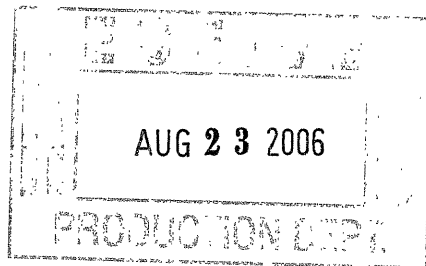
KANSAS

CORPORATION COMMISSION

KATHLEEN SEBELIUS, GOVERNOR  
BRIAN J. MOLINE, CHAIR  
ROBERT E. KREHBIEL, COMMISSIONER  
MICHAEL C. MOFFET, COMMISSIONER

August 21, 2006

Citation Oil & Gas Corp.  
Attn: Sharon Ward  
8223 Willow Place South  
Houston TX 77070



**Re: Failed Mechanical Integrity Test  
Elinor Krampe #2  
SW NE SE Sec. 33-21S-14W, Stafford County, Kansas  
Docket No. # E-17848  
Operator License No. 3553**

Dear Operator:

On May 25, 2006 the above-referenced well was tested for Mechanical Integrity but did not pass the test. K.A.R. 82-3-407 states that:

Any well failing to demonstrate mechanical integrity ... shall have no more than 90 days from the date of initial failure in which to either:

- (1) repair and retest the well to demonstrate mechanical integrity;
- (ii) plug the well; or
- (iii) isolate the leak or leaks to demonstrate that the well will not pose a threat to fresh or usable water resources or endanger correlative rights.

**The 90-day period within which you must meet the above-stated requirements expires November 21, 2006.** In the meantime, the well is not permitted to operate, and must be shut in until it complies with K.A.R. 82-3-407.

We ask that you contact this office as soon as possible, to let us know what your plans are for bringing the well into compliance with K.A.R. 82-3-407. **Failure to comply with K.A.R. 82-3-407 may result in formal Commission enforcement action, including a monetary penalty of \$1000.00.**

Thank you for your cooperation in this matter, and please call me if you have any questions.

Very truly yours,

Richard W. Lacey  
Compliance Officer

cc: UIC Department



KANSAS

CORPORATION COMMISSION

Kathleen Sebelius, Governor    Brian J. Moline, Chair    Robert E. Krehbiel, Commissioner    Michael C. Moffet, Commissioner

**NOTICE OF RECEIPT OF WELL PLUGGING APPLICATION (CP-1)**

Citation Oil & Gas Corp.  
8223 Willow Place South  
Houston, TX 77070-5623

August 31, 2006

Re: ELINOR KRAMPE #2  
API 15-185-20605-00-01  
SWNESE 33-21S-14W, 1550 FSL 990 FEL  
STAFFORD COUNTY, KANSAS

Dear Operator:

This letter is to notify you that the Conservation Division is in receipt of your plugging proposal, form CP-1, for the above-captioned well.


Your CP-1 has been reviewed by the Conservation Division central office for completeness and to verify license numbers. The plugging proposal will now be forwarded to the district office listed below for review of your proposed method of plugging.

**Please contact the district office for approval of your proposed plugging method at least five (5) days before plugging the well, pursuant to K.A.R. 82-3-113 (b). If a workover pit will be used during the plugging of the well it must be permitted. A CDP-1 form must be filed and approved prior to the use of the pit.**

The Conservation Division's review of form CP-1, either in the central or district office, does not include an inquiry into well ownership or the filing operator's legal right to plug the well.

**This notice in no way constitutes authorization to plug the above-captioned well by persons not having legal rights of ownership or interest in the well. This notice is void after ninety (90) days from the above date.**

District: #1  
210 E Frontview, Suite A  
Dodge City, KS 67801  
(620) 225-8888

Sincerely  


David P. Williams  
Production Supervisor