

TYPE

NOTICE OF INTENTION TO DRILL

CORRECTION

C-1

TO BE FILED WITH THE STATE CORPORATION COMMISSION
PRIOR TO COMMENCEMENT OF WELL

API Number 15-207-21,193
(For office use only) 00-00

1. Operator Leis & Davis

Starting Date 8-20-77

Address RR # 4 Yates Center, KS 66783

County Woodson

2. Contractor Victor Leis Drilling

Sec 22 Twp 25 S Rge 15 (E)

Address Yates Center, KS

* Spot Location NW-SE-NE

3. Type of Equipment: Rotary X Cable Tool

Nearest Lease Line 540 ft.

4. Well to be Drilled for: Oil X Gas

Lease Name Harder

Disposal Input Other

5. Depth of Deepest Fresh Water within 1 mile 120 ft.

6. Depth of Municipal Water Well within 3 miles 120 ft.

7. Depth to Protect all Fresh Water 150 ft.

8. Amount of Surface Casing to be set 150 ft.

9. Alternate No. 1 X No. 2 W

Est. Total Depth 2430 ft.

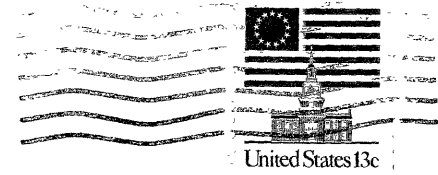
REMARKS:

OPERATOR STATES THAT HE WILL COMPLY WITH K. S. A. 55-128

Signature of Operator

John T. Davis OK

* WAS - NE-NE-NE



State Corporation Commission of Kansas
Conservation Division
245 North Water
Wichita, Kansas 67202

RECEIVED
THE CORPORATION COMMISSION

AUG 28 1977

CC CONSERVATION DIVISION
Wichita, Kansas

8-26-77

(IF PREFERRED, MAIL IN ENVELOPE)