

TYPE

NOTICE OF INTENTION TO DRILL

C-1

TO BE FILED WITH THE STATE CORPORATION COMMISSION
PRIOR TO COMMENCEMENT OF WELL

API Number 15-207-21,153
(For office use only) 00-00

1. Operator Laidlaw & Galemore

Starting Date June 8, 1977

Address Box 37, Yates Center, Ks. 66783

County Woodson

2. Contractor K & L Drilling Company

Sec 35 Twp 25 S Rge 15 ~~SW~~
1390' E of W Line: 1500' S of N Line
Spot Location Center of SW $\frac{1}{4}$ - SW

Address Box 85, Neosho Falls, Kansas 66758

3. Type of Equipment: Rotary X Cable Tool

4. Well to be Drilled for: Oil X Gas

Disposal Input Other

5. Depth of Deepest Fresh Water within 1 mile none ft.

6. Depth of Municipal Water Well within 3 miles none ft.

7. Depth to Protect all Fresh Water 150 ft.

8. Amount of Surface Casing to be set 50 ft.

9. Alternate No. 1 No. 2 X

Nearest Lease Line 600 ft.

Lease Name Tom Laidlaw

Well No. 2

Est. Total Depth 1450 ft.

REMARKS:

OPERATOR STATES THAT HE WILL COMPLY WITH K. S. A. 55-128

Signature of Operator

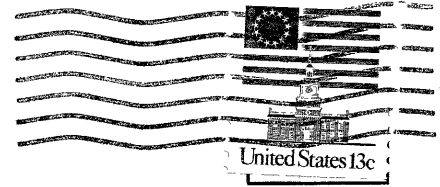
Kenneth Layman

RECEIVED
STATE CORPORATION COMMISSION

JUN 10 1977

CONSERVATION DIVISION
WICHITA, KANSAS

6-10-77



State Corporation Commission of Kansas
Conservation Division
245 North Water
Wichita, Kansas 67202

RECEIVED
STATE CORPORATION COMMISSION

JUN 06 1977

CONSERVATION DIVISION
WICHITA, KANSAS

(IF PREFERRED, MAIL IN ENVELOPE)