

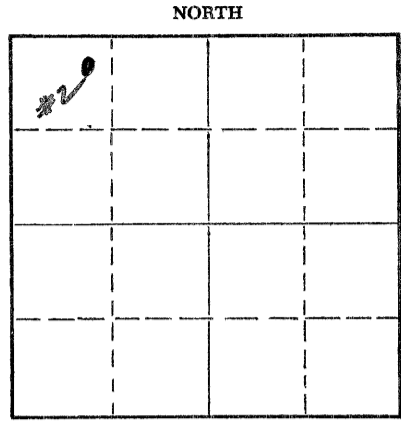
STATE OF KANSAS
STATE CORPORATION COMMISSION

WELL PLUGGING RECORD

Give All Information Completely
Make Required Affidavit
Mail or Deliver Report to:
Conservation Division
State Corporation Commission
800 Bittling Building
Wichita, Kansas

Rocks _____ County. Sec. 17 Twp. 9S Rge. 18W (~~2E~~) (W)

Location as "NE/CNW/SW" or footage from lines NE NW NW
Lease Owner Sinclair Oil & Gas Company
Lease Name W. P. Stahl Well No. 2
Office Address P. O. Box 521, Tulsa, Oklahoma
Character of Well (completed as Oil, Gas or Dry Hole) Oil
Date well completed February 22, 19 49
Application for plugging filed September 15, 19 55
Application for plugging approved September 16, 19 55
Plugging commenced October 9, 19 55
Plugging completed October 17, 19 55
Reason for abandonment of well or producing formation Oil depleted.



Locate well correctly on above Section Plat

If a producing well is abandoned, date of last production September 9, 19 55
Was permission obtained from the Conservation Division or its agents before plugging was commenced? Yes

Name of Conservation Agent who supervised plugging of this well Eldon Petty
Producing formation Arbuckle Depth to top 3545 Bottom 3549 Total Depth of Well 3647 Feet
Show depth and thickness of all water, oil and gas formations. Plugged back total depth 3614'

OIL, GAS OR WATER RECORDS

CASING RECORD

FORMATION	CONTENT	FROM	TO	SIZE	PUT IN	PULLED OUT
Arbuckle Lime	Depleted	3545'	3549	10-3/4"	307'	None
				7"	3646'	1182'

Describe in detail the manner in which the well was plugged, indicating where the mud fluid was placed and the method or methods used in introducing it into the hole. If cement or other plugs were used, state the character of same and depth placed, from _____ feet to _____ feet for each plug set.

Cleaned out to TD at 3647'
Filled with sand 3647' to 3540'
Cemented from 3540' to 3520'
Mudded from 3520' to 307'
Rock bridge 307' to 297'
Cemented 297' to 257'.
Mudded from 257' to 15'
Cemented from 15' to 0'
Welded cap on 10-3/4" surface casing.

RECEIVED
STATE CORPORATION COMMISSION
11-9-55
DIVISION

(If additional description is necessary, use BACK of this sheet)
Name of Plugging Contractor West Supply Company
Address Chase, Kansas

STATE OF Kansas, COUNTY OF Rice, ss.
W. B. Rhees (employee of owner) or (~~owner or operator~~) of the above-described well, being first duly sworn on oath, says: That I have knowledge of the facts, statements, and matters herein contained and the log of the above-described well as filed and that the same are true and correct. So help me God.

(Signature) W. B. Rhees
Chase, Kansas (Address)

SUBSCRIBED AND SWORN TO before me this 7th day of Nov., 19 55

My commission expires April 24-1956
W. B. Garrison Notary Public.

PLUGGING
FILE SEC. 17 T9 R 18W
BOOK PAGE 150 LINE 21

SINCLAIR OIL & GAS COMPANYWELL LOG

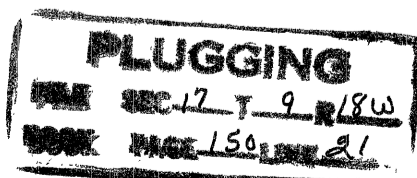
W. P. STAHL - Well #2
 NE NW NW - 17 - 9S - 18W
 McHale Pool
 Rooks County - KANSAS

SPUDED: February 10, 1949
 CONTRACTOR: Herbar Drilling Co.
 Wichita, Kansas
 DRILLING COMP: February 22, 1949
 FIRST PRODUCTION: March 11, 1949
 ELECTRIC LOG: Schlumberger Feb. 22, 1949

ELEVATION: DF 2110'
 PAY - Arbuckle
 TOP: " 3545' GLM
 Perf. 3545-4549'
 MAX. DEPTH REACHED: 3647'
 PBTD 3644'
 10 3/4" Csg. 307' (175 Str)
 7" OD 23# " 3646' (150 Str)

DRILLERS LOG
 (Corrected GLM)

Surface Clay & Sand	125'
Shale & Shells	310'
Shale - Sand	735
Shale	795
Shale-Sand	1225
Shale-Red Beds	1260
Shale & Shells	1465
Red Bed-Shale	1515
Anhydrite (Top=1510')	1555
Shale & Shells	1635
Shale	1695
Shale-Shells	2205
Lime	2260
Lime & Shale	2750
Shale-Lime Shells	3090'
Lime-Shale	3145
Lime	3647 (TD)



9-16-55
 RECEIVED DIVISION
 Wichita, Kansas