

TYPE OR PRINT

# NOTICE OF INTENTION TO DRILL

C-1

15-163-20,026-00-00

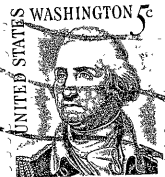
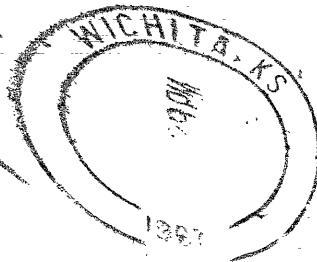
TO BE FILED WITH THE STATE CORPORATION COMMISSION PRIOR TO COMMENCEMENT OF WELL

1. Operator Hinkle Oil Co Address 1016 Union Gr - Wichita
2. Lease name KERN Well No. 1 County ROCKS
3. Well Location NW 5E NW Sec. 15 Township 9S Range 20W
4. Well to be drilled 990 ft. from nearest lease line.
5. Drilling Contractor RED TIGER Address WICHITA
6. Type of equipment: Rotary ☒ Cable Tool ☐ Approx. date operation to begin 6-2- 1967.
7. Well to be drilled for Oil ☒ Gas ☐ Disposal ☐ Input ☐ Estimated Total Depth of Well 3650 ft.
8. Depth of deepest fresh water well within one mile of location 90 ft. If none exists, write NONE.
9. Ground elevation at location is approx.        ft. higher or        ft. lower than ground elevation at water well.
10. Depth of the deepest municipal water well within three miles of location 90 ft. If none exists, write NONE.
11. Operator states that he will set surface pipe at least 25 ft. below all Tertiary or unconsolidated deposits and, taking into consideration differences in ground elevations, that the minimum depth necessary, to the best of his knowledge and belief, to protect all fresh water zones is 200 ft. and operator agrees to set surface pipe at this location to a depth of not less than 200 ft. Alternate 1 ☒ Alternate 2 ☒.

REMARKS:

Signature of Operator

HINKLE OIL CO  
Orville Howell



**State Corporation Commission of Kansas  
Conservation Division  
500 Insurance Building  
212 North Market  
Wichita, Kansas 67202**

**RECEIVED**  
STATE CORPORATION COMMISSION

**MAY 31 1967  
5-31-67  
CONSERVATION DIVISION  
Wichita, Kansas**

**(IF PREFERRED, MAIL IN ENVELOPE)**