

TYPE OR PRINT

NOTICE OF INTENTION TO DRILL

C-1

15-065-20, 031-00-00

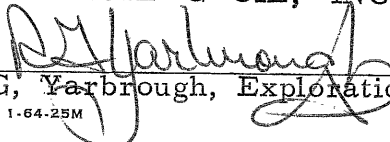
TO BE FILED WITH THE STATE CORPORATION COMMISSION PRIOR TO COMMENCEMENT OF WELL

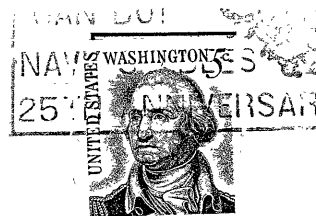
1. Operator THREE G OIL, INC. Address 1101 Wichita Plaza - Wichita, Kansas
2. Lease name HERROLD Well No. 1 County Graham
3. Well Location NW NE SE Sec. 3 Township 9S Range 21W
4. Well to be drilled 330 ft. from nearest lease line.
5. Drilling Contractor Leben Drilling, Inc. Address 815 Wichita Plaza - Wichita, Kansas
6. Type of equipment: Rotary Cable Tool Approx. date operation to begin April 7 1967.
7. Well to be drilled for Oil Gas Disposal Input Estimated Total Depth of Well 3800 ft.
8. Depth of deepest fresh water well within one mile of location _____ ft. If none exists, write NONE None.
9. Ground elevation at location is approx. _____ ft. higher or _____ ft. lower than ground elevation at water well.
10. Depth of the deepest municipal water well within three miles of location _____ ft. If none exists, write NONE None.
11. Operator states that he will set surface pipe at least 25 ft. below all Tertiary or unconsolidated deposits and, taking into consideration differences in ground elevations, that the minimum depth necessary, to the best of his knowledge and belief, to protect all fresh water zones is 200 ft. and operator agrees to set surface pipe at this location to a depth of not less than 225 ft. Alternate 1 Alternate 2 .

REMARKS:

THREE G OIL, INC.

Signature of Operator


R. G. Yarbrough, Exploration Manager



**State Corporation Commission of Kansas
Conservation Division
500 Insurance Building
212 North Market
Wichita, Kansas 67202**

RECEIVED
STATE CORPORATION COMMISSION
4/6/67
APR 6 1967
CONSERVATION DIVISION
Wichita, Kansas

(IF PREFERRED, MAIL IN ENVELOPE)