

15-163-03544-00-00

Form CP-3
Rev. 6-9-67

KANSAS



STATE CORPORATION COMMISSION

CONSERVATION DIVISION AGENT'S REPORT

RECEIVED
STATE CORPORATION COMMISSION
JAN 8 1968
CONSERVATION DIVISION
Wichita, Kansas

J. P. Roberts
Administrator
500 Insurance Building
Wichita, Kansas 67202

Operator's Full Name Clinton Oil Company

Complete Address 6810 West Highway 54 Wichita, Ks. 67209

Lease Name C. RGish Well No. 1

Location SW SE SW Sec. 36 Twp. 9 Rge. 20 (E) (W) X

County Rooks Total Depth 3800'

Abandoned Oil Well X Gas Well Input Well SWD Well D & A

Other well as hereafter indicated

Plugging Contractor Knights Casing Pulling

Address Box 405 Chase, Ks. License No. 436

Operation Completed: Hour 5 P Day 5 Month 1 Year 1968

The above well was plugged as follows:

Total Depth 3800' 8 5/8 csg set at 252' cwc.

5 1/2 csg set at 3796' cw 150 sc cement.

PBTD 3600' and perf. (3506-10)

Filled with sand to 3475' and dumped 5 sc cement with dump bailer.

Dakato squeezed. Recov. 328' of 5 1/2 csg.

Pumped down 8 5/8 csg with 30 sc gel W/4 hulls and 80 sc cement. Shutin pres. 200 lbs.

I hereby certify that the above well was plugged as herein stated.

Signed: Geo J. Manning
Well Plugging Supervisor

DATE 1/8/68
INV. NO. 7056-W

State of Kansas



ROBERT B. DOCKING Governor
WILLIAM L. MITCHELL Chairman
JAMES O. GREENLEAF Commissioner
DALE E. SAFFELS Commissioner
RAYMOND B. HARVEY Secretary
E. EDWARD JOHNSON Gen. Counsel

State Corporation Commission

CONSERVATION DIVISION

(Oil, Gas and Water)
500 Insurance Bldg. 212 N. Market
WICHITA, KANSAS 67202

RENEWED AUTHORITY
Original issued
August 16, 1967

January 3, 1968

RECEIVED
STATE CORPORATION COMMISSION
JAN - 8 1968
CONSERVATION DIVISION
Wichita, Kansas

WELL PLUGGING AUTHORITY

Well No.	1
Lease	C. R. Gish
Description	SW SE SW Sec. 36-9S-20W
County	Rooks
Total Depth	3800'
Plugging Contractor	Knight Casing Pulling Company, Inc.

Clinton Oil Company
6810 West Highway 54
Wichita, Kansas 67209

Gentlemen:

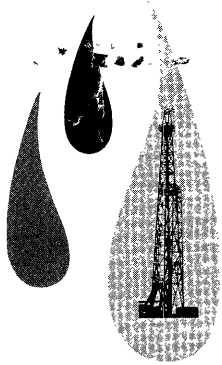
This is your authority to plug the above subject well in accordance with the Rules and Regulations of the State Corporation Commission.

This authority is void after 90 days from the above date.

Very truly yours,


J. P. Roberts, Administrator

Mr. Leo Massay, P. O. Box 582, Hays, Kansas 67601
is hereby assigned to supervise the plugging of the above
named well.



CLINTON OIL COMPANY

6810 WEST HI-WAY 54 • WICHITA, KANSAS 67209 • PHONE WH 3-1237, AREA CODE 316

January 16, 1968

State Corporation Commission of Kansas
Conservation Division
212 N. Market - 500 Insurance Bldg.
Wichita, Kansas 67202

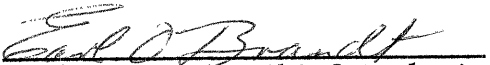
Re: Clinton Oil Co. #1 G.R. Gish (formerly
SW SE SW Sec. 36-9S-20W Continental Oil)
Rooks County, Kansas

Gentlemen:

We enclose original executed Form CP-4 Well Plugging Record as prepared by our Agent the plugging Contractor, Knight Casing Pulling Co., Inc., covering the above captioned well which has been plugged due to depletion.

A copy of the Drillers Log was previously forwarded with Application to Plug on August 14, 1967. This should now complete your file on this well.

Yours very truly,


Earl O. Brandt, Chief Geologist

EOB:cp
Enc.

Copy To: H. Wayne Hamilton - Clinton Office Great Bend, Ks. w/att.
Land Dept. w/att.
Prod. Dept. w/att.
Acctg. Dept. w/att.
Mason Lyons w/att.

RECEIVED
STATE CORPORATION COMMISSION
JAN 17 1968
CONSERVATION DIVISION
Wichita, Kansas