

TYPE OR PRINT

## NOTICE OF INTENTION TO DRILL

C-1

TO BE FILED WITH THE STATE CORPORATION COMMISSION PRIOR TO COMMENCEMENT OF WELL 15-125-20,387 00-00

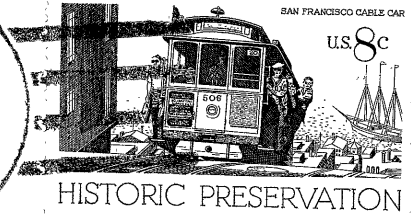
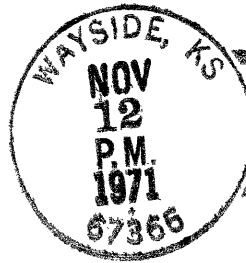
1. Operator H & H Oil Company Address Box #92-Wayside, Kansas 67366
2. Lease name Berry Well No. 3 County Montgomery
3. Well Location NW SW NW Sec. 9 Township 35-S Range 14-E
4. Well to be drilled 300 ft. from nearest lease line.
5. Drilling Contractor Layton Oil Company Address Box 263-Independence, Kansas 67301
6. Type of equipment: Rotary ☒ Cable Tool ☐ Approx. date operation to begin November 22 196 71
7. Well to be drilled for Oil ☒ Gas ☐ Disposal ☐ Input ☐ Estimated Total Depth of Well 1375 ft.
8. Depth of deepest fresh water well within one mile of location - ft. If none exists, write NONE None.
9. Ground elevation at location is approx. - ft. higher or - ft. lower than ground elevation at water well.
10. Depth of the deepest municipal water well within three miles of location - ft. If none exists, write NONE None.
11. Operator states that he will set surface pipe at least 25 ft. below all Tertiary or unconsolidated deposits and, taking into consideration differences in ground elevations, that the minimum depth necessary, to the best of his knowledge and belief, to protect all fresh water zones is - ft. and operator agrees to set surface pipe at this location to a depth of not less than 50 ft. Alternate 1 ☐ Alternate 2 ☒

REMARKS:

Will fill annulus to top with cement.

H & H OIL COMPANY

Signature of Operator [Signature]



**State Corporation Commission of Kansas  
Conservation Division  
500 Insurance Building  
212 North Market  
Wichita, Kansas 67202**

**RECEIVED  
STATE CORPORATION COMMISSION  
NOV 15 1971  
CONSERVATION DIVISION  
Wichita, Kansas**

11-15-71

**(IF PREFERRED, MAIL IN ENVELOPE)**