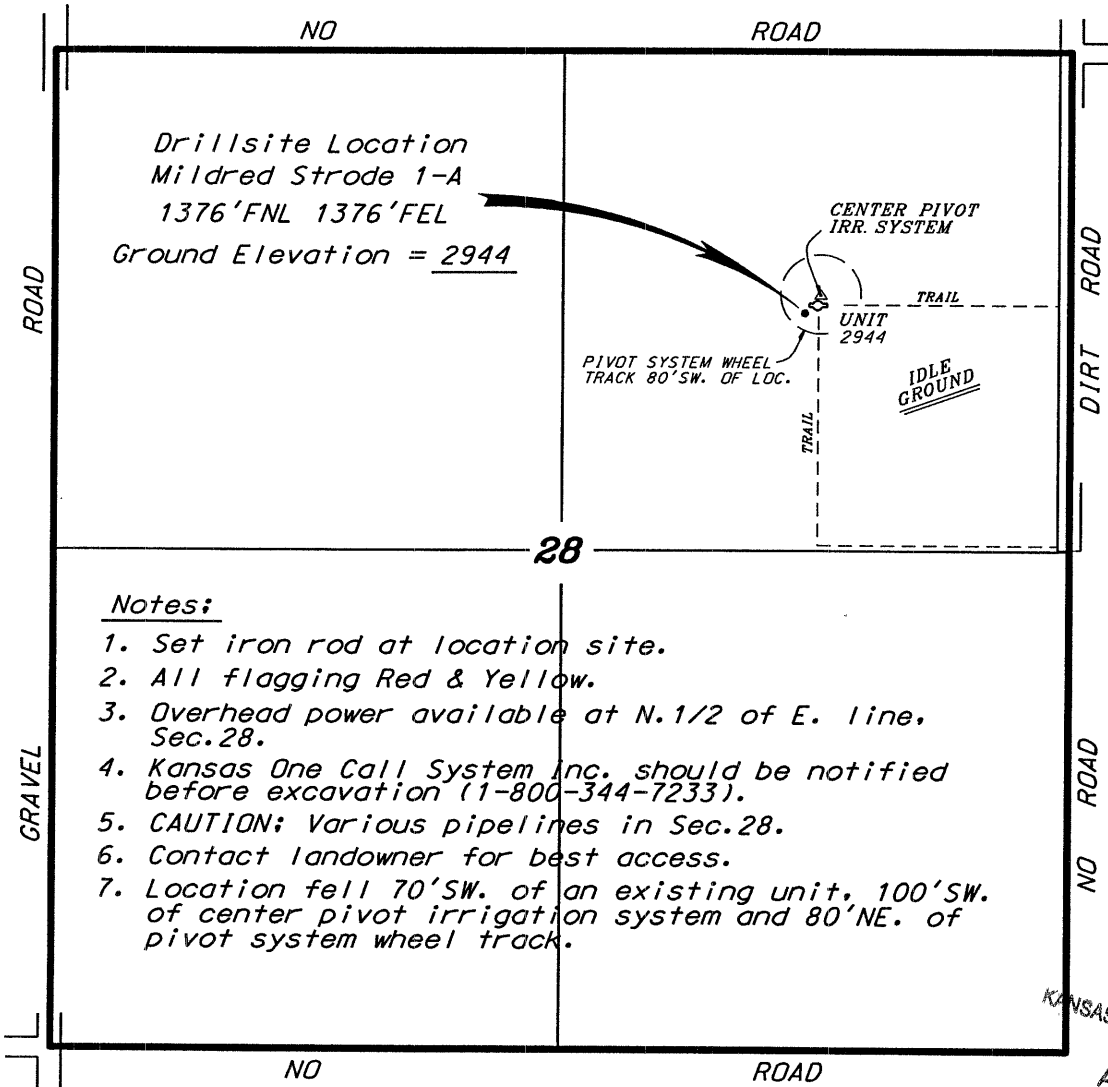


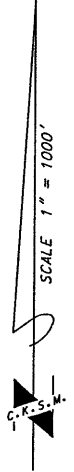
INTERMOUNTAIN REFINING COMPANY, INC.  
MILDRED STRODE LEASE  
NE. 1/4, SECTION 28, T18S, R31W  
SCOTT COUNTY, KANSAS



Notes:

1. Set iron rod at location site.
2. All flagging Red & Yellow.
3. Overhead power available at N. 1/2 of E. line, Sec. 28.
4. Kansas One Call System Inc. should be notified before excavation (1-800-344-7233).
5. CAUTION: Various pipelines in Sec. 28.
6. Contact landowner for best access.
7. Location fell 70' SW. of an existing unit, 100' SW. of center pivot irrigation system and 80' NE. of pivot system wheel track.

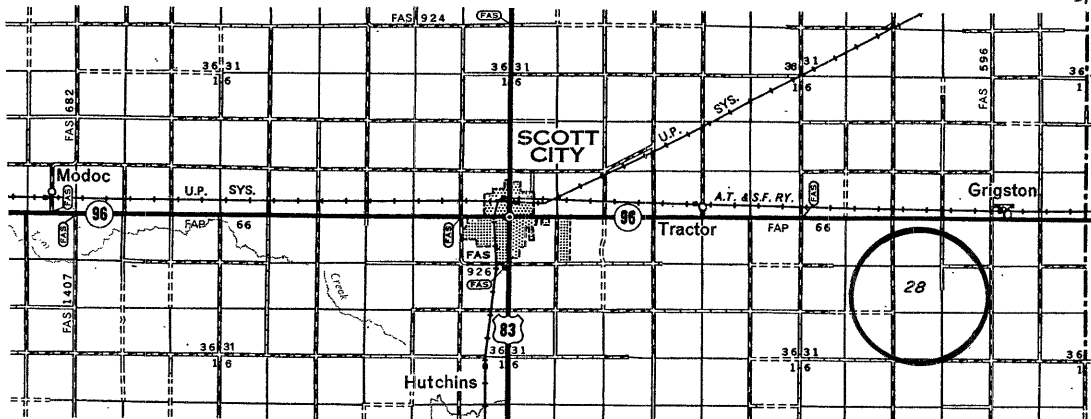
\* Ingress and egress to location as shown on this plat is per usage only and may not be legally opened for public use. Contact landowner, tenant and county road department for access.



RECEIVED  
KANSAS CORPORATION COMMISSION

APR 27 2007

CONSERVATION DIVISION  
WICHITA, KS



\* Controlling data is based upon the best maps and photographs available to us and upon a regular section of land containing 640 acres.

\* Approximate section lines were determined using the normal standard of care of oilfield surveyors practicing in the state of Kansas. The section corners, which establish the precise section lines, were not necessarily located, and the exact location of the drillsite location in the section is not guaranteed. Therefore, the operator securing this service and accepting this plat and all other parties relying thereon agree to hold Central Kansas Oilfield Services, Inc., its officers and employees harmless from all losses, costs and expenses and said entities released from any liability from incidental or consequential damages.

\* Elevations derived from National Geodetic Vertical Datum.

Date

April 19, 2007

CENTRAL KANSAS OILFIELD SERVICES, INC. (620)792-1977

15-171-20660-00-00



Drill Hole

Oil Well

Wells

KEYS T

MILDRED STRODE  
PA

Gas Well

Oil Well

Oil Well

15-171-20468-00-00