

FOR KCC USE:

FORM CB-1 12/93

FORM MUST BE TYPED

FORM MUST BE SIGNED

ALL BLANKS MUST BE FILLED IN

EFFECTIVE DATE: 8-19-07

State of Kansas

CATHODIC PROTECTION BOREHOLE INTENT

DISTRICT # 1  
SGA? ... Yes  No

Must be approved by the K.C.C. sixty (60) days prior to commencing well.

Expected Spud (Starting) Date Sept. 5, 2007  
month day year

Spot (Location) a/o/a SE/SE/NE East  
..... Sec 32... Twp .31. S, Rg .32. X West  
2870 feet from South North line of Section  
75 feet from East West line of Section  
(Circle directions from nearest outside corner boundaries)

OPERATOR: License # 32119

IS SECTION X REGULAR \_\_\_\_\_ IRREGULAR?

Name: Northern Natural Gas

(Spot well on the Section Plat on Reverse Side)

Address: RR 1

County: Seward

City/State/Zip: Kismet, KS. 67859

Contact Person: Galen Jay Salmans

Lease Name: Printz Well #: 1

Phone: 402-530-6221

Facility Name: Hugoton

Ground Surface Elevation: 2850 MSL

Cathodic Borehole Total Depth 170 ft.

Depth to Bedrock 475-500 ft.

CONTRACTOR: License #: 473

Name: Tyler Water Well, Inc.

WATER INFORMATION:

Aquifer Penetration:  None  Single  Multiple

Depth to bottom of fresh water: 475-500

Depth to bottom of usable water: 475-500

Water well within one-quarter mile:  yes  no

Public water supply well within one mile:  yes  no

Water Source for Drilling Operations:

well  farm pond  stream  other

Water Well Location: Kismet

DWR Permit #: N/A

Standard Dimension Ratio (SDR) is = 21  
(cathodic surface OD csg. in inches / MWI in inches = SDR)

Annular space between borehole and casing will be grouted

with:  Concrete  Bentonite Cement

Neat cement  Bentonite clay

Anode vent pipe will be set at: 3 ft. above surface

Anode conductor (backfill) material TYPE: Loresco SC-2

Depth to BASE of Backfill installation material: 170'

Depth to TOP of Backfill installation material: 10'

CONSTRUCTION FEATURES

Length of Cathodic Surface (Non-Metallic) Casing

Planned to be set: 20 ft.

Length of Conductor pipe (if any?): NA ft.

\* Surface casing borehole must be 16" or more.

Size of the borehole (I.D.): 9.75 inches

Cathodic surface casing size: 10.0 inches

Cathodic surface casing centralizers set at depths of: 20;

Cathodic surface casing will terminate at:  
 Above surface  Surface Vault  Below Surface Vault

Pitless casing adaptor will be used:  Yes  No at Depth NA ft.

Anode installation depths are: 30; 40; 50; 60;

70; 80; 90; 100; 110; 120; 130; 140; 150;

160; 170

Max TD = 170

AFFIDAVIT

The undersigned hereby affirms that the drilling, completion and eventual plugging of this well will comply with K.S.A. 55-101, et. seq. It is agreed that the following minimum requirements will be met:

1. Notify the appropriate district office prior to spudding of and again before plugging well;
2. A copy of the approved notice of intent to drill shall be posted on each drilling rig;
3. The minimum amount of cathodic surface casing as specified below shall be set by grouting to the top.
4. An agreement between the operator and the district office on plugs and placement is necessary prior to plugging;
5. The appropriate district office will be notified before well is either plugged or casing is grouted in;
6. IN ALL CASES, NOTIFY DISTRICT OFFICE PRIOR TO ANY CEMENTING.

I hereby certify that the statements made herein are true and to the best of my knowledge and belief.

Date: 8-13-07 Signature of Operator or Agent: James Huleck Title: V.P. Operations

Energy Economics Agent,  
as consultant for Northern  
Natural Gas.

FOR KCC USE: 175-22099-0000  
 API # 15- None feet  
 Conductor pipe required None feet  
 Minimum cathodic surface casing required 20 feet A11-3  
 Approved by: Aug 8-14-07  
 This authorization expires: 2-14-08  
 (This authorization void if drilling not started within  
 6 months of effective date.)  
 Spud date: \_\_\_\_\_ Agent: \_\_\_\_\_

RECEIVED  
KANSAS CORPORATION COMMISSION  
AUG 14 2007  
CONSERVATION DIVISION  
WICHITA, KS

32-31-32 W

REMEMBER TO:

- File Drill Pit Application (form CDP-1) with Intent to Install;
- File Completion Form CB-2 within 30 days of spud date;
- Notify appropriate district office 48 hours prior to workover or re-entry;
- Submit plugging report (CB-4) within 30 days after plugging is completed.

Mail to: KCC - Conservation Division, 130 S. Market - Room 2078, Wichita, Kansas 67202-1286.

**IN ALL CASES PLOT THE INTENDED WELL ON THE PLAT BELOW**

Show the relationship to other wells or facilities proposed to be serviced by the intended cathodic borehole. Please show all the wells, existing cathodic boreholes, pipelines or facilities within 1/2 mile of the proposed borehole.

API NO. 15- 175-22099-000  
 OPERATOR Northern Natural Gas  
 LEASE Printz  
 WELL NUMBER 1  
 FACILITY NAME Hugoton

LOCATION OF WELL: COUNTY Seward  
2870 feet from South/north line of section  
75 feet from East/west line of section  
 SECTION 32 TWP 31S RG 32W

SPOT: QTR/QTR/QTR/QTR OF ACREAGE  
NW - SE - SE - NE

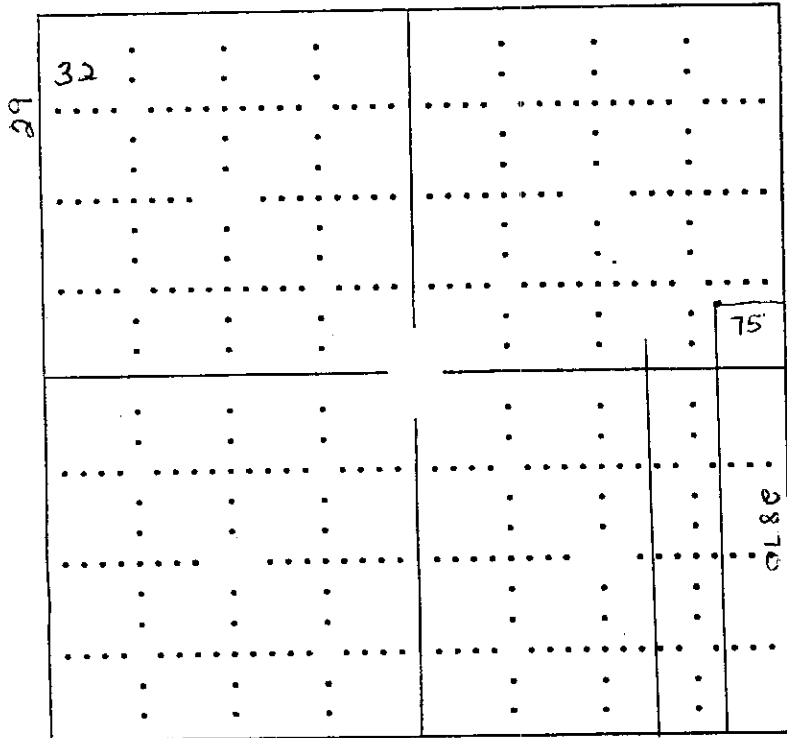
IS SECTION X REGULAR or IRREGULAR  
IF SECTION IS IRREGULAR, LOCATE WELL FROM NEAREST CORNER BOUNDARY.

Section corner used: NE NW X SE SW

**PLAT**

(Show location of intended cathodic borehole.)

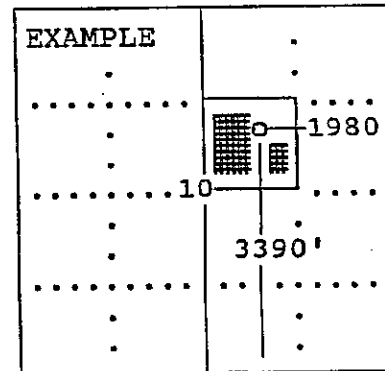
(Show footage from nearest lease, unit or outside section boundary line.)



RECEIVED  
 KANSAS CORPORATION COMMISSION

AUG 14 2007

CONSERVATION DIVISION  
 WICHITA, KS



SEWARD CO.

**In plotting the proposed location of the well, you must show:**

- 1) The manner in which you are using the depicted plat by identifying section lines, i.e. 1 section, 1 section with 8 surrounding sections, 4 sections, etc.;
- 2) the distance of the proposed drilling location from the section's south/north and east/west; and
- 3) the distance to the nearest lease, unit or outside section boundary line.

