

KCC
FEB 15 2005
CONFIDENTIAL

CONFIDENTIAL

KANSAS CORPORATION COMMISSION
OIL & GAS CONSERVATION DIVISION
WELL COMPLETION FORM
WELL HISTORY - DESCRIPTION OF WELL & LEASE

Form ACO-1
September 1999

Form Must Be Typed
ORIGINAL

Operator: License # 5447
Name: OXY USA Inc.
Address: P.O. Box 2528
City/State/Zip: Liberal, KS 67905
Purchaser: P&A
Operator Contact Person: Vicki Carder
Phone: (620) 629-4200
Contractor: Name: Murfin Drilling Co., Inc.
License: 30606
Wellsite Geologist: Marvin T. Harvey, Jr.

Designate Type of Completion:
 New Well Re-Entry Workover
 Oil SWD SLOW Temp. Abd.
 Gas ENHR SIGW
 Dry Other (Core, WSW, Expl, Cathodic, etc)

If Workover/Re-entry: Old Well Info as follows:
Operator: _____
Well Name: _____

Original Comp. Date: _____ Original Total Depth: _____
 Deepening Re-perf. Conv. To Enhr./SWD
 Plug Back Plug Back Total Depth
 Commingled Docket No. _____
 Dual Completion Docket No. _____
 Other (SWD or Enhr.?) Docket No. _____
10/19/04 10/30/04 10/30/04
Spud Date or Recompletion Date Date Reached TD Completion Date or Recompletion Date

API No. 15 - 175-21947-0000
County: Seward
NE - NW - SE - SE Sec 15 Twp. 32 S. R. 34W
1106 feet from (S) N (circle one) Line of Section
737 feet from (E) W (circle one) Line of Section
Footages Calculated from Nearest Outside Section Corner:
(circle one) NE (SE) NW SW
Lease Name: Kapp B Well #: 4
Field Name: _____
Producing Formation: NA
Elevation: Ground: 2915 Kelly Bushing: 2926
Total Depth: 6400 Plug Back Total Depth: _____
Amount of Surface Pipe Set and Cemented at 1750 feet
Multiple Stage Cementing Collar Used? Yes No
If yes, show depth set _____
If Alternate II completion, cement circulated from _____
feet depth to _____ w/ _____ sx cmt.

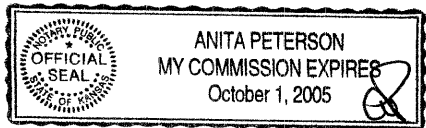
Drilling Fluid Management Plan ALT I P&A WITH
4-25-07
(Data must be collected from the Reserve Pit)
Chloride content 1500 mg/l ppm Fluid volume 1750 bbls
Dewatering method used Evaporation
Location of fluid disposal if hauled offsite: _____
Operator Name: _____
Lease Name: _____ License No.: _____
Quarter _____ Sec. _____ Twp, _____ S. R. East West
County: _____ Docket No.: _____

INSTRUCTIONS: An original and two copies of this form shall be filed with the Kansas Corporation Commission, 130 S. Market - Room 2078, Wichita, Kansas 6702, within 120 days of the spud date, recompletion, workover or conversion of a well. Rule 82-3-130, 82-3-106 and 82-3-107 apply. Information of side two of this form will be held confidential for a period of 12 months if requested in writing and submitted with the form (see rule 82-3-107 for confidentiality in excess of 12 months). One copy of all wireline logs and geologist well report shall be attached with this form. ALL CEMENTING TICKETS MUST BE ATTACHED. Submit CP-4 form with all plugged wells. Submit CP-111 form with all temporarily abandoned wells.

All requirements of the statutes, rules and regulations promulgated to regulate the oil and gas industry have been fully complied with and the statements herein are complete and correct to the best of my knowledge.

Signature: Vicki Carder
Title: _____ Capital Project Date February 14, 2005
Subscribed and sworn to before me this 14th day of Feb
20 05
Notary Public: Anita Peterson
Date Commission Expires: Oct. 1, 2005

KCC Office Use Only
 Letter of Confidentiality Attached
If Denied, Yes Date: _____
 Wireline Log Received
 Geologist Report Received
 UIC Distribution



Side Two

Operator Name: OXY USA Inc. Lease Name: Kapp B Well #: 4
 Sec. 15 Twp. 32 S. R. 34W East West County: Seward

Instructions: Show important tops and base of formations penetrated. Detail all cores. Report all final copies of drill stems tests giving interval tested, time tool open and closed, flowing and shut-in pressures, whether shut-in pressure reached static level, hydrostatic pressures, bottom hole temperature, fluid recovery, and flow rates if gas to surface test, along with final chart(s). Attach extra sheet if more space is needed. Attach copy of all Electric Wireline Logs surveyed. Attach final geological well site report.

Drill Stem Tests Taken <i>(Attach Additional Sheets)</i>	<input type="checkbox"/> Yes <input checked="" type="checkbox"/> No	<input checked="" type="checkbox"/> Log	Formation (Top), Depth and Datum	<input type="checkbox"/> Sample	
Samples Sent to Geological Survey	<input checked="" type="checkbox"/> Yes <input type="checkbox"/> No	Name	Top	Datum	
Cores Taken	<input type="checkbox"/> Yes <input checked="" type="checkbox"/> No	Krider	2645	281	
Electric Log Run <i>(Submit Copy)</i>	<input checked="" type="checkbox"/> Yes <input type="checkbox"/> No	Winfield	2696	230	
List All E. Logs Run:	Neutron	Sonic	Council Grove	2934	-8
Induction	Microlog	Geological Report	Heebner	4184	-1258
			Toronto	4212	-1286
			Lansing	4320	-1394
			Cherokee	5205	-2279
			Atoka	5373	-2447
			Morrow	5645	-2719
			Chester	5907	-2981
			St. Genevieve	6173	-3247

CASING RECORD <input checked="" type="checkbox"/> New <input type="checkbox"/> Used							
Report all strings set-conductor, surface, intermediate, production, etc.							
Purpose of String	Size Hole Drilled	Size Casing Set(in. O.D.)	Weight Lbs./ft.	Setting Depth	Type of Cement	# Sacks Used	Type and Percent Additives
Conductor					C		
Surface	12 1/4	8 5/8	24	1750	C	570	35/65 poz + Additives
					C	195	Class C + Additives
Production					C		

ADDITIONAL CEMENTING / SQUEEZE RECORD

Purpose:	Depth Top Bottom	Type of Cement	#Sacks Used	Type and Percent Additives
<input type="checkbox"/> Perforate				
<input type="checkbox"/> Protect Casing	-			
<input type="checkbox"/> Plug Back TD				
<input type="checkbox"/> Plug off Zone	-			

Shots Per Foot	PERFORATION RECORD - Bridge Plugs Set/type Specify Footage of Each Interval Perforated	Acid, Fracture, Shot, Cement Squeeze Record (Amount and Kind of Material Used)	Depth
	100 sxs @ 3150'		
	50 sxs @ 1780'		
	40 sxs @ 590'		
	10 sxs @ surface		

TUBING RECORD	Size NA	Set At NA	Packer At	Liner Run <input type="checkbox"/> Yes <input checked="" type="checkbox"/> No
---------------	------------	--------------	-----------	--

Date of First, Resumed Production, SWD or Enhr. NA	Producing Method <input type="checkbox"/> Flowing <input type="checkbox"/> Pumping <input type="checkbox"/> Gas Lift <input checked="" type="checkbox"/> Other (Explain) P&A
---	---

Estimated Production Per 24 Hours	Oil BBLs NA	Gas Mcf NA	Water Bbls NA	Gas-Oil Ratio	Gravity
-----------------------------------	----------------	---------------	------------------	---------------	---------

Disposition of Gas: Vented Sold Used on Lease *(If vented, Submit ACO-18)*

METHOD OF COMPLETION: Open Hole Perf. Dually Comp. Commingled _____

Other (Specify) _____ P&A _____

Production Interval: _____

CONFIDENTIAL

Schlumberger

Cementing Service Report

Customer OXY USA, INC.						Job Number 2205547275						
Well Kapp 'B' 4			Location (legal) Sec 15-32S-34W			Schlumberger Location Perryton, TX			Job Start 2004-Oct-20			
Field		Formation Name/Type			Deviation		Bit Size 12.3 in	Well MD 1,800 ft	Well TVD 1,800 ft			
County Seward		State/Province Kansas			BHP psi	BHST 98 °F	BHCT 78 °F	Pore Press. Gradient psi/ft				
Well Master: 0630540049		API / UWI:			Casing/Liner							
Rig Name MURFIN 20		Drilled For Oil & Gas		Service Via Land		Depth, ft 1750	Size, in 8.63	Weight, lb/ft 24	Grade	Thread		
Offshore Zone		Well Class New		Well Type Development		Tubing/Drill Pipe						
Drilling Fluid Type		Max. Density lb/gal		Plastic Viscosity cp		Depth,	Size, in	Weight, lb/ft	Grade	Thread		
Service Line Cementing		Job Type Cem Surface Casing				Perforations/Open Hole						
Max. Allowed Tubing Pressure psi		Max. Allowed Ann. Pressure psi		Wellhead Connection 8 5/8" H&SM		Top, ft	Bottom, ft	spf	No. of Shots	Total Interval ft		
Service Instructions CEMENT 8 5/8" SURFACE CASING WITH: 570 SKS 35/65 POZ CLASS C + 6% D20 + 2% S001 + 0.5 PPS D29 195 SKS CLASS C + 2% S001 0.25 PPS D029 DISPLACE WITH FRESH WATER						Diameter in	Packer Depth ft	Open Hole Vol bbl	Packer Type	Annular Vol. bbl		
						Treat Down Casing	Displacement 108.6 bbl	Casing Vol. bbl	Packer Type	Annular Vol. bbl	Open Hole Vol bbl	
						Tubing Vol. bbl	Displacement 108.6 bbl	Casing Vol. bbl	Packer Type	Annular Vol. bbl	Open Hole Vol bbl	
						Tubing Vol. bbl	Displacement 108.6 bbl	Casing Vol. bbl	Packer Type	Annular Vol. bbl	Open Hole Vol bbl	
Casing/Tubing Secured <input checked="" type="checkbox"/>		1 Hole Volume Circulated prior to Cementing <input checked="" type="checkbox"/>				Casing Tools			Squeeze Job			
Lift Pressure: 450 psi		Pipe Rotated <input type="checkbox"/>				Pipe Reciprocated <input type="checkbox"/>				Shoe Type:		Squeeze Type
No. Centralizers:		Top Plugs: 1		Bottom Plugs:		Shoe Depth: ft		Tool Type:				
Cement Head Type: Single		Job Scheduled For: 2004-Oct-20 22:00				Arrived on Location: 2004-Oct-21 1:30		Leave Location:		Stage Tool Type:		Tool Depth: ft
Cement Head Type: Single		Job Scheduled For: 2004-Oct-20 22:00				Arrived on Location: 2004-Oct-21 1:30		Leave Location:		Stage Tool Depth: ft		Tail Pipe Size: in
Job Scheduled For: 2004-Oct-20 22:00		Arrived on Location: 2004-Oct-21 1:30				Leave Location:		Collar Type:		Tail Pipe Depth: ft		
Job Scheduled For: 2004-Oct-20 22:00		Arrived on Location: 2004-Oct-21 1:30				Leave Location:		Collar Depth: ft		Sqz Total Vol: bbl		
Date	Time	Treating PSI	Annulus PSI	CMT DENS	CMT STG VOL	CMT AVG RATE	NRD VOL	0	Message			
	24 hr clock	psi	psi	lb/gal	bbl	bbl/min	bbl	0				
2004-Oct-20	23:05	0.00	0.00	8.31	0.0	0.0	0.0	0				
2004-Oct-20	23:05								Start Job			
2004-Oct-20	23:05								Pressure Test Lines			
2004-Oct-20	23:05	0.00	0.00	8.31	0.0	0.0	0.0	0				
2004-Oct-20	23:05								Start Pumping Spacer			
2004-Oct-20	23:17	0.00	0.00	8.31	0.0	0.0	0.0	0				
2004-Oct-20	23:17	2810.66	0.00	8.31	0.4	1.1	0.0	0				
2004-Oct-20	23:18	2384.94	0.00	8.31	0.4	1.1	0.0	0				
2004-Oct-20	23:18	82.40	0.00	8.31	0.4	1.1	0.0	0				
2004-Oct-20	23:19	50.35	0.00	8.31	0.8	1.3	0.4	0				
2004-Oct-20	23:19	96.13	0.00	8.31	2.0	1.8	1.6	0				
2004-Oct-20	23:20	219.73	0.00	8.30	4.2	2.5	3.8	0				
2004-Oct-20	23:20	201.42	0.00	8.28	7.0	3.3	6.6	0				
2004-Oct-20	23:21	196.84	0.00	8.28	9.9	3.8	9.5	0				
2004-Oct-20	23:21	205.99	0.00	8.27	12.7	4.1	12.4	0				
2004-Oct-20	23:21								End Spacer			
2004-Oct-20	23:21	228.88	0.00	9.64	15.2	4.3	14.9					
2004-Oct-20	23:22								Start Mixing Lead Slurry			
2004-Oct-20	23:22	228.88	0.00	9.75	15.4	4.3	15.1					
2004-Oct-20	23:22								Total, Vol = 15.58 bbl			
2004-Oct-20	23:22	228.88	0.00	9.86	15.6	4.3	15.3					
2004-Oct-20	23:22	233.46	0.00	10.80	2.9	4.5	2.8					

RECEIVED
KANSAS CORPORATION COMMISSION
FEB 15 2005
CONSERVATION DIVISION
WICHITA, KS

KCC

FEB 15 2005

CONFIDENTIAL

Well		Field			Service Date		Customer		Job Number
Kapp 'B' #4					04294-Oct-20		OXY USA, INC.		2205547275
Date	Time	Treating PSI	Annulus PSI	CMT DENS	CMT STG VOL	CMT AVG RATE	NRD VOL	0	Message
	24 hr clock	psi	psi	lb/gal	bbl	bbl/min	bbl	0	
2004-Oct-20	23:23	260.92	0.00	12.11	5.7	4.6	5.6	0	
2004-Oct-20	23:23	279.23	0.00	12.52	8.6	4.7	8.5	0	
2004-Oct-20	23:24	247.19	0.00	12.05	11.4	4.8	11.3	0	
2004-Oct-20	23:24	238.04	0.00	12.40	14.3	4.9	14.2	0	
2004-Oct-20	23:25	233.46	0.00	12.34	17.1	4.9	17.0	0	
2004-Oct-20	23:25	228.88	0.00	12.14	20.0	5.0	19.8	0	
2004-Oct-20	23:26	233.46	0.00	12.50	22.9	5.0	22.7	0	
2004-Oct-20	23:26	219.73	0.00	12.34	25.7	5.1	25.5	0	
2004-Oct-20	23:27	196.84	0.00	12.15	28.6	5.1	28.3	0	
2004-Oct-20	23:27	201.42	0.00	12.21	31.4	5.2	31.2	0	
2004-Oct-20	23:28	196.84	0.00	12.23	34.3	5.2	34.1	0	
2004-Oct-20	23:28	196.84	0.00	12.26	37.2	5.2	36.9	0	
2004-Oct-20	23:29	187.68	0.00	12.13	40.0	5.2	39.7	0	
2004-Oct-20	23:29	201.42	0.00	12.62	42.9	5.3	42.6	0	
2004-Oct-20	23:30	201.42	0.00	12.67	45.7	5.3	45.4	0	
2004-Oct-20	23:30	205.99	0.00	12.44	48.6	5.3	48.2	0	
2004-Oct-20	23:31	196.84	0.00	12.35	51.4	5.3	51.1	0	
2004-Oct-20	23:31	183.10	0.00	12.04	54.4	5.3	54.1	0	
2004-Oct-20	23:32	205.99	0.00	12.69	57.2	5.3	56.9	0	
2004-Oct-20	23:32	196.84	0.00	12.19	60.1	5.4	59.7	0	
2004-Oct-20	23:33	192.26	0.00	12.44	63.0	5.4	62.5	0	
2004-Oct-20	23:33	196.84	0.00	12.70	65.8	5.4	65.4	0	
2004-Oct-20	23:34	196.84	0.00	12.58	68.7	5.4	68.2	0	
2004-Oct-20	23:34	178.53	0.00	11.85	71.5	5.4	71.1	0	
2004-Oct-20	23:35	183.10	0.00	12.13	74.4	5.4	73.9	0	
2004-Oct-20	23:35	183.10	0.00	12.31	77.3	5.4	76.7	0	
2004-Oct-20	23:36	196.84	0.00	12.70	80.1	5.4	79.6	0	
2004-Oct-20	23:36	192.26	0.00	12.37	83.0	5.4	82.4	0	
2004-Oct-20	23:37	192.26	0.00	12.19	85.8	5.4	85.3	0	
2004-Oct-20	23:37	187.68	0.00	12.25	88.7	5.4	88.1	0	
2004-Oct-20	23:38	183.10	0.00	12.30	91.5	5.5	90.9	0	
2004-Oct-20	23:38	187.68	0.00	12.37	94.4	5.5	93.8	0	
2004-Oct-20	23:39	196.84	0.00	12.32	97.3	5.5	96.6	0	
2004-Oct-20	23:39	187.68	0.00	12.27	100.1	5.5	99.5	0	
2004-Oct-20	23:40	183.10	0.00	12.20	103.0	5.5	102.4	0	
2004-Oct-20	23:40	187.68	0.00	12.14	105.8	5.5	105.2	0	
2004-Oct-20	23:41	178.53	0.00	11.89	108.7	5.5	108.0	0	
2004-Oct-20	23:41	201.42	0.00	12.74	111.5	5.5	110.9	0	
2004-Oct-20	23:42	187.68	0.00	12.27	114.4	5.5	113.7	0	
2004-Oct-20	23:42	201.42	0.00	12.86	117.3	5.5	116.6	0	
2004-Oct-20	23:43	205.99	0.00	12.83	120.2	5.5	119.5	0	
2004-Oct-20	23:43	201.42	0.00	12.53	123.1	5.5	122.3	0	
2004-Oct-20	23:44	196.84	0.00	12.55	125.9	5.5	125.2	0	
2004-Oct-20	23:44	192.26	0.00	12.46	128.8	5.5	128.0	0	
2004-Oct-20	23:45	192.26	0.00	12.61	131.6	5.5	130.9	0	
2004-Oct-20	23:45	196.84	0.00	12.52	134.5	5.5	133.7	0	
2004-Oct-20	23:46	183.10	0.00	12.09	137.4	5.5	136.6	0	
2004-Oct-20	23:46	183.10	0.00	12.18	140.2	5.5	139.4	0	
2004-Oct-20	23:47	183.10	0.00	12.43	143.1	5.5	142.2	0	
2004-Oct-20	23:47	192.26	0.00	12.46	145.9	5.5	145.1	0	
2004-Oct-20	23:48	187.68	0.00	12.16	148.8	5.5	147.9	0	
2004-Oct-20	23:48	187.68	0.00	12.24	151.6	5.5	150.8	0	
2004-Oct-20	23:49	178.53	0.00	12.26	154.5	5.5	153.6	0	
2004-Oct-20	23:49	187.68	0.00	12.36	157.4	5.6	156.4	0	

RECEIVED
KANSAS CORPORATION COMMISSION
FEB 15 2005
CONSERVATION DIVISION
WICHITA, KS

Well		Field			Service Date		Customer		Job Number
Kapp 'B' #4					04294-Oct-20		OXY USA, INC.		2205647275
Date	Time	Treating PSI	Annulus PSI	CMT DENS	CMT STG VOL	CMT AVG RATE	NRD VOL	0	Message
	24 hr clock	psi	psi	lb/gal	bbl	bbl/min	bbl	0	
2004-Oct-20	23:50	192.26	0.00	12.26	160.2	5.6	159.3	0	
2004-Oct-20	23:50	183.10	0.00	12.18	163.1	5.6	162.1	0	
2004-Oct-20	23:51	178.53	0.00	12.21	165.9	5.6	164.9	0	
2004-Oct-20	23:51	183.10	0.00	12.15	168.8	5.6	167.7	0	
2004-Oct-20	23:52	187.68	0.00	12.14	171.6	5.6	170.6	0	
2004-Oct-20	23:52	178.53	0.00	11.76	174.5	5.6	173.3	0	
2004-Oct-20	23:53	187.68	0.00	12.36	177.4	5.6	176.1	0	
2004-Oct-20	23:53	187.68	0.00	12.46	180.2	5.6	178.9	0	
2004-Oct-20	23:54	192.26	0.00	12.41	183.1	5.6	181.7	0	
2004-Oct-20	23:54	196.84	0.00	12.38	186.0	5.6	184.6	0	
2004-Oct-20	23:55	192.26	0.00	12.37	188.9	5.6	187.5	0	
2004-Oct-20	23:55	183.10	0.00	12.21	191.7	5.6	190.3	0	
2004-Oct-20	23:56	196.84	0.00	12.52	194.6	5.6	193.1	0	
2004-Oct-20	23:56	196.84	0.00	12.27	197.5	5.6	196.0	0	
2004-Oct-20	23:57	187.68	0.00	12.05	200.3	5.6	198.8	0	
2004-Oct-20	23:57	192.26	0.00	12.44	203.2	5.6	201.7	0	
2004-Oct-20	23:58	205.99	0.00	12.63	206.0	5.6	204.5	0	
2004-Oct-20	23:58	215.15	0.00	12.67	208.9	5.6	207.4	0	
2004-Oct-20	23:59	201.42	0.00	12.56	211.7	5.6	210.2	0	
2004-Oct-20	23:59	192.26	0.00	11.95	214.6	5.6	213.0	0	
2004-Oct-20	23:59								End Lead Slurry
2004-Oct-20	23:59	187.68	0.00	11.87	215.0	5.6	213.4	0	
2004-Oct-20	23:59								Start Mixing Tail Slurry
2004-Oct-20	23:59	187.68	0.00	11.84	215.1	5.6	213.5	0	
2004-Oct-20	23:59								Reset Total, Vol = 216.43 bbl
2004-Oct-20	23:59	119.02	0.00	11.80	216.4	5.6	214.8	0	
2004-Oct-21	0:00	119.02	0.00	12.08	0.6	5.6	0.6	0	
2004-Oct-21	0:00	137.33	0.00	13.10	2.5	5.6	2.6	0	
2004-Oct-21	0:01	105.29	0.00	14.49	3.9	5.5	4.0	0	
2004-Oct-21	0:01	283.81	0.00	14.45	6.1	5.5	6.1	0	
2004-Oct-21	0:02	187.68	0.00	14.78	8.3	5.5	8.4	0	
2004-Oct-21	0:02	187.68	0.00	15.28	10.3	5.5	10.4	0	
2004-Oct-21	0:03	292.97	0.00	15.00	12.8	5.5	12.9	0	
2004-Oct-21	0:03	265.50	0.00	14.35	15.7	5.5	15.7	0	
2004-Oct-21	0:04	164.79	0.00	14.35	17.7	5.5	17.8	0	
2004-Oct-21	0:04	183.10	0.00	15.10	19.7	5.4	19.8	0	
2004-Oct-21	0:05	183.10	0.00	15.23	21.6	5.4	21.7	0	
2004-Oct-21	0:05	183.10	0.00	15.26	23.6	5.4	23.7	0	
2004-Oct-21	0:05	183.10	0.00	15.26	23.7	5.4	23.8	0	
2004-Oct-21	0:05								Reset Total, Vol = 23.71 bbl
2004-Oct-21	0:06	178.53	0.00	15.06	1.8	5.4	1.8	0	
2004-Oct-21	0:06	164.79	0.00	14.78	3.8	5.4	3.8	0	
2004-Oct-21	0:07	178.53	0.00	15.09	29.1	5.4	5.8	0	
2004-Oct-21	0:07	173.95	0.00	15.05	31.1	5.4	31.8	0	
2004-Oct-21	0:08	178.53	0.00	15.17	33.0	5.3	33.7	0	
2004-Oct-21	0:08	178.53	0.00	15.34	35.0	5.3	35.6	0	
2004-Oct-21	0:09	164.79	0.00	14.95	36.9	5.3	37.6	0	
2004-Oct-21	0:09	164.79	0.00	14.99	38.9	5.3	39.6	0	
2004-Oct-21	0:10	173.95	0.00	15.32	40.8	5.3	41.5	0	
2004-Oct-21	0:10	173.95	0.00	15.32	42.8	5.3	43.5	0	
2004-Oct-21	0:11	146.48	0.00	14.36	44.8	5.3	45.4	0	
2004-Oct-21	0:11	41.20	0.00	14.23	45.7	5.2	46.4	0	
2004-Oct-21	0:11	41.20	0.00	14.33	45.7	5.2	46.4	0	
2004-Oct-21	0:11								End Tail Slurry

RECEIVED
KANSAS CORPORATION COMMISSION
FEB 15 2005
CONSERVATION DIVISION
WICHITA, KS

Well		Field			Service Date		Customer		Job Number
Kapp 'B' #4					04294-Oct-20		OXY USA, INC.		2205547275
Date	Time	Treating PSI	Annulus PSI	CMT DENS	CMT STG VOL	CMT AVG RATE	NRD VOL	0	Message
	24 hr clock	psi	psi	lb/gal	bbl	bbl/min	bbl	0	
2004-Oct-21	0:11								Drop Top Plug
2004-Oct-21	0:11	36.62	0.00	14.44	45.7	5.2	46.4	0	
2004-Oct-21	0:12	32.04	0.00	14.45	45.7	5.2	46.4	0	
2004-Oct-21	0:12	32.04	0.00	14.45	45.7	5.2	46.4	0	
2004-Oct-21	0:12								Start Displacement
2004-Oct-21	0:12								Reset Total, Vol = 45.71 bbl
2004-Oct-21	0:12	27.47	0.00	14.46	45.7	5.2	46.4	0	
2004-Oct-21	0:12	27.47	0.00	14.46	0.0	5.2	0.0	0	
2004-Oct-21	0:13	45.78	0.00	12.77	0.4	5.2	0.4	0	
2004-Oct-21	0:13	91.55	0.00	10.11	1.9	5.2	1.9	0	
2004-Oct-21	0:14	128.17	0.00	8.70	4.7	5.2	4.6	0	
2004-Oct-21	0:14	119.02	0.00	8.38	7.7	5.2	7.6	0	
2004-Oct-21	0:15	141.91	0.00	8.28	10.6	5.2	10.6	0	
2004-Oct-21	0:15	155.64	0.00	8.28	13.6	5.2	13.5	0	
2004-Oct-21	0:16	164.79	0.00	8.28	16.5	5.2	16.5	0	
2004-Oct-21	0:16	164.79	0.00	8.28	19.5	5.2	19.5	0	
2004-Oct-21	0:17	178.53	0.00	8.25	22.5	5.2	22.6	0	
2004-Oct-21	0:17	178.53	0.00	8.29	25.4	5.2	25.6	0	
2004-Oct-21	0:18	187.68	0.00	8.29	28.4	5.3	28.6	0	
2004-Oct-21	0:18	187.68	0.00	8.29	31.3	5.3	31.5	0	
2004-Oct-21	0:19	201.42	0.00	8.29	34.3	5.3	33.3	0	
2004-Oct-21	0:19	215.15	0.00	8.29	37.2	5.3	34.8	0	
2004-Oct-21	0:20	224.30	0.00	8.29	40.2	5.3	37.8	0	
2004-Oct-21	0:20	256.35	0.00	8.29	43.2	5.3	43.3	0	
2004-Oct-21	0:21	251.77	0.00	8.29	46.1	5.3	46.2	0	
2004-Oct-21	0:21	270.08	0.00	8.29	49.1	5.3	49.2	0	
2004-Oct-21	0:22	270.08	0.00	8.29	52.0	5.3	52.2	0	
2004-Oct-21	0:22	302.12	0.00	8.29	55.0	5.3	55.1	0	
2004-Oct-21	0:23	306.70	0.00	8.30	57.9	5.3	58.1	0	
2004-Oct-21	0:23	311.28	0.00	8.29	61.0	5.3	61.2	0	
2004-Oct-21	0:24	357.05	0.00	8.29	63.9	5.3	64.1	0	
2004-Oct-21	0:24	343.32	0.00	8.29	66.9	5.3	67.0	0	
2004-Oct-21	0:25	379.94	0.00	8.29	69.9	5.3	70.0	0	
2004-Oct-21	0:25	411.99	0.00	8.29	72.8	5.3	72.9	0	
2004-Oct-21	0:26	425.72	0.00	8.30	75.8	5.3	75.9	0	
2004-Oct-21	0:26	416.56	0.00	8.30	78.7	5.3	78.8	0	
2004-Oct-21	0:27	425.72	0.00	8.29	81.7	5.3	81.7	0	
2004-Oct-21	0:27	457.76	0.00	8.29	84.6	5.3	84.7	0	
2004-Oct-21	0:28	462.34	0.00	8.29	87.6	5.4	87.6	0	
2004-Oct-21	0:28	503.54	0.00	8.29	90.5	5.4	90.5	0	
2004-Oct-21	0:29	503.54	0.00	8.30	93.4	5.4	93.3	0	
2004-Oct-21	0:29	512.69	0.00	8.29	96.3	5.4	96.2	0	
2004-Oct-21	0:30	448.61	0.00	8.29	97.7	5.3	97.7	0	
2004-Oct-21	0:30	448.61	0.00	8.30	96.6	5.3	98.7	0	
2004-Oct-21	0:31	453.18	0.00	8.30	97.6	5.3	99.7	0	
2004-Oct-21	0:31	448.61	0.00	8.29	98.6	5.3	98.7	0	
2004-Oct-21	0:32	453.18	0.00	8.29	99.6	5.2	99.7	0	
2004-Oct-21	0:32	471.49	0.00	8.29	100.7	5.2	100.8	0	
2004-Oct-21	0:33	476.07	0.00	8.30	101.7	5.2	101.8	0	
2004-Oct-21	0:33	485.23	0.00	8.29	102.7	5.2	102.8	0	
2004-Oct-21	0:34	494.38	0.00	8.29	103.7	5.2	103.8	0	
2004-Oct-21	0:34	498.96	0.00	8.30	104.7	5.1	104.8	0	
2004-Oct-21	0:35	508.12	0.00	8.29	105.6	5.1	105.8	0	
2004-Oct-21	0:35	508.12	0.00	8.29	106.6	5.1	106.8	0	

RECEIVED
KANSAS CORPORATION COMMISSION
FEB 15 2005
CONSERVATION DIVISION
WICHITA, KS

Well		Field			Service Date		Customer		Job Number
Kapp 'B' #4					04294-Oct-20		OXY USA, INC.		2205547275
Date	Time	Treating PSI	Annulus PSI	CMT DENS	CMT STG VOL	CMT AVG RATE	NRD VOL	0	Message
	24 hr clock	psi	psi	lb/gal	bbbl	bbbl/min	bbbl	0	
2004-Oct-21	0:36	627.13	0.00	8.29	107.6	5.1	107.8	0	
2004-Oct-21	0:36								Start Displacement
2004-Oct-21	0:36	1057.43	0.00	8.30	107.8	5.1	108.0	0	
2004-Oct-21	0:36	1062.01	0.00	8.30	107.8	5.1	108.0	0	
2004-Oct-21	0:36								End Displacement
2004-Oct-21	0:36	1057.43	0.00	8.30	107.8	5.1	108.0	0	
2004-Oct-21	0:36								Bump Top Plug
2004-Oct-21	0:36	1057.43	0.00	8.30	107.8	5.1	108.0	0	
2004-Oct-21	0:37	672.91	0.00	8.30	107.8	5.1	108.0	0	
2004-Oct-21	0:37	27.47	0.00	8.30	107.8	5.1	108.0	0	
2004-Oct-21	0:37								End Job

Post Job Summary

Average Pump Rates, bpm				Volume of Fluid Injected, bbl			
Slurry	N2	Mud	Maximum Rate	Total Slurry	Mud	Spacer	N2
5.6	0	0	6	267.5	0	10	
Treating Pressure Summary, psi				Breakdown Fluid			
Maximum	Final	Average	Bump Plug to Breakdown	Volume		Density	
1200		300	1057	bbl		lb/gal	
Avg. N2 Percent	Designed Slurry Volume		Displacement	Mix Water Temp	<input checked="" type="checkbox"/> Cement Circulated to Surface?	Volume	58 bbl
%	267.5 bbl		108.6 bbl	"F	<input type="checkbox"/> Washed Thru Perfs	To	ft
Customer or Authorized Representative			Schlumberger Supervisor		<input type="checkbox"/> Circulation Lost		
Willimon, Wes			Gonzales, Paul		<input checked="" type="checkbox"/> Job Completed		

RECEIVED
KANSAS CORPORATION COMMISSION

FEB 15 2005

CONSERVATION DIVISION
WICHITA, KS

CONFIDENTIAL

Schlumberger

Service Order

2004-Oct-30

Customer OXY USA, INC.		Person Taking Call Ousley, John		Dowell Location Perryton, TX		OrderDate 2004-Oct-27		Job Number 2205547279				
Well Name and Number Kapp 'B' 4			Legal Location Sec 15-32S-34W		Field		County Seward		State/Province Kansas			
Well Master: 0630540049			API / UWI:									
Rig Name MURFIN 20			Well Age New		Sales Engineer Cambren, Charles			Job Type Plug & Abandon				
Time Well Ready: 10/30/2004 6:00 AM		Deviation °		Bit Size 7.88 in		Well MD 6,400 ft		Well TVD 6,400 ft		BHP psi	BHST 144 °F	BHCT 116 °F
Treat Down Drill Pipe		Packer Type	Packer Depth ft		WellHead Connection 4 1/2 X-HOLE		HHP on Location		Max Allowed Pressure 2000		Max Allowed AnnPressure	
Casing					Services Instructions: PLUG TO ABANDON WITH 225 SX 40/60 POZ H : 100 SX @ 3150' 50 SX @ 1780' 40 SX @ 590' 10 SX @ SURFACE 25 SX @ RAT & MOUSE							
Depth, ft	Size, in	Weight, lb/ft		Grade								Thread
1800	8.63	24			8RD							
Tubing					Extra Equipment: 1 CemCAT 1 PUMP 1 ABT							
Depth,	Size, in	Weight, lb/ft		Grade								Thread
3150	4.5	16.6			XH							
Perforated Intervals					<div style="text-align: center;"> RECEIVED KANSAS CORPORATION COMMISSION FEB 15 2005 CONSERVATION DIVISION WICHITA, KS </div>							
Top, ft	Bottom, ft	spf	No. of Shots	Total Interval ft								
				Diameter in								
Expected On Location: 10/30/2004 6:00 AM Ready To Pump:												

Contact	Voice	Mobile	FAX	Notes
Greg Fillpot		1 620 353 8669		OFFICE 1 620 629 4247
MURFIN RIG 20		1 785 694 3635		
RODNEY-MURFIN 20		1 785 694 3669		

Notes:

KCC**FEB 15 2005****CONFIDENTIAL****Directions:**

PERRYTON TEXAS, 55 MI NORTH HWY 83 TO LIBERAL KS, CONTINUE 11 MI NORTH HWY 83 TO SANTANA CUTOFF, T/L, FOLLOW BLACKTOP 2 MI NORTH TO CO RD 12, T/L, 9 MI WEST AND NORTH ON CO RD 12 TO CO RD 16, T/R, 1 MI EAST ON CO RD 16, T/R, 1/2 MI SOUTH, T/R, WEST INTO

Other Notes:

FOLLOW ALL CONVOY POLICIES AND QHSE STANDARDS, REMEMBER THAT YOUR FAMILY WAITS FOR YOU COME BACK SAFE!!!

Comments:

Fluid Systems:

CEMENT			
225 SX 40/60 POZ H + 6%D20 + 0.2%D46			
<i>Density:</i>	13.2	lb/gal	<i>Thickening Time:</i>
<i>Yield:</i>	1.69	ft ³ /sk	
<i>H2O Mix:</i>	8.78	gal/sk	
<i>H2O:</i>	1975.5	gal	<i>Eq. Sack Weight:</i> 88 lb
			<i>Total Blend:</i> 225 sacks
Dowell Code	Conc/ Amount	Total Quantity	
D046	0.176 lbs/sk	39.6	
D020	5.28 lbs/sk	1188	
D132	31.6 lbs/sk	7110	
CLASS H	56.4 lbs/sk	12690	



Cementing Service Report

Customer OXY USA, INC.					Job Number 2205547279				
Well Kapp 'B' 4			Location (Dept) Sec 15-32S-34W			Schlumberger Location Perryton, TX			Job Start 2004-Oct-30
State		Formation Name/Type		Deviation		SPR Size 7.86 in	Well MD 6,400 ft		Well TVD 6,400 ft
County Seward		State/Province Kansas		SPR psi	MNST 144 °F	MNST 116 °F		Pore Press. Gradient psi/ft	
Well Master: 0630540049		API / UW:		Casing/Liner					
Rig Name MURFIN 20	Drilled For Oil & Gas		Service Via		Depth, ft 1800	Size, in 8.63	Weight, lb/ft 24	Grade	Thread BRD
Offshore Zone	Well Class New		Well Type Development		Tubing/Drill Pipe				
Drilling Fluid Type		Max. Density lb/gal	Plastic Vt: cp		Depth, 3150	Size, in 4.5	Weight, lb/ft 16.6	Grade	Thread XH
Service Line Cementing		Job Type Plug & Abandon			Perforations/Open Hole				
Max. Allowed Tubing Pressure 2000 psi	Max. Allowed Ann. Pressure psi	Wellhead Connection 4 1/2 X-HOLE			Top, ft	Bottom, ft	sp/	No. of Shots	Total Interval ft
Service Instructions PLUG TO ABANDON WITH 225 SX 4060 POZ H : 100 SX @ 3150' 50 SX @ 1780' 40 SX @ 590' 10 SX @ SURFACE 25 SX @ RAT & MOUSE					Diameter in		Packer Depth ft	Open Hole Vol bbf	
					Well Down Drill Pipe	Displacement 60 bbl	Packer Type	Packer Depth ft	
					Tubing Vol. 60 bbl	Casing Vol. bbf	Annular Vol. bbf	Open Hole Vol bbf	
					Casing/Tubing Secured <input checked="" type="checkbox"/>	1 Hole Volume Circulated prior to Cementing <input checked="" type="checkbox"/>	Casing Tools		
LR Pressure: psi		Pipe Rotated <input type="checkbox"/>	Pipe Encased <input type="checkbox"/>	Shot Type:	Squeeze Type	Shot Depth:	Test Type:		
No. Controllers: Top Plugs:		Bottom Plugs:		Stage Test Type:	Test Depth:	Stage Test Depth:	ft		
Cement Head Type:		Casing Type:	ft	Tail Pipe Size:	in	Casing Depth:	ft		
Job Scheduled For: 10/30/2004 6:00		Arrival on Location: 2004-Oct-30 5:00		Leave Location: 2004-Oct-30 13:00		Coffor Type:	ft	Tail Pipe Depth:	ft
Coffor Depth:	ft	Sgt Total Vol:	bbf						
Date	Time	Treating PSI	Annulus PSI	CMT DENS	CMT STG VOL	CMT AVG RATE	NRD VOL	o	Message
	24 hr clock	psi	psi	lb/gal	bbf	bbf/min	bbf	o	
2004-Oct-30	8:06	0.00	0.00	8.33	0.0	0.0	0.0	0	
2004-Oct-30	8:06	0.00	0.00	8.33	0.0	0.0	0.0	0	
2004-Oct-30	8:06								
2004-Oct-30	8:06	0.00	-4.58	8.33	0.0	0.0	0.0	0	Pressure Test Lines
2004-Oct-30	8:06								
2004-Oct-30	8:06	0.00	-4.58	8.33	0.0	0.0	0.0	0	Start Pumping Spacer
2004-Oct-30	8:06	0.00	-4.58	8.33	0.0	0.0	0.0	0	
2004-Oct-30	8:06	0.00	-4.58	8.33	0.0	0.0	0.0	0	
2004-Oct-30	8:06	0.00	-4.58	8.33	0.0	0.0	0.0	0	
2004-Oct-30	8:09	0.00	0.00	8.33	0.0	0.0	0.0	0	
2004-Oct-30	8:09	0.00	-4.58	8.33	0.0	0.0	0.0	0	
2004-Oct-30	8:10	0.00	0.00	8.33	0.0	0.0	0.0	0	
2004-Oct-30	8:10	4.58	0.00	8.33	0.0	0.0	0.0	0	
2004-Oct-30	8:11	0.00	0.00	8.33	0.0	0.0	0.0	0	
2004-Oct-30	8:11	0.00	0.00	8.33	0.0	0.0	0.0	0	
2004-Oct-30	8:12	4.58	0.00	8.33	0.0	0.0	0.0	0	
2004-Oct-30	8:12	0.00	-4.58	8.33	0.0	0.0	0.0	0	
2004-Oct-30	8:13	4.58	-4.58	8.32	0.0	0.0	0.0	0	
2004-Oct-30	8:13	9.16	-4.58	8.32	0.0	0.0	0.0	0	
2004-Oct-30	8:14	2037.04	-4.58	8.32	0.3	0.7	0.0	0	
2004-Oct-30	8:14	279.23	0.00	8.32	0.3	0.7	0.0	0	
2004-Oct-30	8:15	0.00	0.00	8.32	0.3	0.7	0.0	0	
2004-Oct-30	8:15	32.04	-4.58	8.32	0.3	0.7	0.0	0	
2004-Oct-30	8:16	27.47	-4.58	8.31	0.3	0.7	0.0	0	
2004-Oct-30	8:16	32.04	-4.58	8.31	0.3	0.7	0.0	0	

Oct 30, 2004 WRB3 10.411-SR

RECEIVED
 KANSAS CORPORATION COMMISSION
FEB 15 2005
 CONSERVATION DIVISION
 WICHITA, KS

Well		Field		Service Date			Customer		Job Number
Kapp T# #4				04304-Oct-30			OXY USA, INC.		2205547279
Date	Time	Treating PSI	Annulus PSI	CMT DEMS	CMT STD VOL	CMT AVG RATE	NRD VOL	0	Message
	24 hr clock	psi	psi	in/gal	bbbl	bbbl/min	bbbl	0	
2004-Oct-30	8:17	36.62	-4.58	8.30	0.3	0.7	0.0	0	
2004-Oct-30	8:17	41.20	-4.58	8.29	0.3	0.7	0.0	0	
2004-Oct-30	8:18	41.20	-4.58	8.29	0.3	0.7	0.0	0	
2004-Oct-30	8:18	41.20	-4.58	8.30	0.3	0.7	0.0	0	
2004-Oct-30	8:19	41.20	-4.58	8.30	0.5	0.6	0.0	0	
2004-Oct-30	8:19	45.78	-4.58	9.02	0.7	0.5	0.0	0	
2004-Oct-30	8:20	45.78	-4.58	11.10	0.9	0.5	0.0	0	
2004-Oct-30	8:20	45.78	0.00	12.36	1.2	0.5	0.0	0	
2004-Oct-30	8:21	50.35	-4.58	13.20	1.4	0.5	0.0	0	
2004-Oct-30	8:21	146.48	-4.58	13.37	2.4	0.7	0.0	0	
2004-Oct-30	8:22	178.53	0.00	13.14	4.6	1.2	0.0	0	
2004-Oct-30	8:22	169.37	0.00	12.93	6.7	1.5	0.0	0	
2004-Oct-30	8:22	169.37	0.00	13.37	8.4	1.7	0.0	0	
2004-Oct-30	8:22								Start Cement Slurry
2004-Oct-30	8:23	169.37	-4.58	13.37	8.4	1.7	0.0	0	
2004-Oct-30	8:23								End Spacer
2004-Oct-30	8:23	169.37	-4.58	13.31	8.9	1.8	0.0	0	
2004-Oct-30	8:23	155.64	0.00	13.30	11.0	2.0	0.0	0	
2004-Oct-30	8:24	151.06	-4.58	13.27	15.9	2.2	0.0	0	
2004-Oct-30	8:24	146.48	0.00	13.22	18.1	2.4	0.0	0	
2004-Oct-30	8:25	137.33	-4.58	13.26	20.2	2.5	0.0	0	
2004-Oct-30	8:25	114.44	-4.58	13.31	22.4	2.7	0.0	0	
2004-Oct-30	8:26	86.97	-4.58	13.23	24.6	2.8	0.0	0	
2004-Oct-30	8:26	82.40	0.00	13.35	26.8	2.9	0.0	0	
2004-Oct-30	8:27	86.97	-4.58	13.32	29.0	3.0	0.0	0	
2004-Oct-30	8:27								End Cement Slurry
2004-Oct-30	8:27	86.97	-4.58	13.31	30.4	3.0	0.0	0	
2004-Oct-30	8:27	86.97	-4.58	13.29	30.5	3.0	0.0	0	
2004-Oct-30	8:27								Start Displacement
2004-Oct-30	8:27								Reset Total, Vol = 30.66 bbl
2004-Oct-30	8:27	86.97	-4.58	13.17	30.7	3.0	0.0	0	
2004-Oct-30	8:27	77.82	-4.58	10.21	0.5	3.0	0.0	0	
2004-Oct-30	8:28	45.78	-4.58	8.51	2.7	3.1	0.0	0	
2004-Oct-30	8:28	45.78	0.00	8.42	4.9	3.2	0.0	0	
2004-Oct-30	8:29	-13.73	0.00	8.55	6.4	3.2	0.0	0	
2004-Oct-30	8:29	0.00	-4.58	8.55	6.4	3.1	0.0	0	
2004-Oct-30	8:30	-4.58	-4.58	8.55	6.4	3.1	0.0	0	
2004-Oct-30	8:30	-4.58	-4.58	8.54	6.4	3.1	0.0	0	
2004-Oct-30	8:31	-9.16	0.00	8.53	6.4	3.1	0.0	0	
2004-Oct-30	8:31	0.00	-4.58	8.52	6.4	3.1	0.0	0	
2004-Oct-30	8:32	9.16	0.00	8.53	6.4	3.1	0.0	0	
2004-Oct-30	8:32	18.31	0.00	8.35	6.4	3.1	0.0	0	
2004-Oct-30	8:33	13.73	-4.58	8.43	6.4	3.1	0.0	0	
2004-Oct-30	8:33	50.35	0.00	8.43	7.6	3.1	0.0	0	
2004-Oct-30	8:34	50.35	-4.58	8.43	9.3	3.1	0.0	0	
2004-Oct-30	8:34	50.35	-4.58	8.43	10.9	3.1	0.0	0	
2004-Oct-30	8:35	50.35	0.00	8.43	12.5	3.1	0.0	0	
2004-Oct-30	8:35	13.73	-4.58	8.42	12.8	3.1	0.0	0	
2004-Oct-30	8:35								End Displacement
2004-Oct-30	8:35	18.31	-4.58	8.42	12.8	3.1	0.0	0	
2004-Oct-30	8:35								End Job
2004-Oct-30	8:35								Reset Total, Vol = 12.81 bbl
2004-Oct-30	8:35	13.73	0.00	8.42	12.8	3.1	0.0	0	
2004-Oct-30	8:35								Stopped Acquisition

RECEIVED
 KANSAS CORPORATION COMMISSION
 FEB 15 2005
 CONSERVATION DIVISION
 WICHITA, KS

Well		Field			Service Date		Customer		Job Number
Kapp 'B' #4					04304-Oct-30		OXY USA, INC.		2205547279
Date	Time	Treating PSI	Annulus PSI	CMT DENS	CMT STG VOL	CMT AVG RATE	NRD VOL	D	Message
	24 hr clock	psi	psi	lb/gal	bbbl	bbbl/min	bbbl	0	
2004-Oct-30	9:20								Started Acquisition
2004-Oct-30	9:20	-4.58	-4.58	8.36	0.0	0.0	0.0	0	
2004-Oct-30	9:20	-4.58	0.00	8.34	0.0	0.0	0.0	0	
2004-Oct-30	9:20								Start Pumping Spacer
2004-Oct-30	9:20	-4.58	-4.58	8.34	0.0	0.0	0.0	0	
2004-Oct-30	9:21	-9.16	0.00	8.34	0.0	0.0	0.0	0	
2004-Oct-30	9:21	-9.16	0.00	8.34	0.0	0.0	0.0	0	
2004-Oct-30	9:22	-4.58	-4.58	8.34	0.0	0.0	0.0	0	
2004-Oct-30	9:22	-4.58	0.00	8.34	0.0	0.0	0.0	0	
2004-Oct-30	9:23	-9.16	0.00	8.34	0.0	0.0	0.0	0	
2004-Oct-30	9:23	32.04	0.00	8.40	0.0	0.0	0.0	0	
2004-Oct-30	9:24	32.04	-4.58	8.37	0.0	0.0	0.0	0	
2004-Oct-30	9:24	27.47	-4.58	8.36	0.0	0.0	0.0	0	
2004-Oct-30	9:25	41.20	-4.58	8.34	0.0	0.0	0.0	0	
2004-Oct-30	9:25	192.26	-4.58	8.34	1.0	2.2	0.0	0	
2004-Oct-30	9:26	292.97	-4.58	8.33	2.9	3.1	0.0	0	
2004-Oct-30	9:26	311.28	-4.58	8.34	5.0	3.5	0.0	0	
2004-Oct-30	9:26								End Spacer
2004-Oct-30	9:26	311.28	-4.58	8.36	5.5	3.5	0.0	0	
2004-Oct-30	9:26								Start Cement Slurry
2004-Oct-30	9:26	315.86	-4.58	8.36	5.6	3.5	0.0	0	
2004-Oct-30	9:27								Reset Total, Vol = 6.23 bbl
2004-Oct-30	9:27	320.43	0.00	8.57	6.2	3.6	0.0	0	
2004-Oct-30	9:27	315.86	-4.58	9.16	0.8	3.6	0.0	0	
2004-Oct-30	9:27	315.86	0.00	10.40	2.9	3.8	0.0	0	
2004-Oct-30	9:28	292.97	-4.58	11.18	5.1	3.8	0.0	0	
2004-Oct-30	9:28	205.50	-4.58	12.70	7.2	3.9	0.0	0	
2004-Oct-30	9:29	242.61	0.00	13.14	9.4	3.9	0.0	0	
2004-Oct-30	9:29	196.84	0.00	13.26	11.5	4.0	0.0	0	
2004-Oct-30	9:30	189.37	0.00	13.43	13.7	4.0	0.0	0	
2004-Oct-30	9:30	151.05	0.00	13.43	14.6	4.0	0.0	0	
2004-Oct-30	9:30								Start Displacement
2004-Oct-30	9:30								End Cement Slurry
2004-Oct-30	9:30	146.48	-4.58	13.43	14.8	4.0	0.0	0	
2004-Oct-30	9:30								Reset Total, Vol = 14.90 bbl
2004-Oct-30	9:30	146.48	-4.58	13.43	14.9	4.0	0.0	0	
2004-Oct-30	9:30	119.02	-4.58	13.24	0.8	4.0	0.0	0	
2004-Oct-30	9:31	64.09	-4.58	8.62	3.1	4.1	0.0	0	
2004-Oct-30	9:31	41.20	-4.58	8.53	5.2	4.1	0.0	0	
2004-Oct-30	9:32	41.20	-4.58	8.42	7.4	4.1	0.0	0	
2004-Oct-30	9:32	50.35	-4.58	8.26	9.6	4.1	0.0	0	
2004-Oct-30	9:33	41.20	-4.58	8.36	11.7	4.1	0.0	0	
2004-Oct-30	9:33	36.62	-4.58	8.36	13.9	4.1	0.0	0	
2004-Oct-30	9:34	59.51	-4.58	8.34	16.1	4.2	0.0	0	
2004-Oct-30	9:34	41.20	-4.58	8.34	18.1	4.2	0.0	0	
2004-Oct-30	9:35	-9.16	-4.58	8.34	18.2	4.1	0.0	0	
2004-Oct-30	9:35	-4.58	-4.58	8.34	18.2	4.1	0.0	0	
2004-Oct-30	9:36	-9.16	0.00	8.34	18.2	4.1	0.0	0	
2004-Oct-30	9:36	-9.16	-4.58	8.34	18.2	4.1	0.0	0	
2004-Oct-30	9:37	-9.16	0.00	8.34	18.2	4.1	0.0	0	
2004-Oct-30	9:37	-9.16	-4.58	8.34	18.2	4.1	0.0	0	
2004-Oct-30	9:38	-9.16	-4.58	8.34	18.2	4.1	0.0	0	
2004-Oct-30	9:38	-9.16	-4.58	8.34	18.2	4.1	0.0	0	
2004-Oct-30	9:39	-9.16	-4.58	8.34	18.2	4.1	0.0	0	

RECEIVED
 KANSAS CORPORATION COMMISSION
 FEB 15 2005
 CONSERVATION DIVISION
 WICHITA, KS

Well		Field			Service Date		Customer		Job Number
Kapp 'B' #4					04304-Oct-30		OXY USA, INC.		2205547279
Date	Time	Treating PSI	Annulus PSI	CMT DENS	CMT STG VOL	CMT AVG RATE	NRD VOL	g	Message
	24 hr clock	psi	psi	lb/gal	bbt	bbb/min	bbt	g	
2004-Oct-30	9:39	-9.16	-4.58	8.34	18.2	4.1	0.0	0	
2004-Oct-30	9:40	-9.16	0.00	8.34	18.2	4.1	0.0	0	
2004-Oct-30	9:40	-9.16	-4.58	8.34	18.2	4.1	0.0	0	
2004-Oct-30	9:41	-9.16	0.00	8.34	18.2	4.1	0.0	0	
2004-Oct-30	9:41	-9.16	-4.58	8.33	18.2	4.1	0.0	0	
2004-Oct-30	9:42	-9.16	-4.58	8.33	18.2	4.1	0.0	0	
2004-Oct-30	9:42	-9.16	-4.58	8.32	18.2	4.1	0.0	0	
2004-Oct-30	9:43	-13.73	-4.58	8.32	18.2	4.1	0.0	0	
2004-Oct-30	9:43	-9.16	-4.58	8.32	18.2	4.1	0.0	0	
2004-Oct-30	9:44	-9.16	0.00	8.32	18.2	4.1	0.0	0	
2004-Oct-30	9:44	-9.16	-4.58	8.32	18.2	4.1	0.0	0	
2004-Oct-30	9:45	-9.16	-4.58	8.32	18.2	4.1	0.0	0	
2004-Oct-30	9:45								End Displacement
2004-Oct-30	9:52								Reset Total, Vol = 18.18 bbl
2004-Oct-30	10:16	-9.16	-4.58	8.32	0.0	4.1	0.0	0	
2004-Oct-30	10:16	-9.16	0.00	8.32	0.0	4.1	0.0	0	
2004-Oct-30	10:18								Start Pumping Spacer
2004-Oct-30	10:18	-13.73	-4.58	8.32	0.0	4.1	0.0	0	
2004-Oct-30	10:16								Start Cement Slurry
2004-Oct-30	10:16	-9.16	0.00	8.32	0.0	4.1	0.0	0	
2004-Oct-30	10:17	-9.16	0.00	8.32	0.0	4.1	0.0	0	
2004-Oct-30	10:17	-9.16	-4.58	8.32	0.0	4.1	0.0	0	
2004-Oct-30	10:18	-13.73	0.00	8.32	0.0	4.1	0.0	0	
2004-Oct-30	10:18	-13.73	0.00	8.32	0.0	4.1	0.0	0	
2004-Oct-30	10:19	-13.73	-4.58	8.32	0.0	4.1	0.0	0	
2004-Oct-30	10:19	27.47	-4.58	8.32	0.3	4.0	0.0	0	
2004-Oct-30	10:20	27.47	-4.58	8.29	1.7	4.0	0.0	0	
2004-Oct-30	10:20	45.78	0.00	9.46	3.2	3.9	0.0	0	
2004-Oct-30	10:21	59.51	-4.58	11.85	5.1	3.9	0.0	0	
2004-Oct-30	10:21	73.24	-4.58	12.81	7.2	3.9	0.0	0	
2004-Oct-30	10:22	68.66	-4.58	13.29	9.3	4.0	0.0	0	
2004-Oct-30	10:22	68.66	-4.58	13.46	11.5	4.0	0.0	0	
2004-Oct-30	10:23	68.66	-4.58	13.46	13.7	4.0	0.0	0	
2004-Oct-30	10:23	54.93	-4.58	7.57	15.9	4.0	0.0	0	
2004-Oct-30	10:24	45.78	-4.58	8.28	18.0	4.0	0.0	0	
2004-Oct-30	10:24	-18.31	-4.58	8.58	19.1	4.0	0.0	0	
2004-Oct-30	10:25	-13.73	0.00	8.58	19.1	4.0	0.0	0	
2004-Oct-30	10:25	-9.16	-4.58	8.57	19.1	4.0	0.0	0	
2004-Oct-30	10:26	-13.73	-4.58	8.57	19.1	4.0	0.0	0	
2004-Oct-30	10:26	-9.16	0.00	8.58	19.1	4.0	0.0	0	
2004-Oct-30	10:27	-13.73	0.00	8.56	19.1	4.0	0.0	0	
2004-Oct-30	10:27	-13.73	-4.58	8.55	19.1	4.0	0.0	0	
2004-Oct-30	10:28	-13.73	-4.58	8.54	19.1	4.0	0.0	0	
2004-Oct-30	10:28	-9.16	-4.58	8.58	19.1	4.0	0.0	0	
2004-Oct-30	10:28								Start Displacement
2004-Oct-30	10:28	-13.73	0.00	8.58	19.1	4.0	0.0	0	
2004-Oct-30	10:28								End Displacement
2004-Oct-30	10:28	-9.16	-4.58	8.58	19.1	4.0	0.0	0	
2004-Oct-30	10:28								End Cement Slurry
2004-Oct-30	10:28								Reset Total, Vol = 19.08 bbl
2004-Oct-30	11:11	-13.73	0.00	8.32	0.0	3.7	0.0	0	
2004-Oct-30	11:11	-13.73	-4.58	8.32	0.0	3.7	0.0	0	
2004-Oct-30	11:12	-13.73	0.00	8.32	0.0	3.7	0.0	0	
2004-Oct-30	11:12	-9.16	-4.58	8.32	0.0	3.7	0.0	0	

RECEIVED
 KANSAS CORPORATION COMMISSION
 FEB 15 2005
 CONSERVATION DIVISION
 WICHITA, KS

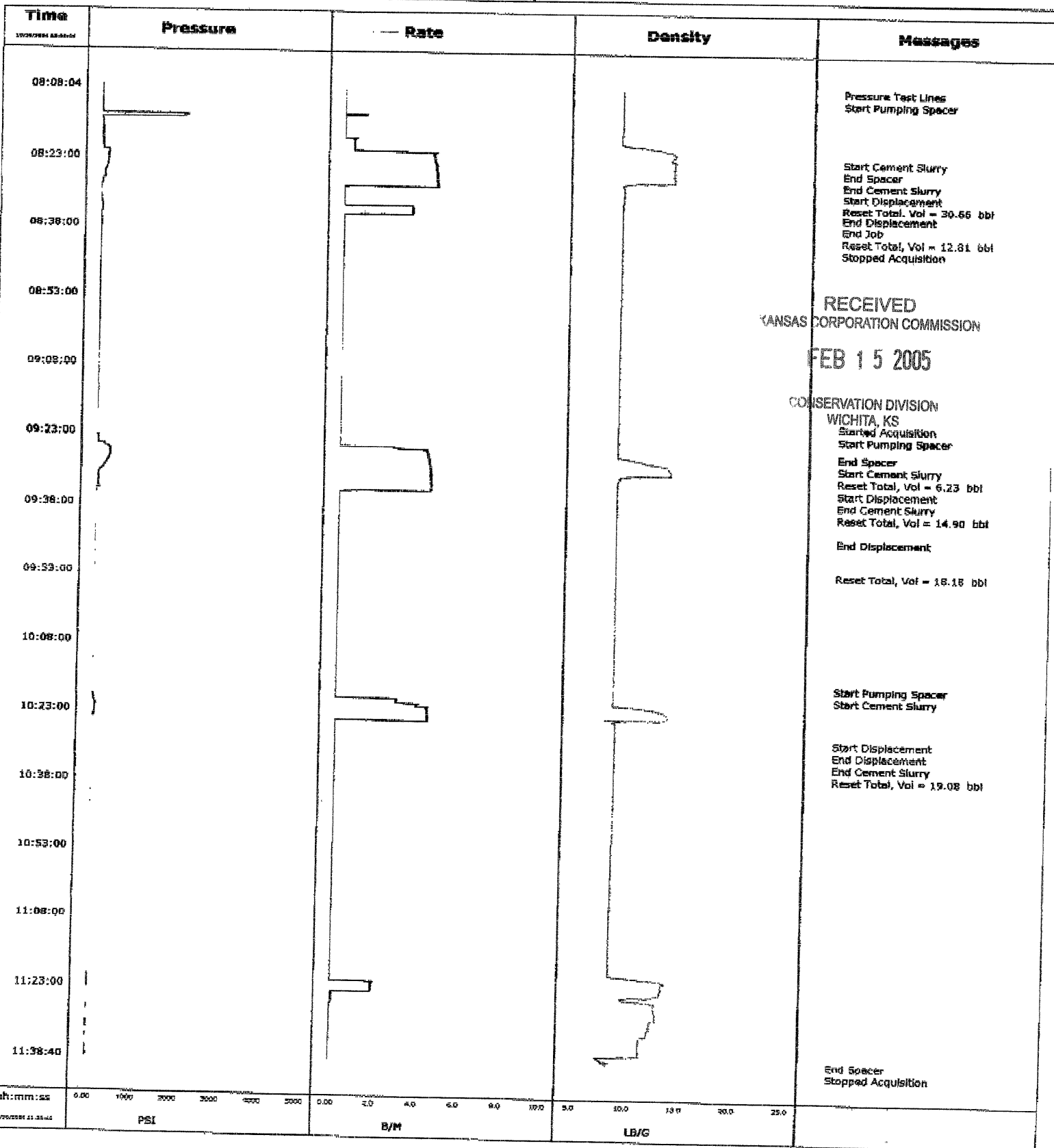
Well		Field		Service Date			Customer		Job Number	
Kapp 'B' #4				04304-Oct-30			OXY USA, INC.		2205647279	
Date	Time	Treating PSI	Annulus PSI	CMT DENS	CMT STG VOL	CMT AVG RATE	NRD VOL	0	Message	
	24 hr clock	psi	psi	lb/gal	bbbl	bbbl/min	bbbl	0		
2004-Oct-30	11:13	-13.73	0.00	8.32	0.0	3.7	0.0	0		
2004-Oct-30	11:13	-13.73	-4.58	8.32	0.0	3.7	0.0	0		
2004-Oct-30	11:14	-9.16	0.00	8.32	0.0	3.7	0.0	0		
2004-Oct-30	11:14	-9.16	-4.58	8.32	0.0	3.7	0.0	0		
2004-Oct-30	11:15	-9.16	-4.58	8.32	0.0	3.7	0.0	0		
2004-Oct-30	11:15	-13.73	-4.58	8.32	0.0	3.7	0.0	0		
2004-Oct-30	11:16	-13.73	0.00	8.32	0.0	3.7	0.0	0		
2004-Oct-30	11:16	-9.16	0.00	8.32	0.0	3.7	0.0	0		
2004-Oct-30	11:17	-13.73	-4.58	8.32	0.0	3.7	0.0	0		
2004-Oct-30	11:17	-9.16	-4.58	8.35	0.0	3.7	0.0	0		
2004-Oct-30	11:18	-9.16	0.00	8.34	0.0	3.7	0.0	0		
2004-Oct-30	11:18	-9.16	-4.58	8.34	0.0	3.7	0.0	0		
2004-Oct-30	11:19	-9.16	0.00	8.35	0.0	3.7	0.0	0		
2004-Oct-30	11:19	-9.16	0.00	10.62	0.0	3.7	0.0	0		
2004-Oct-30	11:20	-9.16	0.00	12.71	0.0	3.7	0.0	0		
2004-Oct-30	11:20	9.16	0.00	13.66	0.0	3.7	0.0	0		
2004-Oct-30	11:21	13.73	0.00	13.37	0.1	3.7	0.0	0		
2004-Oct-30	11:21	9.16	-4.58	13.37	1.0	3.7	0.0	0		
2004-Oct-30	11:22	13.73	0.00	13.37	2.0	3.6	0.0	0		
2004-Oct-30	11:22	13.73	0.00	13.30	3.0	3.6	0.0	0		
2004-Oct-30	11:23	13.73	0.00	13.25	4.0	3.6	0.0	0		
2004-Oct-30	11:23	-9.16	0.00	12.34	4.4	3.5	0.0	0		
2004-Oct-30	11:24	-9.16	-4.58	9.63	4.4	3.4	0.0	0		
2004-Oct-30	11:24	-4.58	-4.58	11.37	4.4	3.4	0.0	0		
2004-Oct-30	11:25	-4.58	0.00	12.63	4.5	3.3	0.0	0	RECEIVED	
2004-Oct-30	11:25	-4.58	0.00	12.72	4.5	3.2	0.0	0	KANSAS CORPORATION COMMISSION	
2004-Oct-30	11:26	-9.16	0.00	12.76	4.6	3.2	0.0	0	FEB 15 2005	
2004-Oct-30	11:26	-9.16	0.00	12.78	4.6	3.2	0.0	0		
2004-Oct-30	11:27	-4.58	-4.58	12.80	4.6	3.2	0.0	0		
2004-Oct-30	11:27	13.73	-4.58	12.84	4.6	3.2	0.0	0	CONSERVATION DIVISION	
2004-Oct-30	11:28	9.16	-4.58	12.84	4.6	3.2	0.0	0	WICHITA, KS	
2004-Oct-30	11:28	-4.58	0.00	12.85	4.6	3.2	0.0	0		
2004-Oct-30	11:29	-4.58	0.00	12.36	4.6	3.2	0.0	0		
2004-Oct-30	11:29	-4.58	0.00	12.34	4.6	3.2	0.0	0		
2004-Oct-30	11:30	-9.16	0.00	12.34	4.6	3.2	0.0	0		
2004-Oct-30	11:30	-9.16	0.00	12.34	4.6	3.2	0.0	0		
2004-Oct-30	11:31	13.73	0.00	12.12	4.6	3.2	0.0	0		
2004-Oct-30	11:31	9.16	-4.58	12.11	4.6	3.2	0.0	0		
2004-Oct-30	11:32	13.73	-4.58	12.05	4.6	3.2	0.0	0		
2004-Oct-30	11:32	-9.16	-4.58	11.43	4.6	3.2	0.0	0		
2004-Oct-30	11:33	-4.58	-4.58	11.40	4.6	3.2	0.0	0		
2004-Oct-30	11:33	-9.16	-4.58	11.39	4.6	3.2	0.0	0		
2004-Oct-30	11:34	-4.58	0.00	11.39	4.6	3.2	0.0	0		
2004-Oct-30	11:34	-9.16	-4.58	11.39	4.6	3.2	0.0	0		
2004-Oct-30	11:35	-9.16	-4.58	11.39	4.6	3.2	0.0	0		
2004-Oct-30	11:35	-13.73	-4.58	11.39	4.6	3.2	0.0	0		
2004-Oct-30	11:36	-13.73	0.00	11.39	4.6	3.2	0.0	0		
2004-Oct-30	11:36	13.73	0.00	11.34	4.6	3.2	0.0	0		
2004-Oct-30	11:37	-9.16	0.00	7.40	4.6	3.2	0.0	0		
2004-Oct-30	11:37	-13.73	-4.58	7.70	4.6	3.2	0.0	0		
2004-Oct-30	11:38	0.00	-4.58	8.41	4.6	3.2	0.0	0		
2004-Oct-30	11:38	22.89	0.00	8.35	4.6	3.2	0.0	0		
2004-Oct-30	11:39								End Spacer	



Cementing Job Report

CemCAT v1.1

Well	KAPP B 4	Client	OXY USA
Field		SIR No.	2205547279
Engineer	PAUL GONZALES	Job Type	PLUG
Country	United States	Job Date	10-30-2004



Well		Field		Service Date		Customer		Job Number	
Kapp 1B #4				04304-Oct-30		OKY USA, INC.		2205547279	
Date	Time	Treating PSI	Annulus PSI	CMT DENS	CMT STG VOL	CMT AVG RATE	MRD VOL	0	Message
	24 hr clock	psi	psi	lb/gal	bbt	bbt/min	bbt	0	
Post Job Summary									
Average Pump Rates, bpm					Volume of Fluid Injected, bbl				
Sherry	Hz	Hz	Hz	Maximum Rate	Total Sherry	Shad	Spacer	Hz	
4	0	0	4		67.7	30	10		
Treating Pressure Summary, psi					Breakdown Fluid				
Maximum	Final	Average	Bump Plug to	Breakdown	Volume:	Density			
500		50			bbt	lb/gal			
Arg. Mt Percent	Designed Sherry Volume	Displacement	Mix Water Temp		<input type="checkbox"/> Cement Observed to Surface?	Volume			
5	67.7 bbl	60 bbl	"F		<input type="checkbox"/> Washed Three Ports To	ft			
Customer or Authorized Representative			Schlumberger Supervisor			<input type="checkbox"/> Circulation Lost		<input checked="" type="checkbox"/> Job Completed	
Fillpot, Greg			Gonzales, Paul						

RECEIVED
KANSAS CORPORATION COMMISSION

FEB 15 2005

CONSERVATION DIVISION
WICHITA, KS