

Notice: Fill out COMPLETELY and return to Conservation Division at the address below within 60 days from plugging date.

KANSAS CORPORATION COMMISSION OIL & GAS CONSERVATION DIVISION WELL PLUGGING RECORD K.A.R. 82-3-117

RECEIVED KANSAS CORPORATION COMMISSION

JUN 05 2007 type or Print on this Form Form must be Signed All blanks must be Filled CONSERVATION DIVISION WICHITA, KS

Form CP-4 December 2003

Lease Operator: Intermountain Refining Co., Inc.

Address: PO Box 35, Farmington, NM 87499

Phone: (505) 326-2668 Operator License #: 32356

Type of Well: Gas Docket #: (Oil, Gas D&A, SWD, ENHR, Water Supply Well, Cathodic, Other) (If SWD or ENHR)

The plugging proposal was approved on: 05/21/2007 (Date)

by: Ken Jelik (observed plugging operation) (KCC District Agent's Name)

Is ACO-1 filed? Yes No If not, is well log attached? Yes No

Producing Formation(s): List All (if needed attach another sheet)

Chase-Krider Depth to Top: 2742 Bottom: 2762 T.D. 2809

Depth to Top: Bottom: T.D.

Depth to Top: Bottom: T.D.

API Number: 15-171200690000

Lease Name: Mildred Strode

Well Number: #1

Spot Location (QQQQ): CTR - NE/4 - -

1320 Feet from North / South Section Line

1320 Feet from East / West Section Line

Sec. 28 Twp. 18 S. R. 31 East West

County: Scott

Date Well Completed: 11/1975

Plugging Commenced: 05/21/2007

Plugging Completed: 05/21/2007

Show depth and thickness of all water, oil and gas formations.

Table with columns: Oil, Gas or Water Records (Formation, Content) and Casing Record (Surface Conductor & Production) (From, To, Size, Put In, Pulled Out). Rows include Chase-Krider Gas formation and casing data.

Describe in detail the manner in which the well is plugged, indicating where the mud fluid was placed and the method or methods used in introducing it into the hole.

Set Packer 2,680', pressured up 1,250psi, spotted 25 sacks cement on bottom, pull packer. Ran bond log 1,620' to 340', top of cement at approx 925'. Perforate at 540'. Ran packer to 1,508', pressure up to 1000psi, held. Run tubing to 2,030', circulate 80 sacks cement to 600'. Pull packer to 495', inject 20 sacks cement through perfs at 300psi. Pull packer out of well, inject 150 sacks down casing at 300psi, circulate to surface out bradenhead. All cement 60/40 6%.

Name of Plugging Contractor: Swift Services, Inc. License #: 32382

Address: N Hwy 283, Ness City, KS 67560

Name of Party Responsible for Plugging Fees: Intermountain Refining Co., Inc.

State of New Mexico County, San Juan, ss.

Rick L. Hurt, Secretary/Treasurer (Employee of Operator) or (Operator) on above-described well, being first duly sworn on oath, says: That I have knowledge of the facts statements, and matters herein contained, and the log of the above-described well is as filed, and the same are true and correct, so help me God.

(Signature) [Handwritten Signature]

(Address) PO Box 35, Farmington, NM 87499

SUBSCRIBED and SWORN TO before me this 30 day of May, 2007

[Handwritten Signature] My Commission Expires: 07/06/2010 Notary Public

Mail to: KCC - Conservation Division, 130 S. Market - Room 2078, Wichita, Kansas 67202

Handwritten initials 'RST' in the bottom right corner.

JOB LOG

SWIFT Services, Inc.

DATE 5-21-07 PAGE NO. 7

CUSTOMER Intermountain Resources WELL NO. # 1 LEASE MELBORN STROBE JOB TYPE TOOLS - P/A TICKET NO. 12179-12180

CHART NO.	TIME	RATE (BPM)	VOLUME (BBL)(GAL)	PUMPS		PRESSURE (PSI)		DESCRIPTION OF OPERATION AND MATERIALS
				T	C	TUBING	CASING	
	0745							ON LOCATION
								2 3/8 x 4 1/2 4 1/2 = 2808 8 5/8 = 220'
								RECEIVED KANSAS CORPORATION COMMISSION JUN 05 2007 CONSERVATION DIVISION WICHITA, KS
	0900							START AD-1 TRIPDOWN PER IN WELL
	1110							SET PER = 2680'
	1115		1 1/2	✓		1250		PSE UP - HOLDING
	1130		7 1/2					RELEASE PER - SPOT 25 SKS CNT ON BOTTOM PULL PER OUT WELL
								LOG WELL TOC = 925' ± PERFORME = 540'
	1505							RUN AD-1 PER TO 1508' CS6 LEAK = 1650' (APPROX)
				✓		1000		ZNS RATE - CANNOT PUMP AUTO - HOLDING
	1510							RELEASE PSE
								RUN TRIPDOWN TO 2030' (BELOW CS622 HOLE)
	1535		23	✓				CALCULATE CMT TO 600' 80 SKS CNT
	1710	3	6	✓		300		PULL PER TO 495' - ZNS RATE
								CALCULATE TO GET OUT - OUT BRANCH HEAD
								PULL PER OUT WELL - REG CMT 4 1/2 CS6
	1745	3	45	✓		300		PUMP 150 SKS CNT DOWN 4 1/2" CS6 - CALCULATE CMT TO SURFACE OUT BRANCH HEAD
								WASH TRUCK
	1900							JOB COMPLETE
								THANK YOU WALJE, DUSTY, RYAN
								Stationed as Ken Jelik

DUAL RECEIVER
CEMENT BOND
LOG

Company INTERMOUNTAIN REFINING
Well MILDRED STRODE #1
Field
County SCOTT
State KANSAS

Company INTERMOUNTAIN REFINING CO, INC
Well MILDRED STRODE #1
Field
County SCOTT
State KANSAS

Location: SEC: 28 TWP: 18S RGE: 31W
Other Services

Permanent Datum GROUND LEVEL Elevation 2499
Log Measured From KELLY BUSHING 5' AGL
Drilling Measured From KELLY BUSHING
Elevation
K.B. 2949
D.F.
G.L. 2944

ite	ONE	MAY 21, 2007			
in Number	ONE	2808			
iph Driller		1620			
iph Logger		1620			
Bottom Logged Interval		350			
ip Log Interval		350			
id Level		OIL/WATER			
pe Fluid					
nsity / Viscosity					
x: Recorded / Temp					
imated Cement Top					
ne Well Ready					
ne Logger on Bottom					
ipment Number		PT-85			
ation		HAYS			
orded By		JEREMY SCHNEIDER			
ressed By		MR. WAYNE WILSON			
Borehole Record		Tubing Record			
Run Number	Bit	From	To	Size	Weight
ONE	12.25	00	220		
TWO	7.875	220	2808		
Tubing Record		Tubing Record			
ing Record	Size	Wd/Ft	Top	Bottom	
ace String	8.5/8	28#	00	220	
duction String	4 1/2	9.5#	00	2808	

<< Fold Here >>

All interpretations are opinions based on inferences from electrical or other measurements and we cannot and do not guarantee the accuracy or correctness of any interpretation, and we shall not, except in the case of gross or willful negligence on our part, be liable or responsible for any loss, costs, damages, or expenses incurred or sustained by anyone resulting from any interpretation made by any of our officers, agents or employees. These interpretations are also subject to our general terms and conditions set out in our current Price Schedule.

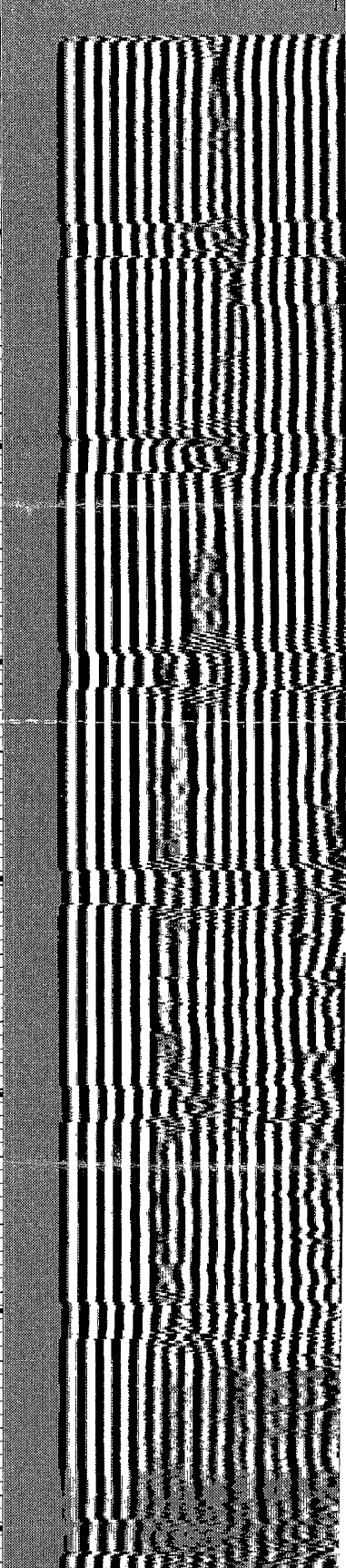
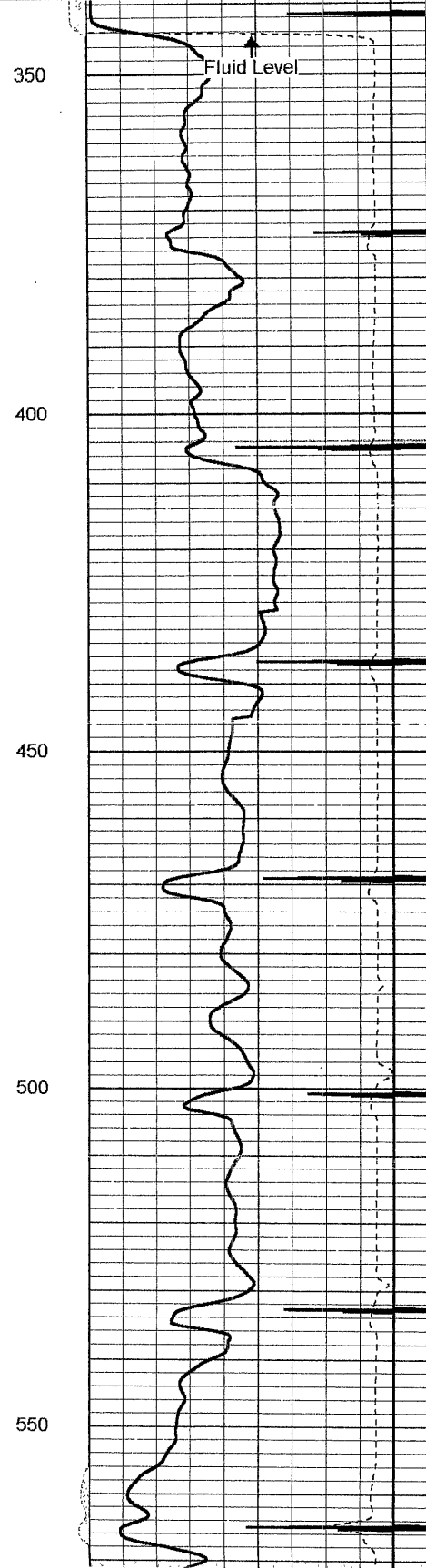
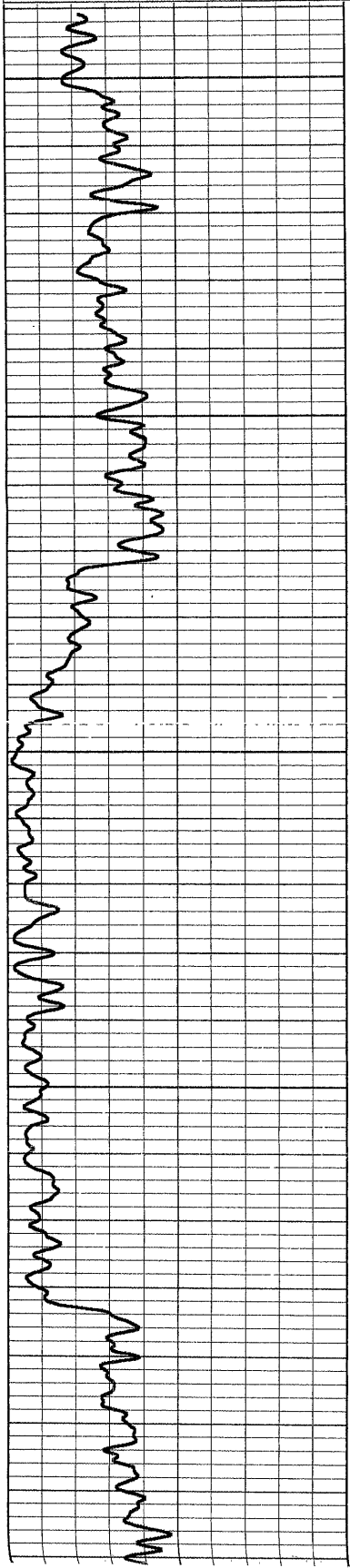
Comments

RECEIVED
KANSAS CORPORATION COMMISSION
JUN 05 2007
CONSERVATION DIVISION
WICHITA, KS

MAIN PASS

Database File: 05210785.db
Dataset Pathname: pass2
Presentation Format: cbl3-5
Dataset Creation: Mon May 21 13:04:32 2007 by Log Warrior Version 6.6

0	3' Amplitude (mV)	100
620	TT3 (usec)	220

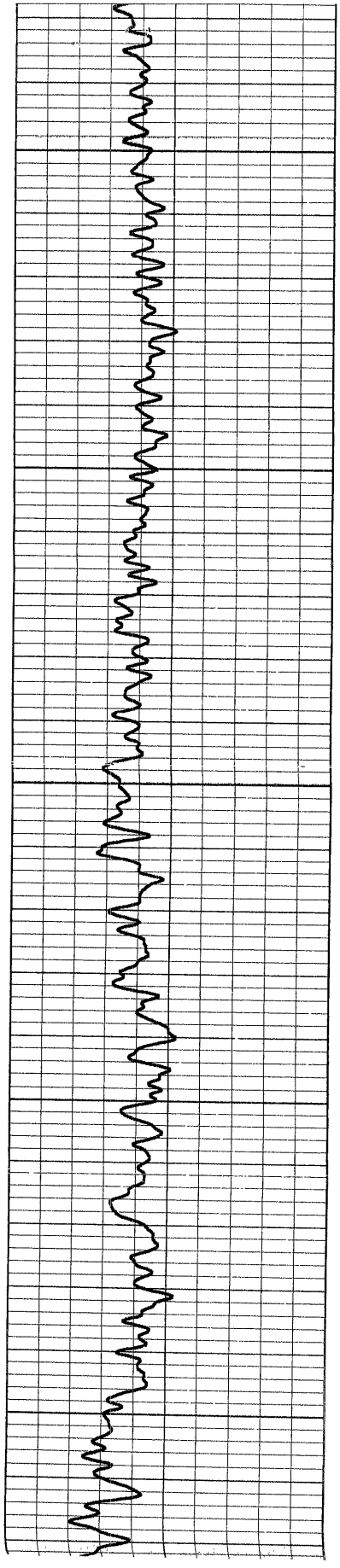
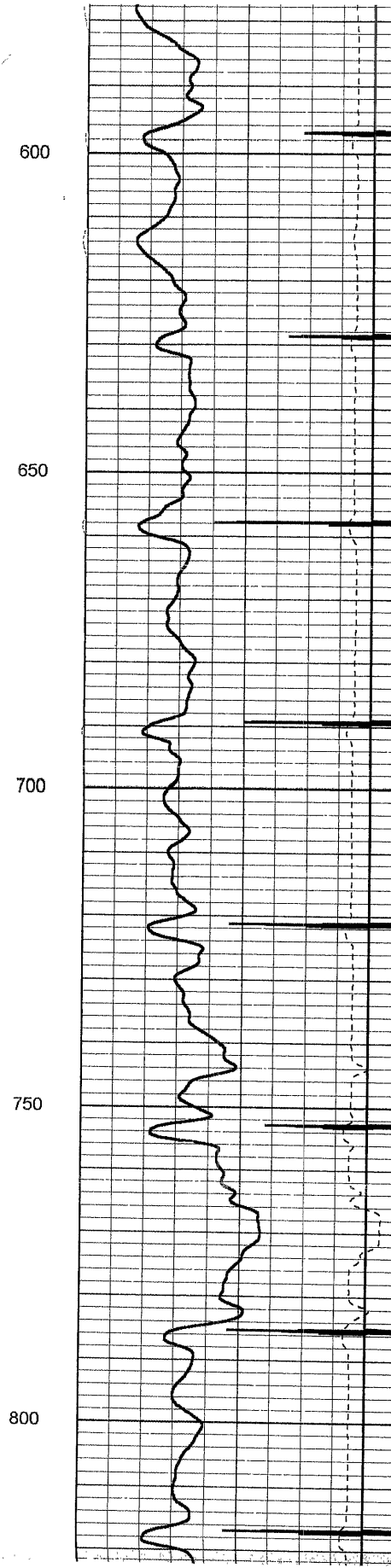
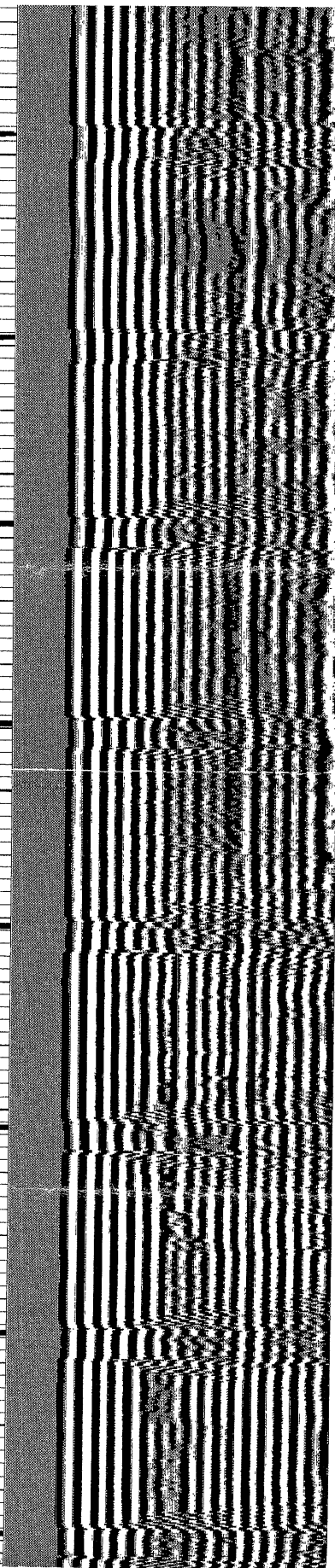


RECEIVED
KANSAS CORPORATION COMMISSION
JUN 05 2007
CONSERVATION DIVISION
WICHITA, KS

RECEIVED
KANSAS CORPORATION COMMISSION

JUN 05 2007

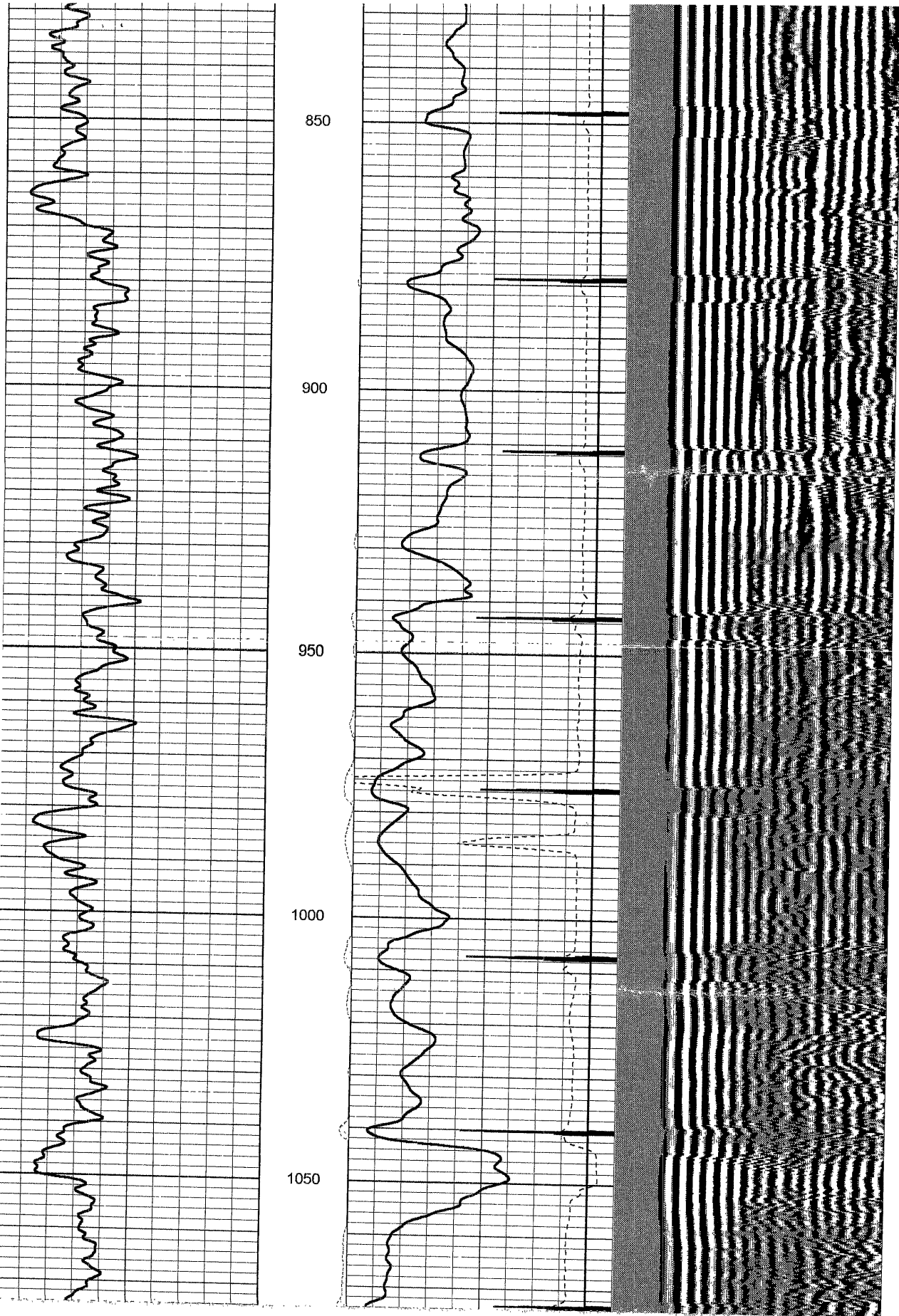
CONSERVATION DIVISION
WICHITA, KS



RECEIVED
KANSAS CORPORATION COMMISSION

JUN 05 2007

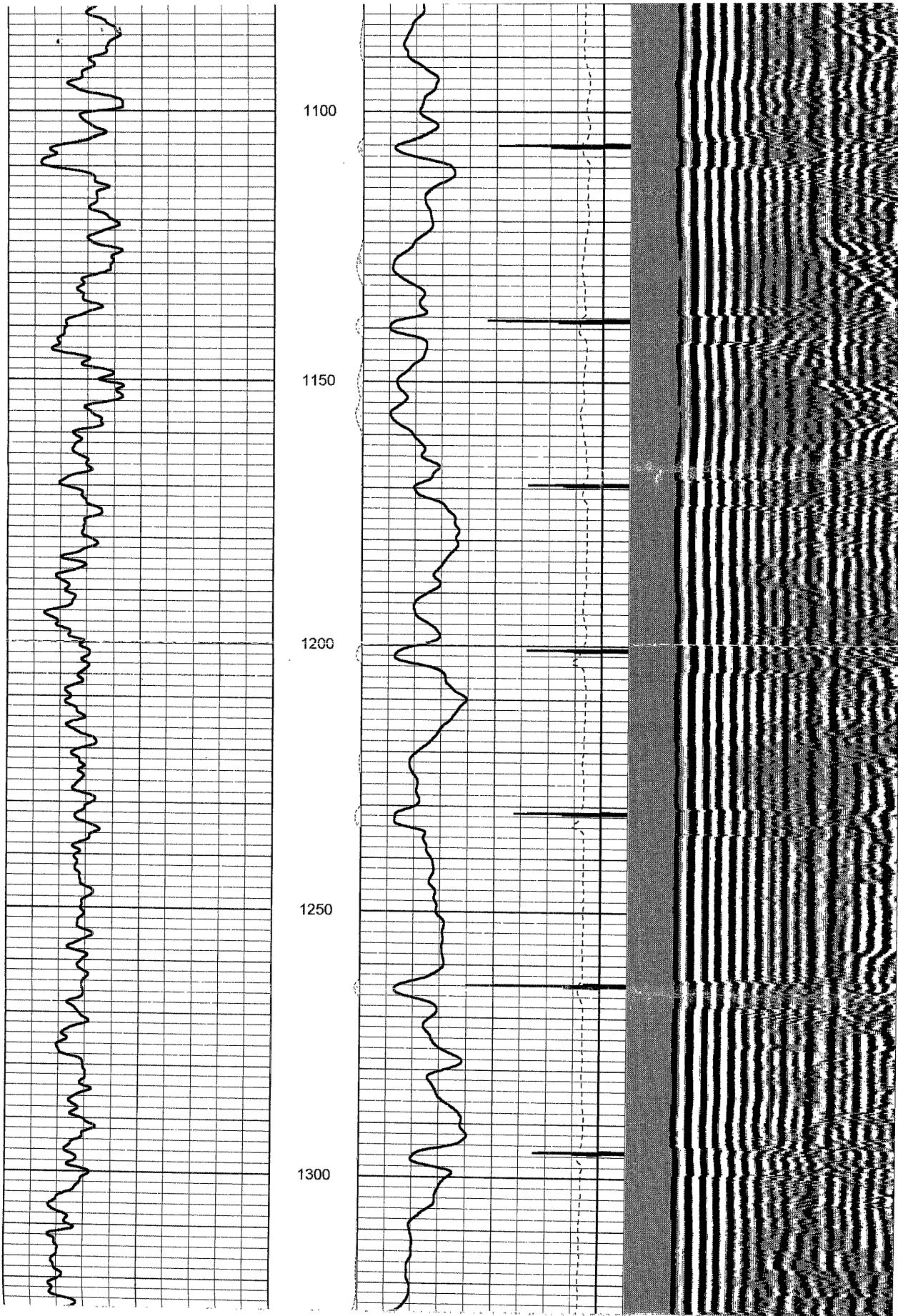
CONSERVATION DIVISION
WICHITA, KS



RECEIVED
KANSAS CORPORATION COMMISSION

JUN 05 2007

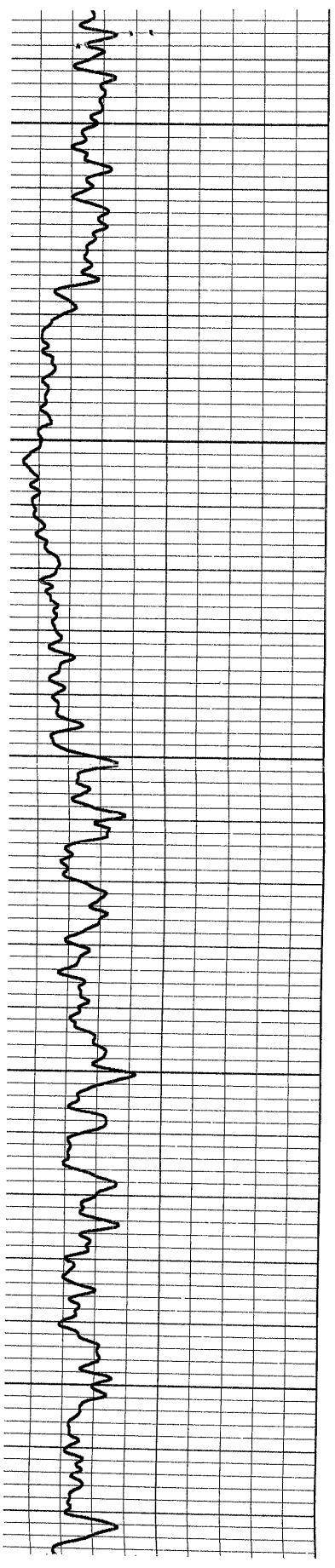
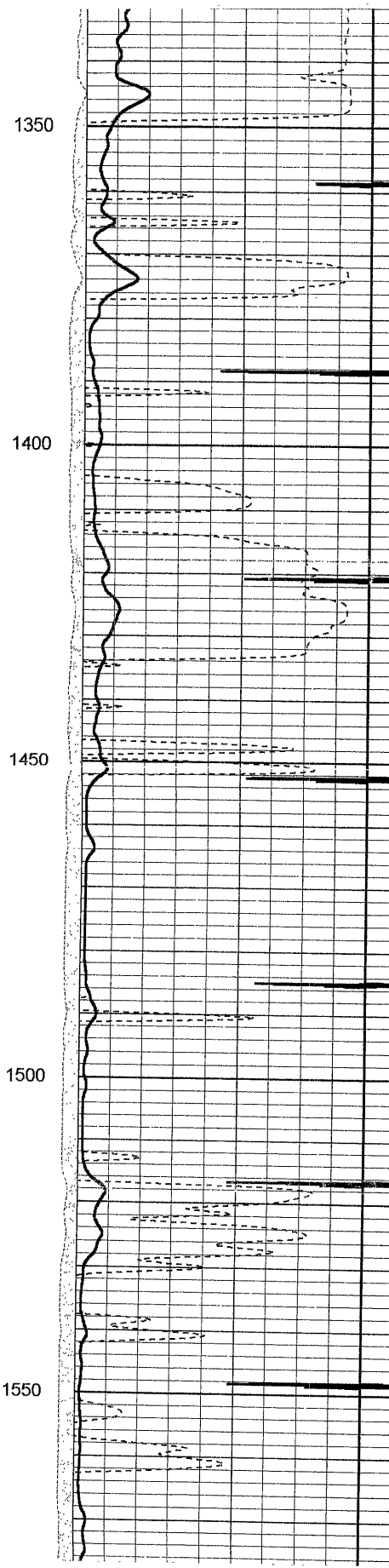
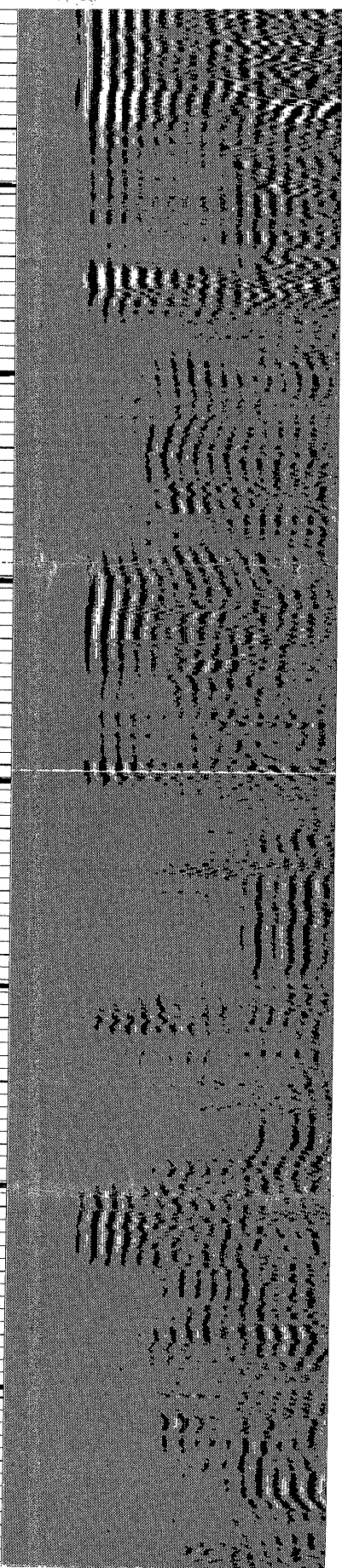
CONSERVATION DIVISION
WICHITA, KS

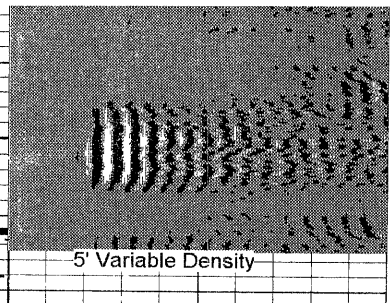
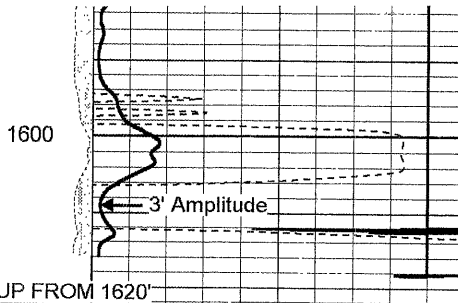
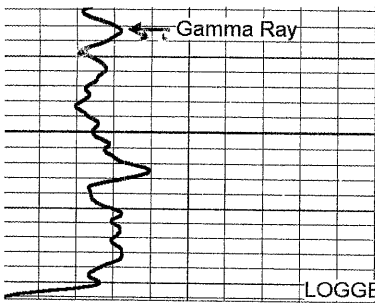


RECEIVED
KANSAS CORPORATION COMMISSION

JUN 05 2007

CONSERVATION DIVISION
WICHITA, KS





LOGGED UP FROM 1620'

0	Gamma Ray (GAP)	150	AMP3 (mV)	9	Collar Locator	-1	200	5' Variable Density	1100
				0	3' Amplitude (mV)				
				620	TT3 (usec)				

RECEIVED
 KANSAS CORPORATION COMMISSION
 JUN 05 2007
 CONSERVATION DIVISION
 WICHITA, KS