

CONFIDENTIAL

ORIGINAL

KANSAS CORPORATION COMMISSION
OIL & GAS CONSERVATION DIVISION
WELL COMPLETION FORM
WELL HISTORY - DESCRIPTION OF WELL & LEASE

Form ACO-1
September 1999
Form Must Be Typed

Operator: License # 5447
Name: OXY USA Inc.
Address: P.O. Box 2528
City/State/Zip: Liberal, KS 67905
Purchaser: ONEOK
Operator Contact Person: Vicki Carder
Phone: (620) 629-4200
Contractor: Name: Murfin Drilling Co., Inc.
License: 30606
Wellsite Geologist: Marvin T. Harvey, Jr.
Designate Type of Completion:
 New Well Re-Entry Workover
 Oil SWD SLOW Temp. Abd.
 Gas ENHR SIGW
 Dry Other (Core, WSW, Expl, Cathodic, etc)
If Workover/Re-entry: Old Well Info as follows:
Operator: _____
Well Name: _____

Original Comp. Date: _____ Original Total Depth: _____
 Deepening Re-perf. Conv. To Enhr./SWD
 Plug Back Plug Back Total Depth
 Commingled Docket No. _____
 Dual Completion Docket No. _____
 Other (SWD or Enhr.?) Docket No. _____
11/29/05 12/10/05 01/11/06
Spud Date or Date Reached TD Completion Date or Recompletion Date

API No. 15 - 175-22013-0000
County: Seward
 - - NW - SE Sec 19 Twp. 34 S. R. 33W
1972 feet from (S) N (circle one) Line of Section
1979 feet from (E) W (circle one) Line of Section
Footages Calculated from Nearest Outside Section Corner:
(circle one) NE (SE) NW SW
Lease Name: Tregellas A Well #: 1
Field Name: Salley Chester
Producing Formation: Chester
Elevation: Ground: 2891 Kelly Bushing: 2902
Total Depth: 6615 Plug Back Total Depth: 6566
Amount of Surface Pipe Set and Cemented at 1703 feet
Multiple Stage Cementing Collar Used? Yes No
If yes, show depth set _____
If Alternate II completion, cement circulated from _____
feet depth to _____ w/ _____ sx cmt.

Drilling Fluid Management Plan ALT I WHM
(Data must be collected from the Reserve Pit) 5-2-07
Chloride content 1300 mg/l ppm Fluid volume 1600 bbls
Dewatering method used Evaporation
Location of fluid disposal if hauled offsite: _____
Operator Name: _____
Lease Name: _____ License No.: _____
Quarter _____ Sec. _____ Twp, _____ S. R. East West
County: _____ Docket No.: _____

INSTRUCTIONS: An original and two copies of this form shall be filed with the Kansas Corporation Commission, 130 S. Market - Room 2078, Wichita, Kansas 6702, within 120 days of the spud date, recompletion, workover or conversion of a well. Rule 82-3-130, 82-3-106 and 82-3-107 apply. Information of side two of this form will be held confidential for a period of 12 months if requested in writing and submitted with the form (see rule 82-3-107 for confidentiality in excess of 12 months). One copy of all wireline logs and geologist well report shall be attached with this form. ALL CEMENTING TICKETS MUST BE ATTACHED. Submit CP-4 form with all plugged wells. Submit CP-111 form with all temporarily abandoned wells.

All requirements of the statutes, rules and regulations promulgated to regulate the oil and gas industry have been fully complied with and the statements herein are complete and correct to the best of my knowledge.

Signature: Vicki Carder
Title: Capital Project Date 02/08/06
Subscribed and sworn to before me this 8th day of Feb.
20 06
Notary Public: Anita Peterson
Date Commission Expires: Oct. 1, 2009

KCC Office Use Only
 Letter of Confidentiality Attached
If Denied, Yes Date: _____
 Wireline Log Received
 Geologist Report Received
 UIC Distribution
CONFIDENTIAL
FEB 08 2006

ANITA PETERSON
Notary Public - State of Kansas
My Appt. Expires October 1, 2009

KCC

ORIGINAL

Side Two

Operator Name: OXY USA, Inc. Lease Name: Tregellas A Well #: 1
 Sec. 19 Twp. 34 S. R. 33W East West County: Seward

Instructions: Show important tops and base of formations penetrated. Detail all cores. Report all final copies of drill stems tests giving interval tested, time tool open and closed, flowing and shut-in pressures, whether shut-in pressure reached static level, hydrostatic pressures, bottom hole temperature, fluid recovery, and flow rates if gas to surface test, along with final chart(s). Attach extra sheet if more space is needed. Attach copy of all Electric Wireline Logs surveyed. Attach final geological well site report.

Drill Stem Tests Taken <input type="checkbox"/> Yes <input checked="" type="checkbox"/> No <i>(Attach Additional Sheets)</i> Samples Sent to Geological Survey <input checked="" type="checkbox"/> Yes <input type="checkbox"/> No Cores Taken <input type="checkbox"/> Yes <input checked="" type="checkbox"/> No Electric Log Run <input checked="" type="checkbox"/> Yes <input type="checkbox"/> No <i>(Submit Copy)</i> List All E. Logs Run: Microlog Sonic Induction Neutron CBL Geological Report	<input checked="" type="checkbox"/> Log Formation (Top), Depth and Datum <input type="checkbox"/> Sample <table style="width: 100%; border-collapse: collapse;"> <tr> <td style="width: 60%;">Name</td> <td style="width: 20%;">Top</td> <td style="width: 20%;">Datum</td> </tr> <tr> <td>Krider</td> <td>2678</td> <td>224</td> </tr> <tr> <td>Winfield</td> <td>2731</td> <td>171</td> </tr> <tr> <td>Council Grove</td> <td>3002</td> <td>-100</td> </tr> <tr> <td>Heebner</td> <td>4364</td> <td>-1462</td> </tr> <tr> <td>Toronto</td> <td>4388</td> <td>-1486</td> </tr> <tr> <td>Lansing</td> <td>4498</td> <td>-1596</td> </tr> <tr> <td>Cherokee</td> <td>5515</td> <td>-2613</td> </tr> </table> (See Side Three)	Name	Top	Datum	Krider	2678	224	Winfield	2731	171	Council Grove	3002	-100	Heebner	4364	-1462	Toronto	4388	-1486	Lansing	4498	-1596	Cherokee	5515	-2613
Name	Top	Datum																							
Krider	2678	224																							
Winfield	2731	171																							
Council Grove	3002	-100																							
Heebner	4364	-1462																							
Toronto	4388	-1486																							
Lansing	4498	-1596																							
Cherokee	5515	-2613																							

CASING RECORD <input checked="" type="checkbox"/> New <input type="checkbox"/> Used							
Report all strings set-conductor, surface, intermediate, production, etc.							
Purpose of String	Size Hole Drilled	Size Casing Set (in. O.D.)	Weight Lbs./ft.	Setting Depth	Type of Cement	# Sacks Used	Type and Percent Additives
Conductor					C		
Surface	12 1/4	8 5/8	24	1703	C	585	35/65 Poz + Additives
Production	7 7/8	5 1/2	17	6610	H	200	50/50 Poz + Additives

ADDITIONAL CEMENTING / SQUEEZE RECORD

Purpose:	Depth Top Bottom	Type of Cement	#Sacks Used	Type and Percent Additives
<input type="checkbox"/> Perforate				
<input type="checkbox"/> Protect Casing	-			
<input type="checkbox"/> Plug Back TD				
<input type="checkbox"/> Plug off Zone	-			

Shots Per Foot	PERFORATION RECORD – Bridge Plugs Set/type		Acid, Fracture, Shot, Cement Squeeze Record	
	Specify Footage of Each Interval Perforated		(Amount and Kind of Material Used)	
2	6195-6214		Acidize-262 bbls 17% HCL-FE	
3	6214-6240		Frac-212842 gls Delta (15# X-linked gel) 75QN2	
4	6240-6266		and 292,985# 20/40 Sand	

TUBING RECORD	Size NA	Set At	Packer At	Liner Run <input type="checkbox"/> Yes <input checked="" type="checkbox"/> No
Date of First, Resumed Production, SWD or Enhr. 02/06/06		Producing Method <input checked="" type="checkbox"/> Flowing <input type="checkbox"/> Pumping <input type="checkbox"/> Gas Lift <input type="checkbox"/> Other (Explain)		
Estimated Production Per 24 Hours	Oil BBLS 0	Gas Mcf 664	Water Bbls 0	Gas-Oil Ratio Gravity

Disposition of Gas	METHOD OF COMPLETION	Production Interval
<input type="checkbox"/> Vented <input checked="" type="checkbox"/> Sold <input type="checkbox"/> Used on Lease <i>(If vented, Submit ACO-18)</i>	<input type="checkbox"/> Open Hole <input checked="" type="checkbox"/> Perf. <input type="checkbox"/> Dually Comp. <input type="checkbox"/> Commingled _____ <input type="checkbox"/> Other (Specify) _____	_____

Side Three

Operator Name: OXY USA Inc. Lease Name: Tregellas A Well #: 1

Sec. 19 Twp. 34 S. R. 33W East West County: Seward

<u>Name</u>	<u>Top</u>	<u>Datum</u>
Atoka	5683	-2781
Morrow	5884	-2982
Chester	6175	-3273
St. Genevieve	6531	-3629

RECEIVED
FEB 10 2006
KCC WICHITA

CONFIDENTIAL
FEB 08 2006
KCC

CONFIDENTIAL



Cementing Service Report

Customer OXY USA, INC.						Job Number 2205548985				
Well TREGELLAS A 1			Location (legal) Sec 19-T34S-R33W			Schlumberger Location Perryton, TX			Job Start 2005-Nov-30	
Field SALLEY		Formation Name/Type			Deviation °		Bit Size 12.3 in	Well MD 1,704 ft	Well TVD 1,704 ft	
County SEWARD		State/Province KANSAS			BHP psi	BHST 98 °F	BHCT °F	Pore Press. Gradient psi/ft		
Well Master: 0630749842		API / UWI: 15175220130000			Casing/Liner					
Rig Name MURFIN 20		Drilled For Gas		Service Via Land		Depth, ft 1703	Size, in 8.63	Weight, lb/ft 24	Grade	Thread
Offshore Zone		Well Class New		Well Type Development		Tubing/Drill Pipe				
Drilling Fluid Type Bentonite		Max. Density 9.6 lb/gal		Plastic Viscosity cp		Depth,	Size, in	Weight, lb/ft	Grade	Thread
Service Line Cementing		Job Type Cem Surface Casing			Perforations/Open Hole					
Max. Allowed Tubing Pressure 1500 psi		Max. Allowed Ann. Pressure psi		Wellhead Connection 8 5/8" H & M		Top, ft	Bottom, ft	spf	No. of Shots	Total Interval ft
Service Instructions CEMENT 8 5/8" SURFACE CASING WITH: 10 BBL FRESH WATER 585 SK 35:65 POZ C + 6% D020 + 2% S001 + 0.5 pps D029 195 SK CLASS C + 2% S001 + 0.25 pps D029 DISPLACE WITH FRESH WATER						Diameter in	Treat Down Casing	Displacement 105.5 bbl	Packer Type	Packer Depth ft
Casing/Tubing Secured <input type="checkbox"/>		1 Hole Volume Circulated prior to Cementing <input type="checkbox"/>		Casing Tools			Squeeze Job			
Lift Pressure: 250 psi		Pipe Rotated <input type="checkbox"/>		Pipe Reciprocated <input type="checkbox"/>		Shoe Type: Guide		Squeeze Type		
No. Centralizers: 1		Top Plugs: 1		Bottom Plugs:		Shoe Depth: 1703 ft		Tool Type:		
Cement Head Type: Single		Job Scheduled For: 2005-Nov-30 20:30		Arrived on Location: 2005-Dec-01 2:00		Stage Tool Type:		Tool Depth: ft		
Job Scheduled For: 2005-Nov-30 20:30		Arrived on Location: 2005-Dec-01 2:00		Leave Location:		Stage Tool Depth: ft		Tail Pipe Size: in		Tail Pipe Depth: ft
Job Scheduled For: 2005-Nov-30 20:30		Arrived on Location: 2005-Dec-01 2:00		Leave Location:		Collar Type: Auto-Fill		Tail Pipe Depth: ft		Collar Depth: 1656.83 ft
Collar Depth: 1656.83 ft		Sqz Total Vol: bbl								
Date	Time	Pressure	Density	CMT RATE	CMT VOL	0	0	0	Message	
	24 hr clock	psi	lb/gal	bbbl/min	bbl	0	0	0		
2005-Nov-30	22:24	0	8.29	0.0	0.0	0	0	0		
2005-Nov-30	22:25	0	8.29	0.0	0.0	0	0	0		
2005-Nov-30	22:25								Pressure Test Lines	
2005-Nov-30	22:25	0	8.29	0.0	0.0	0	0	0		
2005-Nov-30	22:25	0	8.29	0.0	0.0	0	0	0		
2005-Nov-30	22:26	0	8.29	0.0	0.0	0	0	0		
2005-Nov-30	22:26	5	8.29	0.0	0.0	0	0	0		
2005-Nov-30	22:27	5	8.29	0.0	0.0	0	0	0		
2005-Nov-30	22:27	64	8.31	0.0	0.0	0	0	0		
2005-Nov-30	22:27	14	8.29	0.0	0.0	0	0	0		
2005-Nov-30	22:28	14	8.29	0.0	0.0	0	0	0		
2005-Nov-30	22:28	124	8.29	0.0	0.0	0	0	0		
2005-Nov-30	22:29	1753	8.29	0.0	0.0	0	0	0		
2005-Nov-30	22:29	1341	8.29	0.0	0.0	0	0	0		
2005-Nov-30	22:29	18	8.29	0.0	0.0	0	0	0		
2005-Nov-30	22:30	60	8.28	0.0	0.0	0	0	0		
2005-Nov-30	22:30	165	8.29	5.5	1.0	0	0	0		
2005-Nov-30	22:31	188	8.29	5.2	3.2	0	0	0		
2005-Nov-30	22:31	188	8.29	5.3	5.4	0	0	0		
2005-Nov-30	22:32	160	8.29	5.1	7.5	0	0	0		
2005-Nov-30	22:32	192	8.40	5.1	9.4	0	0	0		
2005-Nov-30	22:32								Reset Total, KCC bbl	

**RECEIVED
FEB 10 2006**

KCC WICHITA

**CONFIDENTIAL
FEB 08 2006**

Well			Field			Service Date		Customer		Job Number
TREGELLAS A #1			SALLEY			05334-Nov-30		OXY USA, INC.		2205548985
Date	Time	Pressure	Density	CMT RATE	CMT VOL	0	0	0	Message	
	24 hr clock	psi	lb/gal	bbf/min	bbf	0	0	0		
2005-Nov-30	22:32	201	8.51	5.1	0.2	0	0	0		
2005-Nov-30	22:32								Start Mixing Lead Slurry	
2005-Nov-30	22:32	201	8.72	5.1	0.5	0	0	0		
2005-Nov-30	22:32	192	10.08	5.2	2.3	0	0	0		
2005-Nov-30	22:33	220	11.50	5.3	4.5	0	0	0		
2005-Nov-30	22:33	188	12.17	5.3	6.7	0	0	0		
2005-Nov-30	22:34	179	12.05	5.3	8.9	0	0	0		
2005-Nov-30	22:34	174	12.07	5.4	11.1	0	0	0		
2005-Nov-30	22:34	174	12.07	5.4	13.4	0	0	0		
2005-Nov-30	22:35	160	12.08	5.4	15.7	0	0	0		
2005-Nov-30	22:35	156	12.13	5.3	17.9	0	0	0		
2005-Nov-30	22:36	142	12.18	5.3	20.1	0	0	0		
2005-Nov-30	22:36	142	12.21	5.3	22.3	0	0	0		
2005-Nov-30	22:37	146	12.24	5.3	24.5	0	0	0		
2005-Nov-30	22:37	142	12.27	5.3	26.7	0	0	0		
2005-Nov-30	22:37	137	12.15	5.4	29.0	0	0	0		
2005-Nov-30	22:38	137	12.07	5.4	31.2	0	0	0		
2005-Nov-30	22:38	137	11.99	5.4	33.5	0	0	0		
2005-Nov-30	22:39	137	11.97	5.5	35.8	0	0	0		
2005-Nov-30	22:39	137	12.01	5.4	38.0	0	0	0		
2005-Nov-30	22:39	137	12.02	5.5	40.3	0	0	0		
2005-Nov-30	22:40	142	12.13	5.5	42.6	0	0	0		
2005-Nov-30	22:40	142	12.14	5.5	44.9	0	0	0		
2005-Nov-30	22:41	142	12.09	5.5	47.2	0	0	0		
2005-Nov-30	22:41	142	12.14	5.6	49.5	0	0	0		
2005-Nov-30	22:42	142	12.16	5.6	51.8	0	0	0		
2005-Nov-30	22:42	142	12.17	5.6	54.2	0	0	0		
2005-Nov-30	22:42	146	12.17	5.6	56.5	0	0	0		
2005-Nov-30	22:43	142	12.17	5.6	58.8	0	0	0		
2005-Nov-30	22:43	146	12.15	5.6	61.2	0	0	0		
2005-Nov-30	22:44	142	12.14	5.6	63.5	0	0	0		
2005-Nov-30	22:44	146	12.13	5.7	65.9	0	0	0		
2005-Nov-30	22:44	137	12.10	5.4	68.2	0	0	0		
2005-Nov-30	22:45	137	11.99	5.4	70.5	0	0	0		
2005-Nov-30	22:45	137	12.24	5.4	72.7	0	0	0		
2005-Nov-30	22:46	133	12.01	5.4	75.0	0	0	0		
2005-Nov-30	22:46	133	12.11	5.4	77.2	0	0	0		
2005-Nov-30	22:47	137	12.15	5.4	79.5	0	0	0		
2005-Nov-30	22:47	110	12.19	5.4	81.8	0	0	0		
2005-Nov-30	22:47	137	12.21	5.4	84.1	0	0	0		
2005-Nov-30	22:48	133	12.23	5.4	86.3	0	0	0		
2005-Nov-30	22:48	119	12.24	5.4	88.6	0	0	0		
2005-Nov-30	22:49	137	12.18	5.4	90.8	0	0	0		
2005-Nov-30	22:49	142	12.21	5.5	93.1	0	0	0		
2005-Nov-30	22:49	142	12.24	5.5	95.4	0	0	0		
2005-Nov-30	22:50	137	12.23	5.4	97.6	0	0	0		
2005-Nov-30	22:50	142	12.24	5.4	99.9	0	0	0		
2005-Nov-30	22:51	137	12.29	5.5	102.2	0	0	0		
2005-Nov-30	22:51	137	12.24	5.5	104.5	0	0	0		
2005-Nov-30	22:52	137	12.15	5.5	106.7	0	0	0		
2005-Nov-30	22:52	128	12.17	5.5	109.0	0	0	0		
2005-Nov-30	22:52	137	12.17	5.5	111.3	0	0	0		
2005-Nov-30	22:53	133	12.19	5.5	113.6	0	0	0		
2005-Nov-30	22:53	133	12.21	5.5	115.9	0	0	0		

RECEIVED

FEB 10 2006

KCC WICHITA

CONFIDENTIAL

FEB 08 2006

KCC

Well		Field			Service Date		Customer		Job Number
TREGELLAS A #1		SALLEY			05334-Nov-30		OXY USA, INC.		2205548865
Date	Time	Pressure	Density	CMT RATE	CMT VOL	0	0	0	Message
	24 hr clock	psi	lb/gal	bbt/min	bbt	0	0	0	
2005-Nov-30	22:54	142	12.21	5.5	118.1	0	0	0	
2005-Nov-30	22:54	133	12.21	5.5	120.4	0	0	0	
2005-Nov-30	22:54	133	12.24	5.5	122.7	0	0	0	
2005-Nov-30	22:55	137	12.27	5.5	125.0	0	0	0	
2005-Nov-30	22:55	137	12.29	5.5	127.3	0	0	0	
2005-Nov-30	22:56	137	12.30	5.5	129.5	0	0	0	
2005-Nov-30	22:56	137	12.31	5.5	131.8	0	0	0	
2005-Nov-30	22:57	137	12.32	5.5	134.1	0	0	0	
2005-Nov-30	22:57	137	12.30	5.5	136.4	0	0	0	
2005-Nov-30	22:57	137	12.23	5.5	138.7	0	0	0	
2005-Nov-30	22:58	137	12.16	5.5	141.0	0	0	0	
2005-Nov-30	22:58	133	12.11	5.5	143.3	0	0	0	
2005-Nov-30	22:59	137	12.05	5.5	145.6	0	0	0	
2005-Nov-30	22:59	137	11.88	5.5	147.9	0	0	0	
2005-Nov-30	22:59	137	12.11	5.5	150.2	0	0	0	
2005-Nov-30	23:00	142	12.21	5.5	152.5	0	0	0	
2005-Nov-30	23:00	137	12.14	5.5	154.8	0	0	0	
2005-Nov-30	23:01	137	12.10	5.5	157.1	0	0	0	
2005-Nov-30	23:01	142	12.10	5.5	159.4	0	0	0	
2005-Nov-30	23:02	137	12.09	5.5	161.7	0	0	0	
2005-Nov-30	23:02	160	12.21	5.5	164.0	0	0	0	
2005-Nov-30	23:02	146	12.26	5.5	166.3	0	0	0	
2005-Nov-30	23:03	142	12.30	5.5	168.6	0	0	0	
2005-Nov-30	23:03	146	12.23	5.5	170.9	0	0	0	
2005-Nov-30	23:04	142	12.18	5.5	173.2	0	0	0	
2005-Nov-30	23:04	137	12.27	5.5	175.5	0	0	0	
2005-Nov-30	23:04	137	12.23	5.5	177.8	0	0	0	
2005-Nov-30	23:05	142	12.32	5.5	180.1	0	0	0	
2005-Nov-30	23:05	142	12.34	5.5	182.5	0	0	0	
2005-Nov-30	23:06	142	12.37	5.5	184.8	0	0	0	
2005-Nov-30	23:06	142	12.31	5.5	187.1	0	0	0	
2005-Nov-30	23:07	142	12.24	5.5	189.4	0	0	0	
2005-Nov-30	23:07	142	12.21	5.5	191.7	0	0	0	
2005-Nov-30	23:07	142	12.16	5.5	194.0	0	0	0	
2005-Nov-30	23:08	142	12.09	5.5	196.3	0	0	0	
2005-Nov-30	23:08	137	12.04	5.5	198.6	0	0	0	
2005-Nov-30	23:09	142	12.01	5.5	200.9	0	0	0	
2005-Nov-30	23:09	137	11.99	5.6	203.2	0	0	0	
2005-Nov-30	23:09	142	12.01	5.5	205.5	0	0	0	
2005-Nov-30	23:10	142	12.07	5.5	207.8	0	0	0	
2005-Nov-30	23:10	142	12.11	5.5	210.1	0	0	0	
2005-Nov-30	23:11	146	12.13	5.5	212.4	0	0	0	
2005-Nov-30	23:11	142	12.10	5.5	214.7	0	0	0	
2005-Nov-30	23:12	142	12.07	5.5	217.0	0	0	0	
2005-Nov-30	23:12	142	12.08	5.5	219.3	0	0	0	
2005-Nov-30	23:12	142	12.10	5.5	221.6	0	0	0	
2005-Nov-30	23:13	142	11.91	5.5	223.9	0	0	0	
2005-Nov-30	23:13	142	12.03	5.6	224.4	0	0	0	
2005-Nov-30	23:13								Reset Total, Vol = 224.40 bbl
2005-Nov-30	23:13								Start Mixing Tail Slurry
2005-Nov-30	23:13	142	12.13	5.6	0.7	0	0	0	
2005-Nov-30	23:13	151	12.33	5.6	1.9	0	0	0	
2005-Nov-30	23:14	151	12.82	5.6	4.2	0	0	0	
2005-Nov-30	23:14	156	13.12	5.6	6.5	0	0	0	

CONFIDENTIAL
FEB 08 2006
KCC
RECEIVED
FEB 10 2006
KCC WICHITA

Well		Field		Service Date		Customer			Job Number
TREGELLAS A #1		SALLEY		05334-Nov-30		OXY USA, INC.			2205548985
Date	Time	Pressure	Density	CMT RATE	CMT VOL	0	0	0	Message
	24 hr clock	psi	lb/gal	bbl/min	bbl	0	0	0	
2005-Nov-30	23:14	160	13.27	5.5	8.8	0	0	0	
2005-Nov-30	23:15	151	13.42	5.3	11.1	0	0	0	
2005-Nov-30	23:15	-3850	-6.25	0.0	11.6	0	0	0	
2005-Nov-30	23:16	-3850	-6.25	0.0	11.6	0	0	0	
2005-Nov-30	23:16	-3850	-6.25	0.0	11.6	0	0	0	
2005-Nov-30	23:17	-3850	-6.25	0.0	11.6	0	0	0	
2005-Nov-30	23:17	-3850	-6.25	0.0	11.6	0	0	0	
2005-Nov-30	23:17	-3850	-6.25	0.0	11.6	0	0	0	
2005-Nov-30	23:18	-3850	-6.25	0.0	11.6	0	0	0	
2005-Nov-30	23:18	-3850	-6.25	0.0	11.6	0	0	0	
2005-Nov-30	23:19	-3850	-6.25	0.0	11.6	0	0	0	
2005-Nov-30	23:19	-3850	-6.25	0.0	11.6	0	0	0	
2005-Nov-30	23:19	-3850	-6.25	0.0	11.6	0	0	0	
2005-Nov-30	23:20	-3850	-6.25	0.0	11.6	0	0	0	
2005-Nov-30	23:20	-3850	-6.25	0.0	11.6	0	0	0	
2005-Nov-30	23:21	-3850	-6.25	0.0	11.6	0	0	0	
2005-Nov-30	23:21	-3850	-6.25	0.0	11.6	0	0	0	
2005-Nov-30	23:22	-3850	-6.25	0.0	11.6	0	0	0	
2005-Nov-30	23:22	-3850	-6.25	0.0	11.6	0	0	0	
2005-Nov-30	23:22	-3850	-6.25	0.0	11.6	0	0	0	
2005-Nov-30	23:23	-3850	-6.25	0.0	11.6	0	0	0	
2005-Nov-30	23:23	-3850	-6.25	0.0	11.6	0	0	0	
2005-Nov-30	23:24	-3850	-6.25	0.0	11.6	0	0	0	
2005-Nov-30	23:24	-3850	-6.25	0.0	11.6	0	0	0	
2005-Nov-30	23:24	-3850	-6.25	0.0	11.6	0	0	0	
2005-Nov-30	23:25	-3850	-6.25	0.0	11.6	0	0	0	
2005-Nov-30	23:25	-3850	-6.25	0.0	11.6	0	0	0	
2005-Nov-30	23:26	-3850	-6.25	0.0	11.6	0	0	0	
2005-Nov-30	23:26	-3850	-6.25	0.0	11.6	0	0	0	
2005-Nov-30	23:27	-3850	-6.25	0.0	11.6	0	0	0	
2005-Nov-30	23:27	-3850	-6.25	0.0	11.6	0	0	0	
2005-Nov-30	23:27	-3850	-6.25	0.0	11.6	0	0	0	
2005-Nov-30	23:28	-3850	-6.25	0.0	11.6	0	0	0	
2005-Nov-30	23:28	-3850	-6.25	0.0	11.6	0	0	0	
2005-Nov-30	23:29	-3850	-6.25	0.0	11.6	0	0	0	
2005-Nov-30	23:29	-3850	-6.25	0.0	11.6	0	0	0	
2005-Nov-30	23:30	-3850	-6.25	0.0	11.6	0	0	0	
2005-Nov-30	23:30	-3850	-6.25	0.0	11.6	0	0	0	
2005-Nov-30	23:30	-3850	-6.25	0.0	11.6	0	0	0	
2005-Nov-30	23:31	-3850	-6.25	0.0	11.6	0	0	0	
2005-Nov-30	23:31	-3850	-6.25	0.0	11.6	0	0	0	
2005-Nov-30	23:32	-3850	-6.25	0.0	11.6	0	0	0	
2005-Nov-30	23:32	-3850	-6.25	0.0	11.6	0	0	0	
2005-Nov-30	23:32	-3850	-6.25	0.0	11.6	0	0	0	
2005-Nov-30	23:33	-3850	-6.25	0.0	11.6	0	0	0	
2005-Nov-30	23:33	-3850	-6.25	0.0	11.6	0	0	0	
2005-Nov-30	23:34	-3850	-6.25	0.0	11.6	0	0	0	
2005-Nov-30	23:34	-3850	-6.25	0.0	11.6	0	0	0	
2005-Nov-30	23:35	-3850	-6.25	0.0	11.6	0	0	0	
2005-Nov-30	23:35	-3850	-6.25	0.0	11.6	0	0	0	
2005-Nov-30	23:35	-3850	-6.25	0.0	11.6	0	0	0	
2005-Nov-30	23:36	-3850	-6.25	0.0	11.6	0	0	0	
2005-Nov-30	23:36	-3850	-6.25	0.0	11.6	0	0	0	
2005-Nov-30	23:37	-3850	-6.25	0.0	11.6	0	0	0	

RECEIVED

FEB 10 2006

KCC WICHITA

CONFIDENTIAL

FEB 08 2006

KCC

Well		Field				Service Date		Customer		Job Number
TREGELLAS A #1		SALLEY				05334-Nov-30		OXY USA, INC.		2205546995
Date	Time	Pressure	Density	CMT RATE	CMT VOL	0	0	0	Message	
	24 hr clock	psi	lb/gal	bbl/min	bbl	0	0	0		
2005-Nov-30	23:37	-3850	-6.25	0.0	11.6	0	0	0		
2005-Nov-30	23:37	-3850	-6.25	0.0	11.6	0	0	0		
2005-Nov-30	23:38	-3850	-6.25	0.0	11.6	0	0	0		
2005-Nov-30	23:38	-3850	-6.25	0.0	11.6	0	0	0		
2005-Nov-30	23:39	-3850	-6.25	0.0	11.6	0	0	0		
2005-Nov-30	23:39	-3850	-6.25	0.0	11.6	0	0	0		
2005-Nov-30	23:40	-3850	-6.25	0.0	11.6	0	0	0		
2005-Nov-30	23:40	-3850	-6.25	0.0	11.6	0	0	0		
2005-Nov-30	23:40	-3850	-6.25	0.0	11.6	0	0	0		
2005-Nov-30	23:41	-3850	-6.25	0.0	11.6	0	0	0		
2005-Nov-30	23:41	-5	-0.02	0.0	11.6	0	0	0		
2005-Nov-30	23:42	0	1.00	0.0	11.6	0	0	0		
2005-Nov-30	23:42	0	1.00	0.0	11.6	0	0	0		
2005-Nov-30	23:42	0	1.00	0.0	11.6	0	0	0		
2005-Nov-30	23:43	0	1.00	0.0	11.6	0	0	0		
2005-Nov-30	23:43	0	1.00	0.0	11.6	0	0	0		
2005-Nov-30	23:44	0	1.00	0.0	11.6	0	0	0		
2005-Nov-30	23:44	0	1.00	0.0	11.6	0	0	0		
2005-Nov-30	23:45	0	1.00	0.0	11.6	0	0	0		
2005-Nov-30	23:45	0	1.00	0.0	11.6	0	0	0		
2005-Nov-30	23:45	0	1.00	0.0	11.6	0	0	0		
2005-Nov-30	23:46	0	0.99	0.0	11.6	0	0	0		
2005-Nov-30	23:46	0	0.99	0.0	11.6	0	0	0		
2005-Nov-30	23:47	0	0.99	0.0	11.6	0	0	0		
2005-Nov-30	23:47	0	0.99	0.0	11.6	0	0	0		
2005-Nov-30	23:47	0	1.00	0.0	11.6	0	0	0		
2005-Nov-30	23:48	0	0.99	0.0	11.6	0	0	0		
2005-Nov-30	23:48	0	0.99	0.0	11.6	0	0	0		
2005-Nov-30	23:49	0	0.99	0.0	11.6	0	0	0		
2005-Nov-30	23:49	0	0.99	0.0	11.6	0	0	0		
2005-Nov-30	23:50	0	0.99	0.0	11.6	0	0	0		
2005-Nov-30	23:50	0	0.99	0.0	11.6	0	0	0		
2005-Nov-30	23:50	0	0.99	0.0	11.6	0	0	0		
2005-Nov-30	23:51	0	0.99	0.0	11.6	0	0	0		
2005-Nov-30	23:51	0	0.99	0.0	11.6	0	0	0		
2005-Nov-30	23:52	0	0.99	0.0	11.6	0	0	0		
2005-Nov-30	23:52	0	0.99	0.0	11.6	0	0	0		
2005-Nov-30	23:52	0	0.99	0.0	11.6	0	0	0		
2005-Nov-30	23:53	0	0.99	0.0	11.6	0	0	0		
2005-Nov-30	23:53	0	0.99	0.0	11.6	0	0	0		
2005-Nov-30	23:54	0	0.99	0.0	11.6	0	0	0		
2005-Nov-30	23:54	0	0.99	0.0	11.6	0	0	0		
2005-Nov-30	23:55	0	0.99	0.0	11.6	0	0	0		
2005-Nov-30	23:55	0	0.99	0.0	11.6	0	0	0		
2005-Nov-30	23:55	0	0.99	0.0	11.6	0	0	0		
2005-Nov-30	23:56	0	0.99	0.0	11.6	0	0	0		
2005-Nov-30	23:56	0	0.99	0.0	11.6	0	0	0		
2005-Nov-30	23:57	0	0.99	0.0	11.6	0	0	0		
2005-Nov-30	23:57								Stopped Recording	

RECEIVED
FEB 10 2006

KCC WICHITA

CONFIDENTIAL
FEB 08 2006

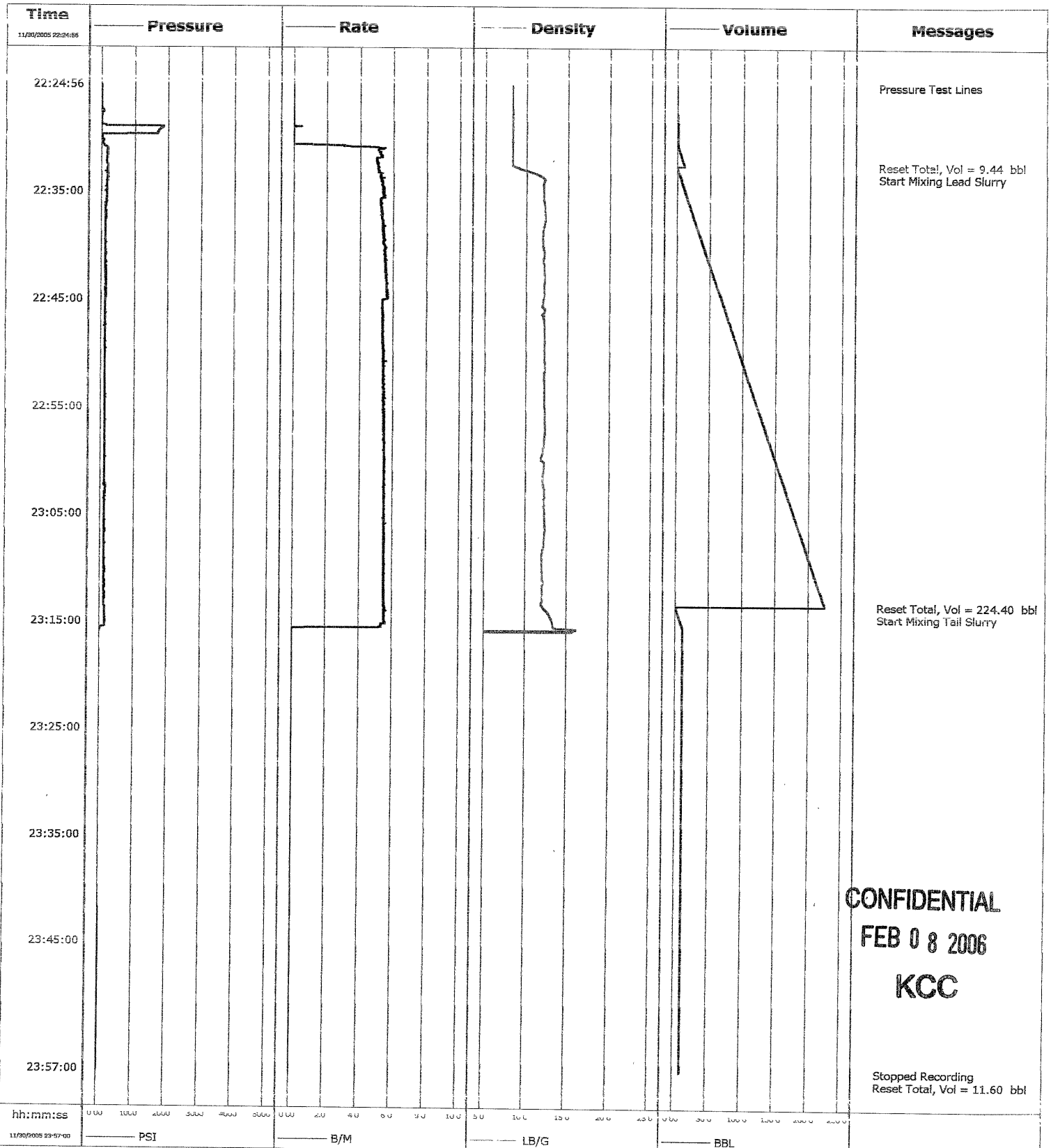
Stopped Recording KCC

Well TREGELLAS A #1			Field SALLEY			Service Date 05334-Nov-30		Customer OXY USA, INC.		Job Number 2200548885	
Date	Time 24 hr- clock	Pressure psi	Density lb/gal	CMT RATE bbl/min	CMT VOL bbl	0	0	0	Message		
						0	0	0			
Post Job Summary											
Average Pump Rates, bpm					Volume of Fluid Injected, bbl						
Slurry	N2	Mud	Maximum Rate	Total Slurry	Mud	Spacer	N2				
5			5.5	237		10					
Treating Pressure Summary, psi					Breakdown Fluid						
Maximum	Final	Average	Bump Plug to	Breakdown	Volume		Density				
750		175	700				lb/gal				
Avg. N2 Percent		Designed Slurry Volume		Displacement		Mix Water Temp		<input checked="" type="checkbox"/> Cement Circulated to Surface? Volume 10 bbl		<input type="checkbox"/> Washed Thru Perfs To ft	
		274 bbl		103.9 bbl		°F					
Customer or Authorized Representative				Schlumberger Supervisor				<input type="checkbox"/> CirculationLost			
Willimon, Wes				Grella Chacon, Miguel				<input checked="" type="checkbox"/> Job Completed			

RECEIVED
FEB 10 2006
KCC WICHITA

CONFIDENTIAL
FEB 08 2006
KCC

Well	Tregallas A 1	FEB 10 2006	Client	OXY USA
Field			SIR No.	2205548985
Engineer	Miguel Angel Grelfa	KCC WICHITA	Job Type	Surface
Country	United States		Job Date	11-30-2005



CONFIDENTIAL
FEB 08 2006
KCC

Date	11/30/05
Company	OXY USA
Job Number	2205548985
Well Name	Tregallas A
Well Number	1
County	Seward
State	KS

Schlumberger

Pipe Size	8 5/8	
Pipe Weight	24	2
Pipe Depth	1703	
Shoe Length	46.17	2.94
Insert Depth	1656.83	
Hole Size	12 1/4	
Hole Depth	1704	

1st System	
585 sacks	35/65 Poz/C
2.18 yield	6% D020 + 2% S001 + 0.5 pps D02
12.2 weight	
12.3 water	171
cubic ft.	1275
height	3090
bbls	227

Pipe Volume	108
Annular Volume	125
Total Cement	274
Total Water	326

Pipe Factor	0.0637	0.06
Annular Factor	0.0735	
Height Factor	2.4231	

2nd System	
195 sacks	C ³
1.34 yield	2%S1, 1/4PPSD29
14.8 weight	
6.29 water	29
cubic ft.	261
height	633
bbls	46.5

Casing lift	700
Cement lift	403
Annulus Pressure	1166.6 psi
Pressure in Casing	752.34
Difference	-414
CSG weight	40872 lbs

3rd System	
sacks	
yield	
weight	
water	0
cubic ft.	0
height	0
bbls	0

Test	1500
0 Mud	
10 Fresh Water	
227 Lead	12.2
47 Tail	14.8
105.5 Displacement	Densi
	Displacement w/ underdiplace
	1167 Maximum Pressure

4th System	
sacks	
yield	
weight	
water	0
cubic ft.	0
height	0
bbls	0

Pump time @ bpm 63 MIN

RECEIVED
FEB 10 2006
KCC WICHITA
CONFIDENTIAL
FEB 08 2006
KCC

Customer OXY USA, INC.	Job Number 2205550063
----------------------------------	---------------------------------

Well TREGELLAS A 1		Location (legal) Sec 19-T34S-R33W		Schlumberger Location Perryton, TX		Job Start 2005-Dec-12		
Field SALLEY		Formation Name/Type		Deviation °		Bit Size 7.88 in	Well MD 6,615 ft	Well TVD 6,615 ft
County SEWARD		State/Province KANSAS		BHP psi	BHST 146 °F	BHCT °F	Pore Press. Gradient psi/ft	
Well Master: 0630749842		API / UWI: 15175220130000		Casing/Liner				
Rig Name MURFIN 20	Drilled For Gas	Service Via Land		Depth, ft 6610	Size, in 5.5	Weight, lb/ft 17	Grade	Thread
Offshore Zone	Well Class New	Well Type Development		Tubing/Drill Pipe				
Drilling Fluid Type Bentonite		Max. Density 9.15 lb/gal	Plastic Viscosity 18 cp	Depth,	Size, in	Weight, lb/ft	Grade	Thread
Service Line Cementing		Job Type Cem Prod Casing		Perforations/Open Hole				
Max. Allowed Tubing Pressure 2000 psi	Max. Allowed Ann. Pressure psi	WellHead Connection 5 1/2 HS&M		Top, ft	Bottom, ft	spf	No. of Shots	Total Interval ft
Service Instructions CEMENT 5½" PRODUCTION CASING : 20 BBLs CW100 200 SKS 50/50 Poz H + 2%D20 + 3% M117 + 5 PPS D42 + 5 PPS D53 + 0.25 %D112 + 0.25%D65 + 0.25%D46 DISPLACE W/ FRESH WATER 25 SKS 50/50 POZ H + ADDS FOR RAT & MOUSE				Treat Down	Displacement	Packer Type	Packer Depth ft	
				Casing	152.3 bbl			
				Tubing Vol.	Casing Vol.	Annular Vol.	OpenHole Vol bbl	
				bbl	153.4 bbl	204 bbl	358 bbl	
Casing/Tubing Secured <input type="checkbox"/>		1 Hole Volume Circulated prior to Cementing <input checked="" type="checkbox"/>		Casing Tools		Squeeze Job		
Lift Pressure: 300 psi		Pipe Rotated <input type="checkbox"/>		Pipe Reciprocated <input checked="" type="checkbox"/>		Shoe Type: Guide	Squeeze Type	
No. Centralizers:	Top Plugs: 1	Bottom Plugs: 1	Shoe Depth: 6610 ft	Tool Type:				
Cement Head Type: Single		Stage Tool Type:	Tool Depth: ft					
Job Scheduled For: 8/3/2005		Arrived on Location: 2005-Dec-12 5:00	Leave Location: 2005-Dec-12 8:50		Stage Tool Depth: ft	Tail Pipe Size: in		
		Collar Type: Auto-Fill	Tail Pipe Depth: ft					
		Collar Depth: 6566.26 ft	Sqz Total Vol: bbl					

Date	Time	Pressure	Density	SK FLOWMETER RATE	NRD VOL	CMT VOL	0		Message
							24 hr clock	psi	
2005-Dec-12	6:32	-5	8.31	0.0	0.0	0.0	0	0	
2005-Dec-12	6:33	-5	8.31	0.0	0.0	0.0	0	0	
2005-Dec-12	6:33								
2005-Dec-12	6:33	-5	8.31	0.0	0.0	0.0	0	0	Pressure Test Lines
2005-Dec-12	6:33	-5	8.30	0.0	0.0	0.0	0	0	
2005-Dec-12	6:34	-5	8.30	0.0	0.0	0.0	0	0	
2005-Dec-12	6:34	165	8.31	0.3	0.5	0.0	0	0	
2005-Dec-12	6:34	92	8.31	0.0	0.5	0.0	0	0	
2005-Dec-12	6:35	2701	8.31	0.1	0.5	0.0	0	0	
2005-Dec-12	6:35	2948	8.31	0.0	0.6	0.0	0	0	
2005-Dec-12	6:36	2866	8.31	0.0	0.6	0.0	0	0	
2005-Dec-12	6:36	46	8.31	0.0	0.6	0.0	0	0	
2005-Dec-12	6:37	50	8.31	0.0	0.6	0.0	0	0	
2005-Dec-12	6:37	339	8.31	4.2	1.5	1.0	0	0	
2005-Dec-12	6:37	325	8.31	4.3	3.3	2.6	0	0	
2005-Dec-12	6:38	320	8.31	4.4	5.1	4.2	0	0	
2005-Dec-12	6:38	316	8.31	4.2	6.8	5.9	0	0	
2005-Dec-12	6:39	302	8.31	4.1	8.6	7.5	0	0	
2005-Dec-12	6:39	302	8.30	4.3	10.3	9.1	0	0	
2005-Dec-12	6:39	307	8.30	4.3	12.1	10.7	0	0	
2005-Dec-12	6:40	293	8.29	4.1	13.8	12.4	0	0	
2005-Dec-12	6:40	311	8.30	4.2	15.6	14.0	0	0	

RECEIVED
FEB 10 2006

KCC WICHITA

CONFIDENTIAL

FEB 08 2006

KCC
Page 1 of 5

Well		Field			Service Date	Customer		Job Number	
TREGELLAS A #1		SALLEY			05346-Dec-12	OXY USA, INC.		2205560063	
Date	Time	Pressure	Density	SK FLOWMETER RATE	NRD VOL	CMT VOL	0	0	Message
	24 hr clock	psi	lb/gal	bbbl/min	bbbl	bbbl	0	0	
2005-Dec-12	6:41	307	8.30	4.3	17.3	15.6	0	0	
2005-Dec-12	6:41	302	8.30	4.1	19.1	17.3	0	0	
2005-Dec-12	6:42	87	8.30	0.0	20.5	18.5	0	0	
2005-Dec-12	6:42								Reset Total, Vol = 18.52 bbl
2005-Dec-12	6:42	64	8.30	0.3	20.6	18.5	0	0	
2005-Dec-12	6:42								Reset Total, Vol = 0.00 bbl
2005-Dec-12	6:42	64	8.30	0.3	0.0	0.0	0	0	
2005-Dec-12	6:42	55	8.30	0.1	0.0	0.0	0	0	
2005-Dec-12	6:42								Start Mixing Lead Slurry
2005-Dec-12	6:42	55	8.28	0.0	0.0	0.0	0	0	
2005-Dec-12	6:42	73	8.22	0.0	0.0	0.0	0	0	
2005-Dec-12	6:43	78	8.23	3.6	1.3	0.0	0	0	
2005-Dec-12	6:43	78	9.33	3.7	2.8	0.0	0	0	
2005-Dec-12	6:44	87	11.84	3.8	4.4	0.0	0	0	
2005-Dec-12	6:44	87	13.24	3.7	5.9	0.0	0	0	
2005-Dec-12	6:44	87	13.20	3.7	7.4	0.0	0	0	
2005-Dec-12	6:45	87	13.18	3.5	8.9	0.0	0	0	
2005-Dec-12	6:45	87	13.97	1.9	9.7	0.0	0	0	
2005-Dec-12	6:46	46	14.04	1.7	10.5	0.0	0	0	
2005-Dec-12	6:46	37	14.03	1.7	11.2	0.0	0	0	
2005-Dec-12	6:47	32	14.01	1.8	11.9	0.0	0	0	
2005-Dec-12	6:47	32	14.01	1.7	12.6	0.0	0	0	
2005-Dec-12	6:47	32	14.00	1.8	13.3	0.0	0	0	
2005-Dec-12	6:48	32	13.99	1.7	14.0	0.0	0	0	
2005-Dec-12	6:48	32	13.99	1.9	14.7	0.0	0	0	
2005-Dec-12	6:49	32	13.96	1.8	15.5	0.0	0	0	
2005-Dec-12	6:49	137	13.97	2.0	16.4	0.2	0	0	
2005-Dec-12	6:50	114	13.95	2.1	17.2	0.5	0	0	
2005-Dec-12	6:50	114	13.94	2.1	18.1	0.8	0	0	
2005-Dec-12	6:50	110	13.89	2.1	19.0	1.1	0	0	
2005-Dec-12	6:51	27	7.13	2.7	19.3	1.2	0	0	
2005-Dec-12	6:51	18	1.40	2.0	19.9	1.2	0	0	
2005-Dec-12	6:52	14	1.51	5.7	20.6	1.2	0	0	
2005-Dec-12	6:52	14	9.21	0.7	24.8	1.2	0	0	
2005-Dec-12	6:52	23	9.39	0.3	25.1	1.2	0	0	
2005-Dec-12	6:53	23	12.03	0.6	25.2	1.2	0	0	
2005-Dec-12	6:53	23	14.11	0.4	25.4	1.2	0	0	
2005-Dec-12	6:54	23	14.31	0.4	25.6	1.2	0	0	
2005-Dec-12	6:54	23	14.24	0.4	25.7	1.2	0	0	
2005-Dec-12	6:55	18	14.24	0.4	25.9	1.2	0	0	
2005-Dec-12	6:55	18	14.27	0.0	26.0	1.2	0	0	
2005-Dec-12	6:55	18	14.27	0.0	26.0	1.2	0	0	
2005-Dec-12	6:56	60	14.23	2.1	26.2	1.2	0	0	
2005-Dec-12	6:56	64	14.23	2.1	27.1	1.6	0	0	
2005-Dec-12	6:57	64	14.22	2.2	28.0	1.9	0	0	
2005-Dec-12	6:57	60	14.19	2.0	28.9	2.2	0	0	
2005-Dec-12	6:57	18	13.14	0.0	29.5	2.4	0	0	
2005-Dec-12	6:58	18	1.23	2.6	29.9	2.4	0	0	
2005-Dec-12	6:58	23	0.99	2.0	31.2	2.4	0	0	
2005-Dec-12	6:59	18	1.01	2.5	32.1	2.4	0	0	
2005-Dec-12	6:59	23	1.01	3.6	33.4	2.4	0	0	
2005-Dec-12	7:00	23	1.02	1.8	34.4	2.4	0	0	
2005-Dec-12	7:00								Reset Total, Vol = 7 bbl
2005-Dec-12	7:00	23	1.02	4.4	35.8	2.4	0	0	

RECEIVED
FEB 10 2006

KCC WICHITA

CONFIDENTIAL

FEB 08 2006

KCC

RECEIVED
FEB 10 2006
KCC WICHITA

CONFIDENTIAL
FEB 08 2006
KCC

Well		Field			Service Date	Customer		Job Number	
TREGELLAS A #1		SALLEY			05346-Dec-12	OXY USA, INC.		2205550068	
Date	Time	Pressure	Density	SK FLOWMETER RATE	NRD VOL	CMT VOL	0	0	Message
	24 hr clock	psi	lb/gal	bbl/min	bbl	bbl	0	0	
2005-Dec-12	7:00	23	1.03	1.6	0.2	0.0	0	0	
2005-Dec-12	7:00	23	1.03	4.7	1.1	0.0	0	0	
2005-Dec-12	7:01	32	1.03	1.4	2.5	0.0	0	0	
2005-Dec-12	7:01	27	1.85	3.3	3.7	0.0	0	0	
2005-Dec-12	7:02	27	6.94	0.0	4.3	0.0	0	0	
2005-Dec-12	7:02	27	9.99	0.0	4.4	0.0	0	0	
2005-Dec-12	7:02	389	10.85	3.4	4.5	0.2	0	0	
2005-Dec-12	7:03	366	13.44	3.7	6.0	1.8	0	0	
2005-Dec-12	7:03	293	13.67	3.5	7.5	3.4	0	0	
2005-Dec-12	7:04	284	14.17	4.7	9.1	5.3	0	0	
2005-Dec-12	7:04	307	14.11	3.7	10.8	7.1	0	0	
2005-Dec-12	7:05	266	13.89	3.7	12.4	8.7	0	0	
2005-Dec-12	7:05	288	13.79	3.7	13.9	10.3	0	0	
2005-Dec-12	7:05	243	13.93	3.8	15.5	12.0	0	0	
2005-Dec-12	7:06	243	13.88	3.8	17.1	13.6	0	0	
2005-Dec-12	7:06	224	14.07	3.8	18.7	15.2	0	0	
2005-Dec-12	7:07	160	13.84	3.8	20.3	16.9	0	0	
2005-Dec-12	7:07	220	14.02	3.9	21.9	18.6	0	0	
2005-Dec-12	7:07	215	13.97	3.7	23.4	20.2	0	0	
2005-Dec-12	7:08	179	13.97	3.6	25.0	21.8	0	0	
2005-Dec-12	7:08	174	13.55	3.9	26.6	23.5	0	0	
2005-Dec-12	7:09	201	13.86	3.9	28.2	25.1	0	0	
2005-Dec-12	7:09	192	13.85	3.7	29.7	26.7	0	0	
2005-Dec-12	7:10	160	14.06	3.6	31.3	28.3	0	0	
2005-Dec-12	7:10	215	14.03	3.6	32.8	30.0	0	0	
2005-Dec-12	7:10	156	13.94	3.7	34.4	31.6	0	0	
2005-Dec-12	7:11	156	14.17	3.8	36.0	33.2	0	0	
2005-Dec-12	7:11	156	14.39	3.6	37.5	34.9	0	0	
2005-Dec-12	7:12	183	13.86	3.8	39.1	36.5	0	0	
2005-Dec-12	7:12	201	13.44	3.5	40.6	38.1	0	0	
2005-Dec-12	7:12	169	13.71	3.8	42.1	39.8	0	0	
2005-Dec-12	7:13	165	13.88	3.8	43.7	41.4	0	0	
2005-Dec-12	7:13	211	14.02	3.9	45.2	43.0	0	0	
2005-Dec-12	7:14	165	14.03	3.7	46.8	44.6	0	0	
2005-Dec-12	7:14	146	14.10	3.6	48.4	46.3	0	0	
2005-Dec-12	7:15	206	14.01	3.8	49.9	47.9	0	0	
2005-Dec-12	7:15	179	14.20	3.8	51.5	49.5	0	0	
2005-Dec-12	7:15	137	14.33	3.7	53.0	51.2	0	0	
2005-Dec-12	7:16	174	14.11	3.8	54.6	52.8	0	0	
2005-Dec-12	7:16	124	13.91	2.6	56.0	54.2	0	0	
2005-Dec-12	7:17	151	13.31	3.0	57.2	55.2	0	0	
2005-Dec-12	7:17								Reset Total, Vol = 55.76 bbl
2005-Dec-12	7:17	64	12.61	0.5	58.0	55.8	0	0	
2005-Dec-12	7:17	55	12.53	0.4	0.0	0.0	0	0	
2005-Dec-12	7:17								wash up lines
2005-Dec-12	7:17	50	12.50	0.4	0.1	0.0	0	0	
2005-Dec-12	7:17	41	12.27	0.2	0.2	0.0	0	0	
2005-Dec-12	7:18	32	12.17	0.1	0.2	0.0	0	0	
2005-Dec-12	7:18	27	12.01	0.4	0.3	0.0	0	0	
2005-Dec-12	7:19	32	11.98	0.0	0.4	0.0	0	0	
2005-Dec-12	7:19	55	11.98	1.3	0.5	0.0	0	0	Drop Top Plug
2005-Dec-12	7:20	412	9.10	6.3	2.2	0.0	0	0	
2005-Dec-12	7:20	499	8.36	7.1	5.2	0.0	0	0	
2005-Dec-12	7:20	522	8.10	7.8	8.2	0.0	0	0	

RECEIVED
FEB 10 2006

KCC WICHITA

CONFIDENTIAL
FEB 08 2006

KCC

Well		Field			Service Date		Customer		Job Number
TREGELLAS A #1		SALLEY			05346-Dec-12		OXY USA, INC.		2205550065
Date	Time	Pressure	Density	SK FLOWMETER RATE	NRD VOL	CMT VOL	0	0	Message
	24 hr clock	psi	lb/gal	bbl/min	bbl	bbl	0	0	
2005-Dec-12	7:21	481	8.25	7.7	11.3	0.0	0	0	
2005-Dec-12	7:21	595	8.28	0.3	14.3	0.0	0	0	
2005-Dec-12	7:22	69	8.29	0.0	14.4	0.0	0	0	
2005-Dec-12	7:22	50	8.30	0.0	14.4	0.0	0	0	
2005-Dec-12	7:22	46	8.30	0.0	14.4	0.0	0	0	
2005-Dec-12	7:23	124	8.27	2.8	14.7	0.3	0	0	
2005-Dec-12	7:23	201	8.30	6.8	17.3	2.9	0	0	
2005-Dec-12	7:24	197	8.30	6.7	20.1	5.7	0	0	
2005-Dec-12	7:24	206	8.29	6.6	22.9	8.5	0	0	
2005-Dec-12	7:25	197	8.29	6.7	25.7	11.2	0	0	
2005-Dec-12	7:25	192	8.30	6.7	28.6	14.1	0	0	
2005-Dec-12	7:25	211	8.29	6.8	31.4	16.8	0	0	
2005-Dec-12	7:26	206	8.29	6.7	34.2	19.6	0	0	
2005-Dec-12	7:26	192	8.29	6.7	37.0	22.3	0	0	
2005-Dec-12	7:27	197	8.30	6.7	39.8	25.1	0	0	
2005-Dec-12	7:27	197	8.28	6.7	42.6	27.8	0	0	
2005-Dec-12	7:27	192	8.28	6.6	45.4	30.6	0	0	
2005-Dec-12	7:28	183	8.29	6.8	48.2	33.4	0	0	
2005-Dec-12	7:28	183	8.25	0.1	48.7	36.1	0	0	
2005-Dec-12	7:29	183	8.28	0.4	48.8	38.9	0	0	
2005-Dec-12	7:29	220	8.29	0.3	49.0	41.6	0	0	
2005-Dec-12	7:30	220	8.29	0.4	49.1	44.9	0	0	
2005-Dec-12	7:30	243	8.30	0.4	49.2	48.2	0	0	
2005-Dec-12	7:30	243	8.28	0.4	49.3	51.4	0	0	
2005-Dec-12	7:31	233	8.28	0.3	49.5	54.7	0	0	
2005-Dec-12	7:31	243	8.28	0.3	49.6	58.0	0	0	
2005-Dec-12	7:32	243	8.29	0.3	49.7	61.3	0	0	
2005-Dec-12	7:32	256	8.28	7.9	51.0	64.5	0	0	
2005-Dec-12	7:32	238	8.27	7.7	54.2	67.8	0	0	
2005-Dec-12	7:33	238	8.25	7.7	57.4	71.1	0	0	
2005-Dec-12	7:33	183	8.29	6.6	60.3	74.0	0	0	
2005-Dec-12	7:34	183	8.29	6.8	63.1	76.8	0	0	
2005-Dec-12	7:34	174	8.29	6.7	65.9	79.5	0	0	
2005-Dec-12	7:35	188	8.29	6.7	68.7	82.3	0	0	
2005-Dec-12	7:35	179	8.29	6.8	71.5	85.0	0	0	
2005-Dec-12	7:35	179	8.30	6.7	74.3	87.8	0	0	
2005-Dec-12	7:36	188	8.27	6.5	77.0	90.5	0	0	
2005-Dec-12	7:36	188	8.29	6.6	79.8	93.3	0	0	
2005-Dec-12	7:37	179	8.29	6.6	82.5	96.1	0	0	
2005-Dec-12	7:37	577	8.29	6.6	85.3	98.8	0	0	
2005-Dec-12	7:37	183	8.29	6.6	88.1	101.5	0	0	
2005-Dec-12	7:38	238	8.28	7.7	91.0	104.5	0	0	
2005-Dec-12	7:38	224	8.26	7.7	94.2	107.8	0	0	
2005-Dec-12	7:39	220	8.26	7.5	97.4	111.0	0	0	
2005-Dec-12	7:39	233	8.28	6.4	100.4	114.2	0	0	
2005-Dec-12	7:39	311	8.29	6.6	102.4	116.2	0	0	
2005-Dec-12	7:39								Start Lifting cement
2005-Dec-12	7:40	330	8.30	6.6	103.2	117.0	0	0	
2005-Dec-12	7:40	366	8.30	6.6	105.9	119.7	0	0	
2005-Dec-12	7:40	412	8.29	6.6	108.6	122.5	0	0	
2005-Dec-12	7:41	471	8.29	6.6	111.4	125.2	0	0	
2005-Dec-12	7:41	531	8.30	6.6	114.1	128.0	0	0	
2005-Dec-12	7:42	572	8.29	6.5	116.9	130.8	0	0	
2005-Dec-12	7:42	613	8.28	6.6	119.5	133.5	0	0	

RECEIVED
FEB 10 2006
KCC WICHITA
CONFIDENTIAL
FEB 08 2006
KCC

Well		Field			Service Date		Customer		Job Number		
TREGELLAS A #1		SALLEY			05348-Dec-12		OXY USA, INC.		2205550083		
Date	Time	Pressure	Density	SK FLOWMETER RATE	NRD VOL	CMT VOL	0	0	Message		
	24 hr. clock	psi	lb/gal	bbl/min	bbl	bbl	0	0			
2005-Dec-12	7:42	655	8.30	6.7	122.4	136.4	0	0			
2005-Dec-12	7:43	691	8.30	6.7	125.2	139.1	0	0			
2005-Dec-12	7:43	723	8.29	6.5	127.9	141.9	0	0			
2005-Dec-12	7:44	819	8.30	6.4	130.6	144.6	0	0			
2005-Dec-12	7:44	604	8.29	2.6	132.7	146.6	0	0			
2005-Dec-12	7:45	609	8.29	2.7	133.8	147.7	0	0			
2005-Dec-12	7:45	636	8.30	2.6	134.9	148.9	0	0			
2005-Dec-12	7:45	668	8.30	2.7	136.0	150.0	0	0			
2005-Dec-12	7:46	691	8.30	2.7	137.1	151.1	0	0			
2005-Dec-12	7:46	719	8.30	2.6	138.2	152.2	0	0			
2005-Dec-12	7:47	732	8.29	2.6	139.3	153.3	0	0			
2005-Dec-12	7:47	755	8.30	2.7	140.4	154.5	0	0			
2005-Dec-12	7:47	984	8.30	2.6	141.4	155.6	0	0			
2005-Dec-12	7:48	1309	8.30	0.0	141.7	155.8	0	0			
2005-Dec-12	7:48								Reset Total, Vol = 155.81 bbl		
2005-Dec-12	7:48	1227	8.30	0.0	0.0	0.0	0	0			
2005-Dec-12	7:48	1263	8.30	0.0	0.0	0.0	0	0			
2005-Dec-12	7:48								Bump Top Plug		
2005-Dec-12	7:48	1250	8.31	0.0	0.0	0.0	0	0			
2005-Dec-12	7:48	1277	8.31	0.0	0.0	0.0	0	0			
2005-Dec-12	7:48								Bleed Off Pressure		
2005-Dec-12	7:49	774	8.31	0.0	0.0	0.0	0	0			
2005-Dec-12	7:49	64	8.31	0.0	0.0	0.0	0	0			
2005-Dec-12	7:50	46	8.30	0.0	0.0	0.0	0	0			
2005-Dec-12	7:50	50	8.31	0.0	0.0	0.0	0	0			
2005-Dec-12	7:50								End Job		
2005-Dec-12	7:50	50	8.31	0.0	0.0	0.0	0	0			
Post Job Summary											
Average Pump Rates, bpm					Volume of Fluid Injected, bbl						
Slurry	N2		Mud	Maximum Rate	Total Slurry	Mud	Spacer	N2			
5.5				8	62		20				
Treating Pressure Summary, psi					Breakdown Fluid						
Maximum	Final	Average		Bump Plug to	Breakdown	Volume		Density			
764		192		1300		bbl		8.34 lb/gal			
Avg. N2 Percent		Designed Slurry Volume		Displacement	Mix Water Temp	Cement Circulated to Surface? Volume		bbl			
%		55 bbl		bbl	°F	Washed Thru Perfs To		ft			
Customer or Authorized Representative				Schlumberger Supervisor				CirculationLost		Job Completed	
Willimon, Wes				Grella Chacon, Miguel				<input type="checkbox"/>		<input checked="" type="checkbox"/>	

RECEIVED
FEB 10 2006
KCC WICHITA

CONFIDENTIAL
FEB 08 2006

Date	12/12/05
Company	Oxy USA
Job Number	2205550063
Well Name	Tregellas
Well Number	A-1
County	Seward
State	KS

Schlumberger

Pipe Size	5 1/2	
Pipe Weight	17	17
Pipe Depth	6610	
Shoe Length	43.74	1.01
Insert Depth	6566.26	
Hole Size	7 7/8	
Hole Depth	6615	

1st System	
25 sacks	50/50 Poz H
1.55 yield	2%D20 + 3% M117 + 5 PPS D42+5 PPS
13.8 weight	358
7.1 water	4.23
cubic ft.	38.8
height	223
bbls	6.9

Pipe Volume	153.4
Annular Volume	204
Total Cement	62
Total Water	190

Pipe Factor	0.0232	0.0232
Annular Factor	0.0309	check
Height Factor	5.7639	

2nd System	
200 sacks	50/50 Poz H
1.55 yield	2%D20 + 3% M117 + 5 PPS D42+5 PPS D53+ 0.25
13.8 weight	
7.1 water	34
cubic ft.	310
height	1787
bbls	55.2

Casing lift
Cement lift 808

3rd System	
sacks	
yield	
weight	
water	0
cubic ft.	0
height	0
bbls	0

Test 2500 RECEIVED
FEB 10 2006

20 CW100

KCC WICHITA

Rat & Mouse 7 Lead 13.8
55 Tail 13.8

4th System	
sacks	
yield	
weight	
water	0
cubic ft.	0
height	0
bbls	0

152.3 Displacement
Fresh Water 152.3
Mud 0

Mud density 9.15
PV

Pump Time @ 5.5 BPM 39 MIN

CONFIDENTIAL
FEB 08 2006