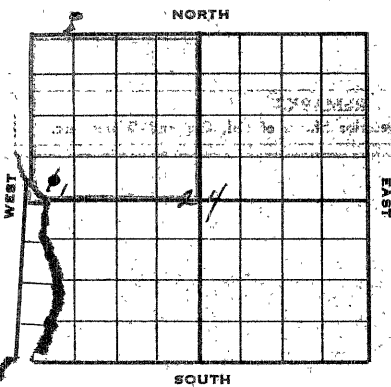


SKELLY OIL COMPANY



Well Record

Lease Name and No. **J. S. Thymall 27287** Well No. **1** Elev. **2154'**
 Lease Description **1/4 of Section 24-28-19E, Rock County, Kansas**

Location made **June 1, 1948** by **E. L. Tompkins**
 feet from North line **330** feet from East line **330**
 feet from South line **675** feet from West line **675**

Work com'd **6/4 1948** Rig com'd **6/5 1948** Drlg. com'd **6/5 1948** Drlg. comp'd **6/15 1948**
 Rig Contractor **Claude Anstworth Drilling Company**
 Drilling Contractor **Claude Anstworth Drilling Company, Tulsa, Oklahoma**
 Rotary Drilling from **Top** to **3622'** Cable Tool Drilling from _____ to _____

Commenced Producing **DRY HOLE** 19 _____
 Initial Prod. before shot or acid _____
 Initial Prod. after shot or acid _____

Dry Gas Well Press _____ Volume _____
 Casing Head Gas Pressure _____ Volume _____
 Braden Head (**3-5/8** Size) Gas Pressure _____ Volume _____
 Braden Head (_____ Size) Gas Pressure _____ Volume _____

PRODUCING FORMATION **DRY HOLE** (Name) Top _____ Bottom _____ TOTAL DEPTH **3622'**

CASING RECORD

OD Size	Wt.	Thds.	Where Set	PULLED OUT			LEFT IN			KIND	Cond'n	Sacks Used	CEMENTING Method Employed
				Jts.	Feet	In.	Jts.	Feet	In.				
8-5/8"	28#	8H	1455'	22	600	2	25	754	10	240	52	150	Millinerton
(8-5/8" casing out 3' in collar)													

Liner Set at _____ Length _____ Perforated at _____
 Liner Set at _____ Length _____ Perforated at _____
 Packer Set at _____ Size and Kind _____
 Packer Set at _____ Size and Kind _____

SHOT OR ACID TREATMENT RECORD

Date	Acid Used Size Shot	Shot Between	Size of Shell	Put in by (Co.)	Length anchor	Distance below Cas'g	Damage to Casing or Casing Shoulder	FIRST	SECOND	THIRD	FOURTH
								Ft. and	Gals. Qts.	Ft.	Gals. Qts.

SIGNIFICANT GEOLOGICAL FORMATIONS

NAME	Top	Bottom	GAS		OIL		REMARKS
			From	To	From	To	
Landing Line	3343'				3343	3350	Spotted por., 4 strata
					3352'	3353	Good por., fair oil
Conglomerate	3383'						all. sh.
Arbuckle Line	3603'				3603	3612'	Air por., 4 slight stal

CLEANING OUT RECORDS

	DATE COMMENCED	DATE COMPLETED	PROD. BEFORE	PROD. AFTER	REMARKS
1st					
2nd					
3rd					
4th					

PLUGGING BACK AND DEEPENING RECORDS

	Date Commenced	Date Completed	No. Feet Plugged Back or Deepened	Prod. Before	Prod. After	REMARKS
1st						
2nd						
3rd						
4th						

(See Reverse for Record of Formation)

RECORD OF FORMATIONS

FORMATION	TOP	BOTTOM	REMARKS
Surface soil, sand and clay	0	45	
sand	45	130	
sand and shale	130	205	
shale and shells	205	1080	
and	1180	1260	
red bed and shells	1260	1410	
shale	1410	1425	
sand and pyrites of iron	1425	1450	
pyrites of iron, lime and shale	1450	1460	Set and cemented 2-5/8" casing at 1450', Dr. 344, A.S.S. and Pittsburgh, S.S. 2-40, 2-2 casing at 1450' with 135 sacks of cement and 3 sacks of aquagal.
shaly limestone	1460	1542	
and sand shale	1542	1680	
shale and shells	1680	1970	
silt	1970	2055	
lime and shale	2055	2700	
lime	2700	2780	
shale	2780	2870	
shale and lime	2870	2995	
lime	2995	3290	
lime and shale	3290	3330	
lime	3330	3345	TOP LAMING LINE 3345'
gray and brown lime	3345	3350	Spotted porosity and stain
lime	3350	3351	
gray and brown lime	3351	3355	Spotted porosity and stain
lime	3355	3370	
lime and shale	3370	3440	
lime	3440	3512	
gray and brown lime	3512	3515	Good porosity, fair stain and slight odor
lime	3515	3519	Ran Halliburton drill stem test with packer set at 3491', open 1 hour, recovered 240' of water with show of rotary mud.
lime	3519	3575	
lime and shale	3575	3595	END CONCRETE AT 3595'
conglomerate	3595	3605	TOP SANDSTONE LIME LAYER
gray and brown dolomite	3605	3612	Fair porosity and slight stain

CRACKS IN PRESENT CEMENT

Very finely crystalline dolomite	3612	3615	No porosity or saturation, medium hard
Very soft coarsely crystalline dolomite	3615	3622	Porous, probable water
total depth		3622'	

Since the well did not show commercial oil or gas production in drilling to 3622', regular authority was granted on June 17, 1948, to plug the hole and abandon the location.

On June 20, plugged the hole, as follows:

20 sacks of cement	3622' to 3627'
and laden fluid	3627' to 1430'
20 sacks of cement	1430' to 1435'
shot off and pulled 480'	
of 2-5/8" casing	
and laden fluid	PLUGGING 1435' to 1480'
20 sacks of cement	1480' to 1500'
and laden fluid	1500' to 1505'
60 sacks of cement	1505' to 1510'
surface soil	1510' to 0'

Plugged and abandoned 6/22/48

DEPTH	TEMPERATURE	TEMPERATURE	TEMPERATURE
275'	0 degrees		
300'	1/2		
330'	1/2		
1000'	1/2		
1435'	1/2		
1505'	1/2		
1510'	1/2		
1515'	0		
1520'	0		
1525'	0		