

TO: STATE CORPORATION COMMISSION
CONSERVATION DIVISION - PLUGGING
130 SOUTH MARKET, SUITE 2078
WICHITA, KANSAS 67202

API Well Number: 15-073-23182-00-00
Spot: N2SE Sec/Twnshp/Rge: 9-25S-13E
1960 feet from S Section Line, 1320 feet from E Section Line
Lease Name: WEBBER Well #: W-10
County: GREENWOOD Total Vertical Depth: 1536 feet

Operator License No.: 5370
Op Name: SOULE, RICHARD A.
Address: 822 E RIVER
EUREKA, KS 67045

49-92

Well Type: OIL UIC Docket No: _____ Date/Time to Plug: 08/30/2007 8:00 AM
Plug Co. License No.: 33961 Plug Co. Name: CONSOLIDATED OIL WELL SERVICES LLC
Proposal Rcvd. from: _____ Company: _____ Phone: _____

Proposed Plugging Method: 50' cement plug @ 1500' 50' cement plug @ 700' 250' cement plug to surface

Plugging Proposal Received By: MICHAEL HEFFERN WitnessType: COMPLETE (100%)
Date/Time Plugging Completed: 08/30/2007 11:00 AM KCC Agent: MICHAEL HEFFERN

Actual Plugging Report:

Perfs:

ran tubing to 1500' pumped 15 sxs cement, pulled tubing to 700' pumped 10 sxs cement, pulled tubing to 150' pumped 20 sxs cement to surface. gel spacers between cement plugs.

RECEIVED
KCC DISTRICT #3

SEP 10 2007

CHANUTE, KS

MH

INVOICED
DATE 9/20/07
INV. NO. 2008060440

Remarks:

Plugged through: TBG

District: 03

Signed Mike Heffern
(TECHNICIAN)

RECEIVED
Form CP-2/3
KANSAS CORPORATION COMMISSION

SEP 14 2007

CONSERVATION DIVISION
WICHITA, KS

PH

SEP 14 2007

CONSERVATION DIVISION
WICHITA, KS

RT

State of Kansas

S.C. 6-8-84

*40'
7"*

NOTICE OF INTENTION TO DRILL

Starting date 6 11 84
Month Day Year

API Number 15-073-23,182

Operator license # 5596

C N/2 SE Sec, Sec 9, T 25 S, R 13 East
~~XXX~~

Operator name & address
Bird & Hanley
R.1, Box 82
Toronto, Ks. 66777

1960 ft. from ~~XX~~ S line of section
1320 ft. from ~~XX~~ E line of section

Contact person Bob Hays

Nearest lease or unit boundary line 660 feet

Phone 316 637/2340

County Greenwood

Contractor license # 5913

Lease name Webber Well # W-10

Contractor name & address
Alco Drlg. Co.
R.3
Iola, Ks. 66749

Surface pipe by alternate 1 _____ or 2 X
Domestic well within 330 ft. X yes; Municipal well within one mile _____ yes
no; X no

Type equipment: rotary X air _____ cable _____

Depth of fresh water 25 feet
Lowest usable water formation Quaternary

Well drilled for: oil _____ gas _____ SWD _____

Depth to bottom of usable water 150 225 feet
Surface pipe to be set 40 feet

Inj X OWWO _____

Conductor pipe if any required None feet
Ground surface elevation 1005 feet MSL

Well class: infield X pool ext _____ wildcat _____

Est. total depth 1500 feet
Into solid formation not less than 40 ft

I certify that we will comply with K.S.A. 55-101, et seq., plus eventually plugging hole to KCC specs.
Date 5/25/84 Signature of operator or agent C. E. Smith Title Mgr.

THIS PERMIT
NOV 23 1984
EXPIRES

Date received 5-29-84

To be filed with Kansas Corporation Commission
5 days prior to commencing well.
Card to be typed

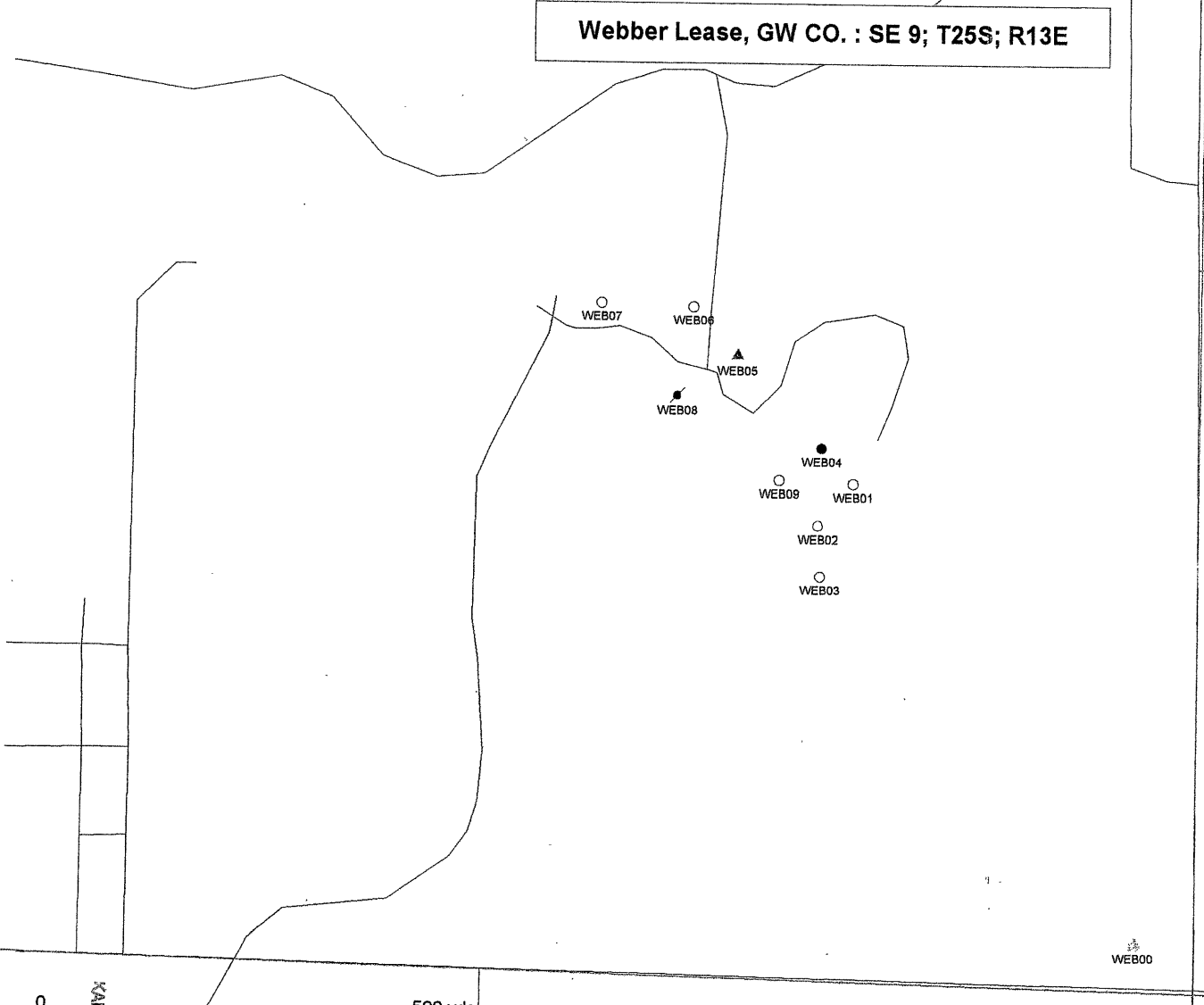
MHC/KDHE 5-29-84 form C-1

Webber Lease, GW CO. : SE 9; T25S; R13E



Legend

- Oil Well - Active
- Oil Well - Abandoned
- ⊗ Oil Well - Plug New
- ⊘ Oil Well - Plug Old
- ⊖ Oil Well - Temp. Abandoned
- ▲ Injection Well - Active
- △ Injection Well - Abandoned
- ⊗ Injection Well - Plug New
- ⊘ Injection Well - Plug Old
- △ Injection Well - Temp. Abandoned
- ⊖ Tank Battery
- ⊗ Possible Well Location
- Gas Well-Active
- Gas Well-Aband.
- ⊗ Gas-Plug New
- ⊗ Water Supply Well
- Emergency Pit
- ⊖ Storage Pond
- ☆ Water Sample Loc.
- Pump House
- Test Hole



Compiled 11/05/98

RECEIVED
 KANSAS CORPORATION COMMISSION
 SEP 14 2007
 CONSERVATION DIVISION
 WICHITA, KS

PKT

Webber Lease

<u>Session Pt.</u>	<u>Attribute</u>	<u>Section</u>	<u>Twnshp</u>	<u>Range</u>	<u>FSL</u>	<u>FEL</u>	<u>County</u>	<u>Casing, etc.</u>
WEB00	TANK.BATTERY	9	25	13	188	227	GW	2TNK.1GNBRL
WEB01	OIL-AB-S-P	9	25	13	1844	1297 #14	GW	4.5CAS.RD+TB
WEB02	OIL-AB-S-P	9	25	13	1691	1427 #15	GW	4.5CAS.RD+TB
WEB03	OIL-AB	9	25	13	1506	1415 #16	GW	5.5CAS.
WEB04	OIL-AC-S-P	9	25	13	1978	1416 #10	GW	4.5CAS.RD+TB
WEB05 ✓	INJ-AC-S-P	9	25	13	2307	1736 #18	GW	4.5CAS.RD+TB
WEB06	OIL-AB-S-P	9	25	13	2481	1903 #19	GW	4.5CAS.RD+TB
WEB07	OIL-AB-S-P	9	25	13	2492	2243 #20	GW	4.5CAS.RD+TB
WEB08	OIL-PO	9	25	13	2164	1957	GW	
WEB09	OIL-AB-S-P	9	25	13	1856	1572 #15	GW	4.5CAS.RD+TB


 RECEIVED
 KANSAS CORPORATION COMMISSION

SEP 14 2007

CONSERVATION DIVISION
 WICHITA, KS