

DISTRICT CONSERVATION AGENT'S REPORT

TO:

State Corporation Commission
Conservation Division
800 Bitting Building
Wichita, Kansas

15-163-01118-00-00

FILE NO. _____

LOCATION NW NW SWSEC. 11 TWP. 10 RGE. 18 WDry Hole X Abandoned Oil Well _____ Abandoned Gas Well _____

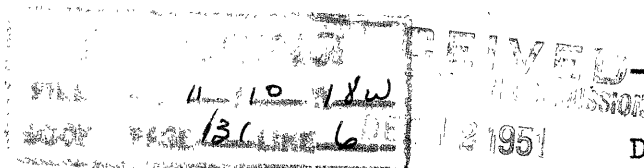
I have today completed supervision of plugging of:

Well No. 1 Lease MalinOperator Murfin Drg Co Address Wichita, KansField _____ County RooksTotal Depth 5780 Feet.

(Describe briefly the manner in which the well was plugged)

8 5/8" at 120' circulated with cement.

Filled with heavy mud to 120', set cementing plug, 1/2 sack
hulls and 10 sax cement, filled with mud to 40', set
cementing plug, 1/2 sack hulls and 10 sax cement to
bottom cellar.



District Conservation Agent

Date 12-7-51

DIVISION

12-12-1951