

STATE CORPORATION COMMISSION OF KANSAS
OIL & GAS CONSERVATION DIVISION

WELL COMPLETION OR RECOMPLETION FORM
ACO-1 WELL HISTORY

DESCRIPTION OF WELL AND LEASE

Operator: license # 6278
name PETX Petroleum Corporation
address 1616 Glenarm Place, Suite 1700
City/State/Zip Denver, CO 80202

Operator Contact Person Robert E. Johnson
Phone (303) 629-1098

Contractor: license # 6033
name Murfin Drilling Company

Wellsite Geologist Kathryn Rogers
Phone 316-265-6431

PURCHASER

Designate Type of Completion
 New Well Re-Entry Workover

- Oil SWD Temp Abd
- Gas Inj Delayed Comp
- Dry Other (Core, Water Supply etc.)

If OWWO: old well info as follows:
Operator
Well Name
Comp. Date Old Total Depth

WELL HISTORY

Drilling Method: Mud Rotary Air Rotary Cable
2/1/85 2/22/85 2/22/85
Spud Date Date Reached TD Completion Date
3780
Total Depth PBD

Amount of Surface Pipe Set and Cemented at 305 feet
Multiple Stage Cementing Collar Used? Yes No
If Yes, Show Depth Set feet

If alternate 2 completion, cement circulated
from 305 feet depth to surface w/ 225 SX cmt

API NO. 15- 065-22,054 -00-00
County Graham
SE SE SE Sec 14 Twp 8S Rge 22 East West

330 Ft North from Southeast Corner of Section
330 Ft West from Southeast Corner of Section
(Note: locate well in section plat below)

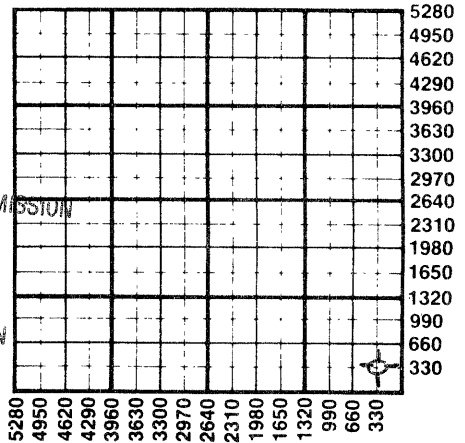
Lease Name Faulkner Well# 1

Field Name Wildcat

Producing Formation

Elevation: Ground 2118 KB 2123

Section Plat



5-13-85

RECEIVED
STATE CORPORATION COMMISSION
MAY 13 1985
CONSERVATION DIVISION
Wichita, Kansas

WATER SUPPLY INFORMATION

Source of Water:
Division of Water Resources Permit #
 Groundwater Ft North From Southeast Corner and Ft. West From Southeast Corner of Sec Twp Rge East West
 Surface Water Ft North From Southeast Corner and (Stream, Pond etc.) Ft West From Southeast Corner Sec Twp Rge East West
 Other (explain) Murfin hauled from city of Bogue & Lyle purchased from city, R.W.D.# Billips

Disposition of Produced Water: Disposal Repressuring
Docket #

INSTRUCTIONS: This form shall be completed in duplicate and filed with the Kansas Corporation Commission, 200 Colorado Derby Building, Wichita, Kansas 67202, within 90 days after completion or recompletion of any well. Rules 82-3-130 and 82-3-107 apply.
Information on side two of this form will be held confidential for a period of 12 months if requested in writing and submitted with the form. See rule 82-3-107 for confidentiality in excess of 12 months.
One copy of all wireline logs and drillers time log shall be attached with this form. Submit CP-4 form with all plugged wells. Submit CP-111 form with all temporarily abandoned wells.

All requirements of the statutes, rules, and regulations promulgated to regulate the oil and gas industry have been fully complied with and the statements herein are complete and correct to the best of my knowledge.

Signature Robert E. Johnson
Title President Date 5/10/85

Subscribed and sworn to before me this 10th day of May 19 85.

Notary Public
Date Commission Expires 7/7/87
7821 McCella Ct.
Westminster, CO 80030
(303) 427-3901

K.C.C. OFFICE USE ONLY
F Letter of Confidentiality Attached
C Wireline Log Received
C Drillers Timelog Received
Distribution
 KCC SWD/Rep NGPA
 KGS Plug Other (Specify)

Sec. 14 Twp. 8S Rge. 22W

Operator Name PETX Petroleum Corp. Lease Name Faulkner Well# 1 SEC. 14 TWP. 8S RGE. 22 East West

WELL LOG

INSTRUCTIONS: Show important tops and base of formations penetrated. Detail all cores. Report all drill stem tests giving interval tested, time tool open and closed, flowing and shut-in pressures, whether shut-in pressure reached static level, hydrostatic pressures, bottom hole temperature, fluid recovery, and flow rates if gas to surface during test. Attach extra sheet if more space is needed. Attach copy of log.

Drill Stem Tests Taken Yes No
 Samples Sent to Geological Survey Yes No
 Cores Taken Yes No

Formation Description
 Log Sample

See attached geologist's report

Name _____ Top _____ Bottom _____
 See attached geologist's report

CASING RECORD <input type="checkbox"/> new <input type="checkbox"/> used Report all strings set - conductor, surface, intermediate, production, etc.							
Purpose of string	size hole drilled	size casing set (in O.D.)	weight lbs/ft.	setting depth	type of cement	# sacks used	type and percent additives
Surface	1.2 1/4"	8.5/8"	24	305	60/40 poz	225	3%cc, 2%gel

shots per foot	specify footage of each interval perforated

PERFORATION RECORD specify footage of each interval perforated		Acid, Fracture, Shot, Cement Squeeze Record (amount and kind of material used)	
Depth			

TUBING RECORD size set at packer at			Liner Run <input type="checkbox"/> Yes <input type="checkbox"/> No	
Date of First Production	Producing method <input type="checkbox"/> flowing <input type="checkbox"/> pumping <input type="checkbox"/> gas lift <input type="checkbox"/> Other (explain)			
Estimated Production Per 24 Hours	Oil Bbls	Gas MCF	Water Bbls	Gas-Oil Ratio CFPB

Disposition of gas: vented
 sold
 used on lease

METHOD OF COMPLETION
 open hole perforation
 other (specify) _____
 Dually Completed.
 Commingled

PRODUCTION INTERVAL

COMPANY Petex Petroleum

MCLEOD EXPLOR
(GEOLOGIST)
205 W 2nd SUITE 18
WICHITA, KS. 67202

WELL # JFaulkner

ELEVATIONS COMPLETED AS

SEC. 14 TWP. 8S RGE. 22W

K.B. 2123 OIL GAS

LOCATION SE-SE-SE

D.F. GL 2118 DRY X SWDW

FIELD Wildcat

MEASUREMENTS FROM KB

COUNTY Graham

CASING RECORD R 5/8 @ 305

STATE KANSAS

CONTRACTOR MURKIN

RIG NO 7

COMMENCED 2-15-85

COMPLETED 2-22-85

ELECTRICAL LOG G.R. Neutron-Guard w/ CAL

MUD Mud Co Chem

DRILL STEM TESTS 4 DST'S - Western Testing

MUD LOGGING UNIT _____

CORES _____ ANALYSIS _____

SAMPLES FROM 3150 TO TD SUPERVISION FROM 3350 TO TD

ROTARY TOTAL DEPTH 3780 LOG TOTAL DEPTH 3781

REMARKS Well Site Geologist KATHRYN ROGERS

FORMATION	SAMPLE TOP	ELECTRIC LOG TOP	SUB-SEA DATUM	STRUCTURAL POSITION
Anhydrite		1704		
Topoka	3159	3166	-1043	+13
Heehner	3322	3322	-1199	+11
TORANTO	3346	3346	-1223	+8
LANING	3363	3358	-1235	+8
Base Kansas City	3568	3568	-1445	+12
MARSHTON	3591	3591	-1468	+10
CONCOMBERATE	3687	3687	-1564	+52
ARBuckle	3728	3728	-1605	+35

REFERENCE WELL FOR STRUCTURAL POSITION Harpoon Resources #1 Faulkner
14-8S-22W NE-NW-SW

DAILY PENETRATION

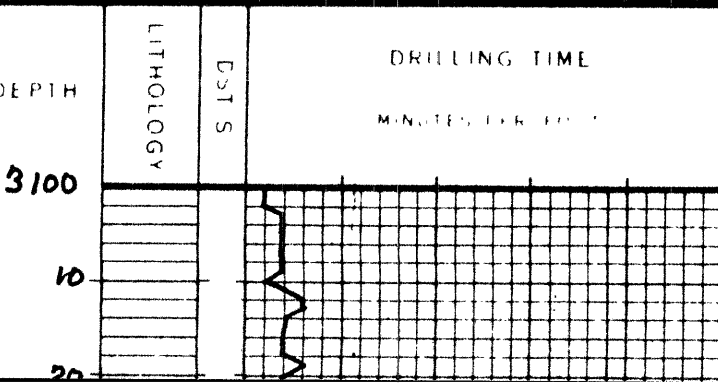
DATE	DEPTH
2-15-85	moved in - set SURFACE
2-16-85	630
2-17-85	2135
2-18-85	3050
2-19-85	3450
2-20-85	3550
2-21-85	3740
TOTAL DEPTH	3780

BIT RECORD

NO	SIZE	MAKE	TYPE	DEPTH OUT	FEET	HOURS
1	12 1/4	HTC	OSC3AJ	305	305	2 1/2
1	7 7/8	HTC	R-1	1987	1682	15 1/4
2	7 7/8	w/mc	O.52	3780	1793	52 1/4

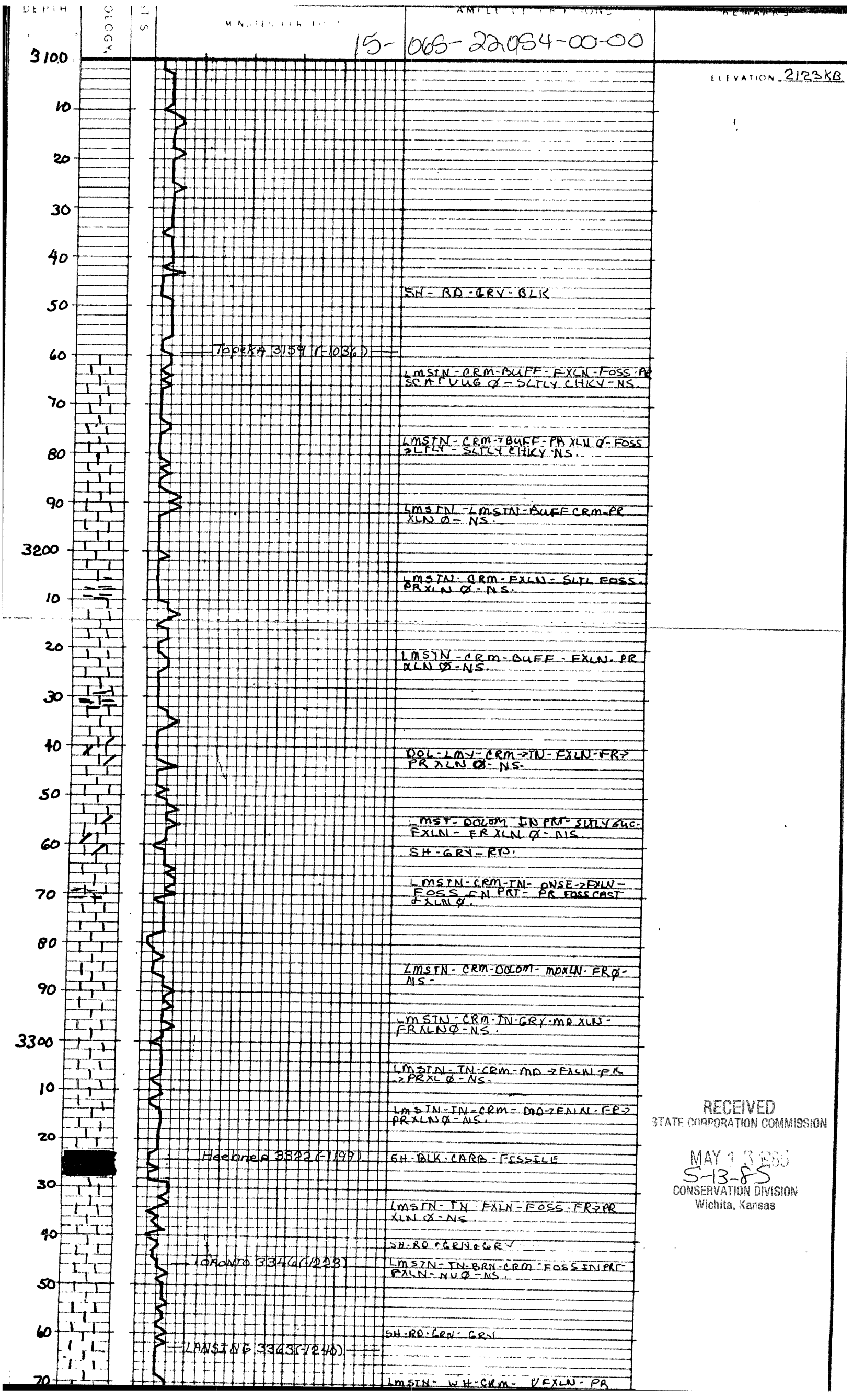
RECEIVED
STATE CORPORATION COMMISSION
MAY 13 1985
5-13-85
CONSERVATION DIVISION
Wichita, Kansas

15-060-22054-0000



DEPTH	LITHOLOGY	DST'S	DRILLING TIME MINUTES PER FOOT	SAMPLE DESCRIPTIONS	REMARKS
3100					
10					
20					

ELEVATION 2123KB



15-065-22054-00-00

ELEVATION 2123KB

DEPTH
3100
10
20
30
40
50
60
70
3200
10
20
30
40
50
60
70
3300
10
20
30
40
50
60
70

LOGGY

MS

Topok A 3154 (-1036)

SH-RO-GRY-BLK

LMSIN-CRM-BUFF-EXLN-FOSS-PR
SCAL VUG ϕ - SLTLY CHKY-NS.

LMSIN-CRM-BUFF-PR XLN ϕ -FOSS
SLTLY - SLTLY CHKY-NS.

LMSIN-LMSIN-BUFF CRM-PR
XLN ϕ -NS.

LMSIN-CRM-EXLN-SLTL FOSS
PR XLN ϕ -NS.

LMSIN-CRM-BUFF-EXLN-PR
XLN ϕ -NS.

DOL-LMY-CRM-TN-EXLN-FR
PR XLN ϕ -NS.

MSY-DOLOM IN PM-SLTL GUC.
EXLN-FR XLN ϕ -NS.

SH-GRY-RO.

LMSIN-CRM-TN-ANSE-EXLN-
FOSS-FIN PR-PR FOSS CAST
 ϕ XLN ϕ .

LMSIN-CRM-DOLM-MD XLN-FR ϕ -
NS.

LMSIN-CRM-TN-GRY-MD XLN-
FR XLN ϕ -NS.

LMSIN-TN-CRM-MD-EXLN-FR
PR XLN ϕ -NS.

LMSIN-TN-CRM-MD-EXLN-FR
PR XLN ϕ -NS.

Hedone A 3322 (-1199)

SH-BLK-CARB-FOSSILE

LMSIN-TN-EXLN-FOSS-FR PR
XLN ϕ -NS.

SH-RO-GRN & GRV

Toronto 3346 (-1223)

LMSIN-TN-BRN-CRM-FOSS IN PR
EXLN-NU ϕ -NS.

SH-RO-GRN-GRV

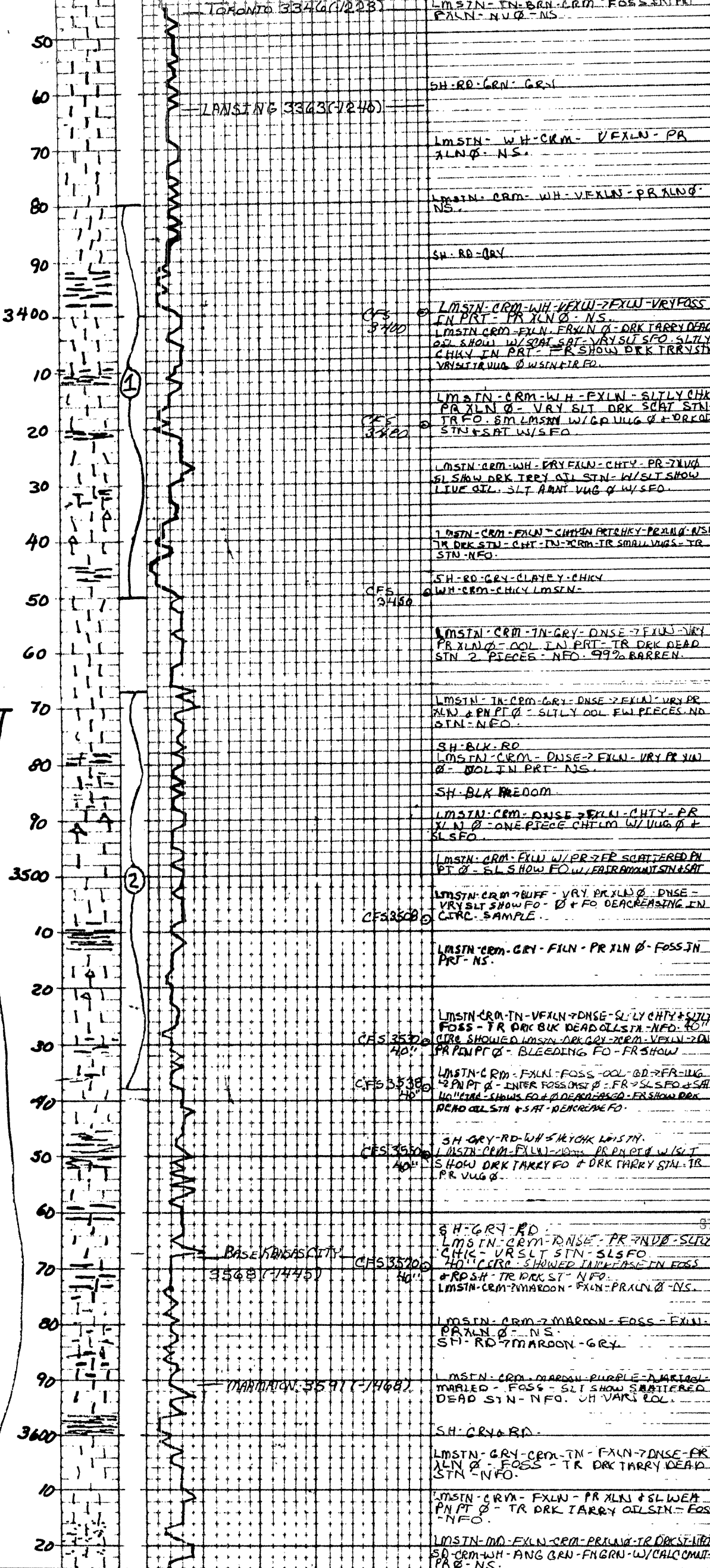
LANSING 3343 (-1246)

LMSIN-WH-CRM-EXLN-PR

RECEIVED
STATE CORPORATION COMMISSION

MAY 13 1985
S-13-85
CONSERVATION DIVISION
Wichita, Kansas

15-068-22054-00-00



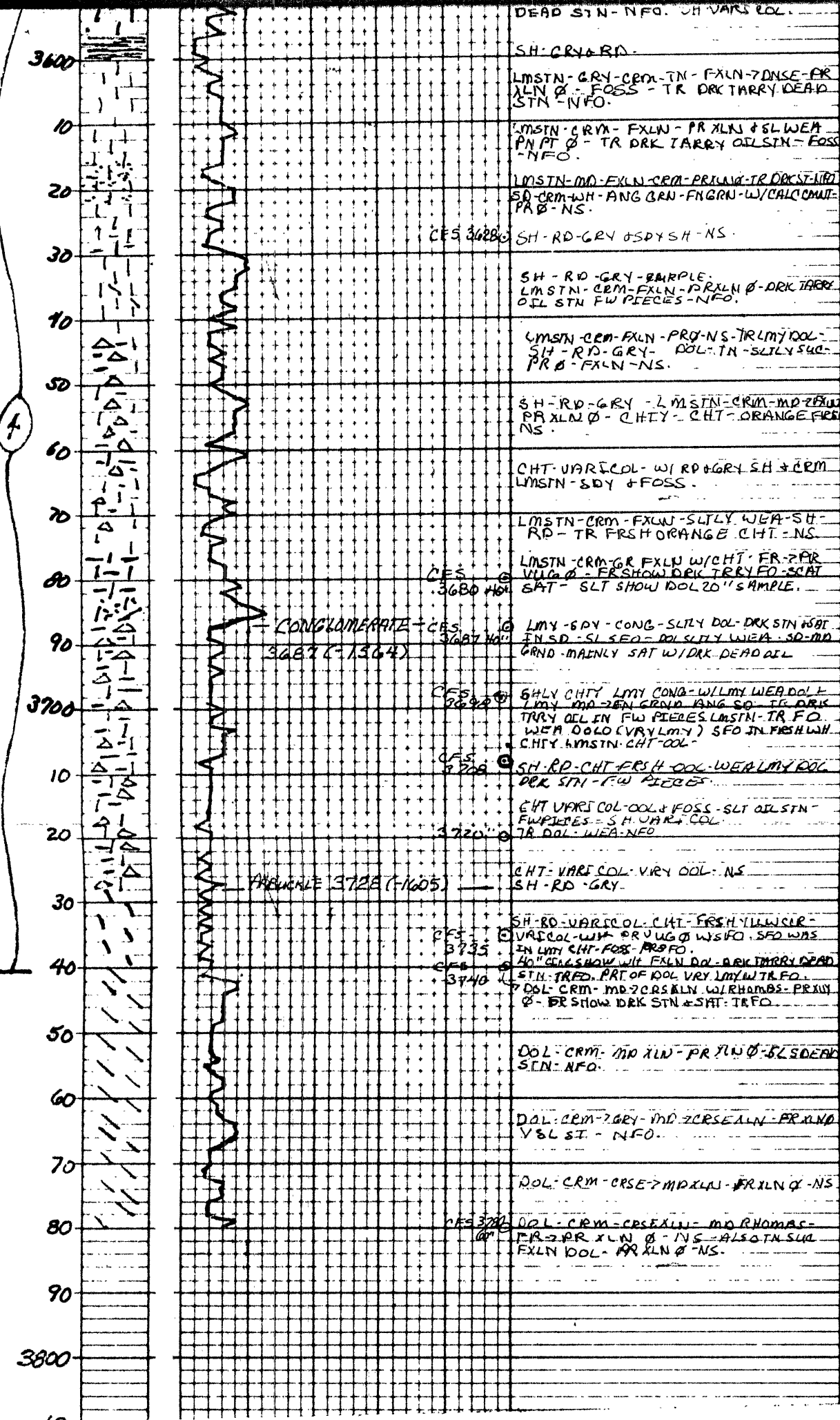
DST #1
 3380-3450
 30-60-30-60
 IFFR BLOW INCREASED TO VRY GD IN 15 MINUTES
 VRY GD BLOW THROUGHOUT
 REC 180' DRG MUD
 120' WATERY MUD
 420' MPDY WTR
 Chloride's 78,000 PPM
 IFP 64-204#
 ISIP 1175#
 FFP 258-366#
 FSIP 1164#
 TEMP. 105°

PIPE STRAP
 3465.00 BOARD
 3464.17 STRAP
 .83↑

DST #2
 3467-3538
 30-60-30-60
 WK Blow died in 25'
 2nd Open - NO Blow
 REC 10' mud w/FEW SPOTS OF OIL
 IFP 32-32#
 ISIP 172#
 FFP 43-43#
 FSIP 86#
 TEMP. 106°

RECEIVED
 STATE CORPORATION COMMISSION
 MAY 13 1985
 5-13-85
 CONSERVATION DIVISION
 Wichita, Kansas

15-065-29154-00-00



DST # 3-3631-3740
MISRUN

visc 45
wt 9.4

visc 41
wt 9.3

visc 45 WT 9.3

DST # 4
3470-3740
30-30-30-30
IFP - Blow strong to bottom of bucket 1 min.
FFP - Blow strong to bottom of bucket in 2 min.
REC 100' mud
2180' SW
Chlorides
28,000 PPM
Pluggin action IFP
IFP - to 891#
ISIP 1194#
FFP 941-1143#
FSIP 1194 #

RECEIVED
STATE CORPORATION COMMISSION
5-13-85
MAY 13 1985
CONSERVATION DIVISION
Wichita, Kansas