

15-163-22792-00-00

STATE OF KANSAS
STATE CORPORATION COMMISSION

WELL PLUGGING RECORD

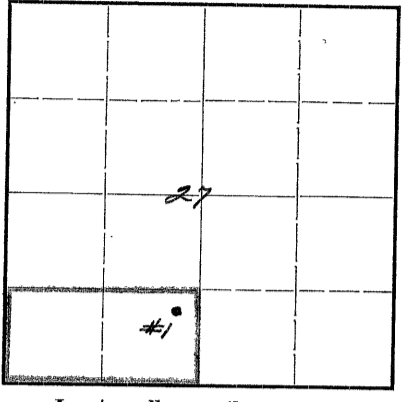
Give All Information Completely
Make Required Affidavit
Mail or Deliver Report to:
Conservation Division
State Corporation Commission
800 Bittling Building
Wichita, Kansas

OR

FORMATION PLUGGING RECORD

Strike out upper line
when reporting plugging
off formations.

NORTH



Locate well correctly on above
Section Plat

Rooks County. Sec. 27 Twp. 9S Rge. (E) 19 (W)
Location as "NE 1/4 NW 1/4 SW 1/4" or footage from lines NE 1/4 SE 1/4 SW 1/4
Lease Owner Skelly Oil Company
Lease Name Zurich Townsite Unit Well No. 1
Office Address Box 391, Hutchinson, Kansas
Character of Well (completed as Oil, Gas or Dry Hole) Dry Hole
Date well completed December 18 19 44
Application for plugging filed December 18 19 44
Application for plugging approved December 21 19 44
Plugging commenced January 18 19 45
Plugging completed January 22 19 45
Reason for abandonment of well or producing formation Dry Hole

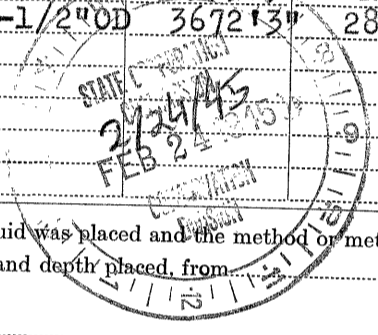
If a producing well is abandoned, date of last production 19
Was permission obtained from the Conservation Division or its agents before plugging was commenced? Yes

Name of Conservation Agent who supervised plugging of this well H. W. Kerr
Producing formation Depth to top Bottom Total Depth of Well 3684 Feet
Show depth and thickness of all water, oil and gas formations.

OIL, GAS OR WATER RECORDS

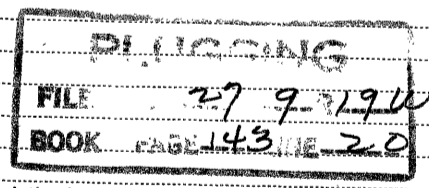
CASING RECORD

Formation	Content	From	To	Size	Put In	Pulled Out
Anhydrite	Dry	1580'		13-3/8" OD	170' 6"	None
Lansing Lime	Sli. sat.	3378'		8-5/8" OD	1595' 9"	None
Arbuckle Lime	Sat.	3645'	3649'	5-1/2" OD	3672' 3"	2891' 5"
	Water	3664'	3684'			



Describe in detail the manner in which the well was plugged, indicating where the mud fluid was placed and the method or methods used in introducing it into the hold. If cement or other plugs were used, state the character of same and depth placed, from feet to feet for each plug set.

Lane Wells bridging plug set at 3517'
Lane Wells bridging plug set at 3472'
Crushed rock & Cal-Seal 3472' to 3440'
Mud laden fluid 3440' to 3240'
Wood plug and 8 sacks cement 3240' to 3180'
Mud laden fluid 3180' to 1425'
Wood plug and 10 sacks cement 1425' to 1350'
Mud laden fluid 1350' to 300'
Wood plug and 10 sacks cement 300' to 270'
Mud laden fluid 270' to 15'
Wood plug and 5 sacks cement 15' to 6'
Surface soil and rock 6' to 0.



(If additional description is necessary, use BACK of this sheet)

Correspondence regarding this well should be addressed to Skelly Oil Company
Address Box 391, Hutchinson, Kansas

STATE OF KANSAS, COUNTY OF RENO, ss.
H. E. Wamsley (employee of owner)

being first duly sworn on oath, says: That I have knowledge of the facts, statements, and matters herein contained and the log of the above-described well as filed and that the same are true and correct. So help me God.

(Signature) [Signature]

Box 391, Hutchinson, Kansas (Address)

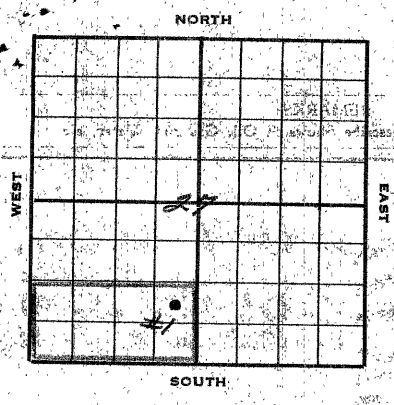
SUBSCRIBED AND SWORN TO before me this 23rd day of February, 19 45

[Signature] Notary Public.

My commission expires August 4, 1945.

15-163-22792-00-00

SKELLY OIL COMPANY

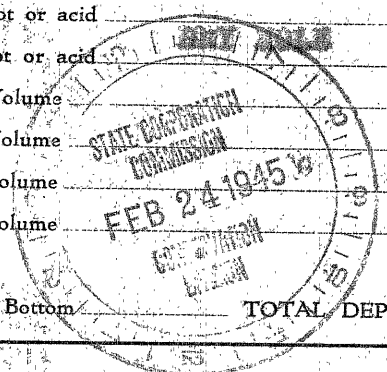


Well Record

Lease Name and No. Starling Township 21S Well No. 2 Elev. 2211'
 Lease Description 1/2 3/4 Section 27-29-27N,
Rock County, Kansas
 Location made October 12 1944 by Rock County Engineer
330 feet from North line 330 feet from East line 3/2 3/4
330 feet from South line 330 feet from West line of Sec. 27

Work com'd Oct. 14 1944 Rig com'p'd Oct. 20 1944 Drlg. com'd Oct. 20 1944 Drlg. com'p'd Nov. 30 1944
 Rig Contractor Starling Drilling Company
 Drilling Contractor Starling Drilling Company, Starling, Kansas
 Rotary Drilling from 207 to 3648' Cable Tool Drilling from 3648' to 3684'

Commenced Producing Jan 1945 1945 { Initial Prod. before shot or acid _____ Bbls.
 Initial Prod. after shot or acid _____ Bbls.
 Dry Gas Well Press _____ Volume _____ Cu. ft.
 Casing Head Gas Pressure _____ Volume _____ Cu. ft.
 Braden Head (_____ Size _____) Gas Pressure _____ Volume _____ Cu. ft.
 Braden Head (_____ Size _____) Gas Pressure _____ Volume _____ Cu. ft.



PRODUCING FORMATION SMITH HOLE (Name) Top _____ Bottom _____ TOTAL DEPTH 3684'

CASING RECORD

Size	Wt.	Thds.	Where Set	PULLED OUT			LEFT IN			KIND	Cond'n	Sacks Used	CEMENTING Method Employed
				Fts.	Feet	In.	Fts.	Feet	In.				
13-3/8"	32.5	27	177'				4	170	6	13 735 35 A	150	Halliburton	
9-5/8"	22.5	32	1786'				25	1773	9	22 240 28 A	600	Halliburton	
5-1/2"	10.4	32	3643'	179	2891	11	25	700	10	22 240 28 "	200	Halliburton	
(13-3/8" casing set 576' in collar & 9-5/8" set 6' in collar)													
5 1/2" casing perforated: 22 holes from 3478-36'; 22 holes from 3438-66'; 22 holes from 3421-49'; 14 holes from 3375-92'; 48 holes from 3403-87'; 11 holes from 3372-95'													

Liner Set at _____ Length _____ Perforated at _____
 Liner Set at _____ Length _____ Perforated at _____
 Packer Set at _____ Size and Kind _____
 Packer Set at _____ Size and Kind _____

SHOT OR ACID TREATMENT RECORD

	FIRST	SECOND	THIRD	FOURTH
Date	November 20, 1944	November 24, 1944	December 3, 1944	
Acid Used				
Size Shot	1000	1500	750	
Shot Between	3643' Ft. and 3648' Ft.	3643' Ft. and 3648' Ft.	3495' Ft. and 3668' Ft.	Ft. and Ft.
Size of Shell				See body of log
Put in by (Co.)	Dowell, Inc.	Dowell, Inc.	Dowell, Inc.	for further acid treatment
Length anchor				
Distance below Cas'g				
Damage to Casing or Casing Shoulder	None	None	None	

SIGNIFICANT GEOLOGICAL FORMATIONS

NAME	Top	Bottom	GAS		OIL		REMARKS
			From	To	From	To	
Anhydrite	1500'						
Lansing Lias	3778'				3378'	3480'	all. oil.
Arbuckle Lias	3640'				3430'	3977'	all. stain
					3645'	3649'	Intercalated

CLEANING OUT RECORDS

	DATE COMMENCED	DATE COMPLETED	PROD. BEFORE	PROD. AFTER	REMARKS
1st					See Reverse for other details.
2nd					" " " " "
3rd					" " " " "
4th					" " " " "

PLUGGING BACK AND DEEPENING RECORDS

	Date Commenced	Date Completed	No. Feet Plugged Back or Deepened	Prod. Before	Prod. After	REMARKS
1st						See Reverse for other details.
2nd						" " " " "
3rd						" " " " "
4th						" " " " "

(See Reverse for Record of Formation)

RECORD OF FORMATIONS

FORMATION	TOP	BOTTOM	REMARKS
Surface soil and sand	0	130	
Shale and shells	130	175	Set and cemented 11-5/8" OD, 34', 5/8" thread, Grade J35, Range 3, seamless steel casing at 135' with 150 sacks of cement and 4 sacks of squalol.
Shale and shells	175	180	
Shale and shells	180	185	
Sand and shells	185	190	
Shale and shells	190	195	
Sand	195	200	
Sand and shells	200	205	
Shale and shells	205	210	
Sand	210	215	
Shale and sand	215	220	
Line and sand	220	225	
Anhydrite	225	230	
Anhydrite	1390	1420	
Red bed	1420	1430	
Shells and shale	1430	1440	
Line and shale	1440	1450	
Line	1450	1460	
Line and shale	1460	1470	
Line	1470	1480	
Shale	1480	1490	
Line and shale	1490	1500	
Line	1500	1510	
Shale and line	1510	1520	
Line	1520	1530	
Line and shale	1530	1540	
Line	1540	1550	
Dark shale with streaks of lime	3624	3641	TOP ANHYDRITE LINE 3641' ±
Dense gray coarsely crystalline calcite and chert	3641	3647	
Brown porous coarsely crystalline calcite	3647	3649	Set and cemented 5-1/2" OD, 14', 5/8" thread, Grade J40, Range 2, seamless steel casing at 3647' with 200 sacks of cement and 4 sacks of squalol. Finished cementing at 1:30 AM November 2, 1944, and while waiting for cement to set moved in and rigged up cable tools. Finished rigging up and bailed the hole dry on November 16, 1944, and 5-1/8" casing cemented. Drilled cement plug and present job tested OK. Corrections: 3647' oil rotary table equals 3648' six derrick floor.
SEE	3647	3648	
<p>Cleaned out to bottom, washed hole of oil, no fill sp. On November 16, 1944, ran 2" tubing and on November 20, 1944, treated with 1000 gallons of Dowell "17-3 & 17" acid as follows:</p>			
<p><u>ACID TREATMENT NO. 1 - Between 3641' and 3648'</u> Treatment put in by Dowell, Inc., November 20, 1944, using 1000 gallons of acid and 15 barrels of oil to flush hole:</p>			
TIME	OF	BY	REMARKS
11:10 AM	30'	30'	Hole filled with oil and started acid in
11:30 AM	350'		375 gallons acid in hole
12:00 AM	1150'	800'	675 gallons acid in hole
12:22 AM	1150'	800'	1000 gallons acid in hole and started oil flush
1:03 AM	1150'	1100'	12 barrels flushing oil in hole
1:11 AM	1150'	1175'	15 barrels flushing oil in hole and treatment complete
<p>After acid treatment 700 9 hours, 22 barrels of cut oil (oil used in treating) and well pumped off. On November 21, 1944, ran 24 hours, 4 barrels oil and no water. On November 22, 1944, pulled 1000' and tubing and cleaned out to bottom. On November 24, 1944, ran 2" tubing and cemented with 1500 gallons of Dowell "17" acid as follows:</p>			
<p><u>ACID TREATMENT NO. 2 - Between 3641' and 3648'</u> Treatment put in by Dowell, Inc., November 24, 1944, using 1500 gallons of acid and 17 barrels of oil to flush hole:</p>			

TIME	OP	IF	REMARKS
3:25 PM			Filled hole with oil and started acid in
4:31 PM	400%		600 gallons acid in hole
4:43 PM	1100%	700%	750 gallons acid in hole
4:57 PM	450%	50%	1500 gallons acid in hole and started oil flush
5:13 PM	450%	50%	Hole flushed with 17 barrels of oil and treatment complete

After acid treatment, FOB 24 hours, 12.76 barrels fluid, 90% water. On November 26, 1944, FOB 24 hours, 12.92 barrels fluid, 70% water.

On November 27, 1944, pulled rods and tubing and drilled deeper as follows:

Time	OP	IF	REMARKS
Grey cherty dolomite	3648	3652	No increase in fluid
Sand	3652	3664	No show
Sand	3664	3684	400' water in hole in 2 hours while drilling 3682-84'

TOTAL DEPTH 3684'

On November 30th set Lane-wells bridging plug at 3317' and on December 1st perforated 3-1/2" casing with 22 holes from 3478' to 3486'. 300' water in hole in 1 1/2 hours, 2500' water in hole in 7 1/2 hours. Set Lane-wells bridging plug at 3472', then perforated 3-1/2" casing with 22 holes between 3438' and 3464', no shows. Perforated with 32 holes between 3441' and 3449', no shows. Perforated with 44 holes between 3379' and 3391', slight show of sand and water with oil stain from 3381'-87'. Bailed and cleaned up hole and tested 6 hours, 10 to 15 gallons of water per hour with rainbow show of oil.

On December 4th ran 2" tubing and on December 5th treated with packer set at 3430' with 750 gallons Dowell "XF" acid below packer as follows:

ACID TREATMENT NO. 3 - Between 3430' and 3468'

Treatment put in by Dowell, Inc., December 5, 1944, using 750 gallons of acid and 15 barrels of oil to flush hole:

TIME	OP	IF	REMARKS
11:23 AM			Hole filled with oil and started acid in
1:13 PM	250%	450%	600 gallons acid in hole
1:39 PM	200%	190%	750 gallons acid in hole and started oil flush
2:03 PM	100%	400%	Hole flushed with 15 barrels oil and treatment complete

After acid treatment, FOB 14 hours, 74 barrels of cut oil (oil used in treating), last 3 hours pumped 3/4 barrels fluid per hour showing 13% water.

On December 6th FOB 24 hours, 21 barrels fluid, 93% water. On December 7th pulled rods and tubing and ran 2" tubing and set packer at 3408' and treated above packer with 750 gallons Dowell "XF" acid as follows:

ACID TREATMENT NO. 4 - Between 3408' and 3401'

Treatment put in by Dowell, Inc., December 6, 1944, using 750 gallons of acid and 15 barrels of oil to flush hole:

TIME	OP	IF	REMARKS
8:00 PM			Hole filled with oil and started acid in
8:15 PM	300%	75%	500 gallons acid in hole
8:23 PM	500%	275%	750 gallons acid in hole
8:35 PM	350%	350%	Hole flushed with 15 barrels oil and treatment complete

After acid treatment, ran rods and FOB 6 1/2 hours, 23 barrels oil (oil used in treating). On December 8th, FOB 24 hours, 29 barrels oil (oil used in treating). On December 9th, FOB 24 hours, 4 1/2 barrels fluid, 70% water. On December 10th, FOB 4 hours, 1 1/2 barrels water.

On December 11th pulled rods and tubing and bailed hole dry. On December 12th perforated 3/4" casing with 48 holes from 3423' to 3427', no increases, 11 holes from 3391' to 3395', no increases. On December 13th, plugged back with crushed rock and Cal-Seal from 3472' to 3440', then ran 2" tubing and on December 14th set packer at 3411' and treated from 3423' to 3437' with 1000 gallons of Dowell "XF-20" acid as follows:

ACID TREATMENT NO. 5 - Between 3423' and 3437'

Treatment put in by Dowell, Inc., December 14, 1944, using 1000 gallons of acid and 14 barrels of oil to flush hole:

TIME	OP	IF	REMARKS
4:40 PM			Hole filled with oil and started acid in
5:05 PM	250%		550 gallons acid in hole
5:20 PM	150%	200%	650 gallons acid in hole
5:25 PM		200%	1000 gallons acid in hole and started oil flush
5:49 PM		350%	Hole flushed with 14 barrels oil and treatment complete

After acid treatment, snubbed through 2" tubing 3 hours, 26 barrels oil and acid water and on December 15th ran rods and FOB 14 hours, 50 barrels oil (oil used in treating), last 6 hours pumped 1/2 barrel fluid per hour showing 99% water. Pulled tubing and shut down for orders. On December 18th regular authority was granted to plug tax hole and abandon the location.

On January 18, 1945, started plugging and plugged the well as follows:

lane wells bridging plug at		3517'	
lane wells bridging plug at		3472'	
Crushed rock & Cal-seal	3472'	to	3440'
and laden fluid	3440'	to	3240'
wood plug and 6 sacks cement	3240'	to	3180'
and laden fluid	3180'	to	1425'
wood plug and 10 sacks cement	1425'	to	1350'
and laden fluid	1350'	to	300'
wood plug and 10 sacks cement	300'	to	270'
and laden fluid	270'	to	15'
wood plug and 3 sacks cement	15'	to	0'
Surface well and rock	0'	to	0'

LOGS FROM WELLS

DEPTH	TEMPERATURE	LOGS
250'	0	Log 1
300'	0	"
750'	0	"
1000'	0	"
1250'	0	"
1500'	0	"
1750'	0	"
2000'	0	"
2250'	0	"
2500'	0	"
2750'	0	"
3000'	0	"
3250'	0	"
3500'	0	"

REC'D
 27 9 1945
 143
 20



STATE OF KANSAS
 STATE CORPORATION COMMISSION
 CONSERVATION DIVISION
 800 BITTING BUILDING
 WICHITA 2, KANSAS

January 28, 1945

IN REPLY PLEASE
 REFER TO THIS
 SUBJECT

Skelly Oil Company
 Box 391
 Hutchinson, Kansas

IN ACCOUNT WITH Conservation Division, State Corporation Commission
 Wichita, Kansas

WE Charge YOU

Plugging Assessment.....\$ **25.00**

Well No. **1**
 Farm **Zurich Townsite Unit**
 Description **NE 22 SW 27-9-19W**
 County **Rooks**
 File **143-20**

pd.
2/14/45
Ho,

The assessment for the plugging of all wells in the State of Kansas is one cent per foot, with a maximum of \$25.00 and a minimum of \$5.00.

This assessment will be past due February 23, 1945

PLEASE RETURN ONE COPY WITH REMITTANCE

NOTE: **We also need a well log and plugging record covering this well, to complete this file.**