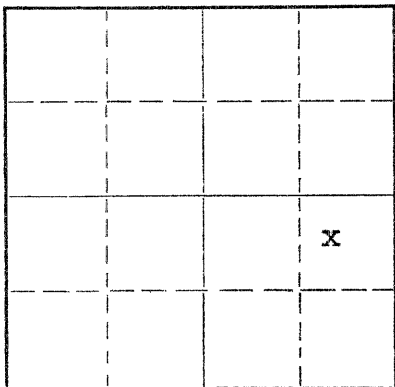


STATE OF KANSAS
STATE CORPORATION COMMISSION

Give All Information Completely
Make Required Affidavit
Mail or Deliver Report to:
Conservation Division
State Corporation Commission
211 No. Broadway
Wichita, Kansas

WELL PLUGGING RECORD

NORTH



Locate well correctly on above
Section Plat

Rooks

County. Sec. 8 Typ. 9 Rge. 19 (E) W (W)

Location as "NE/CNW4SW4" or footage from lines SE/4 NE/4 SE/4

Lease Owner Allen T. Fender

Lease Name ~~Barnes and Sons Pipe Pulling Co~~ ZIEGLER

Well No. 1

Office Address Russell, Kansas.

Character of Well (completed as Oil, Gas or Dry Hole) Oil

Date well completed Dec 1945

Application for plugging filed Oct 1959

Application for plugging approved Nov 2 1959

Plugging commenced Nov 11 1959

Plugging completed Nov 20 1959

Reason for abandonment of well or producing formation Depleted

If a producing well is abandoned, date of last production Oct 1959

Was permission obtained from the Conservation Division or its agents before plugging was commenced? yes

Name of Conservation Agent who supervised plugging of this well Eldon Petty

Producing formation Depth to top Bottom Total Depth of Well 3354 Feet

Show depth and thickness of all water, oil and gas formations.

OIL, GAS OR WATER RECORDS

CASING RECORD

FORMATION	CONTENT	FROM	TO	SIZE	PUT IN	PULLED OUT

Describe in detail the manner in which the well was plugged, indicating where the mud fluid was placed and the method or methods used in introducing it into the hole. If cement or other plugs were used, state the character of same and depth placed, from 3354 feet to surface, feet for each plug set.

Well had been plugged back from 3354 to 3325 ft; casing preforated from 3296 to 3303. Hole filled with sand from 3325 to 3285 ft; four sacks of cement placed in hole with dump bailer; Pipe shot off and pulled to 550 feet; Globe cementing trucks circulated hole with 30 sacks of cement at 550 feet; and 20 sacks of cement pumped down hole; pipe pulled to 170 feet, and 20 additional sacks of cement pumped down hole, and remainder of pipe pulled from hole and hole bailed down and capped with 10 sacks of cement.

RECEIVED
STATE CORPORATION COMMISSION

DEC 22 1959
12-22-59
CONSERVATION DIVISION
Wichita, Kansas

(If additional description is necessary, use BACK of this sheet)
Name of Plugging Contractor Barnes and Sons Pipe Pulling Co
Address Russell, Kansas.

STATE OF _____, COUNTY OF _____, ss.

_____, (employee of owner) or (owner or operator) of the above-described well, being first duly sworn on oath, says: That I have knowledge of the facts, statements, and matters herein contained and the log of the above-described well as filed and that the same are true and correct. So help me God.

(Signature) Allen T. Fender
Russell, Kansas
(Address)

SUBSCRIBED AND SWORN TO before me this 21 st day of December, 1959

My commission expires 4-5-1961

Jewel Delt
Notary Public.



COPY

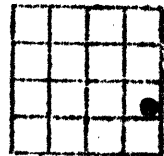
WELL LOG BUREAU KANSAS GEOLOGICAL SOCIETY
412 Union National Bldg Bldg Wichita, Kansas

Company PHILLIPS PETRO. CO.
Farm Ziegler No. 1

SEC. 8 T. 9 R. 19 W
SE NE SE

Total Depth. 3354'
Comm. 11-12-45 Comp. 12-28-45
Shot or Treated.
Contractor.
Issued. 6-11-46

County. Rocks
KANSAS



Elevation. _____

Production. Phy. Pot. 655 BOPD
plus 27 BW

Figures Indicate Bottom of Formations.

shale & limestone 0-90
sand, shale &
shells 690
shale & shells 985
sand 1140
shale & sand 1256
red bed & shale 1479
anhydrite & lime 1494
anhydrite 1522
red shale & salt 1910
shale 1950
lime & shale 2090
sand, shale &
shells 2245
lime & shale 3190
lime 3230
lime & shale 3295
lime 3354
Total Depth.

Tops:
Anhydrite 1477
Heebner 3222
Trans. K.C. 3242

D.S.T. 3334-54'
Open 1 hr. 18 mins., rec.
2850' fluid, mostly oil.

RECEIVED
STATE CORPORATION COMMISSION

NOV 25 1964
11-25-64
CONSERVATION DIVISION
Wichita, Kansas

15-163-04/93-00-01

Halliburton
PATENTED PROCESS
Oil Well Cementing Co.

WELL LOG

Company PHILLIPS PETROLEUM CO.
Well ZIEGLER #1
Field Zurich Area
County Rooks State Kansas
Location Sec 8-9-19W

Company PHILLIPS PETROLEUM CO.
Well ZIEGLER #1
Field Zurich Area
County Rooks State Kansas

All Depths Referred To Derrick floor Elevation 2060 Ft.
Log Begins At 1485' Ends At 3351' Ft.

HOLE DIMENSIONS
Casing Size 8 5/8" To 1485' Hole Size 7 7/8" To 3351'

MUD CHARACTERISTICS
Mud Impedance .1 Ohms Weight 9.8 Lbs. per Gal.
Viscosity 34 Seconds Type

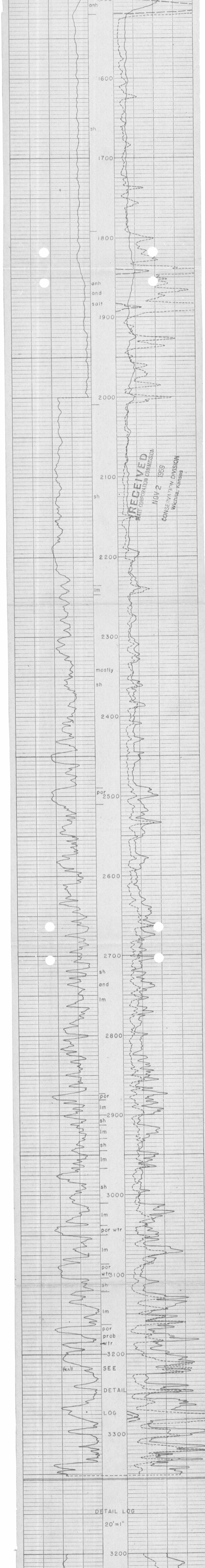
REMARKS
Derrick floor 3' above surface
bbl. 3 ohm mud displaced to bottom before survey

No. One

File No.

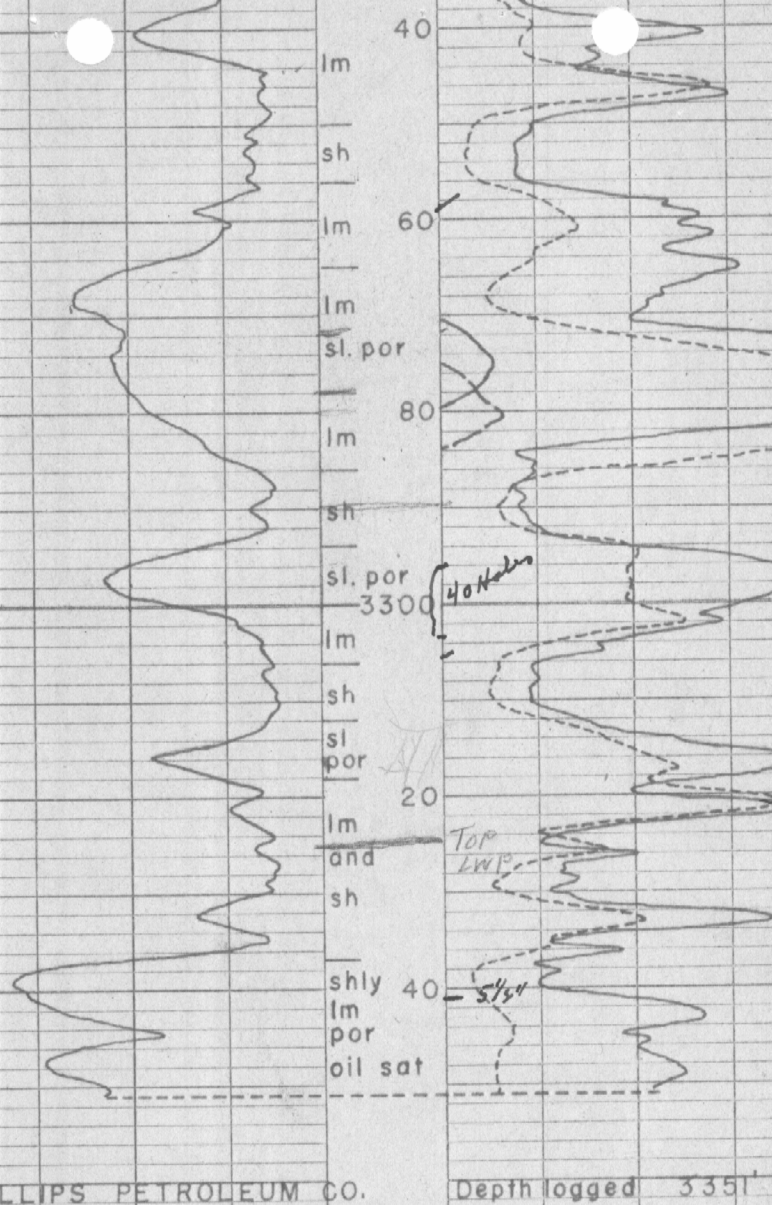
11-24-45

Operator R.B. Hamill



DETAIL LOG

20' = 1"



PHILLIPS PETROLEUM CO.
ZIEGLER #1
Zurich Area
Rooks County, Kansas.

Depth logged 3351'
T.D. Driller 3355'

RECEIVED
STATE CORPORATION COMMISSION
NOV 2 1959
CONSERVATION DIVISION
Wichita, Kansas