

STATE OF KANSAS
STATE CORPORATION COMMISSION

Form CP-4

Give All Information Completely
Make Required Affidavit
Mail or Deliver Report to:
Conservation Division
State Corporation Commission
212 No. Market
Wichita, Kansas

WELL PLUGGING RECORD

Rooks

County, Sec. 4 Twp. 9s Rge. 19 (E) (W)

Location as "NE/CNW%SW%" or footage from lines SW NW NW

Lease Owner Petroleum, Inc.,

Lease Name Rostocil "B"

Well No. 1

Office Address R.R. #2, Great Bend, Kansas

Character of Well (completed as Oil, Gas or Dry Hole) oil

Date well completed Aug. 25 19 63

Application for plugging filed Jan. 21 19 66

Application for plugging approved Jan. 24 19 66

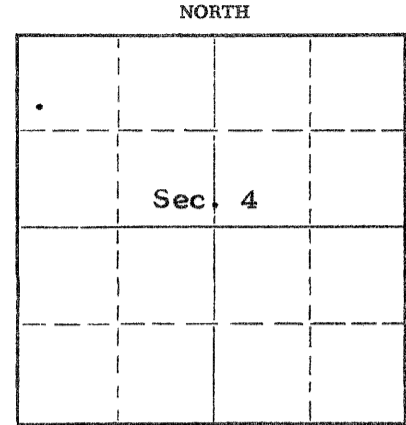
Plugging commenced Feb. 11 19 66

Plugging completed Feb. 16 19 66

Reason for abandonment of well or producing formation depletion of producible zone

If a producing well is abandoned, date of last production Dec. 22 19 65

Was permission obtained from the Conservation Division or its agents before plugging was commenced? yes



Locate well correctly on above Section Plat

Name of Conservation Agent who supervised plugging of this well Gilbert Leiker

Producing formation arbuckle Depth to top 3463' Bottom 3478' Total Depth of Well 3478' Feet

Show depth and thickness of all water, oil and gas formations.

OIL, GAS OR WATER RECORDS

CASING RECORD

FORMATION	CONTENT	FROM	TO	SIZE	PUT IN	PULLED OUT
arbuckle	small amount of oil & water	open hole		8-5/8"	258'	none
				5-1/2"	3468'	2778'

Describe in detail the manner in which the well was plugged, indicating where the mud fluid was placed and the method or methods used in introducing it into the hole. If cement or other plugs were used, state the character of same and depth placed, from _____ feet to _____ feet for each plug set.

filled sand from 3478' to 3455', pumped 3 sacks cement from 3455' to 3437'. Pulled pipe to 603', pumped 12 sacks of gel. mud. Pulled pipe to 495' and pumped 20 sacks of cement. Pulled pipe to 250' and pumped 20 sacks of cement. Ran 10 sacks cement from 40' to base of well cellar.

RECEIVED
STATE CORPORATION COMMISSION
3/2/66
MAR 2 1966

CONSERVATION DIVISION
Wichita, Kansas

Name of Plugging Contractor Glenn & Smith Pipe Pulling Co. (If additional description is necessary, use BACK of this sheet)

Address Box 156, Ellinwood, Kansas

STATE OF Kansas COUNTY OF Barton, ss.

Monte Chadd

(employee of owner) or (owner or operator) of the above-described well, being first duly sworn on oath, says: That I have knowledge of the facts, statements, and matters herein contained and the log of the above-described well as filed and that the same are true and correct. So help me God. Monte Chadd, Dist. Prod. Supt.

(Signature)

Route #2, Great Bend, Kansas

(Address)

SUBSCRIBED AND SWORN to before me this 24 day of February, 19 66

My commission expires May 28, 1969

Richard N. Dumbler

Notary Public.

WELL LOG

15-163-19318-00-00

COMPANY Petroleum Incorporated

SEC. 4 T. 9S R. 19W

FARM Rostocil NO. B-1

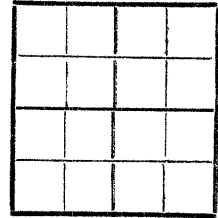
LOC. ~~SIXXX~~ SW NW NW

TOTAL DEPTH 3473'

COUNTY Rooks

COMM. 7-27-63 COMP. 8-6-63

CONTRACTOR Garvey Drilling Company



CASING 8 5/8" @ 258' w/200 sx
5 1/2" @ 3468' w/75 sx

ELEVATION 2032' DF

PRODUCTION Arbuckle

FIGURES INDICATE BOTTOM OF FORMATIONS

550' Shale
 610' Sand
 1200' Shale
 1460' Shale and Shells
 1490' Anhydrite
 1524' Shale
 1960' Shale and Shells
 2147' Shale and Lime
 2394' Lime
 2950' Lime and Shale
 3047' Shale and Lime
 3115' Lime and Shale
 3140' Lime
 3173' Lime and Shale
 3430' Lime
 3462' Lime and Shale
 3468' Lime
 3473' Arbuckle
 3473' RTD

RECEIVED
 STATE CORPORATION COMMISSION
 3/2/66
 MAR 2 1966
 CONSERVATION DIVISION
 Wichita, Kansas

State of Kansas }
 County of Barton } ss

I, Sam N. Stephens of Garvey Drilling Company
 upon oath state the above and foregoing is a true and correct copy of the log of the Rostocil B-1 well.

Sam N. Stephens

Subscribed and sworn to before me this 9th day of August 19 63

My Commission Expires: April 14th, 1967

Arthur J. Wiles
 NOTARY PUBLIC