



LAUGHLIN-SIMMONS & CO. OF KANSAS, INC.

OIL FIELD SURVEYING
1337 NORTH MERIDIAN, SUITE 2 (316) 943-5351
WICHITA, KANSAS 67203

KW902875
INVOICE NO.

COLUMBIA GAS DEVELOPMENT CORP OPERATOR 25-1 NO. Garey FARM

Rooks COUNTY 25 S 8 T 20 W R SE SW SE LOCATION

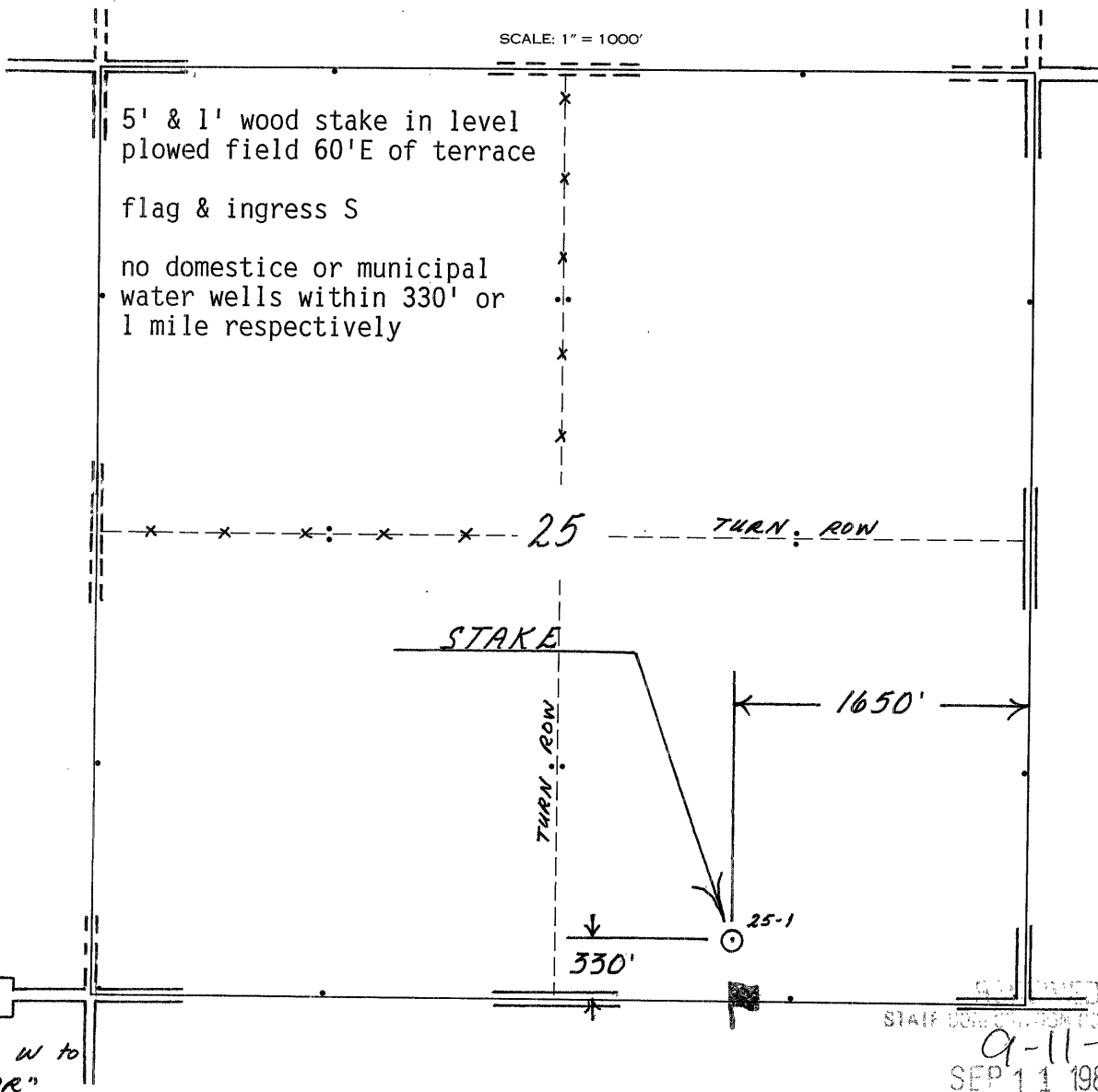
ELEVATION: 2057 gr



COLUMBIA GAS DEVELOPMENT CORPORATION
P. O. Box 1350
Houston, Texas 77251

AUTHORIZED BY: Lynn Roque

SCALE: 1" = 1000'



STATE OF KANSAS
9-11-87
SEP 11 1987

CONSERVATION DIVISION
Wichita, Kansas