

STATE CORPORATION COMMISSION OF KANSAS  
OIL & GAS CONSERVATION DIVISION  
RECOMPLETION FORM  
ACO-2 AMENDMENT TO WELL HISTORY

API NO. 15- E-22,477

County Stafford

NW SE NW Sec. 13 Twp. 25S Rge. 13 XXX East West

3630 Ft. North from Southeast Corner of Section

3630 Ft. West from Southeast Corner of Section  
(NOTE: Locate well in section plat below.)

Lease Name South Leesburg Unit Well # 103

Field Name South Leesburg

Producing Formation Topeka

Elevation: Ground 1917 KB

Operator: License # 6679

Name: W D SHORT

Address: P O Box 729

City/State/Zip: Oxford, KS 67119

Purchaser: Seminole Trading

Operator Contact Person: W. D. Short  
Phone: (316) 455-3576

Designate Type of Original Completion  
       New Well        Re-Entry X Workover

Date of Original Completion 8/26/1964

Name of Original Operator Conoco, Inc.

Original Well Name George Russell #3

Date of Recompletion:

3/24/75 4/8/75  
Commenced Completed 8/17/2000

Re-entry  Workover

Designate Type of Recompletion/Workover:  
       Oil        SWD        Temp. Abd.  
       Gas        Inj        Delayed Comp.  
       Dry        Other (Core, Water Supply, etc.)

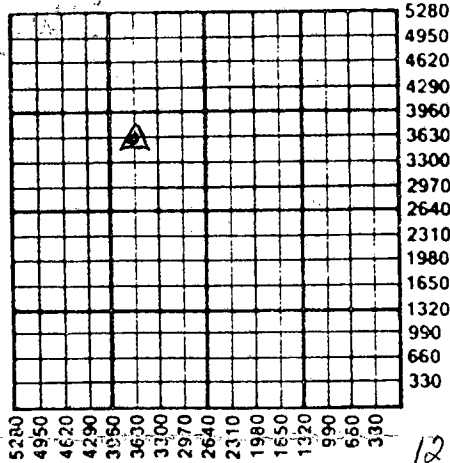
       Deepening        Re-perforation  
       Plug Back        PBD  
XX Conversion to Injection/Disposal

Is recompleted production:  
       Commingled Docket No.         
       Dual Completion Docket No.         
       Other (Disposal or Injection?) Docket No.       

CONSERVATION DIVISION  
Wichita, Kansas

AUG 25 2000

RECEIVED  
STATE CORPORATION COMMISSION



OWWO  
12/12/2002 CIA

K.C.C. OFFICE USE ONLY  
F        Letter of Confidentiality Attached  
C        Wireline Log Received  
C        Drillers Timelog Received  
  
Distribution  
       KCC        SWD/Rep        NGPA  
       KGS        Plug        Other  
(Specify)

**INSTRUCTIONS:** This form shall be completed in triplicate and filed with the Kansas Corporation Commission, 200 Colorado Derby Building, Wichita, Kansas 67202, within 120 days of the recompletion of any well. Rules 82-3-107 and 82-3-141 apply. Information on side two of this form will be held confidential for a period of 12 months if requested in writing and submitted with the form. See rule 82-3-107 for confidentiality in excess of 12 months. One copy of any additional wireline logs and driller's time logs (not previously submitted) shall be attached with this form. Submit ACO-4 or ACO-5 prior to or with this form for approval of commingling or dual completions. Submit CP-1 with all plugged wells. Submit CP-111 with all temporarily abandoned wells. NOTE: Conversion of wells to either disposal or injection must receive approval before use; submit form U-1.

All requirements of the statutes, rules and regulations promulgated to regulate the oil and gas industry have been fully complied with and the statements herein are complete and correct to the best of my knowledge.

Signature William Short Title General Manager Date 8/23/2000

Subscribed and sworn to before me this 23 day of August 2000

Notary Public Cathy A Lee Date Commission Expires 10-30-2000



SIDE TWO

Operator Name W. D. Short Lease Name South Leesburg Well # 103  
Sec. 13 Twp. 25 Rge. 13  East  West  
County Stafford

RECOMPLETION FORMATION DESCRIPTION

Log  Sample

Name Topeka Lime Top 3057 Bottom 3100

ADDITIONAL CEMENTING/SQUEEZE RECORD

Purpose:	Depth		Type of Cement	# Sacks Used	Type and Percent Additives
	Top	Bottom			
<input checked="" type="checkbox"/> Perforate	3069	70	Common	150	None
<input type="checkbox"/> Protect Casing	3220	21	Common	100	None
<input type="checkbox"/> Plug Back TD					
<input type="checkbox"/> Plug Off Zone					

PERFORATION RECORD

Shots Per Foot	Specify Footage of Each Interval Perforated	Acid, Fracture, Shot, Cement Squeeze Record (Amount and Kind of Material Used)
2	3078-3082	

PBTD 3180 Plug Type Cement Retainer

TUBING RECORD

Size 2-3/8 Set At 3040 Packer At 3040 Was Liner Run Y No N

Date of Resumed Production, Disposal or Injection \_\_\_\_\_

Estimated Production Per 24 Hours Oil \_\_\_\_\_ Bbls. Water \_\_\_\_\_ Bbls. Gas-Oil-Ratio \_\_\_\_\_

Disposition of Gas:

Vented  Sold  Used on Lease (If vented, submit ACO-18.)

WELL COMPLETION

15-185-10098-00-01

Type: Tubing & Packer ; Packerless (tubing) ; Tubingless

	CONDUCTOR	SURFACE	INTERMEDIATE	PRODUCTION	TUBING
SIZE		8 5/8		4 1/2	2 3/8
SETTING DEPTH		322		4120	<del>3003</del>
AMOUNT OF CEMENT		150		200 SXS	3003
TOP OF CEMENT		Surface		2320	
BOTTOM OF CEMENT		322		4120	

If Alternate II cementing, complete the following:

Perforations/D.V. Tool at \_\_\_\_\_ feet, cemented to \_\_\_\_\_ feet with \_\_\_\_\_ sx.

TUBING: Type 2 3/8 EUE Duo-lined Grade Used

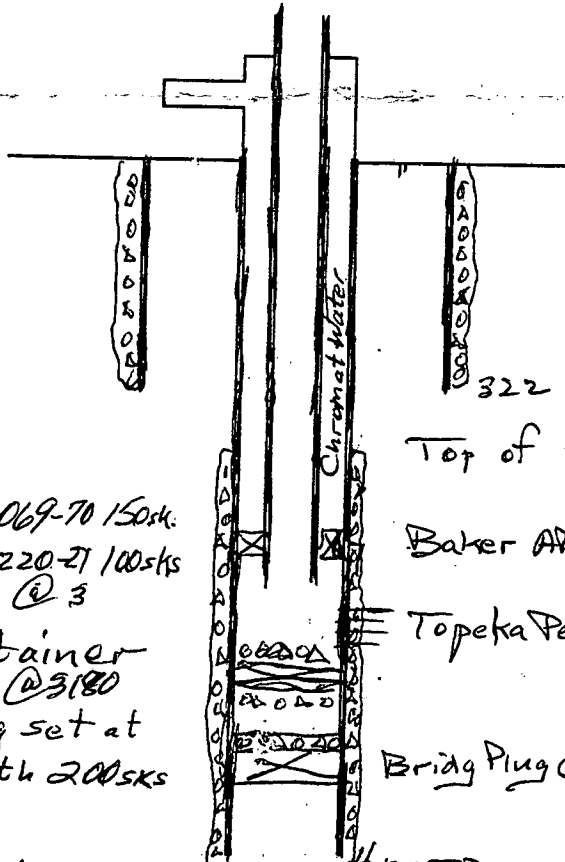
PACKER: Type Baker AD-1 Depth ~~3003~~ 3003

ANNULUS CORROSION INHIBITOR: Type Chromate Concentration .06%

LIST LOGS ENCLOSED: G-R Neutron, Drillers log, Cementon, Temp Surv.

WELL SKETCH

(To sketch installation, darken appropriate lines, indicate cement, and show depths.)



Squeeze 3069-70 150sks  
 Squeeze 3220-21 100sks @ 3  
 Cement Retainer @ 3180  
 4 1/2" Csg set at 4120 Cmt with 200sks

322 of 8 5/8" csg cemented with 150sks  
 Top of Cement 2320  
 Baker AD-1 Set @ ~~3003~~ 3003  
 Topeka Perf 3078-83  
 Bridg Plug @ 3543

Static fluid level is 1900 feet below surface.

RECEIVED  
 STATE CORPORATION COMMISSION  
 AUG 25 2000  
 CONSERVATION DIVISION  
 Wichita Kansas