

TYPE

NOTICE OF INTENTION TO DRILL

C-1

TO BE FILED WITH THE STATE CORPORATION COMMISSION
PRIOR TO COMMENCEMENT OF WELL

API Number 15-099-20,410
(For office use only)

06-00

1. Operator Spradling Drilling Company

Starting Date 12-4-75

County Labette

Address Rte. 1, Hermitage, Mo. 65665

Sec 9 Twp 33 S Rge 21 ^E/_W

2. Contractor same

Spot Location NW SE NW

Address _____

Nearest Lease Line 600 ft.

3. Type of Equipment: Rotary X Cable Tool _____

4. Well to be Drilled for: Oil _____ Gas _____

Lease Name Heskett et al

Disposal _____ Input _____ Other strat.

5. Depth of Deepest Fresh Water within 1 mile 20 ft.

Well No. 4

6. Depth of Municipal Water Well within 3 miles none ft.

7. Depth to Protect all Fresh Water 20 ft.

Est. Total Depth 800 ft.

8. Amount of Surface Casing to be set 20 ft.

9. Alternate No. 1 _____ No. 2 X

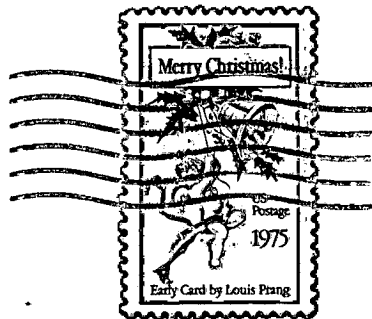
REMARKS: La-36

OPERATOR STATES THAT HE WILL COMPLY WITH K. S. A. 55-128

Signature of Operator B. J. Spradling



[Handwritten initials]
849.H



State Corporation Commission of Kansas
Conservation Division
P. O. Box 17027
Wichita, Kansas 67217

12-5-75
RECEIVED
STATE CORPORATION COMMISSION

DEC 5 1975

CONSERVATION DIVISION
Wichita, Kansas

(IF PREFERRED, MAIL IN ENVELOPE)