

TYPE

# NOTICE OF INTENTION TO DRILL

C-1

TO BE FILED WITH THE STATE CORPORATION COMMISSION  
PRIOR TO COMMENCEMENT OF WELL

API Number 15-099-20,411-  
(For office use only) 06-00

1. Operator Spradling Drilling Company

Starting Date 12-7-75

County Labette

Sec 9 Twp 33 S Rge 21 <sup>E</sup>/<sub>W</sub>

Spot Location SE NE NW

Nearest Lease Line 600 ft.

Lease Name Heskett et al

Well No. 5

Est. Total Depth 800 ft.

Address Rte. 1, Hermitage, Mo. 65665

2. Contractor same

Address \_\_\_\_\_

3. Type of Equipment: Rotary  Cable Tool \_\_\_\_\_

4. Well to be Drilled for: Oil \_\_\_\_\_ Gas \_\_\_\_\_

Disposal \_\_\_\_\_ Input \_\_\_\_\_ Other strat.

5. Depth of Deepest Fresh Water within 1 mile 20 ft.

6. Depth of Municipal Water Well within 3 miles none ft.

7. Depth to Protect all Fresh Water 20 ft.

8. Amount of Surface Casing to be set 20 ft.

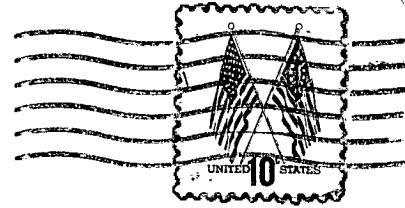
9. Alternate No. 1 \_\_\_\_\_ No. 2

REMARKS: La-37

OPERATOR STATES THAT HE WILL COMPLY WITH K. S. A. 55-128

Signature of Operator B. J. Spradling





**State Corporation Commission of Kansas**  
**Conservation Division**  
**P. O. Box 17027**  
**Wichita, Kansas 67217**

*12-8-75*  
RECEIVED  
STATE CORPORATION COMMISSION  
DEC 8 1975

CONSERVATION DIVISION  
Wichita, Kansas

(IF PREFERRED, MAIL IN ENVELOPE)