

TYPE

NOTICE OF INTENTION TO DRILL

C-1

TO BE FILED WITH THE STATE CORPORATION COMMISSION
PRIOR TO COMMENCEMENT OF WELL

API Number 15-099-20412-
(For office use only) 00-00

1. Operator Spradling Drilling Company

Starting Date Dec. 9, 75

County Labette

Address Rte. 1, Hermitage, Mo. 65665

Sec 9 Twp 33 S Rge 21 ^E _W

2. Contractor same

Spot Location 10'E SE NE NW

Address _____

3. Type of Equipment: Rotary Cable Tool _____

Nearest Lease Line 650 ft.

4. Well to be Drilled for: Oil _____ Gas _____

Lease Name Heskett et al

Disposal _____ Input _____ Other strat.

5. Depth of Deepest Fresh Water within 1 mile 20 ft.

Well No. 6

6. Depth of Municipal Water Well within 3 miles none ft.

7. Depth to Protect all Fresh Water 20 ft.

Est. Total Depth 800 ft.

8. Amount of Surface Casing to be set 20 ft.

9. Alternate No. 1 _____ No. 2

REMARKS: La-38

OPERATOR STATES THAT HE WILL COMPLY WITH K. S. A. 55-128

Signature of Operator

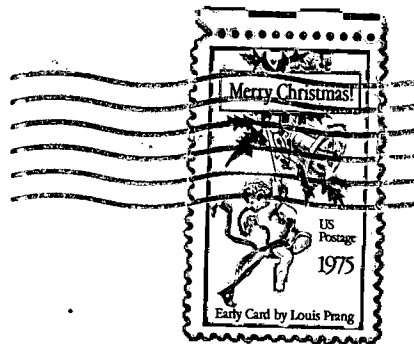
B. J. Spradling 



RECEIVED
STATE CORPORATION COMMISSION

DEC 10 1975

CONSERVATION DIVISION
Wichita, Kansas



State Corporation Commission of Kansas
Conservation Division
P. O. Box 17027
Wichita, Kansas 67217

RECEIVED
STATE CORPORATION COMMISSION

DEC 9 1975

12-9-75

CONSERVATION DIVISION
Wichita, Kansas

(IF PREFERRED, MAIL IN ENVELOPE)