

TYPE

NOTICE OF INTENTION TO DRILL

C-1

TO BE FILED WITH THE STATE CORPORATION COMMISSION
PRIOR TO COMMENCEMENT OF WELL

API Number 15-099-20,419-1
(For office use only)

00/00

1. Operator Spradling Drilling Company

Starting Date 1-23-76

County Labette

Address Rte. 1, Hermitage, Mo. 65668

Sec. 9 Twp. 33 S Rge. 21 ^EW

2. Contractor same

Spot Location NW NE NW

Address _____

Nearest Lease Line 25 ft.

3. Type of Equipment: Rotary Cable Tool _____

4. Well to be Drilled for: Oil _____ Gas _____

Lease Name Henery #1

Disposal _____ Input _____ Other strat.

5. Depth of Deepest Fresh Water within 1 mile 20 ft.

Well No. 1

6. Depth of Municipal Water Well within 3 miles none ft.

7. Depth to Protect all Fresh Water 20 ft.

Est. Total Depth 800 ft.

8. Amount of Surface Casing to be set 20 ft.

9. Alternate No. 1 _____ No. 2

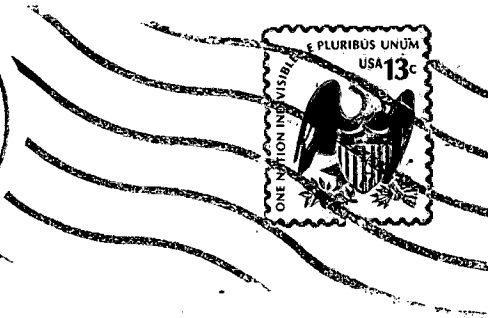
REMARKS: La-43

OPERATOR STATES THAT HE WILL COMPLY WITH K. S. A. 55-128

Signature of Operator

B. J. Spradling





**State Corporation Commission of Kansas
Conservation Division**

~~Box 1007~~

245 North Water

Wichita, Kansas ~~67202~~ 67202

126-76

RECEIVED
STATE CORPORATION COMMISSION

JAN 26 1976

CONSERVATION DIVISION
Wichita, Kansas

(IF PREFERRED, MAIL IN ENVELOPE)