

KANSAS CORPORATION COMMISSION
OIL & GAS CONSERVATION DIVISION
WELL PLUGGING APPLICATION
Please TYPE Form and File ONE Copy

Form CP-1
September 2003
This Form must be Typed
Form must be Signed
All blanks must be Filled

API # 15 - 035-21269 - 00-00 (Identifier Number of this well). This must be listed for wells drilled since 1967; if no API # was issued,

indicate original spud or completion date spud date 08-03-77

Well Operator: Gen-Dor Oil Company KCC License #: 9576
(Owner / Company Name) (Operator's)

Address: 8135 281st rd City: Cambridge

State: Kansas Zip Code: 67023 Contact Phone: (620) 467 - 2615

Lease: Satterthwaite Well #: 3 Sec. 10 Twp. 31 S. R. 3 East West

C - W/2 - E/2 - NE Spot Location / QQQQ County: Cowley

1320 Feet (in exact footage) From North / South (from nearest outside section corner) Line of Section (Not Lease Line)

990 Feet (in exact footage) From East / West (from nearest outside section corner) Line of Section (Not Lease Line)

Check One: Oil Well Gas Well D&A Cathodic Water Supply Well
 SWD Docket # _____ ENHR Docket # _____ Other: _____

Conductor Casing Size: none Set at: _____ Cemented with: _____ Sacks

Surface Casing Size: 8 5/8 Set at: 202 Cemented with: 90 Sacks

Production Casing Size: 5 1/2 Set at: 3054 Cemented with: 75 Sacks

List (ALL) Perforations and Bridgeplug Sets: perfs are from 3006 to 3010

Elevation: 1225 (G.L. / K.B.) T.D.: 3055 PBTD: 3016 Anhydrite Depth: unknown
(Stone Corral Formation)

Condition of Well: Good Poor Casing Leak Junk in Hole

Proposed Method of Plugging (attach a separate page if additional space is needed): fill bottom of well with gravel to 50 feet above the perfs and dump bael 6sx of cement on top of the gravel, shoot off casing and pull it out of the well bore and circulate cement from a depth to surface as required by the Kansas Corporation Commission

Is Well Log attached to this application as required? Yes No Is ACO-1 filed? Yes No

If not explain why? we did not get an E-log with the files, I am sending copies of the core analysis and the geologist log and report

Plugging of this Well will be done in accordance with K.S.A. 55-101 et. seq. and the Rules and Regulations of the State Corporation Commission.

List Name of Company Representative authorized to be in charge of plugging operations: (Ron Whiteman cell # 620-222-4316)

Brent Whiteman (home # 620-394-2841) cell # >>>>> Phone: (620) 222 - 7808

Address: 3777 251st rd City / State: Atlanta, Kansas 67008

Plugging Contractor: Gen-Dor Oil Company KCC License #: 9576
(Company Name) (Contractor's)

Address: 8135 281st rd, Cambridge Kansas 67023 Phone: (620) 467 - 2615

Proposed Date and Hour of Plugging (if known?): someone will call in when we are ready to commence plugging of the well

Payment of the Plugging Fee (K.A.R. 82-3-118) will be guaranteed by Operator or Agent

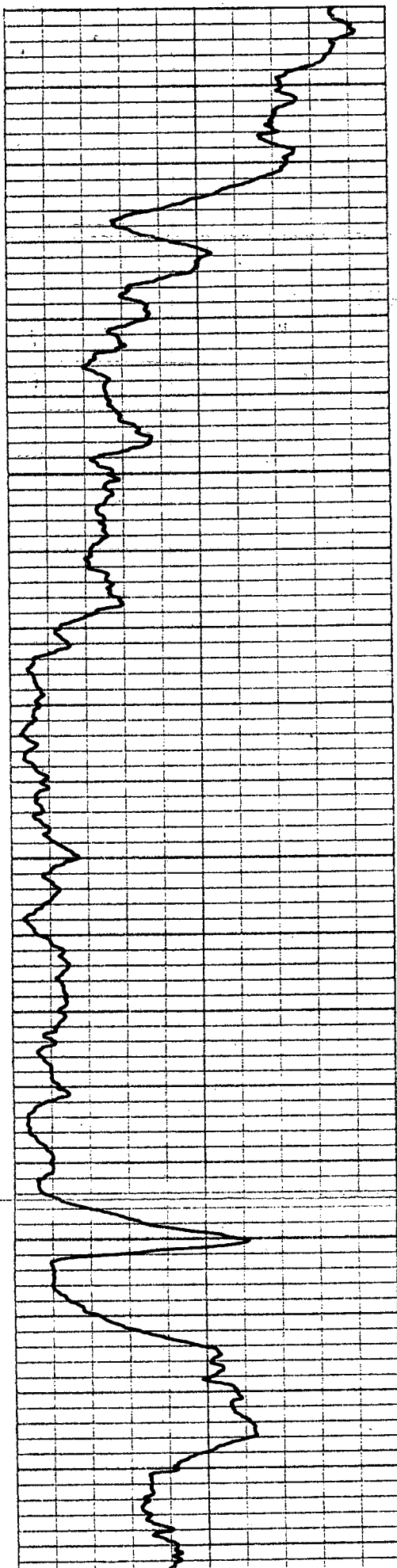
Date: 4/7/2008 Authorized Operator / Agent: Brent Whiteman
(Signature)

Mall to: KCC - Conservation Division, 130 S. Market - Room 2078, Wichita, Kansas 67202

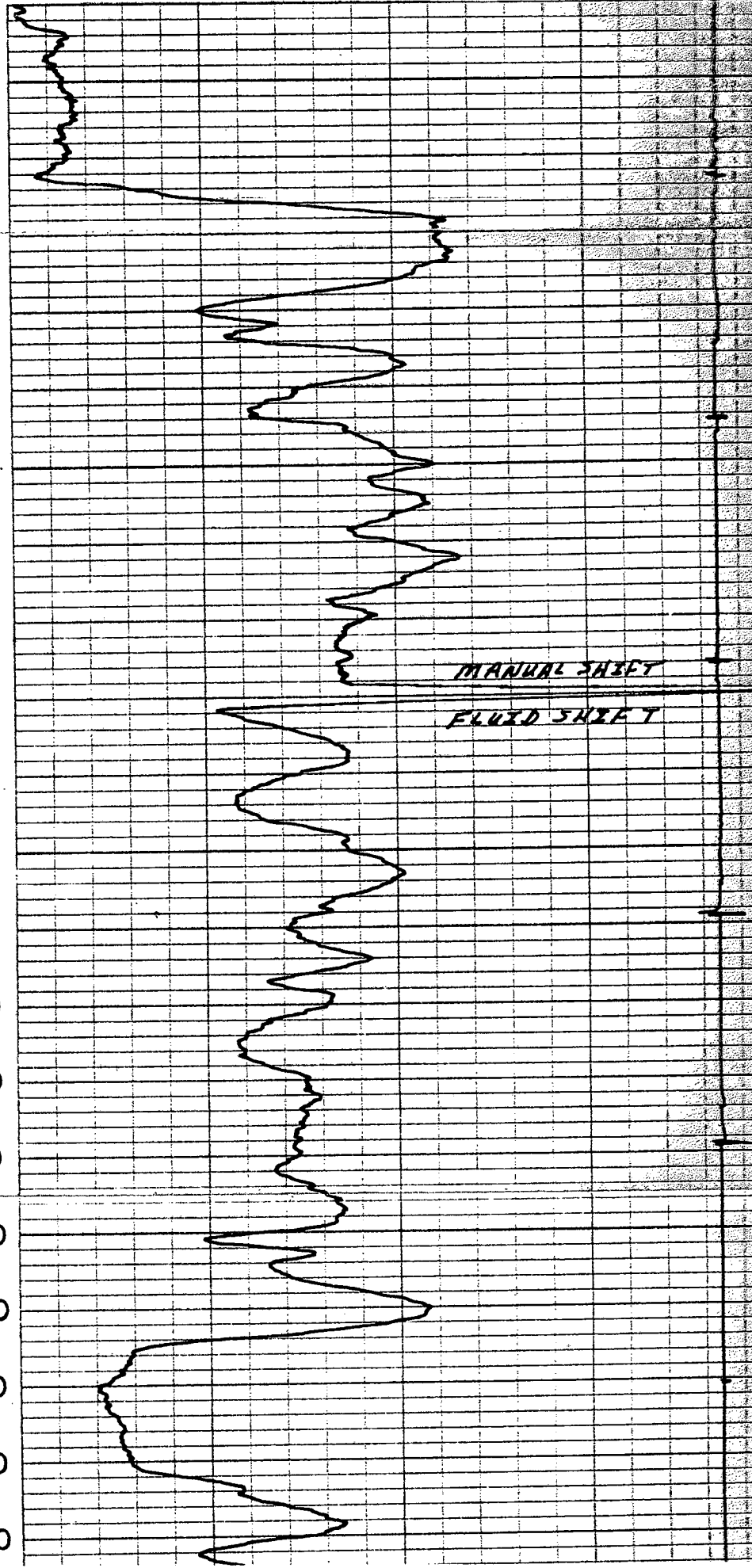
RECEIVED
KANSAS CORPORATION COMMISSION

APR 08 2008

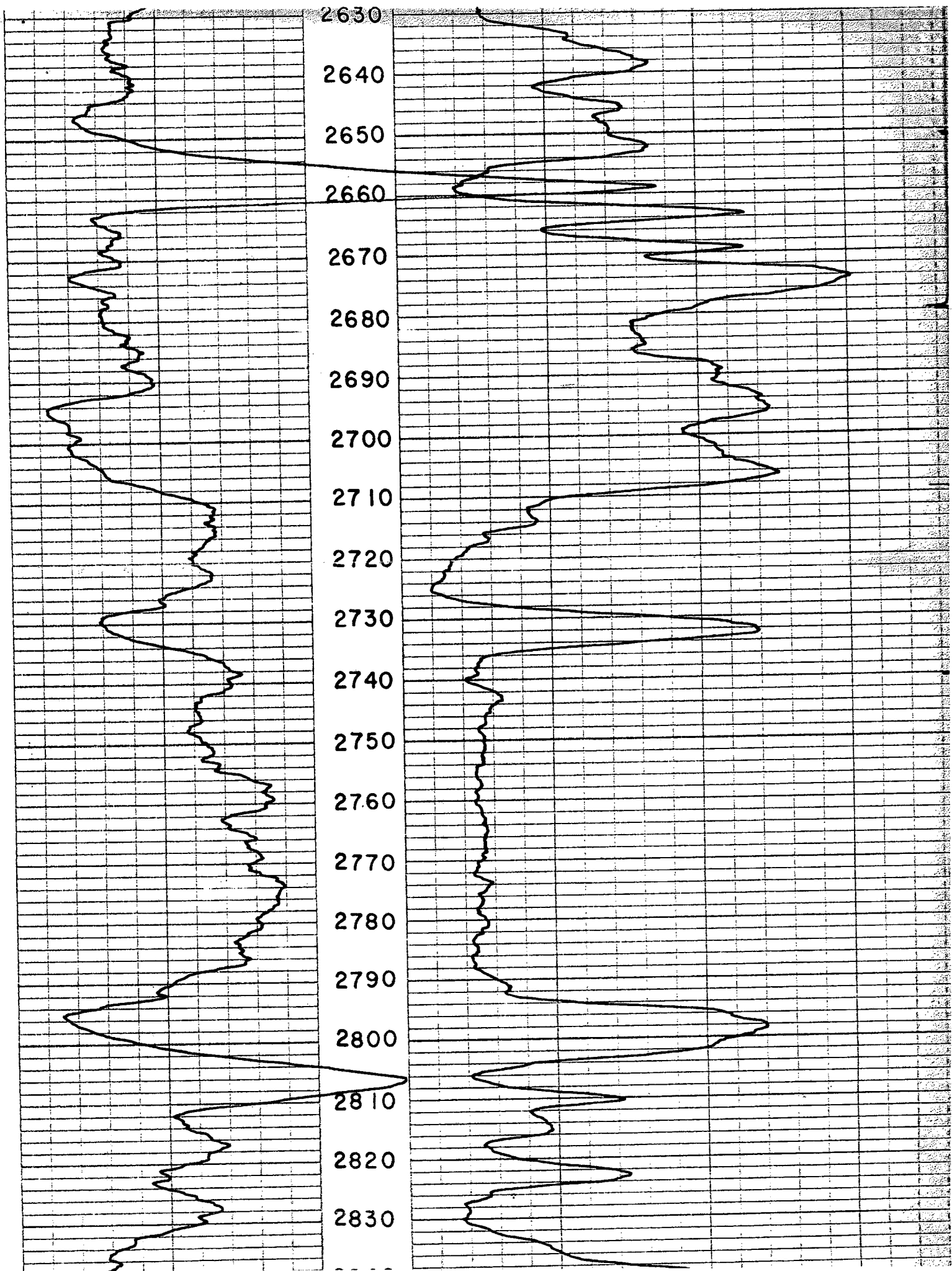
CONSERVATION DIVISION
WICHITA, KS

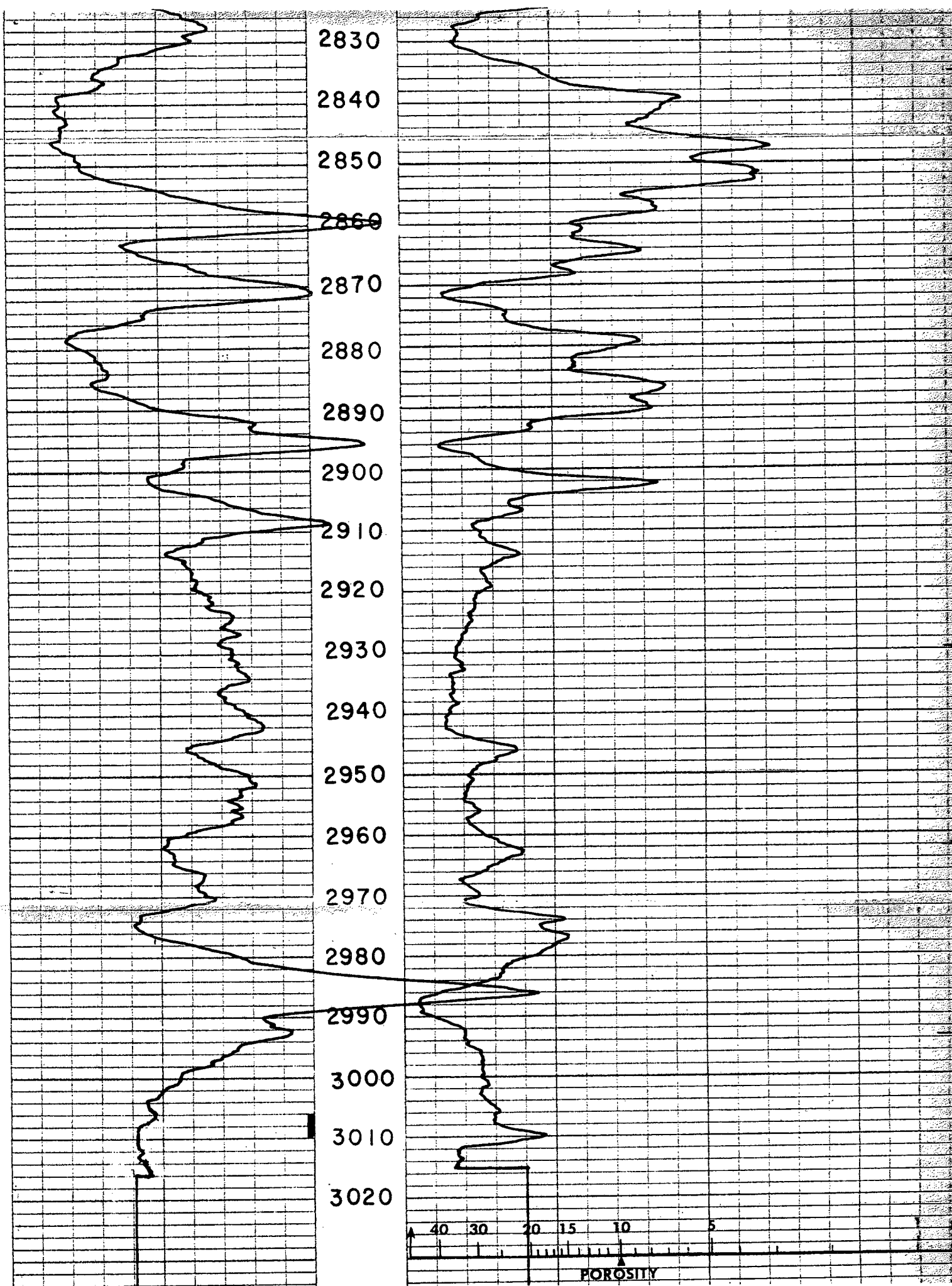


2450
2460
2470
2480
2490
2500
2510
2520
2530
2540
2550
2560
2570
2580
2590
2600
2610
2620
2630
2640



MANUAL SHEET
FLUID SHEET





T. G. WRIGHT

Consulting Geologist

620 FOURTH FINANCIAL CENTER

WICHITA, KANSAS 67202

August 8, 1977

GEOLOGICAL WELL REPORT

Brunson-Spines #3

Satterthwaite, C W/2 E/2 NE

Section 10-T31S-R3E,

Mowder Waterflood, Cowley

County, Kansas

Contractor: White & Ellis Drilling, Inc.

Spud: August 3, 1977

8-5/8" Surface Casing @ 202'

5-1/2" Production Casing @ 3054'

Total Depth: 3055'

Brunson-Spines, Inc.
615 Fourth Financial Center
Wichita, Kansas 67202

Gentlemen:

Listed below are the pertinent geological tops, and an evaluation of the porosities encountered, including a description of a Bartlesville Sand core.

I arrived at the location at a depth of 2936' and witnessed the drilling from that point to T.D. 3055'. Samples were examined from 2500-3055 T.D. The hole was not logged electrically before being cased and no drill stem tests were taken.

Enclosed herewith is a copy of the plotted drilling time log from 2500-3055' T.D., which also includes lithology, tops and other pertinent data.

SAMPLE TOPS

ELEVATION 1225 K.B. (Private Elevation)

ZONE WITHIN THE KANSAS CITY

2575-2602

Limestone, tan oolitic to oolitic, good interoolitic porosity and oolitic porosity. Also good cavernous porosity in dolomitic limestone. No show.

BASE OF KANSAS CITY 2723 (-1498)

CHEROKEE 2928 (-1703)

RECEIVED
KANSAS CORPORATION COMMISSION

APR 08 2008

CONSERVATION DIVISION
WICHITA, KS

Brunson-Spines, Inc.
Brunson-Spines #3
Page Two
August 8, 1977

BARTLESVILLE SAND	3010	(-1785)
3010-3012	Fairly clean, Clustered, fine oil stained Sandstone.	
DIAMOND CORE #1	3012-3025'	Recovered 12'/13'
3012-3013	Sandstone, fine, dirty, micaceous, streaks of staining, slightly bleeding.	
3013-3015	Sandstone, fine, fairly clean, fairly friable, completely oil stained, good odor, good fluorescence.	
3015-3018	Much as above, Sandstone, cleaner, more friable, more porous, completely oil stained, streaks of bleeding, live oil, good fluorescence.	
3018-3020	Dark, compact, micaceous, shale, thin streaks and seams of fine sandstone, oil stained and fluorescence, bleeding zone 3018-3019.	
3020-3022	Sandstone, medium fine, fairly clean, except for shale inclusions, friable, oil stained, good odor and fluorescence.	
3022-3024	Dark, compact, micaceous, shale, inclusions of oil stained sandstone.	
(3024-3025	Probably dark shale - Not recovered)	
BASE OF BARTLESVILLE SAND	3023	(-1798)
TOTAL DEPTH:	3055'	

Conclusions and Recommendations

This development well within the "flood area" was drilled between two plugged out producers on the original development of the pool. When compared to the wells on either side of this well the #3 compares favorable structurally and the Bartlesville Sand as described in Core #1 has a relatively good development of five to eight feet of potentially productive sand.

RECEIVED
KANSAS CORPORATION COMMISSION

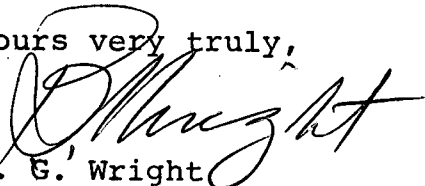
APR 08 2008

CONSERVATION DIVISION
WICHITA, KS

Brunson-Spines, Inc.
Brunson-Spines #3
Page Three
August 8, 1977

The reservoir appears sufficiently well developed and the "show of oil" sufficiently good to justify casing this hole to test the Bartlesville.

Yours very truly,


T. G. Wright

TGW:sas

DRILLING PROGRESS

8-3	200
8-4	700
8-5	1930
8-6	2835
8-7	3055 TD 5-1/2" WOC

BIT RECORD

Smith F²

200-3055 TD

KANSAS

CORPORATION COMMISSION

Kathleen Sebelius, Governor Thomas E. Wright, Chairman Michael C. Moffet, Commissioner Joseph F. Harkins, Commissioner

NOTICE OF RECEIPT OF WELL PLUGGING APPLICATION (CP-1)

WHITEMAN, RON DBA GEN-DOR OIL CO.
8135 281ST RD
CAMBRIDGE, KS 67023-9308

May 02, 2008

Re: SATTERTHWAITE #3
API 15-035-21269-00-00
10-31S-3E, 3960 FSL 990 FEL
COWLEY COUNTY, KANSAS

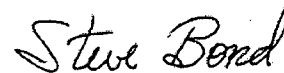
Dear Operator:

This letter is to notify you that the Conservation Division has received your plugging proposal, form CP-1, for the above well and has reviewed the proposal for completeness. The central office will now forward your CP-1 to the district office listed below for review of the proposed plugging method. **Please contact the district office for approval of your proposed plugging method at least five (5) days before plugging the well, pursuant to K.A.R. 82-3-113(b). If a workover pit will be used during the plugging of the well it must be permitted. A CDP-1 form must be filed and approved prior to the use of the pit in accordance with K.A.R. 82-3-600.**

The Conservation Division's review of form CP-1, either in the central or district office, does not include an inquiry into well ownership or the filing operator's legal right to plug the well. This notice in no way constitutes authorization to plug the above well by persons not having legal rights of ownership or interest in the well.

This notice is void after October 29, 2008. The CP-1 filing does not bring the above well into compliance with K.A.R. 82-3-111 with regard to the Commission's temporary abandonment requirements.

Sincerely,



Steve Bond

Production Department Supervisor

District: #2
3450 N. Rock Road, Suite 601
Wichita, KS 67226
(316) 630-4000