

KANSAS CORPORATION COMMISSION
OIL & GAS CONSERVATION DIVISION
WELL PLUGGING APPLICATION
Please TYPE Form and File ONE Copy

Form CP-1
September 2003
This Form must be Typed
Form must be Signed
All blanks must be Filled

API # 15 - 035-30201-00-00 (Identifier Number of this well). This must be listed for wells drilled since 1967; if no API # was issued,

indicate original spud or completion date spud date 06-17-66

Well Operator: Gen-Dor Oil Company KCC License #: 9576
(Owner / Company Name) (Operator's)

Address: 8135 281st rd City: Cambridge

State: Kansas Zip Code: 67023 Contact Phone: (620) 467 - 2615

Lease: Mowder Well #: 6 Sec. 10 Twp. 31 S. R. 3 East West

App - SW - NW - SE Spot Location / QQQQ County: Cowley

1980 Feet (in exact footage) From North / South (from nearest outside section corner) Line of Section (Not Lease Line)

2500 Feet (in exact footage) From East / West (from nearest outside section corner) Line of Section (Not Lease Line)

Check One: Oil Well Gas Well D&A Cathodic Water Supply Well
 SWD Docket # _____ ENHR Docket # _____ Other: _____

Conductor Casing Size: none Set at: _____ Cemented with: _____ Sacks

Surface Casing Size: 10 3/4 Set at: 210 Cemented with: unknown Sacks

Production Casing Size: 7 Set at: 2330 Cemented with: 100 Sacks

List (ALL) Perforations and Bridgeplug Sets: perfs are unknown

Elevation: 1252 (G.L. / K.B.) T.D.: 3078 PBTD: 2303 Anhydrite Depth: unknown
(Stone Corral Formation)

Condition of Well: Good Poor Casing Leak Junk in Hole

Proposed Method of Plugging (attach a separate page if additional space is needed): fill bottom of well with gravel to 50 feet above the top (2122) of the Stalnakier and dump ¹⁰ bag of cement on top of the gravel, shoot off casing and pull it out of the well bore and circulate cement from a depth to surface as required by the Kansas Corporation Commission

Is Well Log attached to this application as required? Yes No Is ACO-1 filed? Yes No

If not explain why? _____

Plugging of this Well will be done in accordance with K.S.A. 55-101 et. seq. and the Rules and Regulations of the State Corporation Commission.

List Name of Company Representative authorized to be in charge of plugging operations: (Ron Whiteman cell # 620-222-4316)

Brent Whiteman (home # 620-394-2841) cell # >>>> Phone: (620) 222 - 7808

Address: 3777 251st rd City / State: Atlanta, Kansas 67008

Plugging Contractor: Gen-Dor Oil Company KCC License #: 9576
(Company Name) (Contractor's)

Address: 8135 281st rd, Cambridge Kansas 67023 Phone: (620) 467 - 2615

Proposed Date and Hour of Plugging (if known?): someone will call in when we are ready to commence plugging of the well

Payment of the Plugging Fee (K.A.R. 82-3-118) will be guaranteed by Operator or Agent

Date: 4/7/2008 Authorized Operator / Agent: Brent Whiteman
(Signature)

RECEIVED
KANSAS CORPORATION COMMISSION

Mail to: KCC - Conservation Division, 130 S. Market - Room 2078, Wichita, Kansas 67202

APR 08 2008

CONSERVATION DIVISION
WICHITA, KS

Total Rotary Depth 3019
 Comm. Rotary 11-21-52
 Comp. Rotary 12-4-52

SE SW NE
 Sec. 10-31-3E
 Cowley Co. Kans.

Cable Tools
 Total Depth 3039½
 Comm. 12-18-52
 Comp. 12-30-52

Cementing Record
 8 5/8" Surface pipe w/90 Sx.
 5 1/2" Casing w/40 Sx.
 United Cementing Company

Formations:
 Top K.C. 2489
 Base K.C. 2751
 Top Marm. 2809
 Top Cherokee 2925
 Top Bart. 3017

Casing Record
 8 5/8" Surface 135'
 5 1/2" Oil String 3006'
 3018

98 jts. 15.5# SS Csg. Rge 2

Figures Indicate Bottom of Formations
 Rotary Bushing 4.8' above ground level

EI 1237.8 KB

clay	6	shale-shells	1280
lime	21	lime-shale brks	1412
lime & shale	29	lime	1460
lime	38	lime-shale brks	1720
broken lime & shale	76	shale-lime	1803
shale	91	lime	1820
lime	94	lime & shale	1935
sand	103	shale	2055
shale	120	sandy shale	2165
Red Bed	134	sand	2235
lime	136	shale & sand	2315
lime & shale brks	376	shale	2487
shale	395	lime	2723
lime & shale brks	480	shale	2760
		shale & lime	2975
		shale	2917
		sand	3019 TD

DRILLING-IN-DATA

12-18-52
 Swabbed & drilled cement

12-20-52
 3019 - 3021 38 Min. Good show gas
 3021 - 3024 20 Min.

12-21-52
 3024 - 3026 21 Min.
 3026 - 3028 14 Min.
 3028 - 3029 17 Min.
 3029 - 3030 13 Min. 2" water - very light show oil

12-22-52
 3030 - 3032 13 Min.
 3032 - 3033 10 Min. Correction SLM 3039½. Increase in oil last 3'
 Fluid in hole 276' oil 1" water

12-23-52
 Fluid level 855' 8:30 A.M.

12-26-52
 Fluid level 892' 9:00 A.M.
 Drove 25 lb. lead wool in bottom fill up to 3039
 Received 93 bbl. oil.

RECEIVED
 KANSAS CORPORATION COMMISSION

APR 08 2008

CONSERVATION DIVISION
 WICHITA, KS

shale	91	lime	1820
lime	94	lime & shale	1935
sand	103	shale	2055
shale	120	sandy shale	2165
Red Bed	134	sand	2235
lime	136	shale & sand	2315
lime & shale brks	376	shale	2487
shale	395	lime	2723
lime & shale brks	480	shale	2760
		shale & lime	2975
		shale	2017
		sand	3019

DRILLING-IN-DATA

12-18-52
Swabbed & drilled cement

12-20-52
3019 - 3021 38 Min. Good show gas
3021 - 3024 20 Min.

12-21-52
3024 - 3026 21 Min.
3026 - 3028 14 Min.
3028 - 3029 17 Min.
3029 - 3030 13 Min. 2" water - very light show oil

12-22-52
3030 - 3032 13 Min.
3032 - 3033 10 Min. Correction SLM 3039½. Increase in oil last 3'
Fluid in hole 276' oil 1" water

12-23-52
Fluid level 855' 8:30 A.M.

12-26-52
Fluid level 892' 9:00 A.M.
Drove 25 lb. lead wool in bottom fill up to 3039
Received 93 bbl. oil.

12-27-52
Fluid level 925' 8:00 A.M. oil
Hydrafrac "Double Whamee" 190 bbls/ hauled from Elam Stayton to hydra.

12-28-52
Fluid level 745' 9:30 A.M. Swabbed & bailed

12-29-52
Fluid level 633' 8:30 A.M.
Run rods & tubing.

RECEIVED
KANSAS CORPORATION COMMISSION

APR 08 2008

CONSERVATION DIVISION
WICHITA, KS

T. G. WRIGHT
CONSULTING GEOLOGIST
805 WICHITA PLAZA
WICHITA, KANSAS 67202

June 23, 1966

Re: GEOLOGICAL WELL REPORT
Brunson-Spines #6 Mowder
Approx. SW NW SE Section 10-T31S-R3E
Mowder Waterflood
Cowley County, Kansas
Contractor: White & Ellis Drilling, Inc.
Spud: June 17, 1966
10-3/4" surface casing @ 210'
7" production casing @ 2330'
Total Depth: 3078'

Brunson-Spines
800 Wichita Plaza
Wichita, Kansas 67202

Gentlemen:

Listed below are the pertinent geological tops, an evaluation of the porosities encountered and a description of a Diamond Core taken in the Bartlesville Sand. The hole was not logged electrically before being cased and no drill stem tests were made.

I arrived at the location at a depth of 3017' and witnessed the drilling and coring to 3078' TD. Samples were examined from 2100-3068' TD.

Enclosed herewith is a copy of the plotted drilling time log which also includes lithology and other pertinent data.

Geological Tops

ELEVATION:	1252 KB
STALNAKER SAND	2129 (- 877)
	2129-2260 Sandstone, fine to medium coarse, angular, clustered to loose varying porosity but sections of excellent porosity, no show of oil, looks like a good water sand.
KANSAS CITY	2524 (-1272)
BASE OF KANSAS CITY	2759 (-1507)
CHEROKEE	2960 (-1708)

RECEIVED
KANSAS CORPORATION COMMISSION

APR 08 2008

CONSERVATION DIVISION
WICHITA, KS

Brunson-Spines
#6 Mowder
Page Two

BARTLESVILLE SAND 3054 (-1802)
BASE OF SAND 3068 (-1816)
TOTAL DEPTH 3078 (-1826)

DIAMOND CORE #1

3045-78 Recovery 32'/33'
3045-48 Shale, gray, compact.
3048-49 Shale, gray, calcareous, micaceous, silty.
3049-50 Shale, gray, calcareous.
3050-52 Shale, gray, micaceous, calcareous, thin silty seams
with oil staining.
3052-53 Shale, gray, micaceous, 2" streak of fine, calcareous
oil stained sandstone.
3053-54 As above, with thin silty seams, oil stained.
3054-55 Sandstone, medium fine grained, fair porosity, good
staining of oil, thin seams of shale and mud balls.
3055-56 Sandstone, medium grained, well oil stained, fair porosity.
3056-57 Tighter than above, more shaley but completely oil stained.
3057-58 Medium grained sandstone, fair porosity, oil stained
throughout. (Bleeding oil 3054-58).
3058-61 Sandstone, medium grained, fair porosity, good oil staining
throughout.
3061-64 As above, except more friable and possibly more porous.
3064-68½ As above but more micaceous. (Bleeding oil 3064-68½.)
3068½-74 Black, pyritic shale.
3074-75 Coal
3075-76 Black shale
3076-77 Gray marly shale

RECEIVED
KANSAS CORPORATION COMMISSION

APR 08 2008

Conclusions and Recommendations

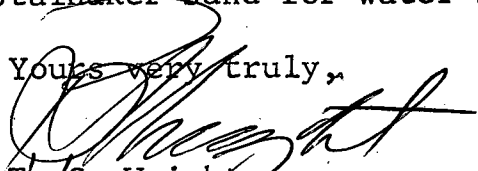
CONSERVATION DIVISION
WICHITA, KS

This well at the top of the Bartlesville Sand is 16 feet lower than your #3 well to the south and 6 feet lower than your #5 well to the east.

It is understood that this hole is to be used for water supply from the Stalnaker Sand. From sample evidence the Stalnaker Sand should serve as an adequate water supply. The existence of a favorable sand body in the Bartlesville Sand should enhance your flood possibilities on this property.

Casing was run to test the Stalnaker Sand for water supply.

Yours very truly,


T. G. Wright

Brunson-Spines
#6 Mowder

Bit Record

Hughes	OWV	Retip	210- 633
C.P.	EMIV	Retip	633-1196
C.P.	EMIV2	Retip	1196-1620
Security	S4T		1620-2545
Smith	SV2		2545-2740
Smith	K2P		2740-3078 TD

Drilling Progress

6-17	Spud
6-18	500'
6-19	1250'
6-20	2215'
6-21	2740'
6-22	3078' TD WOC

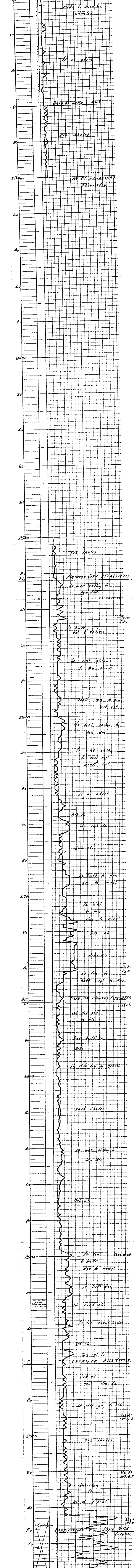
STATE KANSAS
 COUNTY COWLEY
 BLOCK 10

BRUNSON - SPINES
 COMPANY FARM
 FARM MOWDER
 SURVEY APPROX. SW NW SE
 WELL NO. 6

BEC. <u>10</u>		TOTAL DEPTH
T. <u>315.</u>	R. <u>3E</u>	
CONTRACTOR <u>White & Ellis Drilling, Inc.</u>		
COMMENCED <u>JUNE 17, 1966</u>		
COMPLETED <u>ROTARY JUNE 22, 1966</u>		
REMARKS		
ALTITUDE <u>1252 KB</u>		
PRODUCTION		
GEOLOGICAL: <u>76. Wright</u>		

CASING RECORD		
10 3/4"	210	10'
7"		8 1/2"
20"		6 1/2"
15 1/2"		5 1/2"
12 1/2"		
SHOT	QUARTS	BETWEEN

TIME RATE SCALE: 1/10" = MINUTES



3078 TD
 No DSTS
 No Elec Log



RADIOACTIVITY LOG

COMPANY BRUNSON - SPINES
 WICHITA, KANSAS
 WELL MOWDER # 6
 FIELD SMITH - SHAFFER
 COUNTY COWLEY STATE KANSAS
 Location APPROX. SW NW SE Other Services:
 Sec. 10 Twp 31S Rge 3E

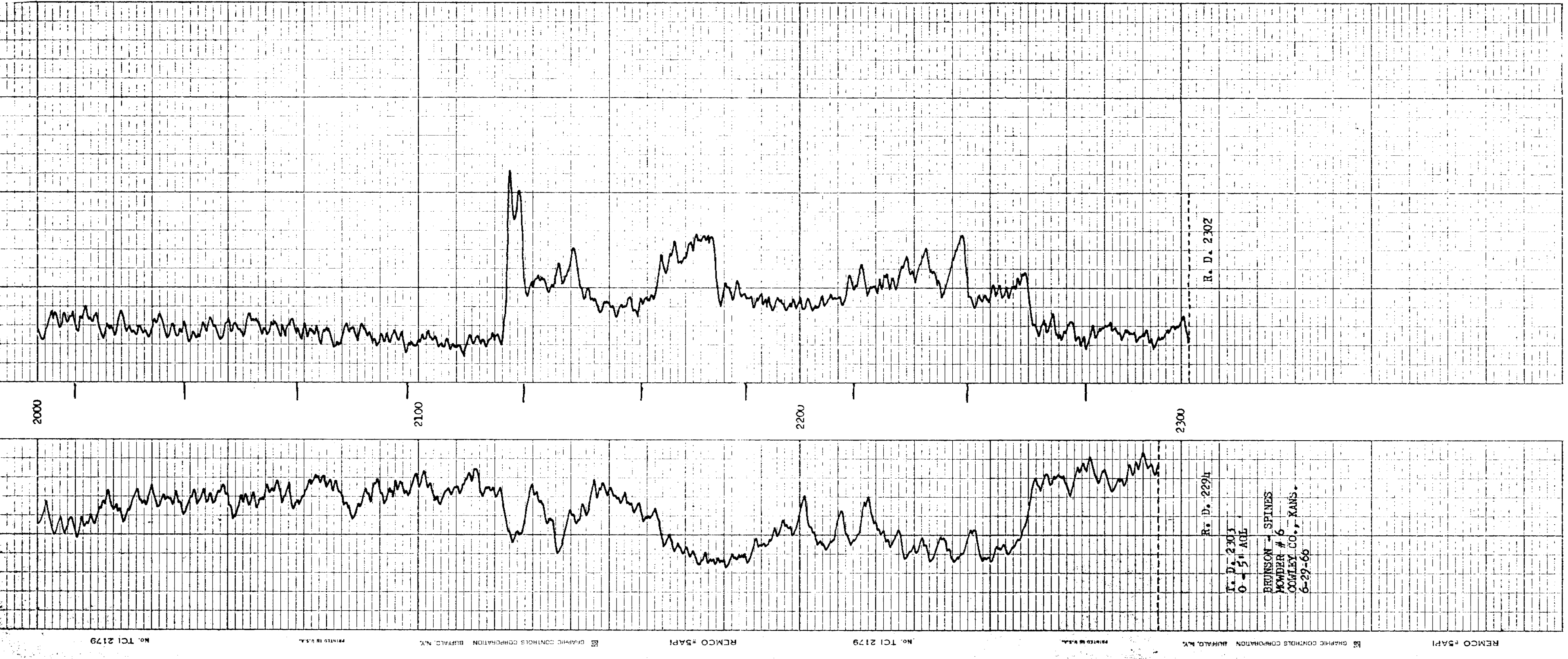
Permanent Datum GROUND LEVEL Elev. 1247' Elev.: K.B. 1252
 Log Measured from K. B. 5 Ft. Above Perm. Datum D.F.
 Drilling Measured From K. B. G.I. 1247

Date 6-29-66
 Run No. ONE
 Type Log GAMMA RAY NEUTRON
 Depth-Driller 2303
 Depth-Logger 2303
 Bottom Logged Interval 2302
 Top Logged Interval 2000
 Type Fluid in Hole WATER
 Salinity, PPM Cl.
 Density
 Level FULL
 Max. rec. temp., deg. F.
 Operating Rig Time 1 HR.
 Recorded By JENKINS
 Witnessed by BRUNSON

RUN No.	BORE-HOLE RECORD			CASING RECORD		
	Bit	From	To	Size	Wgt.	From To
				<u>10 3/4</u>		<u>SURFACE 210'</u>
				<u>7"</u>	<u>23#</u>	<u>SURFACE 2330'</u>

Fold Here

GAMMA RAY		NEUTRON	
Run No. <u>ONE</u>	Run No. <u>ONE</u>	Log Type <u>NU/NI</u>	Log Type <u>NU/NI</u>
Tool Model No. <u>CIN 2710</u>	Tool Model No.	Diameter	Diameter
Diameter <u>1 11/16"</u>	Diameter	Detector Model No.	Detector Model No.
Type <u>GEIGER</u>	Type	Length	Length
Length <u>18"</u>	Length	Source Model No.	Source Model No.
Distance to N. Source <u>9'</u>	Distance to N. Source	Serial No.	Serial No.
Hoist Truck No. <u>710-4</u>	Hoist Truck No.	Spacing	Spacing
Instrument Truck No.	Instrument Truck No.	Type	Type
Tool Serial No.	Tool Serial No.	Strength	Strength



R. D. 2302
 0-5' AGE
 BRUNSON - SPINES
 MOWDER # 6
 COWLEY CO., KANS.
 6-29-66

KANSAS

CORPORATION COMMISSION

Kathleen Sebelius, Governor Thomas E. Wright, Chairman Michael C. Moffet, Commissioner Joseph F. Harkins, Commissioner

NOTICE OF RECEIPT OF WELL PLUGGING APPLICATION (CP-1)

WHITEMAN, RON DBA GEN-DOR OIL CO.
8135 281ST RD
CAMBRIDGE, KS 67023-9308

May 02, 2008

Re: MOWDER #6
API 15-035-30201-00-00
10-31S-3E, 1980 FSL 2500 FEL
COWLEY COUNTY, KANSAS

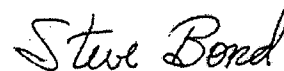
Dear Operator:

This letter is to notify you that the Conservation Division has received your plugging proposal, form CP-1, for the above well and has reviewed the proposal for completeness. The central office will now forward your CP-1 to the district office listed below for review of the proposed plugging method. **Please contact the district office for approval of your proposed plugging method at least five (5) days before plugging the well, pursuant to K.A.R. 82-3-113(b). If a workover pit will be used during the plugging of the well it must be permitted. A CDP-1 form must be filed and approved prior to the use of the pit in accordance with K.A.R. 82-3-600.**

The Conservation Division's review of form CP-1, either in the central or district office, does not include an inquiry into well ownership or the filing operator's legal right to plug the well. This notice in no way constitutes authorization to plug the above well by persons not having legal rights of ownership or interest in the well.

This notice is void after October 29, 2008. The CP-1 filing does not bring the above well into compliance with K.A.R. 82-3-111 with regard to the Commission's temporary abandonment requirements.

Sincerely,



Steve Bond
Production Department Supervisor

District: #2
3450 N. Rock Road, Suite 601
Wichita, KS 67226
(316) 630-4000