

15-143-21904-00-00

STATE OF KANSAS
STATE CORPORATION COMMISSION

FORM CP-4

WELL PLUGGING RECORD

Give All Information Completely
Make Required Affidavit
Mail or Deliver Report to
Conservation Division
State Corporation Comm.
200 Colorado Derby Bldg.
202 W. 1st. St.
Wichita, KS 67202

Rooks County Sec. 24 Twp. 8 Rge. 18
Location as "NE/CNW/SW" or footage from lines

Lease Owner M.W.M.

Lease Name Collins Well No. #1

Office Address Box 315 Maize, Ks. 67101

Character of Well (Completed as Oil, Gas or Dry Hole)
Dry Hole

Date Well completed December 19 19 82

Application for plugging filed December 19 19 82

Application for plugging approved December 19 19 82

Plugging commenced 4:20 A.M. December 19 19 82

Plugging completed 8:00 A.M. December 19, 19 82

Reason for abandonment of well or producing formation
No Commercial Production

If a producing well is abandoned, date of last production
19

Was permission obtained from the Conservation Division or
its agents before plugging was commenced? Yes

Name of Conservation Agent who supervised plugging of this well Marion Schmidt

Producing formation Depth to top Bottom Tl. Depth of Well

Show depth and thickness of all water, oil and gas formations.

OIL, GAS OR WATER RECORDS

CASING RECORD

FORMATION	CONTENT	FROM	TO	SIZE	PUT IN	PULLED OUT
Surface Casing	60-40 pos	0'	204'	8 5/8"	204'	0'

Describe in detail the manner in which the well was plugged, indicating where the mud fluid was placed and the method or methods used in introducing it into the hold. If cement or other plugs were used, state the character of same and depth placed, from feet to feet for each plug set.

Plug #1 3420' with 20sxs

Plug #2 1320' with 20sxs

Plug #3 780' with 100 sxs

Plug #4 240' with 40sxs

Plug #5 40' with 10sxs

10 sxs in rathole

TOTAL----- 200 sxs 50-50 pos 6%gel 3%cc

P.D. @ 8:00 A.M. 12-19-82

(If additional description is necessary, use BACK of this sheet)

Name of Plugging Contractor Pioneer Drilling Co..
308 W. Mill Plainville, Kansas 67663

STATE OF COUNTY OF, ss.

(employee of owner) or (owner or operator) of the above described well, being first duly sworn on oath, says: That I have knowledge of the facts, statements, and matters herein contained and the log of the above described well is filed and that the same are true and correct. So help me God.

RECEIVED
STATE CORPORATION COMMISSION

MAR 22 1983
MAR 22 1983

(Signature)

(Address)

CONSERVATION DIVISION
Wichita, Kansas

SUBSCRIBED AND SWORN TO before me this day of 19

My commission expires

Notary Public



ERIC WADDELL COMPANY

Independent Petroleum Geologist

913-885-4497

Complete Geological Services

P. O. Box 349

Natoma, Kansas 67651

12-22-82

MWM
Collins # 1
1980' FNL & 990' FWL
NW/4 of Section 24-8S-18W
Rooks County, Kansas

Anhydrite: 1296-1332 (+669)

Pipe Record: 8 5/8", set at 204' with
130 sacks of 60/40 poz, 3% CC & 2% gel.

Commenced: 12-13-82
Completed: 12-19-82
Drilled By: Pioneer, Rig # 2

Production String: None, this well was
abandoned in the Conglomerate.

GEOLOGICAL REPORT

ELEVATION

1965:KB

1963:DF

1960:GL

Gentlemen;

The above captioned well was under my supervision from a rotary depth of 2800' to a rotary total depth of 3446'. Ten foot samples, washed and dried, were examined from 2850' to RTD. No drill stem tests or electric logs were run. This well was drilled and abandoned in the Conglomerate.

FORMATION DATA (From sample tops)

*All measurements are from KB.

TOPEKA LMS	2889	-924
HEEBNER SHALE	3099	-1134
TORONTO LMS	3128	-1163
LANSING-KANSAS CITY	3144	-1179
Base of KANSAS CITY	3368	-1403
RTD	3446	-1481

RECEIVED
STATE CORPORATION COMMISSION
MAR 22 1983
MAR 22 1983

CONSERVATION DIVISION
Wichita, Kansas



PIONEER DRILLING Co., INC.

308 WEST MILL
PLAINVILLE, KANSAS 67663
PHONE 913-434-4686

15-163-21904-00-00

ACCOUNT No. Rig #2

LEASE Collins

TO: M W M
Box 315
Maize, KS 67101

INVOICE No. B82-43

LEASE No. #1

PAGE No.

DATE December 19, 1982

Attention Buck Miller

FOR THE MONTH ENDED

TE	VOUCHER NUMBER	DESCRIPTION	CODE	DEBIT OR CREDIT	BALANCE
		For the drilling of the MWM #1 Collins located 1980' FNL 990' FWL NW/4 of Sec. 24-8S-18W in Rooks County, Kansas to a total depth of 3446' - 5' KB = 3441' at the rate of \$8.50 per foot		\$ 29,248.50	
		DAY WORK	HRS:MIN		
		Circ for samples @ 3301'	: 55		
		Circ for samples @ 3446'	1: 15		
			1: 70		
		Total Day Work 2 hrs. and 10 min. @ \$185/hr.		\$ 400.80	
		State Corporation Commission - intent		\$ 40.00	
		Laughlin Simmons - Stake and Elevation		\$ 130.00	
		Laughlin Simmons - Elevation Rerun		\$ 60.00	
					\$ 29,879.30

RECEIVED
STATE CORPORATION COMMISSION
MAR 22 1983
MAR 22 1983
CONSERVATION DIVISION
Wichita, Kansas

15-163-21904-00-00



LAUGHLIN-SIMMONS & CO. OF KANSAS, INC.

OIL FIELD SURVEYING
1337 NORTH MERIDIAN, SUITE 2 (316) 943-5351
WICHITA, KANSAS 67203

KW12088210

INVOICE NO.

MWM		1	Collins
OPERATOR		NO.	FARM
Rooks	24	8s	18w
COUNTY	S	T	R
			1980' FNL 990' FWL NW/4
			LOCATION

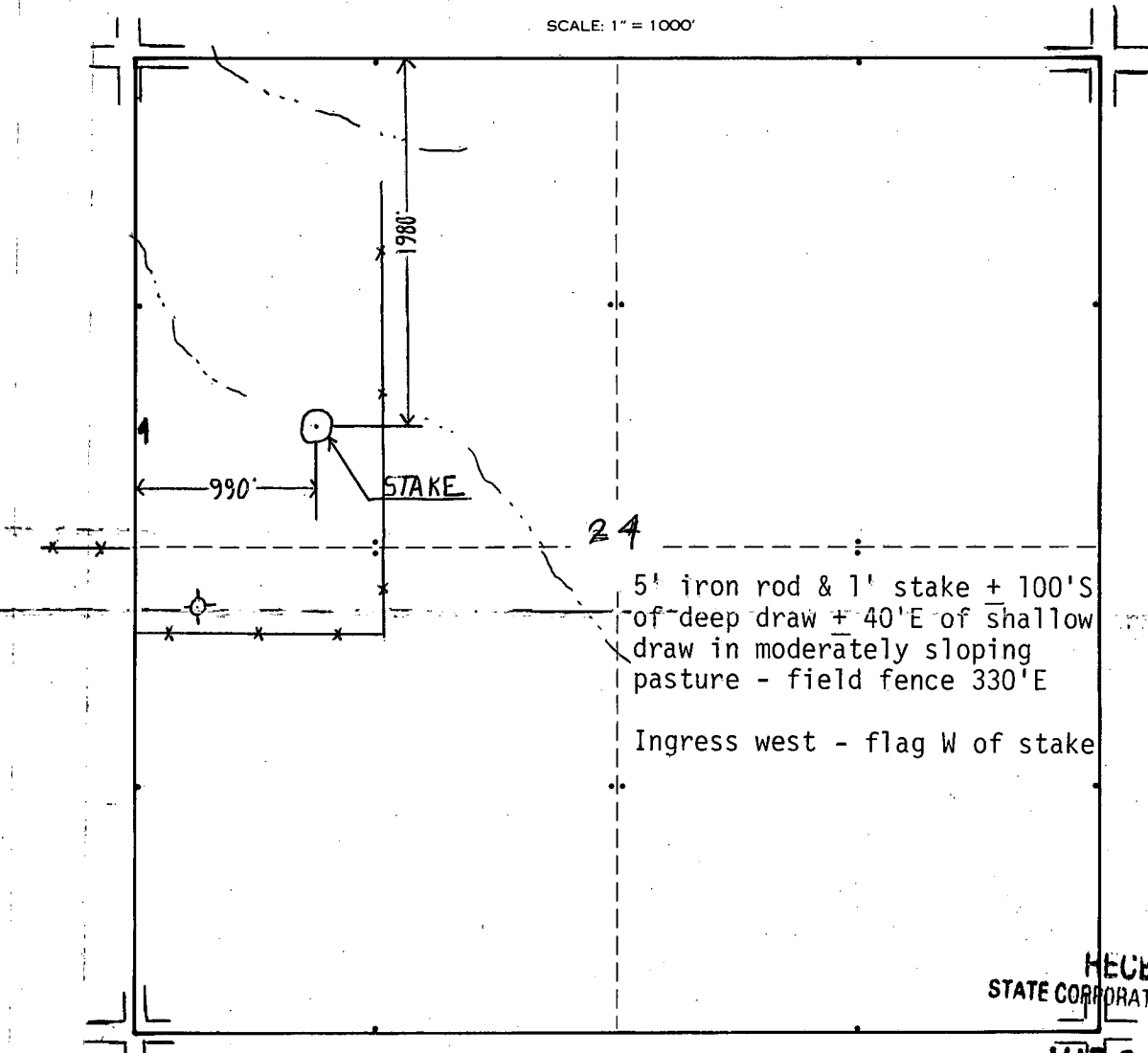
ELEVATION: 1960 gr 1963 DF



Liberty Enterprises Incorporated
308 West Mill
Plainville, Kansas 67665

AUTHORIZED BY: David Comeau PHONE #

SCALE: 1" = 1000'



RECEIVED
STATE CORPORATION COMMISSION

MAR 22 1983
MAR 22 1983
CONSERVATION DIVISION
Wichita, Kansas