

TYPE OR PRINT

NOTICE OF INTENTION TO DRILL

C-1

15-163-20,295-00-00

TO BE FILED WITH THE STATE CORPORATION COMMISSION PRIOR TO COMMENCEMENT OF WELL

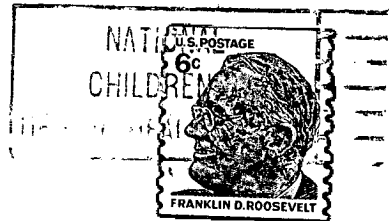
- 1. Operator Black Petroleum, Inc. Address 200 W. Douglas, Wichita, Kansas 67202
- 2. Lease name Pywell Well No. 1 County Rooks
- 3. Well Location SE SE SW Sec. 26 Township 9 S Range 19 W
- 4. Well to be drilled 330 ft. from nearest lease line.
- 5. Drilling Contractor Dunne-Gardner Petr., Inc. Address 200 W. Douglas, Wichita, Kansas
- 6. Type of equipment: Rotary Cable Tool Approx. date operation to begin February 12 1970
- 7. Well to be drilled for Oil Gas Disposal Input Estimated Total Depth of Well 3625 ft.
- 8. Depth of deepest fresh water well within one mile of location NONE ft. If none exists, write NONE
- 9. Ground elevation at location is approx. _____ ft. higher or _____ ft. lower than ground elevation at water well.
- 10. Depth of the deepest municipal water well within three miles of location _____ ft. If none exists, write NONE
NONE
- 11. Operator states that he will set surface pipe at least 25 ft. below all Tertiary or unconsolidated deposits and, taking into consideration differences in ground elevations, that the minimum depth necessary, to the best of his knowledge and belief, to protect all fresh water zones is 175 ft. and operator agrees to set surface pipe at this location to a depth of not less than 210 ft. Alternate 1 Alternate 2 .

REMARKS:

BLACK PETROLEUM, INC.

Signature of Operator Thomas E. Black, Pres





**State Corporation Commission of Kansas
Conservation Division
500 Insurance Building
212 North Market
Wichita, Kansas 67202**

RECEIVED
STATE CORPORATION COMMISSION
2/13/70
FEB 13 1970
CONSERVATION DIVISION
Wichita, Kansas

(IF PREFERRED, MAIL IN ENVELOPE)