

TYPE OR PRINT:

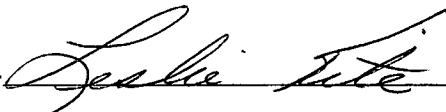
NOTICE OF INTENTION TO DRILL

TO BE FILED WITH THE STATE CORPORATION COMMISSION PRIOR TO COMMENCEMENT OF WELL

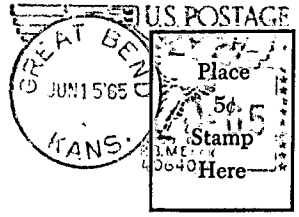
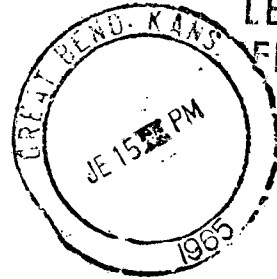
1. Operator Leben Drilling, Inc. Address Box 486, Great Bend, Kansas
2. Lease name Shutts Well No. 1 County Graham
3. Well Location C SW NW Sec. 30 Township 9S Range 22W
4. Well to be drilled 660 ft. from nearest lease line.
5. Drilling Contractor Leben Drilling, Inc. Address Box 486, Great Bend, Kansas
6. Type of equipment: Rotary Cable Tool Approx. date operation to begin 6-17- 1965.
7. Well to be drilled for Oil Gas Disposal Input Estimated Total Depth of Well 3950 ft.
8. Depth of deepest fresh water well within one mile of location ---- ft. If none exists, write NONE none.
9. Ground elevation at location is approx. ---- ft. higher or --- ft. lower than ground elevation at water well.
10. Depth of the deepest municipal water well within three miles of location --- ft. If none exists, write NONE none.
11. Operator states that he will set surface pipe at least 25 ft. below all Tertiary or unconsolidated deposits and, taking into consideration differences in ground elevations, that the minimum depth necessary, to the best of his knowledge and belief, to protect all fresh water zones is 150 ft. and operator agrees to set surface pipe at this location to a depth of not less than 200 ft. Alternate 1 Alternate 2 **LEBEN DRILLING, INC.**

REMARKS:

Signature of Operator



CALL
LEBEN
FIRST



State Corporation Commission of Kansas
Conservation Division
500 Insurance Building
212 North Market
Wichita, Kansas 67202

RECEIVED
STATE CORPORATION COMMISSION
6/16/65
JUN 16 1965

CONSERVATION DIVISION
Wichita, Kansas

(IF PREFERRED, MAIL IN ENVELOPE)