

TYPE

NOTICE OF INTENTION TO DRILL

C-1

TO BE FILED WITH THE STATE CORPORATION COMMISSION
PRIOR TO COMMENCEMENT OF WELL

API Number 15-003-20,608-
(For office use only) 00-00

1. Operator James E. Russell Petroleum, Inc.

Starting Date 8-22-77

Address Route No. 1 Colony, Kansas 66015

County Anderson

2. Contractor M&M Drilling Co., Inc.

Sec 3 Twp 23 S Rge 19 E
S 1/2

Address Mound City, Kansas 66056

Spot Location 880' SNL 1760' EWL - SW 1/4

3. Type of Equipment: Rotary Cable Tool _____

Nearest Lease Line 440' ft.

4. Well to be Drilled for: Oil Gas _____

Lease Name W.L. Minckley

Disposal _____ Input _____ Other _____

5. Depth of Deepest Fresh Water within 1 mile None ft.

Well No. R-23

6. Depth of Municipal Water Well within 3 miles None ft.

7. Depth to Protect all Fresh Water 100' ft.

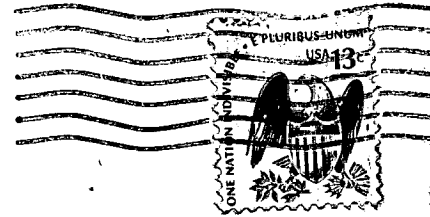
Est. Total Depth 875' ft.

8. Amount of Surface Casing to be set 75' ft.

9. Alternate No. 1 _____ No. 2

REMARKS: 5/8" Hole and 2" casing OPERATOR STATES THAT HE WILL COMPLY WITH K. S. A. 55-128
With ample cement to circulate
from bottom to top.

Signature of Operator by Carl B. Edington
James E. Russell Petroleum, Inc.



State Corporation Commission of Kansas
Conservation Division
245 North Water
Wichita, Kansas 67202

RECEIVED
 STATE CORPORATION COMMISSION

AUG 18 1977

CONSERVATION DIVISION
 Wichita, Kansas

08-18-77

(IF PREFERRED, MAIL IN ENVELOPE)