

TYPE --

# NOTICE OF INTENTION TO DRILL

C-1

TO BE FILED WITH THE STATE CORPORATION COMMISSION  
PRIOR TO COMMENCEMENT OF WELL

API Number 15-003-20419-  
(For office use only) 00-00

1. Operator Richard Engineering Co. & H & B 74, Ltd.

Starting Date Aug. 8, 1975

Address 1315 S. Steuben, Chanute, Kans. 66720

County Anderson

2. Contractor Carter Land & Cattle Co., Inc.

Sec 4 Twp 22 S Rge 21 E W

Address Same

Spot Location 1395' FWL, 785' FSL

3. Type of Equipment: Rotary  Cable Tool \_\_\_\_\_

Nearest Lease Line 785' ft.

4. Well to be Drilled for: Oil  Gas \_\_\_\_\_

Lease Name Gaddis

Disposal \_\_\_\_\_ Input \_\_\_\_\_ Other \_\_\_\_\_

5. Depth of Deepest Fresh Water within 1 mile none ft.

Well No. 26

6. Depth of Municipal Water Well within 3 miles " ft.

7. Depth to Protect all Fresh Water 20' ft.

Est. Total Depth 800' ft.

8. Amount of Surface Casing to be set 22' ft.

9. Alternate No. 1 \_\_\_\_\_ No. 2

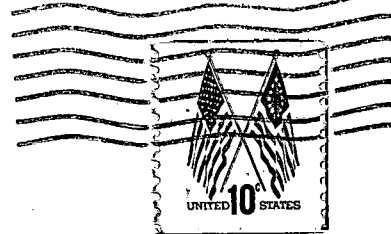
REMARKS:

OPERATOR STATES THAT HE WILL COMPLY WITH K. S. A. 55-128

Signature of Operator

*John R. Richard*





**State Corporation Commission of Kansas**  
**Conservation Division**  
**P. O. Box 17027**  
**Wichita, Kansas 67217**

**RECEIVED**  
**STATE CORPORATION COMMISSION**

**JUL 31 1975**

**CONSERVATION DIVISION**  
**Wichita, Kansas**

**7-31-75**

**(IF PREFERRED, MAIL IN ENVELOPE)**