

CONFIDENTIAL

ORIGINAL

KANSAS CORPORATION COMMISSION
OIL & GAS CONSERVATION DIVISION

Form ACO-1

September 1999

WELL COMPLETION FORM
WELL HISTORY - DESCRIPTION OF WELL & LEASE

Form Must Be Typed

Operator: License # 5447
Name: OXY USA Inc.
Address: P.O. Box 2528
City/State/Zip: Liberal, KS 67905
Purchaser: NCRA
Operator Contact Person: Rafael Bacigalupo
Phone: (620) 629-4229
Contractor: Name: Murfin Drilling Company
License: 30606
Wellsite Geologist: _____

Designate Type of Completion:
 New Well Re-Entry Workover
 Oil SWD SIOW Temp. Abd.
 Gas ENHR SIGW
 Dry WSW Other (Core, WSW, Expl, Cathodic, etc)

If Workover/Re-entry: Old Well Info as follows:
Operator: _____
Well Name: _____

Original Comp. Date: _____ Original Total Depth: _____
 Deepening Re-perf. Conv. To Enhr./SWD
 Plug Back Plug Back Total Depth
 Commingled Docket No. _____
 Dual Completion Docket No. _____
 Other (SWD or Enhr.?) Docket No. _____
12/12/2006 12/21/2006 01/12/2007
Spud Date or Date Reached TD Completion Date or
Recompletion Date Recompletion Date

API No. 15 - 081-21696-0000
County: Haskell
 - NW - NW - SW Sec 31 Twp. 27 S. R. 33W
2425 feet from (S) N (circle one) Line of Section
330 feet from E (W) (circle one) Line of Section

Footages Calculated from Nearest Outside Section Corner:
(circle one) NE SE NW (SW)
Lease Name: Branstetter Chester Unit Well #: 304S
Field Name: Branstetter Chester Unit
Producing Formation: L Morrow/Chester
Elevation: Ground: 3013 Kelly Bushing: 3025
Total Depth: 6148 Plug Back Total Depth: 6116
Amount of Surface Pipe Set and Cemented at 1762 feet
Multiple Stage Cementing Collar Used? Yes No
If yes, show depth set 3544
If Alternate II completion, cement circulated from _____
feet depth to _____ w/ _____ sx cmt.

Drilling Fluid Management Plan ALT I WITH
(Data must be collected from the Reserve Pit) 8-27-07
Chloride content 1000 ppm Fluid volume 1600 bbls
Dewatering method used Evaporation
Location of fluid disposal if hauled offsite: _____
Operator Name: _____
Lease Name: _____ License No.: _____
Quarter _____ Sec. _____ Twp. _____ S. R. _____ East West
County: _____ Docket No.: _____

INSTRUCTIONS: An original and two copies of this form shall be filed with the Kansas Corporation Commission, 130 S. Market - Room 2078, Wichita, Kansas 6702, within 120 days of the spud date, recompletion, workover or conversion of a well. Rule 82-3-130, 82-3-106 and 82-3-107 apply. Information of side two of this form will be held confidential for a period of 12 months if requested in writing and submitted with the form (see rule 82-3-107 for confidentiality in excess of 12 months). One copy of all wireline logs and geologist well report shall be attached with this form. ALL CEMENTING TICKETS MUST BE ATTACHED. Submit CP-4 form with all plugged wells. Submit CP-111 form with all temporarily abandoned wells.

All requirements of the statutes, rules and regulations promulgated to regulate the oil and gas industry have been fully complied with and the statements herein are complete and correct to the best of my knowledge.

Signature: _____
Title: Capital Project Date April 18, 2007
Subscribed and sworn o before me this 18th day of April
20 07
Notary Public: Anita Peterson
Date Commission Expires: Oct. 1, 2009

KCC Office Use Only
 Letter of Confidentiality Attached
If Denied, Yes Date: 4-20-07
 Wireline Log Received
 Geologist Report Received
 UIC Distribution

ANITA PETERSON
Notary Public - State of Kansas
My Appt. Expires October 1, 2009

RECEIVED
APR 19 2007

KCC WICHITA

ORIGINAL

CONFIDENTIAL

Side Two

Operator Name: OXY USA Inc. Lease Name: Branstetter Chester Unit Well #: 304S

Sec. 31 Twp. 27 S. R. 33W East West County: Haskell

Instructions: Show important tops and base of formations penetrated. Detail all cores. Report all final copies of drill stems tests giving interval tested, time tool open and closed, flowing and shut-in pressures, whether shut-in pressure reached static level, hydrostatic pressures, bottom hole temperature, fluid recovery, and flow rates if gas to surface test, along with final chart(s). Attach extra sheet if more space is needed. Attach copy of all Electric Wireline Logs surveyed. Attach final geological well site report.

Drill Stem Tests Taken [X] Yes [] No
Samples Sent to Geological Survey [X] Yes [] No
Cores Taken [] Yes [X] No
Electric Log Run [X] Yes [] No
List All E. Logs Run: Thermal Multigate Decay Lithology, Pseudo Triple Combo Log from TMD-L, Cement Bond Log
[X] Log Formation (Top), Depth and Datum [] Sample
Name Top Datum
Marmaton 4730 -1705
Cherokee 4880 -1855
Morrow 5180 -2155
Chester 5290 -2265
St Genevieve 5395 -2370
St Louis 5420 -2395

CASING RECORD [X] New [] Used
Report all strings set-conductor, surface, intermediate, production, etc.
Table with columns: Purpose of String, Size Hole Drilled, Size Casing Set(in. O.D.), Weight Lbs./ft., Setting Depth, Type of Cement, # Sacks Used, Type and Percent Additives

ADDITIONAL CEMENTING / SQUEEZE RECORD

Table with columns: Purpose, Depth Top Bottom, Type of Cement, #Sacks Used, Type and Percent Additives

PERFORATION RECORD - Bridge Plugs Set/type
Specify Footage of Each Interval Perforated
Table with columns: Shots Per Foot, PERFORATION RECORD, Acid, Fracture, Shot, Cement Squeeze Record, Depth

TUBING RECORD
Size 2 3/8 Set At 5416 Packer At
Liner Run [] Yes [X] No

Date of First, Resumed Production, SWD or Enhr. WSW
Producing Method [] Flowing [X] Pumping [] Gas Lift [] Other (Explain)

Estimated Production Per 24 Hours
Oil BBLs Gas Mcf Water Bbls Gas-Oil Ratio Gravity

Disposition of Gas METHOD OF COMPLETION Production Interval
[] Vented [] Sold [] Used on Lease [] Open Hole [X] Perf. [] Dually Comp. [] Commingled
[] Other (Specify)

The Road to Excellence Starts with Safety

Sold To #: 348005	Ship To #: 2537808	Quote #:	Sales Order #: 4824065
Customer: OXY HUGOTON EBUSINESS		Customer Rep: BEVANS, RON	
Well Name: Branstetter Chester Unit	Well #: # 304-S	API/UWI #: 15-081-21696	
Field:	City (SAP): UNKNOWN	County/Parish: Haskell	State: Kansas
Legal Description: Section 31 Township 27S Range 33W			
Lat: N 0 deg. OR N 0 deg. 0 min. 0 secs.		Long: E 0 deg. OR E 0 deg. 0 min. 0 secs.	
Contractor: Murfin Drilling Co.		Rig/Platform Name/Num: 22	
Job Purpose: Cement Multiple Stages			Ticket Amount:
Well Type: Development Well		Job Type: Cement Multiple Stages	
Sales Person: HESTON, MYRON		Srvc Supervisor: COBLE, RANDALL	MBU ID Emp #: 347700

Activity Description	Date/Time	Cht #	Rate bbl/min	Volume bbl		Pressure psig		Comments
				Stage	Total	Tubing	Casing	
Call Out	12/22/2006 03:30							
Depart Yard Safety Meeting	12/22/2006 05:30							
Arrive At Loc	12/22/2006 06:30							RUNNING CASING UPON ARRIVAL- FLOAT EQUIP. AND DV TOOL ALREADY IN HOLE
Assessment Of Location Safety Meeting	12/22/2006 06:45							LOCATION MUDDY
Pre-Rig Up Safety Meeting	12/22/2006 07:00							
Rig-Up Equipment	12/22/2006 07:15							
Start Job	12/22/2006 11:00							FIRST STAGE
Test Lines	12/22/2006 11:21							4000 PSI
Pump Spacer 1	12/22/2006 11:22		6	10			250.0	FREAH WATER
Pump Cement	12/22/2006 11:26		6	84			300.0	185 SKS @ 11.8 # MIDCON 2 PP
Clean Lines	12/22/2006 11:42				94			CLEANED LINES TO PIT
Drop Plug	12/22/2006 11:43							
Pump Displacement	12/22/2006 11:45		6	132			100.0	60 BBL H2O, 88 BBL MUD- OVERDISPLACED 6 BBL DUE TO MUD AERATION-PSI CAME UP TO 800 PSI
Other	12/22/2006 12:08		2	10			800.0	SLOWED RATE, PSI CAME DOWN TO 500 PSI

Sold To #: 348005

Ship To #: 2537808

Quote #:

Sales Order #:

4824065

SUMMIT Version: 7.10.386

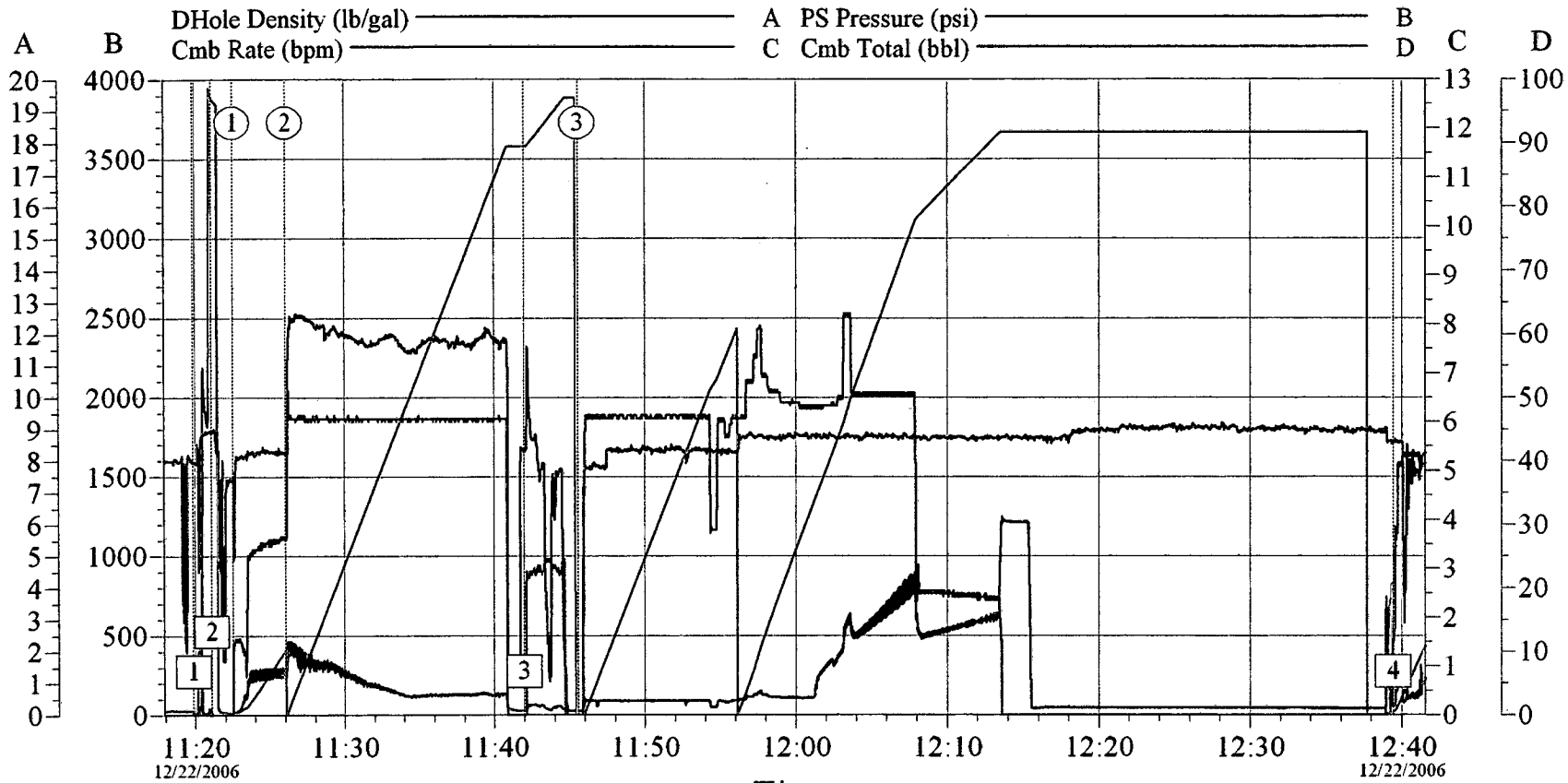
Fridav. December 22. 2006 05:55:00

RECEIVED

APR 19 2007

KCC WICHITA

Activity Description	Date/Time	Cht #	Rate bbl/min	Volume bbl		Pressure psig		Comments
				Stage	Total	Tubing	Casing	
Bump Plug	12/22/2006 12:13		2		142		650.0	BUMPED PLUG UP TO 1250 PSI
Check Floats	12/22/2006 12:15							FLOATES HELD
Open MSC	12/22/2006 12:39						800.0	
Comment	12/22/2006 12:39							CIRC FOR 4 HOURS WITH RIG
Start Job	12/22/2006 16:00							
Other	12/22/2006 16:10		2					25 SKS 50/50 POZ @ 14.2 # FOR MOUSE AND RAT HOLE
Pump Spacer 1	12/22/2006 16:27		6	10			200.0	FRESH WATER
Pump Lead Cement	12/22/2006 16:30		5	55			100.0	120 SKS MIDCON2 PP @11.8 #
Pump Tail Cement	12/22/2006 16:40		4.5	11	76		100.0	50 SKD 50/50 POZ @ 14.2 #
Drop Plug	12/22/2006 16:43							
Pump Displacement	12/22/2006 16:44		5.5	72			100.0	FRESH WATER
Displ Reached Cmnt	12/22/2006 16:56		5				250.0	
Other	12/22/2006 17:00		2	10				SLOWED RATE FOR LAST 10
Bump Plug	12/22/2006 17:04		2		82		500.0	BUMPED PLUG TO 2200 PSI
Check Floats	12/22/2006 17:06							FLOATES HELD
Pre-Rig Down Safety Meeting	12/22/2006 17:15							
Rig-Down Equipment	12/22/2006 17:20							
Depart Location for Service Center or Other Site	12/22/2006 18:30							



Stages		
①	Pump Spacer 1	11:22:32
②	Pump Lead Cement	11:26:02
③	Pump Displacement	11:45:32

Event Log		
1	Start Job	11:19:53
2	Test Lines	11:21:06
3	Clean Lines	11:42:00
4	End Job	12:39:26

Customer: OXY
 Well Description: BRANSTETTER CHESTER UNIT

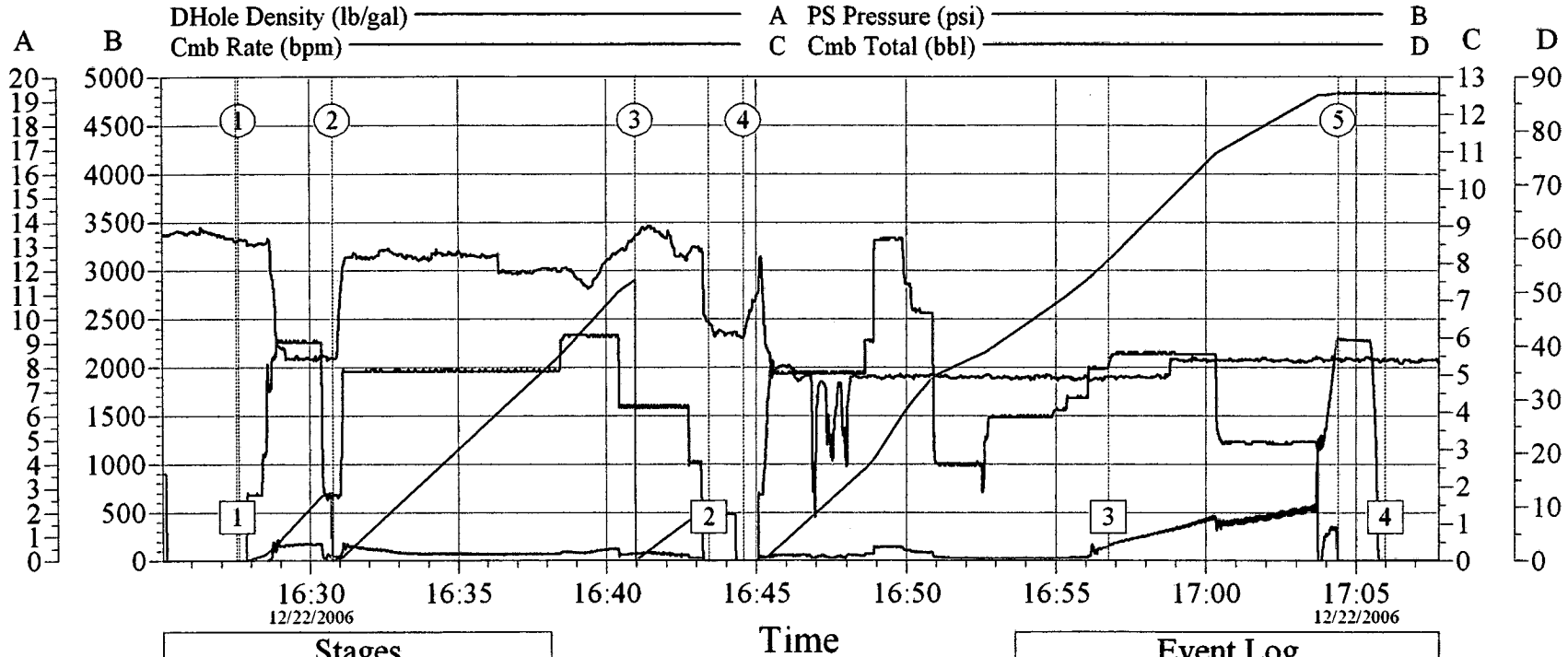
Job Date: 12-22-06
 UWI:304-S FIRST STAGE

Ticket #: 4824065
 5 1/2" DV PRODUCTION CASING

HALLIBURTON
 CemWin v1.4.0
 22-Dec-06 13:22

OXY HUGOTON EBUSINESS

5 1/2 DV LONG STRING STAGE 2



Stages		
①	Pump Spacer 1	16:27:37
②	Pump Lead Cement	16:30:47
③	Pump Tail Cement	16:40:58
④	Pump Displacement	16:44:35
⑤	Bump Plug	17:04:24

Event Log		
1	Start Job	16:27:32
2	Drop Top Plug	16:43:25
3	Displ Reached Cement	16:56:46
4	End Job	17:05:59

Customer: OXY	Job Date: 12-22-06	Ticket #: 4824065
---------------	--------------------	-------------------

HALLIBURTON
CemWin v1.4.0
22-Dec-06 17:36



Cementing Service Report

Customer OXY RESOURCE CALIFORNIA LLC						Job Number 2205552342									
Well Branstetter Chester Unit # 304S			Location (legal)			Schlumberger Location Perryton, TX			Job Start 2006-Dec-14						
Field		Formation Name/Type		Deviation		Bit Size 12.3 in	Well MD 2,015 ft	Well TVD 2,015 ft							
County Haskell		State/Province Kansas		BHP psi	BHST 98 °F	BHCT °F	Pore Press. Gradient psi/ft								
Well Master: 0630876561		API / UWI:		Casing/Liner											
Rig Name MURFIN 20		Drilled For Oil & Gas		Service Via Land		Depth, ft 2015.63	Size, in 8.63	Weight, lb/ft 24	Grade	Thread 8RD					
Offshore Zone		Well Class New		Well Type Exploration		Tubing/Drill Pipe									
Drilling Fluid Type		Max. Density lb/gal		Plastic Vi: cp		Depth,	Size, in	Weight, lb/ft	Grade	Thread					
Service Line Cementing		Job Type Cem Surface Casing		Perforations/Open Hole											
Max. Allowed Tubing Pressure 1500 psi		Max. Allowed Ann. Pressure psi		WellHead Connection 8 5/8" H&SM		Top, ft	Bottom, ft	spf	No. of Shots	Total Interval ft					
Service Instructions CEMENT 8 5/8" SURFACE CASING WITH: 10 BBL FRESH WATER 585 SK 35:65 POZ C + 6% D020 + 2% S001 + 0.25 pps D130 195 SK CLASS C + 2% S001 + 0.125 pps D130 DISPLACE WITH FRESH WATER						Diameter in	Treat Down Casing	Displacement 125.54 bbl	Packer Type	Packer Depth ft					
						Tubing Vol. bbl	Casing Vol. 128.37 bbl	Annular Vol. 148.12 bbl	OpenHole Vol 293.56 bbl						
						Casing/Tubing Secured <input checked="" type="checkbox"/>		1 Hole Volume Circulated prior to Cementing <input type="checkbox"/>		Casing Tools		Squeeze Job			
						Lift Pressure: 550 psi		Pipe Rotated <input type="checkbox"/>		Pipe Reciprocated <input type="checkbox"/>		Shoe Type:		Squeeze Type	
No. Centralizers:		Top Plugs: 1		Bottom Plugs:		Shoe Depth: ft		Tool Type:							
Cement Head Type: Single		Job Scheduled For:		Arrived on Location: 2006-Dec-14 2:00		Leave Location: 2006-Dec-14		Stage Tool Type		Tool Depth: ft					
						Stage Tool Depth: ft		Tail Pipe Size: in							
						Collar Type:		Tail Pipe Depth: ft							
						Collar Depth: ft		Sqz Total Vol: bbl							
Date	Time	Treating Pressure 24 hr clock psi	Density lb/gal	CMT RATE bbl/min	CMT VOL bbl	NRD RATE bbl/min	NRD VOLUME TOTAL bbl	0	0	Message					
2006-Dec-14	3:25	0	8.32	0.0	0.0	0.0	0.0	0	0						
2006-Dec-14	3:25									Start Job					
2006-Dec-14	3:25	0	8.32	0.0	0.0	0.0	0.0	0	0						
2006-Dec-14	3:25									Start Pumping Spacer					
2006-Dec-14	3:25	0	8.32	0.0	0.0	0.0	0.0	0	0						
2006-Dec-14	3:25									Pressure Test Lines					
2006-Dec-14	3:25	5	8.32	0.0	0.0	0.0	0.0	0	0						
2006-Dec-14	3:26	5	8.32	0.0	0.0	0.0	0.0	0	0						
2006-Dec-14	3:26	5	8.32	0.0	0.0	0.0	0.0	0	0						
2006-Dec-14	3:27	9	8.31	0.0	0.0	0.9	0.0	0	0						
2006-Dec-14	3:27	87	8.32	0.5	0.1	0.5	0.4	0	0						
2006-Dec-14	3:28	110	8.32	1.2	0.6	1.2	0.9	0	0						
2006-Dec-14	3:28	110	8.32	1.2	1.2	1.3	1.5	0	0						
2006-Dec-14	3:29	69	8.30	0.0	1.5	0.0	2.1	0	0						
2006-Dec-14	3:29	64	8.31	0.0	1.5	0.0	2.1	0	0						
2006-Dec-14	3:30	1611	8.31	0.0	1.5	0.0	2.3	0	0						
2006-Dec-14	3:30	50	8.31	0.0	1.5	0.0	2.3	0	0						
2006-Dec-14	3:31	151	8.30	1.5	1.9	1.6	2.6	0	0						
2006-Dec-14	3:31	343	8.28	6.2	4.8	6.2	5.4	0	0						
2006-Dec-14	3:32	298	8.28	5.7	7.8	5.7	8.5	0	0						
2006-Dec-14	3:32									End Spacer					
2006-Dec-14	3:32	325	8.30	6.3	10.2	6.3	10.9	0	0						

RECEIVED
Page 1 of 5
APR 19 2007

Well		Field			Service Date		Customer		Job Number
Branstetter Chester Unit ## 304S					06348-Dec-14		OXY RESOURCE CALIFORNIA LLC		2205552342
Date	Time	Treating Pressure	Density	CMT RATE	CMT VOL	NRD RATE	NRD VOLUME TOTAL	0	Message
	24 hr clock	psi	lb/gal	bbl/min	bbl	bbl/min	bbl	0	
2006-Dec-14	3:32								Start Mixing Lead Slurry
2006-Dec-14	3:32	325	8.29	6.3	10.5	6.3	11.1	0	
2006-Dec-14	3:32								Reset Total, Vol = 10.66 bbl
2006-Dec-14	3:32	330	8.31	6.3	10.7	6.3	11.3	0	
2006-Dec-14	3:32	334	8.39	6.3	0.2	6.3	0.2	0	
2006-Dec-14	3:33	325	9.81	6.3	3.3	5.9	3.3	0	
2006-Dec-14	3:33	279	10.28	6.3	6.5	6.8	6.4	0	
2006-Dec-14	3:34	288	11.08	6.3	9.6	5.7	9.3	0	
2006-Dec-14	3:34	298	11.49	6.3	12.8	6.0	12.3	0	
2006-Dec-14	3:35	348	12.32	6.3	15.9	6.0	15.2	0	
2006-Dec-14	3:35	343	11.93	6.4	19.1	6.2	18.3	0	
2006-Dec-14	3:36	311	11.95	6.4	22.3	6.2	21.4	0	
2006-Dec-14	3:36	330	11.67	5.9	25.3	5.9	24.3	0	
2006-Dec-14	3:37	320	12.75	6.3	28.1	6.0	27.2	0	
2006-Dec-14	3:37	348	12.59	6.3	31.3	6.0	30.2	0	
2006-Dec-14	3:38	316	12.10	6.5	34.5	6.3	33.3	0	
2006-Dec-14	3:38	302	12.09	6.5	37.7	6.3	36.4	0	
2006-Dec-14	3:39	270	12.03	6.5	40.9	6.2	39.5	0	
2006-Dec-14	3:39	261	12.16	6.5	44.1	6.3	42.6	0	
2006-Dec-14	3:40	261	12.14	6.5	47.4	6.4	45.8	0	
2006-Dec-14	3:40	224	12.14	6.4	50.6	6.3	48.9	0	
2006-Dec-14	3:41	229	12.17	6.3	53.8	6.2	52.1	0	
2006-Dec-14	3:41	238	12.18	6.2	57.0	6.0	55.1	0	
2006-Dec-14	3:42	233	12.21	6.1	60.0	5.9	58.1	0	
2006-Dec-14	3:42	224	12.22	6.1	63.1	5.9	61.0	0	
2006-Dec-14	3:43	224	12.20	6.1	66.1	5.9	64.0	0	
2006-Dec-14	3:43	188	12.19	6.1	69.1	5.9	66.9	0	
2006-Dec-14	3:44	220	12.14	6.1	72.2	5.9	69.9	0	
2006-Dec-14	3:44	215	12.17	6.1	75.2	5.8	72.9	0	
2006-Dec-14	3:45	179	11.92	5.5	78.2	5.4	75.7	0	
2006-Dec-14	3:45	169	11.69	5.7	81.1	5.6	78.6	0	
2006-Dec-14	3:46	206	11.92	6.1	84.0	5.9	81.4	0	
2006-Dec-14	3:46	215	11.92	6.3	87.1	6.0	84.4	0	
2006-Dec-14	3:47	229	11.97	6.4	90.3	6.0	87.4	0	
2006-Dec-14	3:47	247	11.99	6.4	93.5	6.2	90.4	0	
2006-Dec-14	3:48	211	11.95	6.3	96.7	6.1	93.5	0	
2006-Dec-14	3:48	229	12.21	6.4	99.8	6.1	96.4	0	
2006-Dec-14	3:49	211	12.17	6.4	103.0	6.1	99.5	0	
2006-Dec-14	3:49	211	12.05	6.4	106.2	6.0	102.5	0	
2006-Dec-14	3:50	220	12.04	6.4	109.4	6.1	105.6	0	
2006-Dec-14	3:50	188	12.01	6.3	112.6	6.1	108.6	0	
2006-Dec-14	3:51	201	11.98	6.2	115.7	5.9	111.6	0	
2006-Dec-14	3:51	201	12.00	6.2	118.8	5.9	114.5	0	
2006-Dec-14	3:52	201	12.05	6.0	121.9	5.8	117.5	0	
2006-Dec-14	3:52	192	12.15	5.9	124.8	5.6	120.3	0	
2006-Dec-14	3:53	197	12.10	6.1	127.7	5.9	123.1	0	
2006-Dec-14	3:53	206	12.05	6.3	130.8	6.0	126.1	0	
2006-Dec-14	3:54	206	12.11	6.0	133.9	5.6	129.0	0	
2006-Dec-14	3:54	183	12.17	5.5	136.8	5.2	131.7	0	
2006-Dec-14	3:55	179	12.18	5.5	139.5	5.3	134.4	0	
2006-Dec-14	3:55	179	12.14	5.5	142.3	5.3	137.0	0	
2006-Dec-14	3:56	192	12.12	5.9	145.1	5.7	139.7	0	
2006-Dec-14	3:56	188	12.19	5.9	148.0	5.6	142.5	0	
2006-Dec-14	3:57	192	12.20	5.9	151.0	5.6	145.3	0	

Well		Field			Service Date		Customer		Job Number
Branstetter Chester Unit ## 304S					06348-Dec-14		OXY RESOURCE CALIFORNIA LLC		2205552342
Date	Time	Treating Pressure	Density	CMT RATE	CMT VOL	NRD RATE	NRD VOLUME TOTAL	0	Message
	24 hr clock	psi	lb/gal	bbl/min	bbl	bbl/min	bbl	0	
2006-Dec-14	3:57	179	12.20	5.9	153.9	5.5	148.1	0	
2006-Dec-14	3:58	160	11.61	5.5	156.8	5.3	150.8	0	
2006-Dec-14	3:58	211	12.15	6.4	159.5	6.1	153.4	0	
2006-Dec-14	3:59	179	12.18	5.6	162.6	5.3	156.3	0	
2006-Dec-14	3:59	174	12.16	5.5	165.3	5.4	159.0	0	
2006-Dec-14	4:00	183	12.14	6.2	168.2	5.2	161.7	0	
2006-Dec-14	4:00	206	12.11	6.2	171.4	6.0	164.6	0	
2006-Dec-14	4:01	188	12.03	6.2	174.5	6.0	167.6	0	
2006-Dec-14	4:01	183	12.30	5.6	177.3	5.4	170.4	0	
2006-Dec-14	4:02	206	12.40	6.4	180.5	6.1	173.3	0	
2006-Dec-14	4:02	243	12.30	6.4	183.6	6.0	176.4	0	
2006-Dec-14	4:03	220	12.16	6.4	186.8	6.2	179.4	0	
2006-Dec-14	4:03	192	12.11	6.4	190.0	6.2	182.5	0	
2006-Dec-14	4:04	206	12.24	6.4	193.2	6.1	185.6	0	
2006-Dec-14	4:04	215	12.29	6.4	196.4	6.1	188.7	0	
2006-Dec-14	4:05	224	12.27	6.3	199.6	6.2	191.7	0	
2006-Dec-14	4:05	229	12.21	6.4	202.8	6.1	194.8	0	
2006-Dec-14	4:06	110	12.15	6.4	205.9	6.2	197.9	0	
2006-Dec-14	4:06	197	12.11	6.4	209.1	6.2	201.0	0	
2006-Dec-14	4:07	201	12.08	6.4	212.3	6.2	204.1	0	
2006-Dec-14	4:07	192	12.12	6.4	215.5	6.1	207.2	0	
2006-Dec-14	4:08	206	12.11	6.4	218.7	6.2	210.3	0	
2006-Dec-14	4:08	188	12.14	6.2	221.9	6.1	213.4	0	
2006-Dec-14	4:09	192	12.21	6.2	225.0	6.1	216.4	0	
2006-Dec-14	4:09	188	11.89	6.2	228.1	6.0	219.4	0	
2006-Dec-14	4:10	165	11.50	5.7	231.1	5.6	222.3	0	
2006-Dec-14	4:10								Reset Total, Vol = 231.51 bbl
2006-Dec-14	4:10	142	11.66	5.6	231.5	5.7	222.7	0	
2006-Dec-14	4:10								End Lead Slurry
2006-Dec-14	4:10	156	11.92	5.6	0.3	5.5	0.3	0	
2006-Dec-14	4:10								Start Mixing Tail Slurry
2006-Dec-14	4:10	151	11.99	5.7	0.4	5.5	0.4	0	
2006-Dec-14	4:10	179	13.40	6.0	2.6	5.8	2.5	0	
2006-Dec-14	4:11	279	14.27	6.3	5.6	6.1	5.5	0	
2006-Dec-14	4:11	275	14.58	5.8	8.6	5.8	8.4	0	
2006-Dec-14	4:12	256	14.80	5.6	11.5	5.6	11.3	0	
2006-Dec-14	4:12	256	14.65	5.6	14.3	5.6	14.0	0	
2006-Dec-14	4:13	284	14.65	5.9	17.1	5.9	16.8	0	
2006-Dec-14	4:13	293	14.63	6.0	20.1	6.0	19.8	0	
2006-Dec-14	4:14	298	15.03	6.0	23.1	6.0	22.8	0	
2006-Dec-14	4:14	307	14.80	6.0	26.1	6.0	25.8	0	
2006-Dec-14	4:15	302	14.87	6.0	29.1	6.0	28.8	0	
2006-Dec-14	4:15	311	15.13	6.0	32.1	5.9	31.7	0	
2006-Dec-14	4:16	320	15.05	6.2	35.1	6.1	34.8	0	
2006-Dec-14	4:16	316	14.85	6.2	38.2	6.1	37.8	0	
2006-Dec-14	4:17	334	14.91	6.2	41.3	6.2	40.9	0	
2006-Dec-14	4:17	311	14.87	6.2	44.4	6.2	43.9	0	
2006-Dec-14	4:18	69	14.55	2.3	46.5	2.5	46.1	0	
2006-Dec-14	4:18	64	14.56	2.3	47.6	2.4	47.3	0	
2006-Dec-14	4:18								End Tail Slurry
2006-Dec-14	4:18	14	12.19	0.3	48.0	1.0	47.7	0	
2006-Dec-14	4:18								Drop Top Plug
2006-Dec-14	4:18	14	12.28	0.2	48.0	0.8	47.7	0	
2006-Dec-14	4:18								Start Displacement

Well		Field			Service Date		Customer		Job Number
Branstetter Chester Unit ## 304S					06348-Dec-14		OXY RESOURCE CALIFORNIA LLC		2205552342
Date	Time	Treating Pressure	Density	CMT RATE	CMT VOL	NRD RATE	NRD VOLUME TOTAL	0	Message
	24 hr clock	psi	lb/gal	bbl/min	bbl	bbl/min	bbl	0	
2006-Dec-14	4:18	14	12.55	0.1	48.0	0.8	47.7	0	
2006-Dec-14	4:19								Reset Total, Vol = 48.01 bbl
2006-Dec-14	4:19	14	8.00	0.0	48.0	0.3	47.9	0	
2006-Dec-14	4:19	14	8.35	0.0	0.0	0.0	0.0	0	
2006-Dec-14	4:19	14	8.84	0.0	0.0	0.0	0.0	0	
2006-Dec-14	4:20	9	8.75	0.0	0.0	0.0	0.0	0	
2006-Dec-14	4:20	9	8.67	0.0	0.0	0.0	0.0	0	
2006-Dec-14	4:21	9	8.57	0.0	0.0	0.0	0.0	0	
2006-Dec-14	4:21	37	9.92	3.2	0.2	2.4	0.2	0	
2006-Dec-14	4:22	137	8.52	6.4	2.8	6.4	2.6	0	
2006-Dec-14	4:22	119	8.35	6.4	6.0	6.5	5.8	0	
2006-Dec-14	4:23	114	8.28	6.4	9.1	6.5	9.0	0	
2006-Dec-14	4:23	114	8.28	6.4	12.3	10.6	14.0	0	
2006-Dec-14	4:24	133	8.28	6.4	15.5	6.5	17.9	0	
2006-Dec-14	4:24	146	8.26	6.3	18.7	6.5	21.1	0	
2006-Dec-14	4:25	156	8.28	6.3	21.8	6.5	24.3	0	
2006-Dec-14	4:25	169	8.27	6.3	25.0	6.4	27.5	0	
2006-Dec-14	4:26	183	8.28	6.3	28.2	6.5	30.7	0	
2006-Dec-14	4:26	201	7.36	6.4	31.4	6.5	34.0	0	
2006-Dec-14	4:27	211	8.30	6.3	34.6	4.0	37.3	0	
2006-Dec-14	4:27	224	9.28	6.4	37.7	2.4	39.5	0	
2006-Dec-14	4:28	233	8.31	6.3	40.9	6.4	41.0	0	
2006-Dec-14	4:28	247	8.31	6.4	44.1	6.1	43.2	0	
2006-Dec-14	4:29	243	8.31	6.3	47.3	3.4	44.8	0	
2006-Dec-14	4:29	197	8.30	6.4	50.5	4.0	47.2	0	
2006-Dec-14	4:30	288	8.31	6.4	53.6	6.4	50.3	0	
2006-Dec-14	4:30	293	8.31	6.4	56.8	6.4	53.5	0	
2006-Dec-14	4:31	288	8.31	6.3	60.0	6.4	56.7	0	
2006-Dec-14	4:31	302	8.31	6.4	63.2	6.4	59.9	0	
2006-Dec-14	4:32	334	8.31	6.4	66.3	6.4	63.1	0	
2006-Dec-14	4:32	334	8.31	6.4	69.5	6.4	66.3	0	
2006-Dec-14	4:33	343	8.31	6.3	72.7	6.4	69.5	0	
2006-Dec-14	4:33	366	8.31	6.4	75.9	6.4	72.7	0	
2006-Dec-14	4:34	389	8.31	6.4	79.1	6.4	75.9	0	
2006-Dec-14	4:34	417	8.31	6.3	82.3	6.4	79.1	0	
2006-Dec-14	4:35	421	8.31	6.3	85.4	6.4	82.3	0	
2006-Dec-14	4:35	439	8.31	6.3	88.6	6.4	85.5	0	
2006-Dec-14	4:36	462	8.31	6.3	91.8	6.3	88.6	0	
2006-Dec-14	4:36	481	8.31	6.4	95.0	6.4	91.8	0	
2006-Dec-14	4:37	499	8.31	6.4	98.1	6.4	95.0	0	
2006-Dec-14	4:37	540	8.31	6.3	101.3	6.4	98.2	0	
2006-Dec-14	4:38	563	8.31	6.3	104.5	6.4	101.3	0	
2006-Dec-14	4:38	554	8.31	6.4	107.7	6.4	104.5	0	
2006-Dec-14	4:39	604	8.31	6.4	110.9	6.3	107.7	0	
2006-Dec-14	4:39	627	8.31	6.4	114.0	6.4	110.9	0	
2006-Dec-14	4:40	632	8.31	6.4	117.2	6.3	114.0	0	
2006-Dec-14	4:40	517	8.31	2.5	118.9	2.5	115.8	0	
2006-Dec-14	4:41	471	8.31	2.5	120.2	2.5	117.1	0	
2006-Dec-14	4:41	504	8.31	2.5	121.4	2.5	118.3	0	
2006-Dec-14	4:42	577	8.31	2.5	122.6	2.5	119.6	0	
2006-Dec-14	4:42	600	8.31	2.5	123.9	2.5	120.8	0	
2006-Dec-14	4:43	513	8.31	2.5	125.1	2.5	122.1	0	
2006-Dec-14	4:43	526	8.31	2.5	126.4	2.5	123.3	0	
2006-Dec-14	4:44	586	8.31	2.5	127.6	2.5	124.6	0	

Well Branstetter Chester Unit ## 304S		Field		Service Date 06348-Dec-14		Customer OXY RESOURCE CALIFORNIA LLC		Job Number 2205552342	
Date	Time 24 hr Clock	Treating Pressure psi	Density lb/gal	CMT RATE bbl/min	CMT VOL bbl	NRD RATE bbl/min	NRD VOLUME TOTAL bbl	0 0	Message
2006-Dec-14	4:44	989	8.31	0.0	128.5	0.0	125.7	0	
2006-Dec-14	4:45	989	8.31	0.0	128.5	0.0	125.7	0	
2006-Dec-14	4:45	188	8.31	0.0	128.5	0.0	125.7	0	
2006-Dec-14	4:46	14	8.31	0.0	128.5	0.0	125.7	0	
2006-Dec-14	4:46	27	8.31	0.0	128.5	0.0	125.7	0	
2006-Dec-14	4:46	27	8.31	0.0	128.5	0.0	125.7	0	
2006-Dec-14	4:46								Stopped Acquisition
Post Job Summary									
Average Pump Rates, bpm					Volume of Fluid Injected, bbl				
Slurry	N2	Mud	Maximum Rate	Total Slurry	Mud	Spacer	N2		
5			6	273.5		10			
Treating Pressure Summary, psi					Breakdown Fluid				
Maximum	Final	Average	Bump Plug to	Breakdown	Volume	Density			
550		250	1000			8.34 lb/gal			
Avg. N2 Percent	Designed Slurry Volume	Displacement	Mix Water Temp	<input checked="" type="checkbox"/> Cement Circulated to Surface?	Volume				
%	273.5 bbl	125.54 bbl	°F	<input type="checkbox"/> Washed Thru Perfs	To	65	bbl		
Customer or Authorized Representative	Schlumberger Supervisor								
Bevans, Ronald	Flanagan, Patrick			<input type="checkbox"/> Circulation Lost		<input checked="" type="checkbox"/> Job Completed			

Well Information			
Company:	Oxy	Stage:	Single
Well Name:	Bransettler C	Job Type:	Surface
Well Number:	304S	Job Date:	12/14/2006
Spacer and Water			
Spacer(bbls)	10	Spcr Hydro(PSI)	58.93
Fresh Water		Total Water(bbls)	429.21
Cement Totals			
Lead sks	585	Lead CF	1275.3
Yeild	2.18	Lead(bbls)	227.13
Water req.	7251.08	BBLS Water	172.64
Weight	12.2	Lead Height(ft)	1420.40
35:65 Poz C + 6%D20 +2%S1		Lead Hydro(PSI)	901.10
+ 0.5 PPS D130		Excess(bbls)	122.72
Tail sks	195	Tail CF	261.3
Yeild	1.34	Tail BBLS	46.538
Water req	1238.84	BBLS Water	29.496
Weight	14.8	Tail Height(ft)	594.60
Class C + 2%S1 + 0.125PPS D130		Tail Hydro(PSI)	457.60
Capacity Information			
Casing ID	8.097	bbls/ft casing	0.0637
Casing OD	8.625	bbls/ft annular	0.0735
Casing Weight	24	Casing cap.(bbls)	128.37
Open Hole ID	12.25	Displacement(bbls)	125.54
Casing length	2015.63	Shoe Cap.(bbls)	2.83
Shoe length	44.45	Annular cap.(bbls)	148.12
Annular length	2015	Hole Cap.(bbls)	293.56
Bump & Lift			
Displ Fluid Wt.	8.33	Disp Hydro(PSI)	853.84
Drilling Fluid Wt.	9.20	Lift(PSI)	504.87
		Casing Lift(PSI)	756.49

Well	Branstetter Chester Unit #304S	Client	Oxy Resource California LLC
Field		SIR No.	
Engineer		Job Type	8 5/8" surface
Country	United States	Job Date	12-13-2006

