

STATE CORPORATION COMMISSION OF KANSAS
OIL & GAS CONSERVATION DIVISION
WELL COMPLETION FORM
ACO-1 WELL HISTORY
DESCRIPTION OF WELL AND LEASE

CONFIDENTIAL

API NO. 15- 14-203220000
County Osborne **ORIGINAL**

Operator: License # 3293
Name: Russell Oil, Inc.
Address P.O. Box 272

City/State/Zip Russell, KS. 67665

40' W of
N/2 NE SW Sec. 35 Twp. 9S Rge. 12W X
2310' Feet from SW (circle one) Line of Section
3340' Feet from EW (circle one) Line of Section

Purchaser: N/A
Operator Contact Person: LeRoy Holt II
Phone (913) 483-3954
Contractor: Name: Shields Oil Producers Inc

Footages Calculated from Nearest Outside Section Corner:
NE, SE, NW or SW (circle one)
Lease Name Sigle Trust "A" Well # 1
Field Name Wildcat

License: 5184
Wellsite Geologist: Francis Whisler
Designate Type of Completion
 New Well Re-Entry Workover
 Oil SWD SLOW Temp. Abd.
 Gas ENHR SIGW
 Dry Other (Core, MSW, Expl., Cathodic, etc)

Producing Formation N/A
Elevation: Ground 1865' KB 1870'
Total Depth 3437 PBTD

If Workover/Re-Entry: old well info as follows:
Operator: _____
Well Name: _____
Comp. Date _____ Old Total Depth _____
 Deepening Re-perf. Conv. to Inj/SWD
 Plug Back PBTD
 Commingled Docket No. _____
 Dual Completion Docket No. _____
 Other (SWD or Inj?) Docket No. _____
7-16-96 7-23-96 7-23-96
Spud Date Date Reached TD Completion Date

Amount of Surface Pipe Set and Cemented at 207' Feet
Multiple Stage Cementing Collar Used? Yes No
If yes, show depth set _____ Feet
If Alternate II completion, cement circulated from _____
feet depth to _____ w/ _____ sx cnt.

Drilling Fluid Management Plan Per A, 9-24-98 U.C.
(Data must be collected from the Reserve Pit)
Chloride content 79K ppm Fluid volume 375 bbls
Dewatering method used evaporation

Location of fluid disposal if hauled off site: see
Operator see
Lease Name see License No. _____
Quarter Sec. _____ Twp. _____ S Rng. _____ E/W
RELEASED 10-1-98 JUL 24
CONFIDENTIAL
FROM CONFIDENTIAL Docket No. _____

INSTRUCTIONS: An original and two copies of this form shall be filed with the Kansas Corporation Commission, 200 Colorado Derby Building, Wichita, Kansas 67202, within 120 days of the spud date, recompletion, workover or conversion of a well. Rule 82-3-130, 82-3-106 and 82-3-107 apply. Information on side two of this form will be held confidential for a period of 12 months if requested in writing and submitted with the form (see rule 82-3-107 for confidentiality in excess of 12 months). One copy of all wireline logs and geologist well report shall be attached with this form. ALL CEMENTING TICKETS MUST BE ATTACHED. Submit CP-4 form with all plugged wells. Submit CP-111 form with all temporarily abandoned wells.

All requirements of the statutes, rules and regulations promulgated to regulate the oil and gas industry have been fully complied with and the statements herein are complete and correct to the best of my knowledge.

Signature [Signature] V.P.
Title Vice-President Date 7-24-96
Subscribed and sworn to before me this 24 day of July
19 96.
Notary Public [Signature]
Date Commission Expires _____

K.C.C. OFFICE USE ONLY
 Letter of Confidentiality Attached
 Wireline Log Received
 Geologist Report Received
Distribution
 SHD/Rep NGPA
 Plug Other (Specify)
RECEIVED
JUL 25 1996
KANSAS CORPORATION COMMISSION
CONSERVATION DIVISION
WICHITA, KS

CAROLYN GNAD
NOTARY PUBLIC
STATE OF KANSAS
MY APPT EXPIRES 10-22-97

7-25-96 Form ACO-1 (7-91)

Operator Name Russell Oil, Inc.

Lease Name Single Trust "A"
 County Osborne

Well # 1

Sec. 35 Twp. 19 Rge. 12

East
 West

INSTRUCTIONS: Show important tops and base of formations penetrated. Detail all cores. Report all drill stem tests-giving interval tested, time tool open and closed, flowing and shut-in pressures, whether shut-in pressure reached static level hydrostatic pressures, bottom hole temperature, fluid recovery, and flow rates if gas to surface during test. Attach extra sheets if more space is needed. Attach copy of log.

Drill Stem Tests Taken Yes No
 (Attach Additional Sheets.)

Samples Sent to Geological Survey Yes No

Cores Taken Yes No

Electric Log Run Yes No
 (Submit Copy.)

List All E.Logs Run: Radiation Guard Log

Log Formation (Top), Depth and Datum Sample

Name	Top	Datum
Anhy..	917-948'	+953
Topeka	2802'	-932
Heebner	3044'	-1174
Toronto	3068'	-1198
LKC	3102'	-1232
BKC	3422'	-1556
LTD	3437'	-1567

CASING RECORD <input checked="" type="checkbox"/> New <input type="checkbox"/> Used							
Report all strings set-conductor, surface, intermediate, production, etc.							
Purpose of String	Size Hole Drilled	Size Casing Set (in O.D.)	Weight Lbs./Ft.	Setting Depth	Type of Cement	# Sacks Used	Type and Percent Additives
Surface	12 1/4"	8 5/8"	20#	207	60/40 poz	140	3% C.C. 2% gel.

ADDITIONAL CEMENTING/SQUEEZE RECORD				
Purpose:	Depth	Type of Cement	#Sacks Used	Type and Percent Additives
<input type="checkbox"/> Perforate	3200-3250	100		
<input type="checkbox"/> Protect Casing				
<input type="checkbox"/> Plug Back TD				
<input type="checkbox"/> Plug Off Zone				

Shots Per Foot	PERFORATION RECORD - Bridge Plugs Set/Type		Acid, Fracture, Shot, Cement Squeeze Record	
	Specify Footage of Each Interval Perforated		(Amount and Kind of Material Used)	Depth

TUBING RECORD Size _____ Set At _____ Packer At _____ Liner Run Yes No

Date of First, Resumed Production, SWD or Inj. 1-4-54 Producing Method Flowing Pumping Gas Lift Other (Explain)

Estimated Production Per 24 Hours Oil 3000 Bbls. Gas 100 Mcf Water 100 Bbls. Gas-Oil Ratio _____ Gravity _____

Disposition of Gas: Vented Sold Lease Other (Specify) _____

METHOD OF COMPLETION Open Hole Perf. Dually Comp. Commingled Other (Specify) _____

Production Interval _____

CONFIDENTIAL

ORIGINAL

FRANCIS C. WHISLER
CERTIFIED PETROLEUM GEOLOGIST
AAPG and CPG #1933
RUSSELL, KANSAS 67665

15-141-20322-00-00



RELEASED

OCT 1 1998

FROM CONFIDENTIAL

RUSSELL OIL, INC.
Russell, Kansas

GEOLOGICAL REPORT
SIGLE TRUST A-1
40' West of N/2 NE SW
Sec. 35, T 9 S, R 12 W
Osborne County, Kansas

15-141-20322

KCC
JUL 24
CONFIDENTIAL

July 23, 1996

RECEIVED
KANSAS CORPORATION COMMISSION

JUL 25 1996

CONSERVATION DIVISION
WICHITA, KS

CONFIDENTIAL

ORIGINAL

15-141-20322-00-00

RUSSELL OIL, INC.
P O Box 272
Russell, Kansas

RELEASED

OCT 1 1998

Geological Report:

SIGLE TRUST A-1
40' W of N/2 NE SW FROM CONFIDENTIAL
Sec. 35, 9S, 12W
Osborne County, Kansas

Contractor: Shields Drilling Co., Inc.

Drilling Commenced: July 16, 1996

Drilling Completed: July 23, 1996

Casing Record: 8 5/8" surface casing set at 207' with 140 sacks cement.

Samples: Saved and examined from 2700' to 3440', RTD. Zones of interest are described in this report. Samples will be sent to the Kansas Sample Library at 4150 Monroe, Wichita, Kansas.

Drilling Time: Recorded and plotted from 2700' to 3440', RTD. A copy of the drilling time/lithology log is included with this report.

Drillstem Tests: 2 by Trilobite Testing, LLC.

Electric Logs: Radiation-Guard-Caliper by Mercury Wireline, Inc. KCC

Elevations: Kelly Bushing: 1870' JUL 24
 Ground Level: 1865
 Measurements From: K. B. CONFIDENTIAL

FORMATIONS:

	Rotary Depths:	E. Log Depths:	Datums: E. Log
Anhydrite	919-951	917-948	+ 953
Howard Lime	2768	2764	- 894
Topeka Lime	2806	2802	- 932
Heebner Shale	3048	3044	-1174
Toronto Lime	3072	3068	-1198
Lansing-Kansas City	3104	3102	-1232
C Zone Porosity	3158	3155	-1285
Base of Kansas City	3426	3422	-1556
Total Dethp	3440	3437	-1567

15-141-20322-00-00

Lithology; Zones of Interest & Test Data: (Corrected to E. Log Depths)

Lansing-Kansas City:

3102-3112: LS-white, light gray, buff, dense to slight pin hole and fine
A zone crystalline porosity. Rare scattered light oil stain with
very faint odor but no free oil. Tested by DST #1.

DRILLSTEM TEST No. 1: 3082-3115 (3079-3112)

Tool Open: 30 min. with very weak blow 20 min.

Tool Shut In: 60 min.

Recovery: 3' mud with spots of oil

FP: 30-30

BHP: 918

3133-3140: LS-White, light gray, buff, dense to cherty with white blocky
B zone chert. Some fine oolitic and fossil porosity with rare
light and dark oil stain. No free oil or odor. Tested by
DST #2.

DRILLSTEM TEST No. 2: 3114-3143 (3111-3140)

Tool Open: 30 min. with very weak blow 10 min.

Tool Shut In: 60 min.

Recovery: 10' of mud with few oil spots

FP: 22-22

BHP: 1130

3155-3166: LS-white, buff, light gray, fine-medium oolitic and oolitic
C zone with good porosity and no show of oil or stain. Barren.
Not tested. This zone is productive on the Sigle Trust Lse.

KCC

JUL 24

CONFIDENTIAL

RELEASED

OCT 1 1998

FROM CONFIDENTIAL

TRILOBITE TESTING L.L.C.

OPERATOR : Russell Oil Inc
 WELL NAME: Sigle Trust B #1
 LOCATION : 35-9S-12W, Osborne Cty KS
 INTERVAL : 3082.00 To 3115.00 ft

DATE 07/21/96
 KB 1870.00 ft TICKET NO: 9420 DST #1
 GR 1865.00 ft FORMATION: LKC "A"
 TD 3115.00 ft TEST TYPE: CONV

15-141-20322

RECORDER DATA

Mins	Field	1	2	3	4	TIME DATA-----
PF 30 Rec.	24174	24174	10992			PF Fr. 0843 to 0913 hr
SI 60 Range(Psi)	3050.0	3050.0	4250.0	0.0	0.0	IS Fr. 0913 to 1013 hr
SF 5 Clock(hrs)	12	12	12			SF Fr. 1013 to 1018 hr
FS 0 Depth(ft)	3087.0	3087.0	3110.0	0.0	0.0	FS Fr. to hr

	Field	1	2	3	4	
A. Init Hydro	1515.0	1500.0	0.0	0.0	0.0	T STARTED 0741 hr
B. First Flow	30.0	16.0	0.0	0.0	0.0	T ON BOTM 0840 hr
B1. Final Flow	30.0	16.0	0.0	0.0	0.0	T OPEN 1843 hr
C. In Shut-in	918.0	908.0	0.0	0.0	0.0	T PULLED 1018 hr
D. Init Flow	0.0	0.0	0.0	0.0	0.0	T OUT 1114 hr
E. Final Flow	0.0	0.0	0.0	0.0	0.0	
F. Fl Shut-in	0.0	0.0	0.0	0.0	0.0	
G. Final Hydro	1469.0	1450.0	0.0	0.0	0.0	TOOL DATA-----
Inside/Outside	I	I	O			Tool Wt. 1500.00 lbs

RECOVERY

Tot Fluid 3.00 ft of 0.00 ft in DC and 3.00 ft in DP
 3.00 ft of Mud w/ oil spots

Wt Set On Packer	30000.00 lbs
Wt Pulled Loose	45000.00 lbs
Initial Str Wt	44000.00 lbs
Unseated Str Wt	44000.00 lbs
Bot Choke	0.75 in
Hole Size	7.88 in
D Col. ID	2.25 in
D. Pipe ID	3.80 in
D.C. Length	0.00 ft
D.P. Length	3086.00 ft

SALINITY 0.00 P.P.M. A.P.I. Gravity 0.00

BLOW DESCRIPTION

Initial Flow -
 Weak surface blow died in 20 min

Final Flow -
 No blow

MUD DATA-----	Chemical
Mud Type	
Weight	8.90 lb
Vis.	55.00 S/1
W.L.	8.40 in
F.C.	0.00 in
Mud Drop	

Amt. of fill	0.00 ft
Btm. H. Temp.	102.00 F
Hole Condition	
% Porosity	0.00
Packer Size	6.75 in
No. of Packers	2
Cushion Amt.	0.00
Cushion Type	
Reversed Out	
Tool Chased	
Tester	Paul Simpson
Co. Rep.	Francis Whisler
Contr.	Shields
Rig #	
Unit #	
Pump T.	

RELEASED

OCT 1 1998

FROM CONFIDENTIAL

SAMPLES:
 SENT TO:

Test Successful: Y

NO
JUL 24
CONFIDENTIAL

ORIGINAL

CONFIDENTIAL

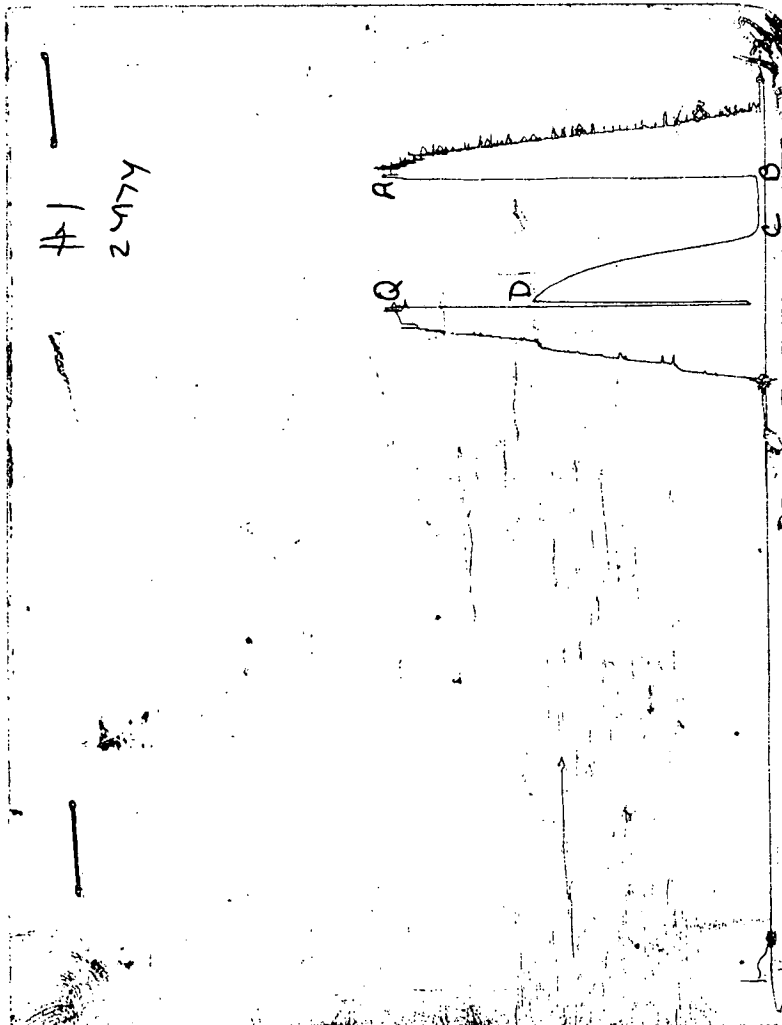
15-141-20322-0000

RELEASED

OCT 1 1998

FROM CONFIDENTIAL

CHART PAGE



This is a photocopy of the actual AK-1 recorder chart

KCC

JUL 24

CONFIDENTIAL

RECEIVED
KANSAS CORPORATION COMMISSION

JUL 25 1996

CONSERVATION DIVISION
WICHITA, KS

TRILOBITE TESTING L.L.C.

OPERATOR : Russell Oil Inc
 WELL NAME: Sigle Trust B #1
 LOCATION : 35-9S-12W, Osborne Cty. KS
 INTERVAL : 3114.00 To 3143.00 ft

DATE 07/21/96
 KB 1870.00 ft TICKET NO: 9421 DST #2
 GR 1865.00 ft FORMATION: LKC "B"
 TD 3143.00 ft TEST TYPE: CONV

RECORDER DATA

Mins	Field	1	2	3	4	TIME DATA-----
PF 30 Rec.	24174	24174	10992			PF Fr. 1743 to 1813 hr
SI 60 Range(Psi)	3050.0	3050.0	4250.0	0.0	0.0	IS Fr. 1813 to 1913 hr
SF 0 Clock(hrs)	12	12	12			SF Fr. to hr
FS 0 Depth(ft)	3120.0	3120.0	3138.0	0.0	0.0	FS Fr. to hr

	Field	1	2	3	4	
A. Init Hydro	1522.0	1517.0	0.0	0.0	0.0	T STARTED 1648 hr
B. First Flow	22.0	25.0	0.0	0.0	0.0	T ON BOTM 1740 hr
B1. Final Flow	22.0	25.0	0.0	0.0	0.0	T OPEN 1743 hr
C. In Shut-in	1130.0	1134.0	0.0	0.0	0.0	T PULLED 1913 hr
D. Init Flow	0.0	0.0	0.0	0.0	0.0	T OUT 2018 hr
E. Final Flow	0.0	0.0	0.0	0.0	0.0	
F. Fl Shut-in	0.0	0.0	0.0	0.0	0.0	
G. Final Hydro	1499.0	1498.0	0.0	0.0	0.0	
Inside/Outside	I	I	O			

RECOVERY

Tot Fluid 10.00 ft of 0.00 ft in DC and 10.00 ft in DP
 10.00 ft of Mud w/ few oil spots

SALINITY 0.00 P.P.M. A.P.I. Gravity 0.00

BLOW DESCRIPTION

Initial Flow -
 Weak surface died in 10 minutes

SAMPLES:
 SENT TO:

RELEASED
OCT 1 1998
FROM CONFIDENTIAL

Test Successful: Y

TOOL DATA-----

Tool Wt. 0.00 lbs
 Wt Set On Packer 25000.00 lbs
 Wt Pulled Loose 0.00 lbs
 Initial Str Wt 42000.00 lbs
 Unseated Str Wt 0.00 lbs
 Bot Choke 0.75 in
 Hole Size 7.88 in
 D Col. ID 2.25 in
 D. Pipe ID 3.80 in
 D.C. Length 0.00 ft
 D.P. Length 3117.00 ft

MUD DATA-----

Mud Type Chemical
 Weight 8.90 lb/
 Vis. 55.00 S/I
 W.L. 8.40 in
 F.C. 0.00 in
 Mud Drop

Amt. of fill 0.00 ft
 Btm. H. Temp. 100.00 F
 Hole Condition
 % Porosity 0.00
 Packer Size 6.75 in
 No. of Packers 2
 Cushion Amt. 0.00
 Cushion Type
 Reversed Out
 Tool Chased
 Tester Paul Simpson
 Co. Rep. Francis Whisler
 Contr. Shields
 Rig #
 Unit #
 Pump T.

ORIGINAL

CONFIDENTIAL

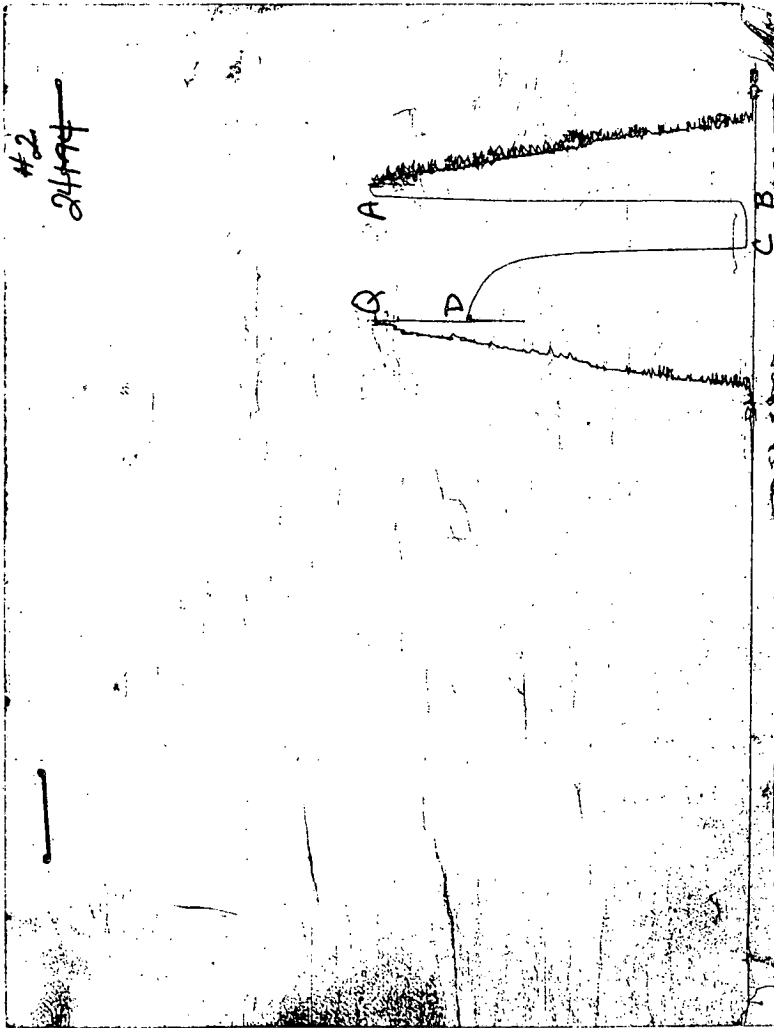
15-141-20322-0000

RELEASED

OCT 1 1998

FROM CONFIDENTIAL

CHART PAGE



This is a photocopy of the actual AK-1 recorder chart

RCC

JUL 24

CONFIDENTIAL

ALLIED CEMENTING CO., INC. 7063

15-141-203220000

CONFIDENTIAL

REMIT TO P.O. BOX 31
RUSSELL, KANSAS 67665

ORIGINAL

SERVICE POINT: Russell

DATE <u>7-16-96</u>	SEC. <u>35</u>	TWP. <u>9</u>	RANGE <u>12</u>	CALLED OUT	ON LOCATION <u>9 PM</u>	JOB START	JOB FINISH <u>10:15 PM</u>
LEASE <u>Single Trust</u>		WELL# <u>A-1</u>	LOCATION <u>Luray 5N 3E 3N 4E</u>			COUNTY <u>Osborne</u>	STATE <u>Kan</u>

OLD OR NEW (Circle one)

CONTRACTOR Shields Dr/g

TYPE OF JOB Surface

HOLE SIZE 12 1/4 T.D. 210

CASING SIZE 8 5/8 DEPTH 207

TUBING SIZE _____ DEPTH _____

DRILL PIPE _____ DEPTH _____

TOOL _____ DEPTH _____

PRES. MAX _____ MINIMUM _____

MEAS. LINE _____ SHOE JOINT _____

CEMENT LEFT IN CSG. 15'

PERFS. _____

OWNER _____

CEMENT

AMOUNT ORDERED 140 40 3% 44 2% 6el

COMMON _____ @ _____

POZMIX _____ @ _____

GEL _____ @ _____

CHLORIDE _____ @ _____

_____ @ _____

_____ @ _____

_____ @ _____

_____ @ _____

_____ @ _____

HANDLING _____ @ _____

MILEAGE RELEASED

EQUIPMENT

PUMP TRUCK CEMENTER M Adoo

177 HELPER Will

BULK TRUCK

213 DRIVER Darin

BULK TRUCK

_____ DRIVER _____

OCT 1 1998 TOTAL NO

REMARKS:

FROM CONFIDENTIAL SERVICE

JUL 24
CONFIDENTIAL

Cement Did Limit

DEPTH OF JOB _____

PUMP TRUCK CHARGE _____

EXTRA FOOTAGE _____ @ _____

MILEAGE _____ @ _____

PLUG _____ @ _____

_____ @ _____

_____ @ _____

CHARGE TO: Russell Oil

STREET _____

CITY Russell STATE Kan ZIP 67665

FLOAT EQUIPMENT

RECEIVED _____ @ _____

KANSAS CORPORATION COMMISSION _____ @ _____

JUL 25 1996 _____ @ _____

_____ @ _____

CONSERVATION DIVISION
WICHITA, KS

TOTAL _____

TAX _____

TOTAL CHARGE _____

DISCOUNT _____ IF PAID IN 30 DAYS

To Allied Cementing Co., Inc.
You are hereby requested to rent cementing equipment and furnish cementer and helper to assist owner or contractor to do work as is listed. The above work was done to satisfaction and supervision of owner agent or contractor. I have read & understand the "TERMS AND CONDITIONS" listed on the reverse side.

SIGNATURE Barton Beery

15-141-20322-00-00 ALLIED CEMENTING CO., INC. 7378

REMIT TO: P.O. BOX 31
RUSSELL, KANSAS 67665

ORIGINAL CONFIDENTIAL

SERVICE POINT
Russell

DATE <u>7-23-96</u>	SEC. <u>35</u>	TWP. <u>9s</u>	RANGE <u>12w</u>	CALLED OUT <u>2:00 AM</u>	ON LOCATION <u>3:30 AM</u>	JOB START <u>3:45 AM</u>	JOB FINISH <u>5:15 AM</u>
LEASE <u>TRUST</u>		WELL # <u>A-1</u>	LOCATION <u>LURAY SN 3E 2 1/2 N</u>	COUNTY <u>DEBONE</u>	STATE <u>KANSAS</u>		

OLD OR NEW (Circle one)

CONTRACTOR SHIELD'S DALE Rig #2

TYPE OF JOB ROTARY Plug

HOLE SIZE 7 7/8 T.D. 3440'

CASING SIZE 8 5/8 Surface DEPTH 207'

TUBING SIZE _____ DEPTH _____

DRILL PIPE 4 1/2 F-H DEPTH 920'

TOOL _____ DEPTH _____

PRES. MAX _____ MINIMUM _____

MEAS. LINE _____ SHOE JOINT _____

CEMENT LEFT IN CSG. _____

PERFS. _____

OWNER _____

CEMENT

AMOUNT ORDERED 200 SK 60% 6% GEL
1/4# F10-Seal
PER SK

COMMON _____ @ _____

POZMIX _____ @ _____

GEL _____ @ _____

CHLORIDE _____ @ _____

RELEASED

OCT 1 1996

FROM CONFIDENTIAL

HANDLING _____ @ _____

MILEAGE _____ @ _____

EQUIPMENT

PUMP TRUCK CEMENTER John

177 HELPER Paul

BULK TRUCK _____

213 DRIVER Jason

BULK TRUCK _____

_____ DRIVER _____

TOTAL _____

CONFIDENTIAL

REMARKS:

- 25 SK @ 920'
 - 100 SK @ 765'
 - 40 SK @ 250'
 - 10 SK @ 40' + Plug
 - 15 SK @ Rat Hole
 - 10 SK @ Mouse Hole
- Thanks

DEPTH OF JOB _____

PUMP TRUCK CHARGE _____

EXTRA FOOTAGE _____ @ _____

MILEAGE _____ @ _____

PLUG 1-8 5/8 DRY Hd @ _____

CHARGE TO: RUSSELL Oil

STREET _____

CITY _____ STATE _____ ZIP _____

TOTAL _____

FLOAT EQUIPMENT

RECEIVED
KANSAS CORPORATION COMMISSION

JUL 25 1996

CONSERVATION DIVISION

TAX _____

TOTAL CHARGE _____

DISCOUNT _____ IF PAID IN 30 DAYS

To Allied Cementing Co., Inc.
You are hereby requested to rent cementing equipment and furnish cementer and helper to assist owner or contractor to do work as is listed. The above work was done to satisfaction and supervision of owner agent or contractor. I have read & understand the "TERMS AND CONDITIONS" listed on the reverse side.

SIGNATURE Henry Pink

FRANCIS C. WHISLER
 CERTIFIED PETROLEUM GEOLOGIST
 AAPG and CPG #1933
 RUSSELL, KANSAS 67665

CONFIDENTIAL

CONFIDENTIAL

ORIGINAL

GEOLOGIC LOG

RUSSELL OIL, INC.
 P O BOX 272
 RUSSELL, KANSAS

SIGLE TRUST A-1
 40' W of N/2 NE SW
 Sec. 35, 9S, 12W
 Osborne County, Kansas

Contractor: Shields Drilling Co., Inc.

Casing Record:

Commenced: July 16, 1996

8 5/8" @ 207' w/ 140 sx

Completed: July 23, 1996

Elevations: KB 1870'
 GL 1865

15-141-20322

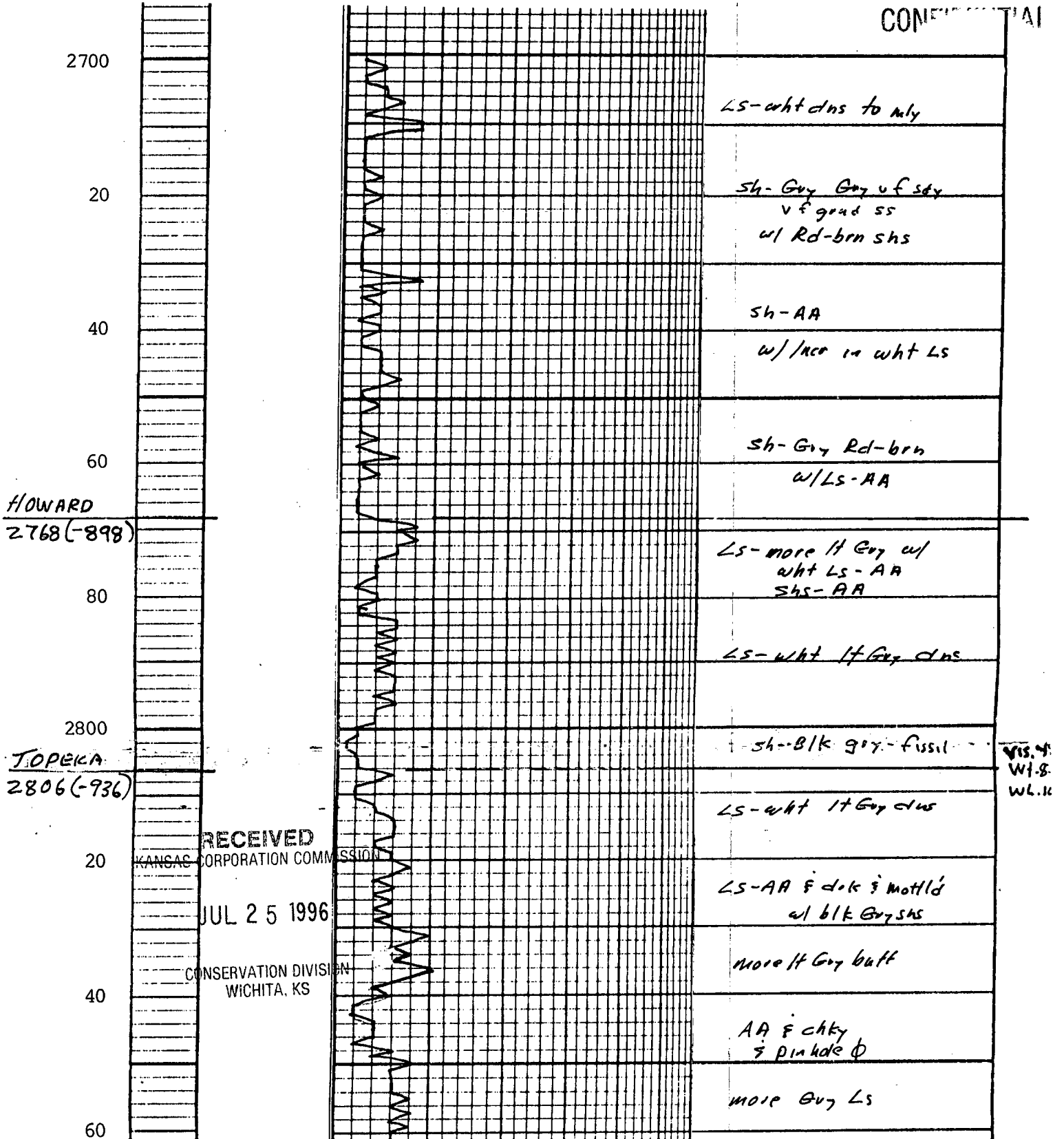
FORMATIONS:

	RELEASED	Rotary	E. Log	Datums:
		Depths:	Depths:	
Anhydrite		919-951	917-948	+ 953
Howard Lime	OCT 1 1998	2768	2764	- 894
Topeka Lime		2806	2802	- 932
Heebner Shale	FROM CONFIDENTIAL	3048	3044	-1174
Toronto Lime		3072	3068	-1198
Lansing-Kansas City		3104	3102	-1232
Base of Kansas City		3426	3422	-1556
Total Depth		3440	3437	-1567

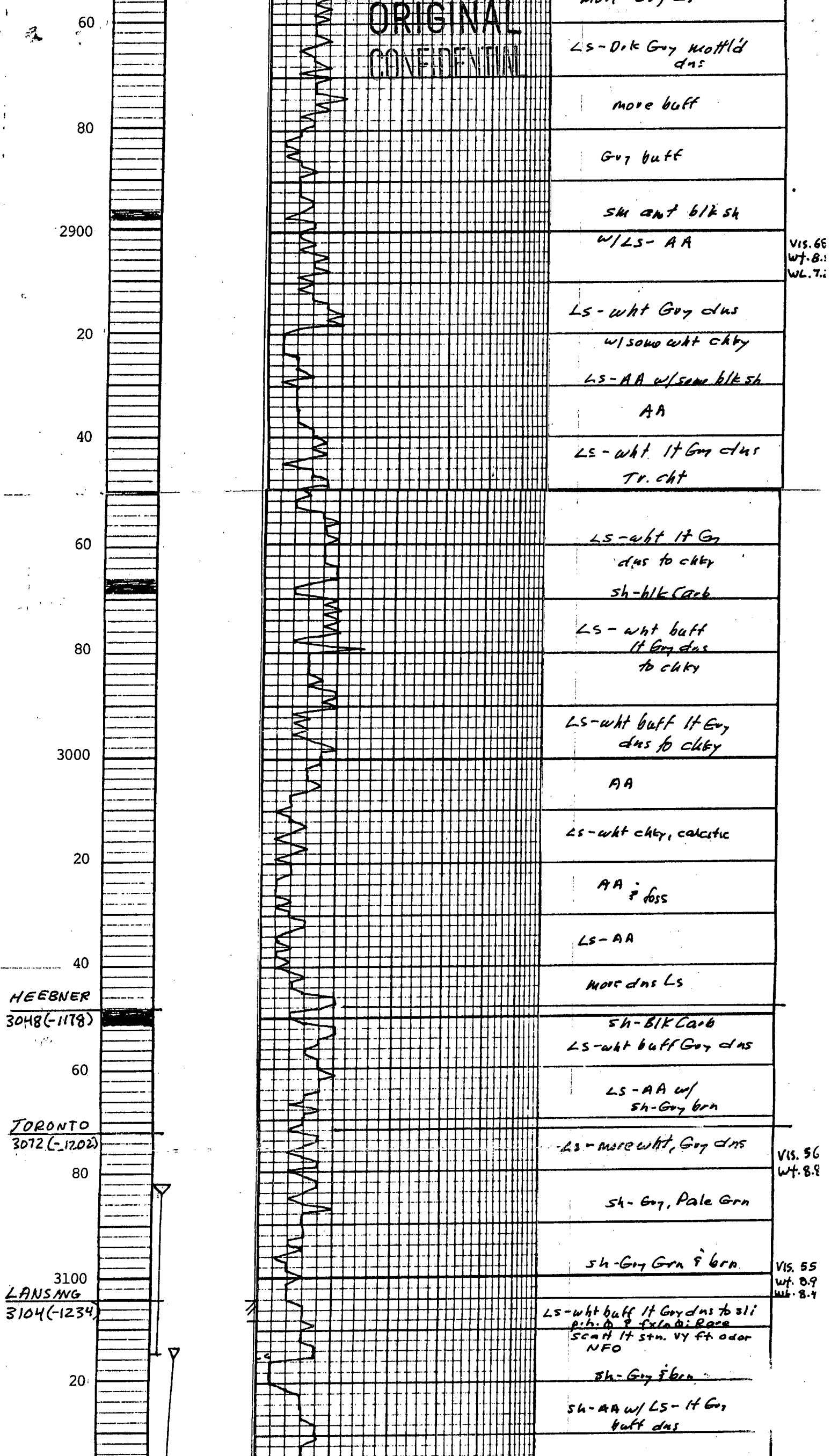
NOV

JUL 24

CONFIDENTIAL



ORIGINAL
CONFIDENTIAL



LS-Drk Gyr mottld dms

more buff

Gyr buff

sh ant blk sh

w/LS-AA

LS-wht Gyr dms

w/ some wht chky

LS-AA w/ some blk sh

AA

LS-wht lt Gyr dms

Tr. chf

LS-wht lt Gyr

dms to chky

sh-blk Carb

LS-wht buff lt Gyr dms

to chky

LS-wht buff lt Gyr dms

to chky

AA

LS-wht chky, calcitic

AA f foss

LS-AA

more dms LS

sh-BLK Carb

LS-wht buff Gyr dms

LS-AA w/ sh-Gyr brn

LS-more wht, Gyr dms

sh-Gyr, Pale Grn

sh-Gyr Grn f brn

LS-wht buff lt Gyr dms to bli p.h. d. f. xla. d. Race SCAT lt str. v. ft odor NFO

sh-Gyr f brn

sh-AA w/ LS-lt Gyr buff dms

VIS. 66
Wt. 8.1
WL. 7.1

VIS. 56
Wt. 8.8

VIS. 55
Wt. 8.9
WL. 8.4

HEEBNER
3048(-1178)

TORONTO
3072(-1202)

3100
LANSANG
3104(-1234)

60

80

2900

20

40

60

80

3000

20

40

60

80

3100

20

ORIGINAL
CONFIDENTIAL

sh-AA w/LS - lt Gyr
buff dns

LS - wht lt Gyr buff dns to
chty w/ wht blk chrt
f' oolc - f'iss w/ Rare lt
f' Dnk str. NFO or Odar

sh-Gyr brn f' grn w/
Dns ls f' blk chrt

LS - wht buff lt Gyr
f - moolc-ool - barren Φ
No show

LS - wht buff lt Gyr
dns

LS - AA w/ Gyr blk brn Sh

sh-Gyr f' blk
w/LS - AA

LS - Gyr dns
w/ blk chrt

LS - wht lt Gyr f - m
oolc-oolc
w/ wht chrt

LS - wht lt Gyr f - m - c
oolc - barren
No show

LS - oolc - AA

LS - AA

LS - wht lt Gyr f' drty Gyr
dns

LS - AA
w/ blk chrt

sh - blk Gyr Gyr

LS - wht Gyr dns w/
wht oolc ls

LS - AA

sh - Gyr

LS - Gyr dns w/ blk chrt
f' oolc LS - AA

sh - blk f'iss

LS - lt Gyr buff dns - chty
w/ wht buff oolc LS

LS - AA w/ oolc - AA

sh - blk f'iss

LS - wht buff dns - chty
w/ good oolc LS - Φ

LS - wht buff dns
x/m f' dolomitic
f' sucrosic

sh - blk f' Gyr

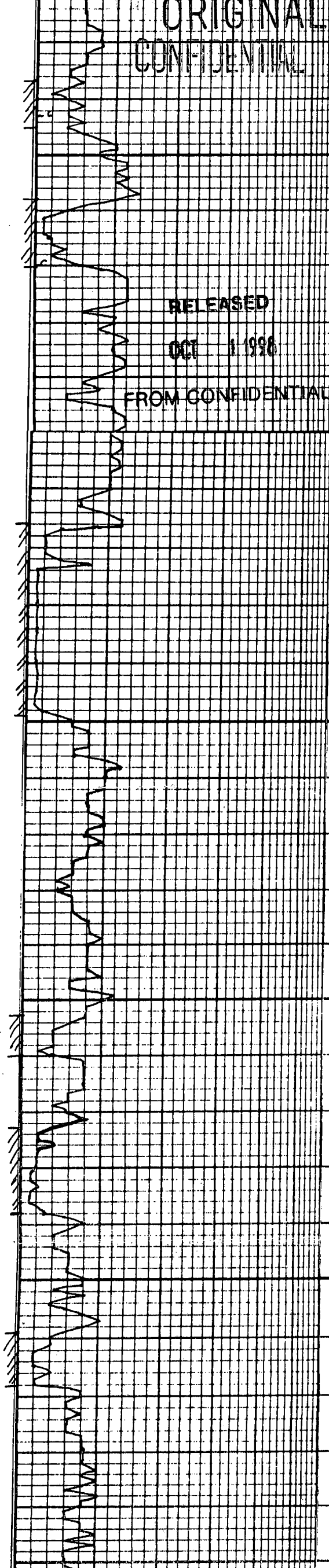
RELEASED
OCT 1 1998
FROM CONFIDENTIAL

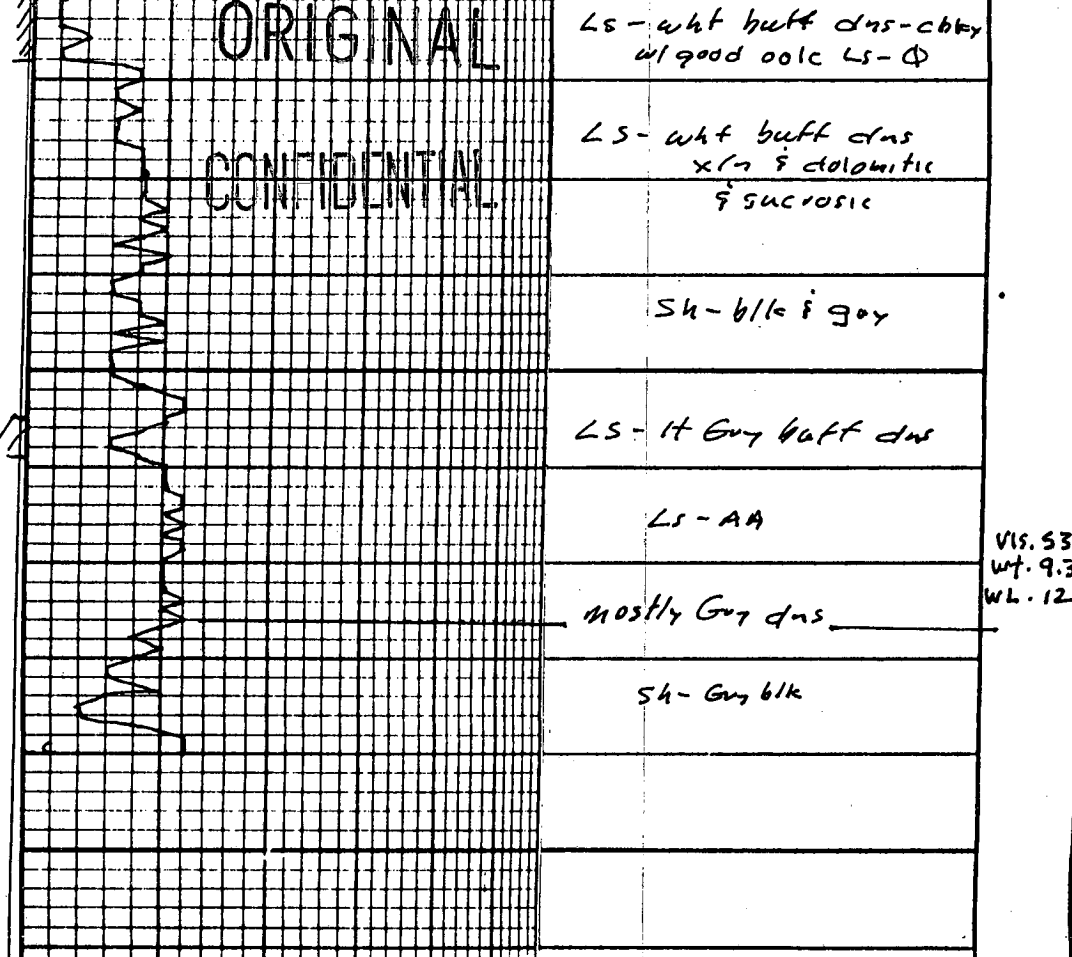
vis. 5:
wt. 8.1

vis. 6D
wt. 9
wl. 8.4

vis. 4B
wt. 9.1
wl. 10

40
60
80
3200
20
40
60
80
3300
20
40
60
80
3400





DRILLSTEM TEST #1: 3082-3115 (3079-3112) A zone

Tool open 30 minutes with very weak blow 20 min.
 Tool shut in: 60 minutes

Recovery: 3' of mud with spots of oil

FP: 30-30

BHP: 918

DRILLSTEM TEST #2: 3114-3143 (3111-3140) B zone

Tool open 30 minutes with very weak blow 10 min.
 Tool shut in: 60 minutes

Recovery: 10' of mud with spots of oil

FP: 22-22

BHP: 1130

KCC
 JUL 24
 CONFIDENTIAL

RELEASED

OCT 1 1998

FROM CONFIDENTIAL

RECEIVED
 KANSAS CORPORATION COMMISSION

JUL 25 1996

CONSERVATION DIVISION
 WICHITA, KS