

**CONFIDENTIAL**

KANSAS CORPORATION COMMISSION  
OIL & GAS CONSERVATION DIVISION

**ORIGINAL**

Form ACO-1  
September 1999  
Form Must Be Typed

**WELL COMPLETION FORM**

**WELL HISTORY - DESCRIPTION OF WELL & LEASE**

Operator: License # 5822  
Name: VAL Energy, Inc.  
Address: 200 W. Douglas Ste. 520  
City/State/Zip: Wichita, KS 67202  
Purchaser: Maclaskey Oilfield Services  
Operator Contact Person: K. Todd Allam  
Phone: (316) 263-6688  
Contractor: Name: VAL Energy, Inc.  
License: 5822  
Wellsite Geologist: Bob Bayer

**KCC**  
**AUG 18 2006**  
**CONFIDENTIAL**

Designate Type of Completion:  
 New Well     Re-Entry     Workover  
 Oil     SWD     SLOW     Temp. Abd.  
 Gas     ENHR     SIGW  
 Dry     Other (Core, WSW, Expl., Cathodic, etc)

If Workover/Re-entry: Old Well Info as follows:

Operator: \_\_\_\_\_

Well Name: \_\_\_\_\_

Original Comp. Date: \_\_\_\_\_ Original Total Depth: \_\_\_\_\_

\_\_\_\_\_ Deepening    \_\_\_\_\_ Re-perf.    \_\_\_\_\_ Conv. to Enhr./SWD

\_\_\_\_\_ Plug Back    \_\_\_\_\_ Plug Back Total Depth

\_\_\_\_\_ Commingled    Docket No. \_\_\_\_\_

\_\_\_\_\_ Dual Completion    Docket No. \_\_\_\_\_

\_\_\_\_\_ Other (SWD or Enhr.?)    Docket No. \_\_\_\_\_

<u>6/21/2006</u>	<u>7/3/2006</u>	<u>8/1/2006</u>
Spud Date or Recompletion Date	Date Reached TD	Completion Date or Recompletion Date

API No. 15 - 007-23026-0000

County: Barber

NE    SE    NE    Sec. 30 Twp. 33 S. R. 10  East  West

3630 S feet from (S) / N (circle one) Line of Section

330 E feet from (E) W (circle one) Line of Section

Footages Calculated from Nearest Outside Section Corner:

(circle one) NE (SE) NW SW

Lease Name: George Well #: V1-30

Field Name: Traffis South Ext.

Producing Formation: Mississippian

Elevation: Ground: 1492 Kelly Bushing: 1502

Total Depth: 4798 Plug Back Total Depth: 4750

Amount of Surface Pipe Set and Cemented at 312 Feet

Multiple Stage Cementing Collar Used?  Yes  No

If yes, show depth set \_\_\_\_\_ Feet

If Alternate II completion, cement circulated from \_\_\_\_\_

feet depth to \_\_\_\_\_ w/ \_\_\_\_\_ sx cmt.

**Drilling Fluid Management Plan**

(Data must be collected from the Reserve Pit)

*ALT II W/HW  
8-20-07*

Chloride content 16,000 ppm Fluid volume 1,800 bbls

Dewatering method used Hauled

Location of fluid disposal if hauled offsite:

Operator Name: Messinger Petroleum, Inc.

Lease Name: Nicholas SWD License No.: 4706

Quarter NE Sec. 20 Twp. 30 S. R. 8  East  West

County: Kingman Docket No.: D27434

**INSTRUCTIONS:** An original and two copies of this form shall be filed with the Kansas Corporation Commission, 130 S. Market - Room 2078, Wichita, Kansas 67202, within 120 days of the spud date, recompletion, workover or conversion of a well. Rule 82-3-130, 82-3-106 and 82-3-107 apply. Information of side two of this form will be held confidential for a period of 12 months if requested in writing and submitted with the form (see rule 82-3-107 for confidentiality in excess of 12 months). One copy of all wireline logs and geologist well report shall be attached with this form. ALL CEMENTING TICKETS MUST BE ATTACHED. Submit CP-4 form with all plugged wells. Submit CP-111 form with all temporarily abandoned wells.

All requirements of the statutes, rules and regulations promulgated to regulate the oil and gas industry have been fully complied with and the statements herein are complete and correct to the best of my knowledge.

Signature: K Todd Allam

Title: President Date: 8/17/06

Subscribed and sworn to before me this 18 day of August

20 00

Notary Public: Brandi Wyer

Date Commission Expires: 2/24/2010

NOTARY PUBLIC - State of Kansas  
**BRANDI WYER**  
My Appt. Expires 2/24/2010

**KCC Office Use ONLY**

Letter of Confidentiality Received  
If Denied, Yes  Date: \_\_\_\_\_

Wireline Log Received

Geologist Report Received

UIC Distribution

**RECEIVED**  
**KANSAS CORPORATION COMMISSION**

**AUG 22 2006**

**CONSERVATION DIVISION**  
**WICHITA, KS**

Operator Name: VAL Energy, Inc. Lease Name: George Well #: V1-30
Sec. 30 Twp. 33 S. R. 10 [ ] East [x] West County: Barber

CONFIDENTIAL

INSTRUCTIONS: Show important tops and base of formations penetrated. Detail all cores. Report all final copies of drill stems tests giving interval tested, time tool open and closed, flowing and shut-in pressures, whether shut-in pressure reached static level, hydrostatic pressures, bottom hole temperature, fluid recovery, and flow rates if gas to surface test, along with final chart(s). Attach extra sheet if more space is needed. Attach copy of all Electric Wireline Logs surveyed. Attach final geological well site report.

Drill Stem Tests Taken [ ] Yes [x] No (Attach Additional Sheets)
Samples Sent to Geological Survey [x] Yes [ ] No
Cores Taken [ ] Yes [x] No
Electric Log Run [x] Yes [ ] No (Submit Copy)
List All E. Logs Run:
Compensated Density/Neutron PE Micro
Dual Induction SP
[ ] Log Formation (Top), Depth and Datum [x] Sample
Name Top Datum
Heebner 3664 -2162
Lansing 4048 -2546
Swope 4354 -2852
Hertha 4380 -2878
Cherokee Shale 4560 -3058
Mississippian Chert 4589 -3087

CASING RECORD [x] New [ ] Used
Report all strings set-conductor, surface, intermediate, production, etc.
Table with columns: Purpose of String, Size Hole Drilled, Size Casing Set (In O.D.), Weight Lbs. / Ft., Setting Depth, Type of Cement, # Sacks Used, Type and Percent Additives.
Rows: Surface (12 1/4, 8 5/8, 23#, 312, 60/40 Poz, 200, 2% Gel, 3%CC); Production (7 7/8, 5 1/2, 14#, 4790', AA2, 175sx, " ")

ADDITIONAL CEMENTING / SQUEEZE RECORD
Table with columns: Purpose (Perforate, Protect Casing, Plug Back TD, Plug Off Zone), Depth Top Bottom, Type of Cement, #Sacks Used, Type and Percent Additives.

PERFORATION RECORD - Bridge Plugs Set/Type
Specify Footage of Each Interval Perforated
Acid, Fracture, Shot, Cement Squeeze Record (Amount and Kind of Material Used)
Depth
2 spf 4634-4660 1000 gal. 15% MA, 8000 bbl SWF w, 90 mlbs sand @ 50 bbl per min. 4634-4660

TUBING RECORD Size 2 7/8 Set At 4700 Packer At Liner Run [ ] Yes [x] No
Date of First, Resumerd Production, SWD or Enhr. 8-18-06 Producing Method [ ] Flowing [x] Pumping [ ] Gas Lift [ ] Other (Explain)
Estimated Production Per 24 Hours Oil Bbls. 30 Gas Mcf 50 Water Bbls. 225 Gas-Oil Ratio Gravity 26

Disposition of Gas METHOD OF COMPLETION Production Interval
[ ] Vented [x] Sold [ ] Used on Lease [ ] Open Hole [x] Perf. [ ] Dually Comp. [ ] Commingled
(If vented, Submit ACO-18.) [ ] Other (Specify)

RECEIVED KANSAS CORPORATION COMMISSION

AUG 22 2006

CONSERVATION DIVISION WICHITA, KS

# ALLIED CEMENTING CO., INC.

24511

KCC  
Federal Tax ID #

AUG 18 2006

REMIT TO P.O. BOX 31  
RUSSELL, KANSAS 67665

SERVICE POINT:

Medicine hodge

**CONFIDENTIAL**

DATE <u>6-21-06</u>	SEC <u>30</u>	TWR <u>335</u>	RANGE <u>10W</u>	CALLED OUT <u>6:00 PM</u>	ON LOCATION <u>6:30 PM</u>	JOB START <u>9:30 PM</u>	JOB FINISH <u>9:45 PM</u>
LEASE <u>George</u>	WELL # <u>1-30</u>	LOCATION <u>Sharon, KS. south on Barber</u>				COUNTY <u>Barber</u>	STATE <u>KS.</u>
OLD OR <u>NEW</u> (Circle one)		LOCATION <u>Tricity Rd. to Kochia Rd, 2w 34N.</u>					

CONTRACTOR Val #3

TYPE OF JOB surface

HOLE SIZE 12 1/4 T.D. 312'

CASING SIZE 8 5/8 x 23' DEPTH 312'

TUBING SIZE \_\_\_\_\_ DEPTH \_\_\_\_\_

DRILL PIPE \_\_\_\_\_ DEPTH \_\_\_\_\_

TOOL \_\_\_\_\_ DEPTH \_\_\_\_\_

PRES. MAX 250 MINIMUM \_\_\_\_\_

MEAS. LINE \_\_\_\_\_ SHOE JOINT \_\_\_\_\_

CEMENT LEFT IN CSG. 15'

PERFS. \_\_\_\_\_

DISPLACEMENT 19 Bbls Freshwater

EQUIPMENT \_\_\_\_\_

414  
PUMP TRUCK CEMENTER Carl Balding  
# 302 HELPER Dennis Cushman

BULK TRUCK  
# 368 DRIVER Greg Grieve

BULK TRUCK  
# \_\_\_\_\_ DRIVER \_\_\_\_\_

OWNER Val Energy

CEMENT AMOUNT ORDERED 200 SX 60:40:2+3:CC

COMMON	<u>120</u>	<u>A</u>	@	<u>10.65</u>	<u>1278.00</u>
POZMIX	<u>80</u>		@	<u>5.80</u>	<u>464.00</u>
GEL	<u>3</u>		@	<u>16.65</u>	<u>49.95</u>
CHLORIDE	<u>6</u>		@	<u>46.60</u>	<u>279.60</u>
ASC			@		
<b>RECEIVED</b>					
KANSAS CORPORATION COMMISSION					
<b>AUG 22 2006</b>					
CONSERVATION DIVISION					
WICHITA, KS					
HANDLING	<u>209</u>		@	<u>1.90</u>	<u>397.10</u>
MILEAGE	<u>20 x 209 x .08</u>		@		<u>334.40</u>
					<b>TOTAL</b> <u>2803.05</u>

REMARKS:

Run 312' 8 5/8 Csg  
Break circulation  
Mix 200 SX 60:40:2+3:CC  
Release plug  
Displace with 19 Bbls water  
Leave 15 cement in pipe  
Shut in. Circulate 50SX

CHARGE TO: Val Energy

STREET \_\_\_\_\_

CITY \_\_\_\_\_ STATE \_\_\_\_\_ ZIP \_\_\_\_\_

To Allied Cementing Co., Inc.  
You are hereby requested to rent cementing equipment and furnish cementer and helper to assist owner or contractor to do work as is listed. The above work was done to satisfaction and supervision of owner agent or contractor. I have read & understand the "TERMS AND CONDITIONS" listed on the reverse side.

SIGNATURE Ron Moon

SERVICE

DEPTH OF JOB 312'

PUMP TRUCK CHARGE 0-300' 815.00

EXTRA FOOTAGE 12' @ .65 7.80

MILEAGE 20 @ 5.00 100.00

MANIFOLD \_\_\_\_\_ @ \_\_\_\_\_ \_\_\_\_\_

Head Rental @ 100.00 100.00

TOTAL 1022.80

8 5/8" PLUG & FLOAT EQUIPMENT

1-TWP @ 60.00 60.00

ANY APPLICABLE TAX WILL BE CHARGED UPON INVOICING TOTAL 60.00

TAX \_\_\_\_\_

TOTAL CHARGE \_\_\_\_\_

DISCOUNT \_\_\_\_\_ IF PAID IN 30 DAYS

PRINTED NAME Ron Moon



KCC

AUG 18 2006

CONFIDENTIAL

FIELD ORDER

13639 ✓

Date 7-2-06 Customer ID \_\_\_\_\_

Lease George "V" Well # 1-30 Legal 30-335-10W

County Barber State KS Station Pratt

Depth \_\_\_\_\_ Formation \_\_\_\_\_ Shoe Joint 39.60'

Casing 5 1/2" 14Lb. Casing Depth 4,790' TD Rig 4,797' Job Type Cement-Long String-New

Customer Representative Ren Moon Treater Clarence R. Messick We

AFE Number \_\_\_\_\_ PO Number \_\_\_\_\_

Materials Received by X Ren Moon

Station Code	Product Code	QUANTITY	MATERIALS, EQUIPMENT, and SERVICES USED	UNIT PRICE	AMOUNT
P	D-205	150 sk.	AA-2		
P	D-203	25 sk.	60/40 Poz		
P	C-195	113 Lb.	FLA-322		
P	C-221	784 Lb.	Salt (Fine)		
P	C-243	36 Lb.	Defoamer		
P	C-244	43 Lb.	Cement Friction Reducer		
P	C-312	141 Lb.	Gas Blok		
P	C-321	748 Lb.	Gilsonite		
P	C-304	1,000 Gal.	Super Flush II		
P	F-101	4 ea.	Turbolizer, 5 1/2"		
P	F-143	1 ea.	Top Rubber Cement Plug, 5 1/2"		
P	F-191	1 ea.	Guide Shoe-Regular, 5 1/2"		
P	F-231	1 ea.	Flapper Type Insert Float Valve, 5 1/2"		
P	E-100	110 mi.	Heavy Vehicle Mileage, 1-Way		
P	E-101	55 mi.	Pickup Mileage, 1-Way		
P	E-104	448 tm.	Bulk Delivery		
P	E-107	175 sk.	Cement Service Charge		
P	R-210	1 ea.	Cement Pumper, 4,501'-5,000'		
P	R-701	1 ea.	Cement Head Rental		
			Discounted Price =		\$9,291.14
			Plus taxes		

RECEIVED  
KANSAS CORPORATION COMMISSION  
AUG 22 2006  
CONSERVATION DIVISION  
WICHITA, KS

Customer <b>Val Energy, Incorporated</b>	Lease No. <b>George "V"</b>	Well # <b>1-30</b>	Date <b>7-2-06</b>
Field Order # <b>13,639</b>	Station <b>Pratt</b>	Casing I.D. <b>5 1/2 14Lb.</b>	Depth <b>4790'</b>
Type Job <b>Cement-Long String-New Well</b>	Formation	County <b>Barber</b>	State <b>K.S.</b>
Legal Description <b>30-335-10W</b>			

**CONFIDENTIAL**

PIPE DATA		PERFORATING DATA		FLUID USED		TREATMENT RESUME			
Casing Size <b>5 1/2 14Lb.</b>	Tubing Size	Shots/Ft		<b>Cement</b>	RATE	PRESS	ISIP		
Depth <b>4790'</b>	Depth	From	To	<b>150 sacks AA-2 with</b>	<b>Max</b>	<b>38</b>	<b>Friction Reducer, .25</b>		
Volume <b>16.88 Bbl.</b>	Volume	From	To	<b>Defoamer</b>	<b>Min</b>	<b>8%</b>	<b>FLA-322,</b>	<b>10% Salt, 1% Gas</b>	
Max Press <b>1500 P.S.I.</b>	Max Press	From	To	<b>Blok, 5 Lb./sk.</b>	<b>Avg</b>	<b>6.28</b>	<b>Gal./sk.,</b>	<b>1.45 CU.F.T./sk.</b>	
Well Connection <b>Plug Cont.</b>	Annulus Vol.	From	To	<b>15 Lb./Gal.,</b>	<b>HHP Used</b>				
Plug Depth <b>4750.4'</b>	Packer Depth	From	To	<b>25 sacks 60/40 Poz to plug rat and mouse holes</b>	<b>Gas Volume</b>				
				<b>Flush 116 Bbl. Fresh H<sub>2</sub>O</b>					

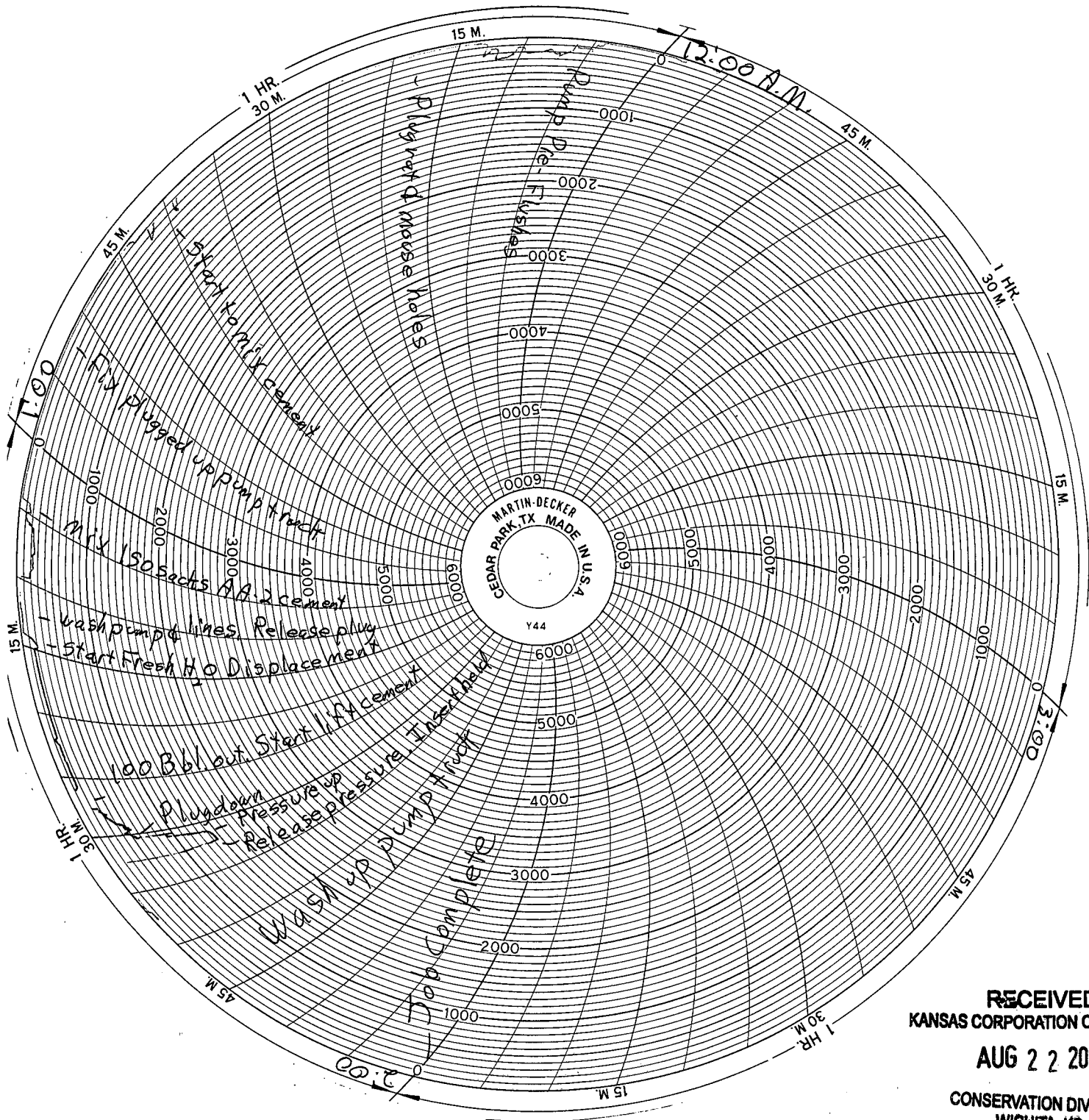
Customer Representative <b>Ron Moon</b>	Station Manager <b>David Scott</b>	Treater <b>Clarence R. Messick</b>
Service Units <b>119</b>	<b>226</b>	<b>347</b>
Driver Names <b>Messick</b>	<b>Andrews</b>	<b>Vonfett</b>

Time	P.M.	Casing Pressure	Tubing Pressure	Bbls. Pumped	Rate	Service Log
6:30						Truck on location and hold safety meeting
7:30						Val Drilling start to run Regular Guide Shoe, Shoe joint with Auto-Fill Baffle screwed into collar and a total of 12 lts. 14 Lb./FT. 5 1/2" casing. Run turbolizers on Collars #2, 3, 4, 5.
11:00						Casing in well. Circulate and Reciprocate for 60 m
12:05		200			6	Start Fresh H <sub>2</sub> O Pre-Flush
				20	6	Start Super Flush II
				44	6	Start Fresh H <sub>2</sub> O Spacer
				47		Stop pumping. Shut in well.
12:20				4-3	2	Plug rat & mouse holes. Open well
12:40		200			5	Start mixing 150 sacks AA-2 cement
				39		Stop pumping. Wash pump and lines. Release plug. Open well.
1:15		- 0 -			6.5	Start Fresh H <sub>2</sub> O Displacement
1:30		500		116		Plug down
		1,500				Pressure up
						Release pressure. Insert held
						Wash up pump truck
2:00						Job Complete

RECEIVED  
KANSAS CORPORATION COMMISSION  
AUG 22 2006  
CONSERVATION DIVISION  
WICHITA, KS

Thanks. Clarence R. Messick and crew

**KCC**  
AUG 18 2006  
**CONFIDENTIAL**



**RECEIVED**  
KANSAS CORPORATION COMMISSION  
AUG 22 2006  
CONSERVATION DIVISION  
WICHITA, KS