

CORRECTION

C-1

NOTICE OF INTENTION TO DRILL

TYPE

TO BE FILED WITH THE STATE CORPORATION COMMISSION
PRIOR TO COMMENCEMENT OF WELL

API Number 15-163-20,724-00-00
(For office use only)

1. Operator Two Way Oil Co.

Starting Date 8-15-77

Address 1000 SW Second - Plainville, KS 67663

County Rooks

2. Contractor Dreiling Oil, Inc.

Sec 35 Twp 8 S Rge 18 W

Address R.R. #1 - Victoria, KS 67671

* Spot Location ~~1000 SW 2nd~~ S 1/2 N 1/2 NE 1/4

3. Type of Equipment: Rotary X Cable Tool _____

Nearest Lease Line 990' ft.

4. Well to be Drilled for: Oil X Gas _____

Lease Name Dechant

Disposal _____ Input _____ Other _____

5. Depth of Deepest Fresh Water within 1 mile 50' ft.

Well No. #5

6. Depth of Municipal Water Well within 3 miles none ft.

7. Depth to Protect all Fresh Water 100' ft.

Est. Total Depth 3500' ft.

8. Amount of Surface Casing to be set 150+ ft.

9. Alternate No. 1 _____ No. 2 X

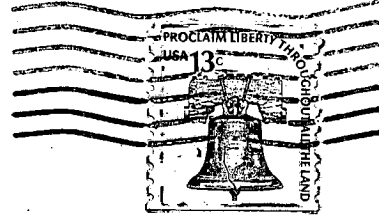
REMARKS:

OPERATOR STATES THAT HE WILL COMPLY WITH K. S. A. 55-128

* WAS - SE 1/4

Signature of Operator Gene Brown





State Corporation Commission of Kansas
Conservation Division
245 North Water
Wichita, Kansas 67202

RECEIVED
STATE CORPORATION COMMISSION

AUG 05 1977
AUG 05 1977
CONSERVATION DIVISION
Wichita, Kansas

(IF PREFERRED, MAIL IN ENVELOPE)