

TYPE

NOTICE OF INTENTION TO DRILL

C-1

TO BE FILED WITH THE STATE CORPORATION COMMISSION
PRIOR TO COMMENCEMENT OF WELL

API Number 15-003-20,410 -
(For office use only) 00-00

1. Operator Richard Engineering & H & B 74, Ltd.

Starting Date July 6, 1975

Address 1315 S. Steuben, Chanute, Ks. 66720

County Anderson

2. Contractor Carter Land & Cattle Co., Inc.

Sec 4 Twp 23 S Rge 21E W
(580)

Address Same

Spot Location 580 FNL of SW/4, 600 FWL

3. Type of Equipment: Rotary Cable Tool _____

Nearest Lease Line 580' ft.

4. Well to be Drilled for: Oil Gas _____

Lease Name Gaddis

Disposal _____ Input _____ Other _____

5. Depth of Deepest Fresh Water within 1 mile none ft.

Well No. 22

6. Depth of Municipal Water Well within 3 miles none ft.

7. Depth to Protect all Fresh Water 20' ft.

8. Amount of Surface Casing to be set 22' ft.

Est. Total Depth 800' ft.

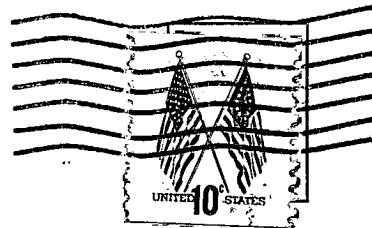
9. Alternate No. 1 _____ No. 2

REMARKS:

OPERATOR STATES THAT HE WILL COMPLY WITH K. S. A. 56-128

Signature of Operator John R. Reeves





**State Corporation Commission of Kansas
Conservation Division
P. O. Box 17027
Wichita, Kansas 67217**

RECEIVED
STATE CORPORATION COMMISSION
06-30-75
JUN 30 1975

**CONSERVATION DIVISION
Wichita, Kansas**

(IF PREFERRED, MAIL IN ENVELOPE)