

TYPE

# NOTICE OF INTENTION TO DRILL

C-1

TO BE FILED WITH THE STATE CORPORATION COMMISSION  
PRIOR TO COMMENCEMENT OF WELL

API Number 15-003-20,409-  
(For office use only) 00-00

1. Operator Richard Engineering Co. & H & B 74, Ltd.

Starting Date July 6, 1975

Address 1315 S. Steuben Chanute, Ks. 66720

County Anderson

2. Contractor Carter Land & Cattle Co., Inc.

Sec 4 Twp 23 S Rge 21E W

Address Same

Spot Location 230' FNL of SW/4, 520' FWL

3. Type of Equipment: Rotary X Cable Tool \_\_\_\_\_

Nearest Lease Line 230' ft.

4. Well to be Drilled for: Oil X Gas \_\_\_\_\_

Lease Name Gaddis

Disposal \_\_\_\_\_ Input \_\_\_\_\_ Other \_\_\_\_\_

5. Depth of Deepest Fresh Water within 1 mile none ft.

6. Depth of Municipal Water Well within 3 miles none ft.

Well No. 21

7. Depth to Protect all Fresh Water 20' ft.

8. Amount of Surface Casing to be set 22' ft.

Est. Total Depth 800' ft.

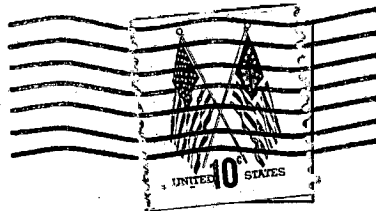
9. Alternate No. 1 \_\_\_\_\_ No. 2 X

REMARKS:

OPERATOR STATES THAT HE WILL COMPLY WITH K. S. A. 55-128

Signature of Operator John R. Reed





**State Corporation Commission of Kansas  
Conservation Division  
P. O. Box 17027  
Wichita, Kansas 67217**

**RECEIVED**  
STATE CORPORATION COMMISSION  
06-30-75  
JUN 30 1975  
CONSERVATION DIVISION  
Wichita, Kansas

**(IF PREFERRED, MAIL IN ENVELOPE)**