

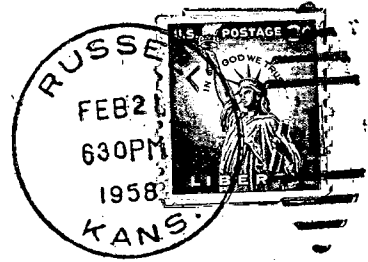
TO BE FILED WITH THE STATE CORPORATION COMMISSION PRIOR TO COMMENCEMENT OF WELL

1. Operator JOHN O. FARMER, INC. Address Russell, Kansas
2. Lease name ELLSWORTH "B" Well No. 1 County Graham
3. Well Location NW NW SE Sec. 8 Township 8S Range 23 W
4. Well to be drilled 330 ft. from nearest lease line.
5. Drilling Contractor JOHN O. FARMER, INC. Address Russell, Kansas
6. Type of equipment: Rotary Cable Tool Approx. date operation to begin 2/21 1958
7. Well to be drilled for Oil Gas Disposal Input Estimated Total Depth of Well 3800 ft.
8. Depth of deepest fresh water well within one mile of location 60-70 ft. If none exist, write NONE.
9. Ground elevation at location is approx. _____ ft. higher or 10-15 ft. lower than ground elevation at water well.
10. Depth of the deepest municipal water well within three miles of location 60-70 ft. If none exist, write NONE.
11. Operator states that he will set surface pipe at least 25 ft. below all Tertiary or unconsolidated deposits and, taking into consideration differences in ground elevations, that the minimum depth necessary, to the best of his knowledge and belief, to protect all fresh water zones is 60-70 ft. and operator agrees to set surface pipe at this location to a depth of not less than 160 ft. Alternate 1 Alternate 2 .

REMARKS:

Signature of Operator

John O. Farmer
JK



State Corporation Commission of Kansas
Conservation Division
500 Insurance Building
212 North Market
Wichita 2, Kansas

RECEIVED
STATE CORPORATION COMMISSION
2-24-1958
FEB 24 1958

CONSERVATION DIVISION
Wichita, Kansas

-(IF PREFERRED, MAIL IN ENVELOPE)